

YEAR

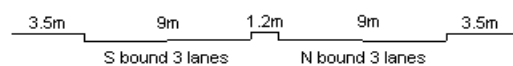
2009

LINK

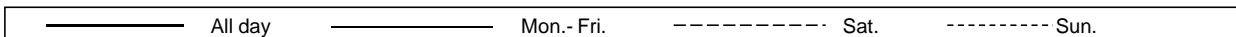
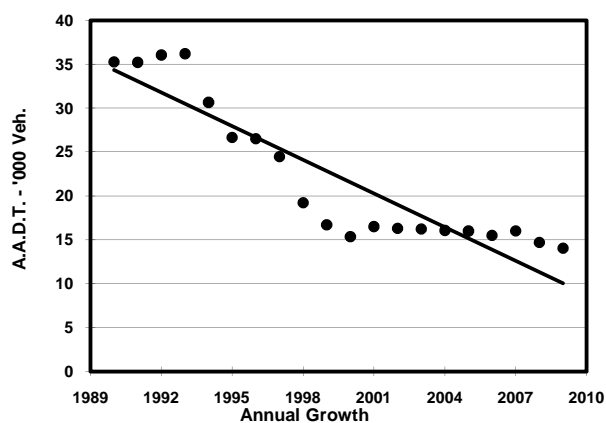
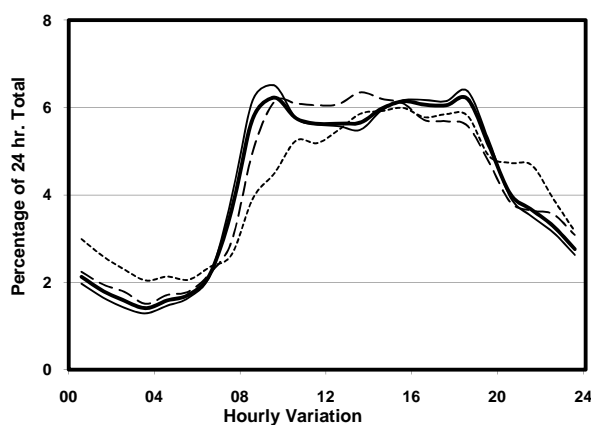
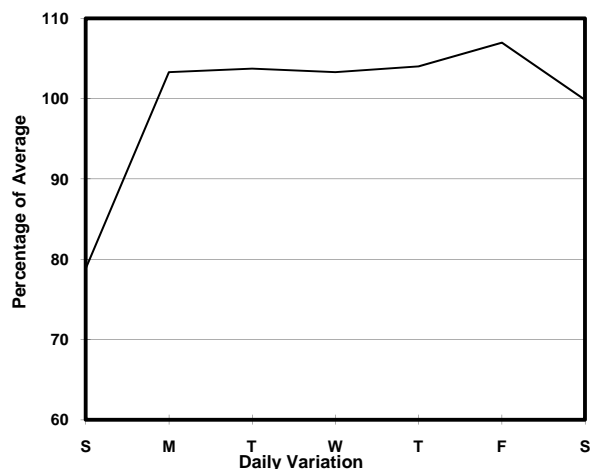
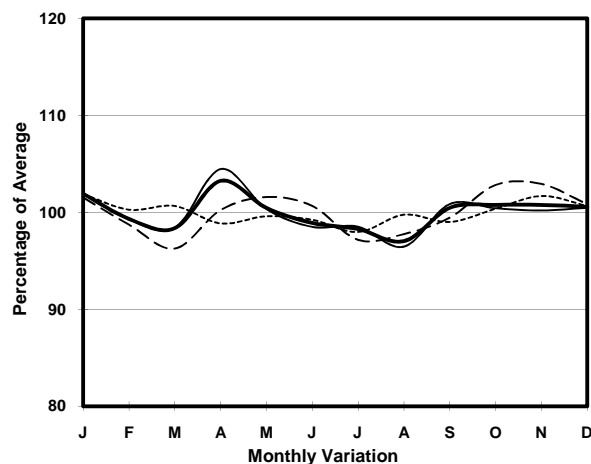
LAI CHI KOK RD (from TONKIN ST to HING WAH ST)

CORE STATION
ROAD NETWORK
ROAD TYPE

3008
MAJOR
PRIMARY DISTRIBUTOR



1. TRAFFIC FLOW VARIATION AND GROWTH



2. TRAFFIC CHARACTERISTICS (BY DIRECTION)

Parameter	All - Day	Mon. - Fri.	Sat.	Sun.
SOUTH BOUND				
A.A.D.T.	5910	6120	6100	5130
R 12 / 24 - %	67.8	68.7	67.7	63.1
R 16 / 24 - %	83.8	84.4	83.2	80.7
AM Peak Hour	0900-1000	0900-1000	0900-1000	0900-1000
One-way flow at AM peak hour	340	360	360	220
T - % (AM)	-	-	-	-
PM Peak Hour	1800-1900	1800-1900	1800-1900	1700-1800
One-way flow at PM peak hour	370	390	360	320
T - % (PM)	-	-	-	-
Prop.of commercial vehicles - 16 hr.	-	-	-	-
NORTH BOUND				
A.A.D.T.	8140	8700	8090	6080
R 12 / 24 - %	69.4	70.8	68.2	61.3
R 16 / 24 - %	85.6	86.7	84.1	80.1
AM Peak Hour	0900-1000	0900-1000	0900-1000	0900-1000
One-way flow at AM peak hour	540	600	520	280
T - % (AM)	-	-	-	-
PM Peak Hour	1800-1900	1800-1900	1600-1700	1800-1900
One-way flow at PM peak hour	500	550	460	340
T - % (PM)	-	-	-	-
Prop.of commercial vehicles - 16 hr.	-	-	-	-

3. OTHER INFORMATION AND COMMENT