

YEAR

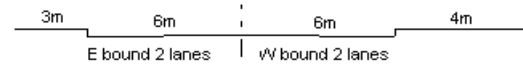
2009

LINK

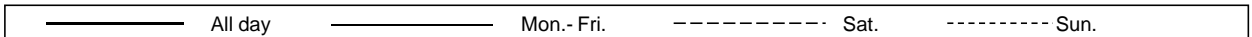
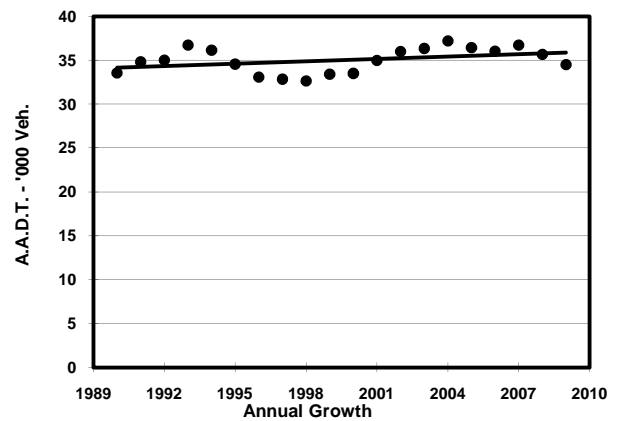
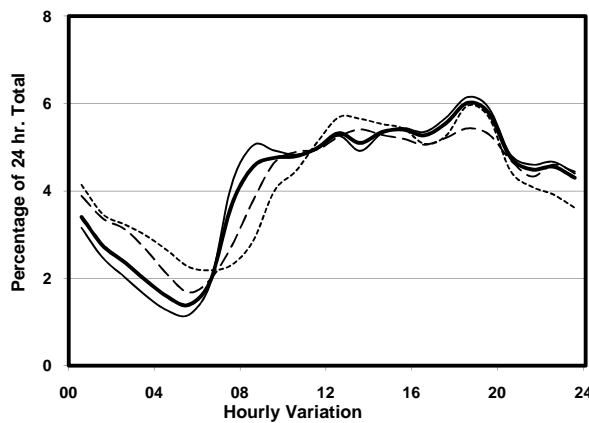
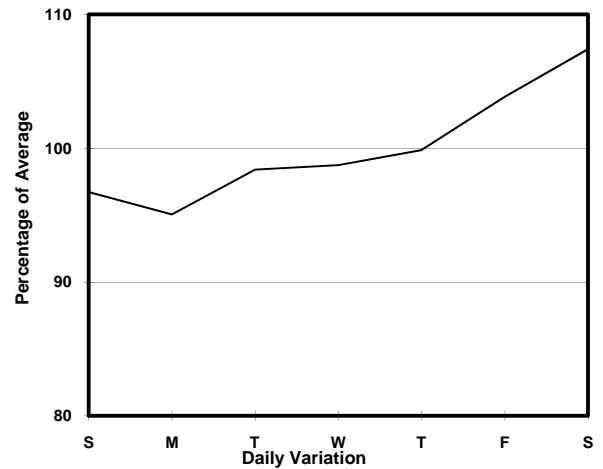
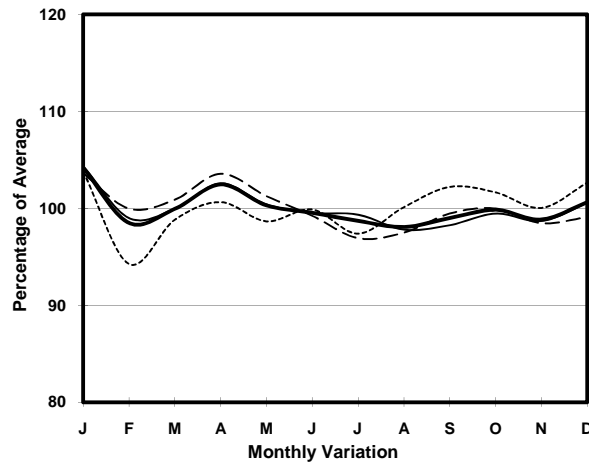
AUSTIN RD (from COX'S RD to CHATHAM RD S)

CORE STATION
ROAD NETWORK
ROAD TYPE

3013
MAJOR
DISTRICT DISTRIBUTOR



1. TRAFFIC FLOW VARIATION AND GROWTH



2. TRAFFIC CHARACTERISTICS (BY DIRECTION)

Parameter	All - Day	Mon. - Fri.	Sat.	Sun.
EAST BOUND				
A.A.D.T.	13080	13170	13780	12160
R 12 / 24 - %	64.1	65.6	61.5	58.6
R 16 / 24 - %	83.4	84.8	80.5	79.3
AM Peak Hour	0800-0900	0800-0900	0900-1000	0900-1000
One-way flow at AM peak hour	710	800	730	480
T - % (AM)	-	-	-	-
PM Peak Hour	1800-1900	1800-1900	1800-1900	1800-1900
One-way flow at PM peak hour	810	820	790	770
T - % (PM)	-	-	-	-
Prop.of commercial vehicles - 16 hr.	-	-	-	-
WEST BOUND				
A.A.D.T.	21420	21110	23320	21390
R 12 / 24 - %	58.7	59.8	55.7	56.6
R 16 / 24 - %	78.5	80.3	74.6	73.4
AM Peak Hour	0900-1000	0900-1000	0900-1000	0900-1000
One-way flow at AM peak hour	950	960	990	860
T - % (AM)	-	-	-	-
PM Peak Hour	1800-1900	1800-1900	1800-1900	1800-1900
One-way flow at PM peak hour	1270	1290	1220	1220
T - % (PM)	-	-	-	-
Prop.of commercial vehicles - 16 hr.	-	-	-	-

3. OTHER INFORMATION AND COMMENT