

YEAR

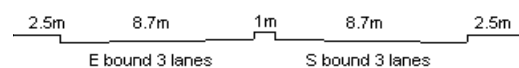
2009

LINK

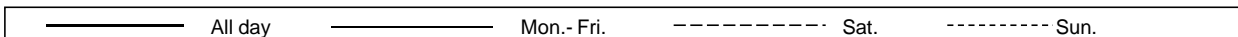
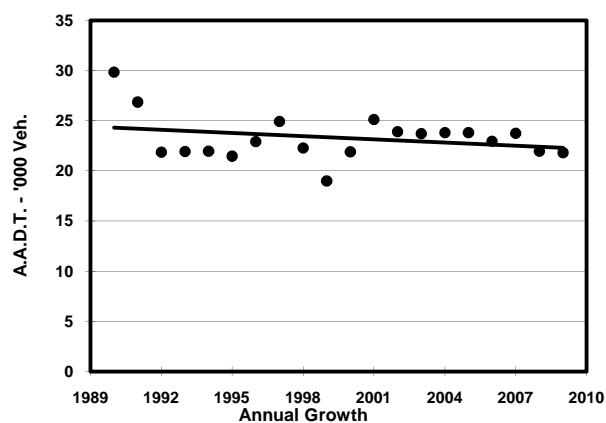
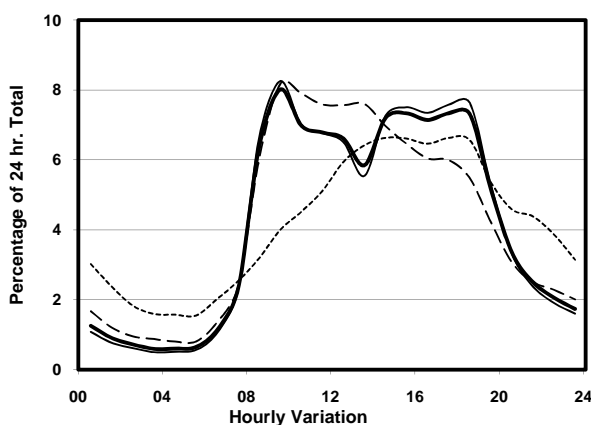
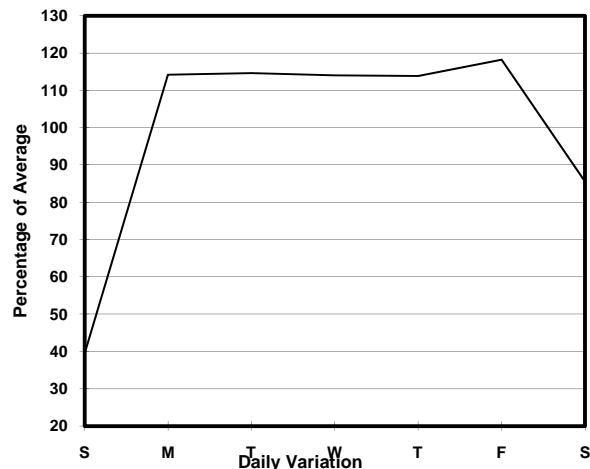
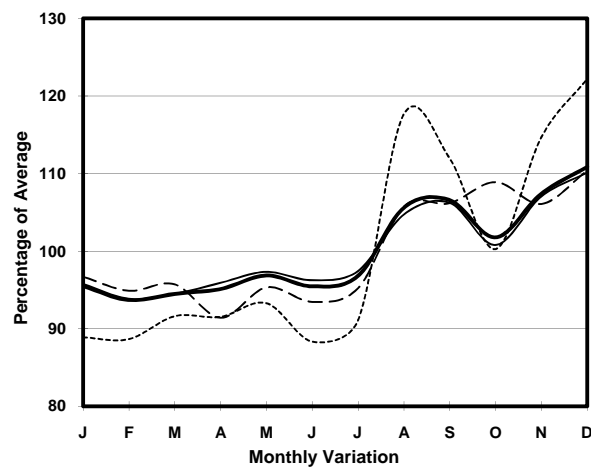
WAI YIP ST (from LAI YIP ST to HOI YUEN RD)

CORE STATION
ROAD NETWORK
ROAD TYPE

3020
MAJOR
DISTRICT DISTRIBUTOR



1. TRAFFIC FLOW VARIATION AND GROWTH



2. TRAFFIC CHARACTERISTICS (BY DIRECTION)

| Parameter | All - Day | Mon. - Fri. | Sat. | Sun. |
|--------------------------------------|-----------|-------------|-----------|-----------|
| EAST BOUND | | | | |
| A.A.D.T. | 14600 | 17280 | 12980 | 6080 |
| R 12 / 24 - % | 80.8 | 82.1 | 79.3 | 66.7 |
| R 16 / 24 - % | 93.2 | 94 | 91.5 | 85.1 |
| AM Peak Hour | 0900-1000 | 0900-1000 | 0900-1000 | 0900-1000 |
| One-way flow at AM peak hour | 1310 | 1600 | 1160 | 270 |
| T - % (AM) | - | - | - | - |
| PM Peak Hour | 1700-1800 | 1700-1800 | 1600-1700 | 1800-1900 |
| One-way flow at PM peak hour | 1050 | 1280 | 780 | 410 |
| T - % (PM) | - | - | - | - |
| Prop.of commercial vehicles - 16 hr. | - | - | - | - |
| WEST BOUND | | | | |
| A.A.D.T. | 7210 | 8600 | 6300 | 2750 |
| R 12 / 24 - % | 76.1 | 77.1 | 76 | 60.3 |
| R 16 / 24 - % | 90.7 | 91.9 | 87.9 | 78.1 |
| AM Peak Hour | 0900-1000 | 0900-1000 | 0900-1000 | 0900-1000 |
| One-way flow at AM peak hour | 440 | 540 | 410 | 90 |
| T - % (AM) | - | - | - | - |
| PM Peak Hour | 1800-1900 | 1800-1900 | 1600-1700 | 1700-1800 |
| One-way flow at PM peak hour | 600 | 760 | 390 | 190 |
| T - % (PM) | - | - | - | - |
| Prop.of commercial vehicles - 16 hr. | - | - | - | - |

3. OTHER INFORMATION AND COMMENT