

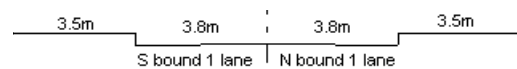
YEAR 2009

CORE STATION 3022

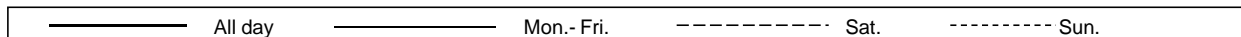
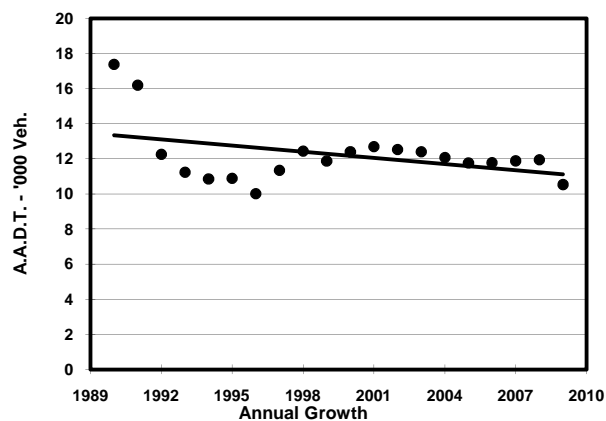
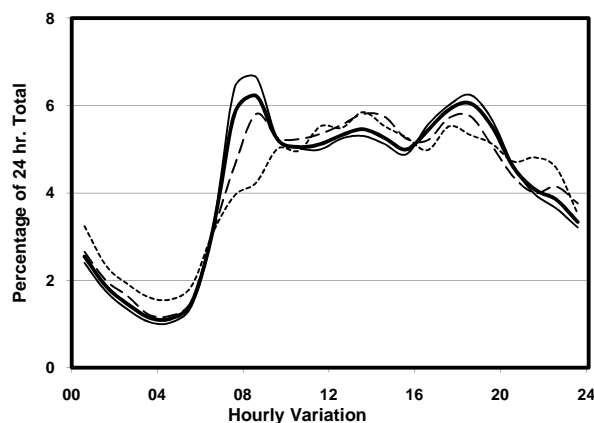
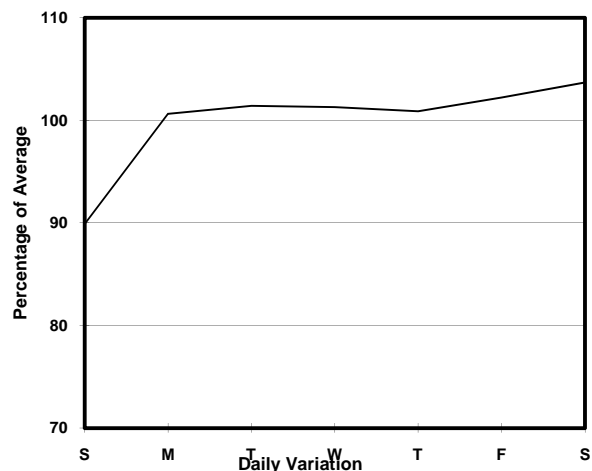
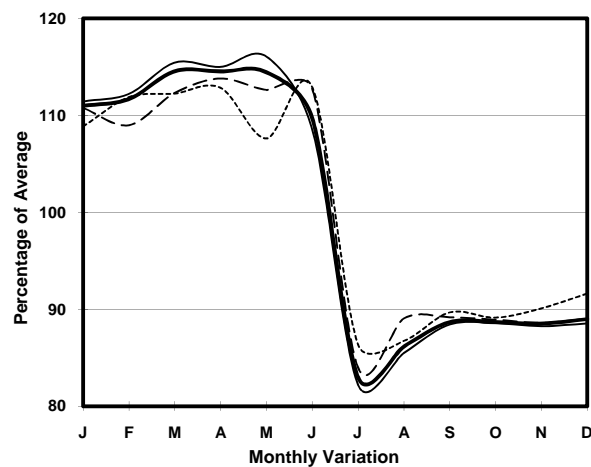
ROAD NETWORK MAJOR

ROAD TYPE LOCAL DISTRIBUTOR

LINK SHEUNG FUNG ST (from SHUNG WAH ST to FUNG TAK RD)



1. TRAFFIC FLOW VARIATION AND GROWTH



2. TRAFFIC CHARACTERISTICS (BY DIRECTION)

Parameter	All - Day	Mon. - Fri.	Sat.	Sun.
SOUTH BOUND				
A.A.D.T.	7600	7640	8070	7160
R 12 / 24 - %	65	65.8	64.6	61.1
R 16 / 24 - %	83.2	83.9	82.3	80.3
AM Peak Hour	0800-0900	0800-0900	0800-0900	0900-1000
One-way flow at AM peak hour	420	450	430	350
T - % (AM)	-	-	-	-
PM Peak Hour	1700-1800	1700-1800	1700-1800	1700-1800
One-way flow at PM peak hour	470	480	470	410
T - % (PM)	-	-	-	-
Prop.of commercial vehicles - 16 hr.	-	-	-	-
NORTH BOUND				
A.A.D.T.	2930	3060	2900	2440
R 12 / 24 - %	70	71	69.4	64.8
R 16 / 24 - %	87.3	88	86	84.1
AM Peak Hour	0700-0800	0700-0800	0800-0900	0900-1000
One-way flow at AM peak hour	240	280	210	130
T - % (AM)	-	-	-	-
PM Peak Hour	1800-1900	1800-1900	1800-1900	1800-1900
One-way flow at PM peak hour	190	210	180	140
T - % (PM)	-	-	-	-
Prop.of commercial vehicles - 16 hr.	-	-	-	-

3. OTHER INFORMATION AND COMMENT

Temporary traffic diversion schemes were implemented in the vicinity.