

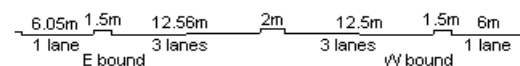
YEAR 2009

CORE STATION 3023

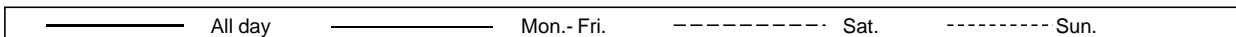
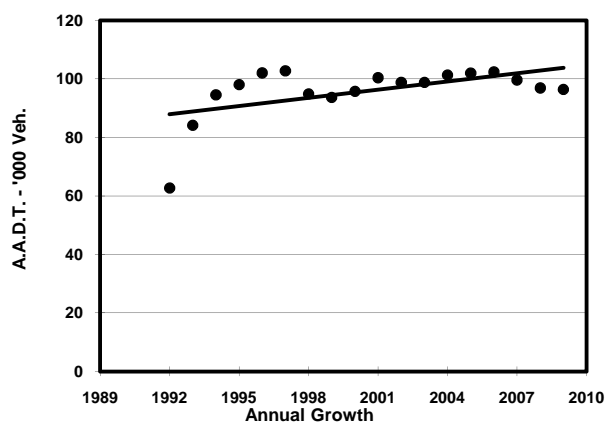
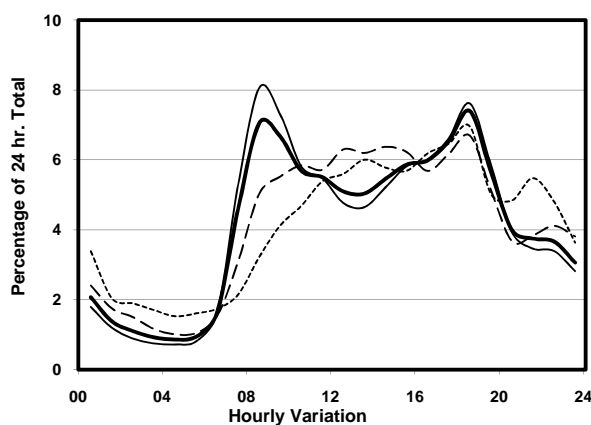
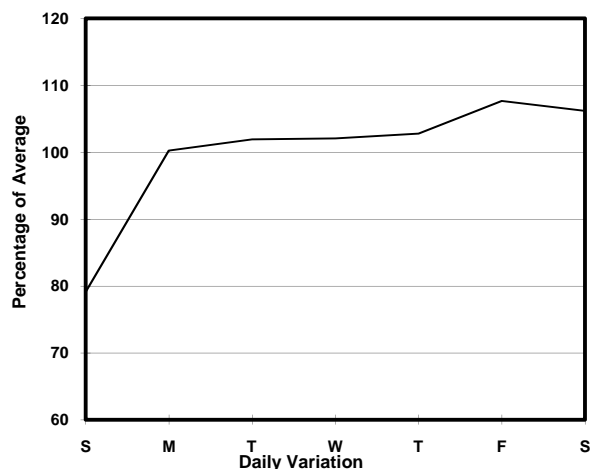
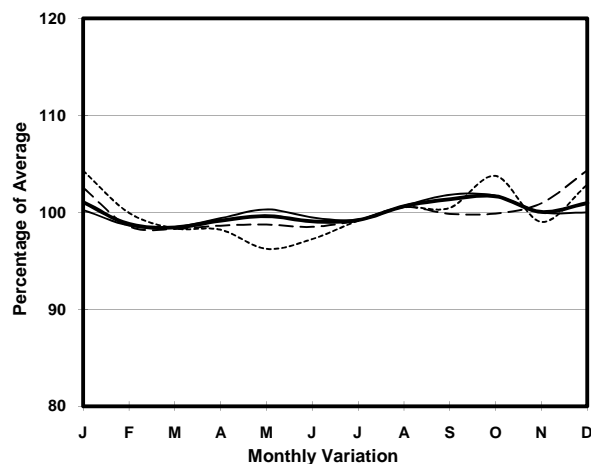
ROAD NETWORK MAJOR

ROAD TYPE EXPRESSWAY

LINK KWUN TONG BYPASS <K77> (from WAI YIP ST to CHEUNG YIP ST)



## 1. TRAFFIC FLOW VARIATION AND GROWTH



## 2. TRAFFIC CHARACTERISTICS (BY DIRECTION)

Parameter	All - Day	Mon. - Fri.	Sat.	Sun.
<b>EAST BOUND</b>				
A.A.D.T.	46420	48630	49450	36120
R 12 / 24 - %	69.8	71.6	67.9	60.2
R 16 / 24 - %	87.9	89.2	85.6	82.2
AM Peak Hour	0900-1000	0900-1000	0900-1000	0900-1000
One-way flow at AM peak hour	3260	3730	2970	1450
T - % (AM)	-	-	-	-
PM Peak Hour	1800-1900	1800-1900	1800-1900	1800-1900
One-way flow at PM peak hour	3350	3600	3200	2510
T - % (PM)	-	-	-	-
Prop.of commercial vehicles - 16 hr.	-	-	-	-
<b>WEST BOUND</b>				
A.A.D.T.	49980	51730	54140	41100
R 12 / 24 - %	72	73.7	69.9	64.1
R 16 / 24 - %	88.1	89.5	85.8	82.6
AM Peak Hour	0800-0900	0800-0900	0900-1000	0900-1000
One-way flow at AM peak hour	3690	4400	2760	1740
T - % (AM)	-	-	-	-
PM Peak Hour	1800-1900	1800-1900	1800-1900	1800-1900
One-way flow at PM peak hour	3790	4050	3750	2870
T - % (PM)	-	-	-	-
Prop.of commercial vehicles - 16 hr.	-	-	-	-

## 3. OTHER INFORMATION AND COMMENT