

YEAR

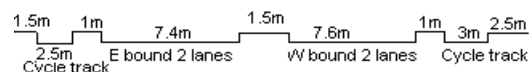
2009

LINK

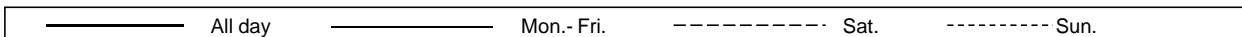
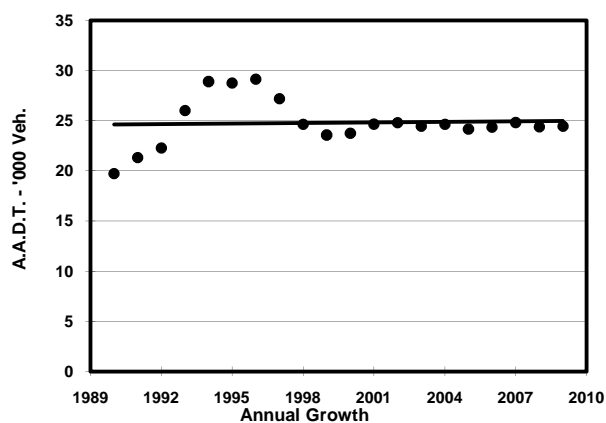
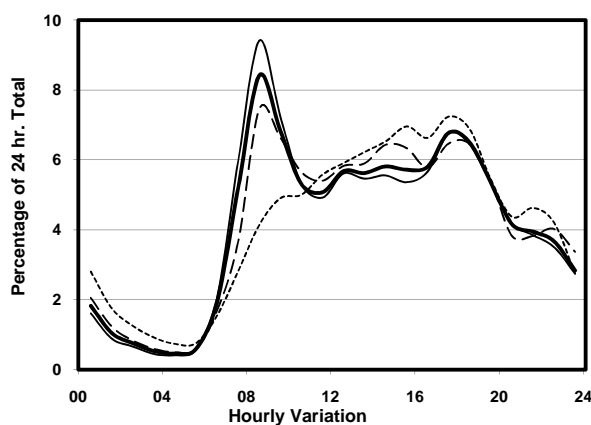
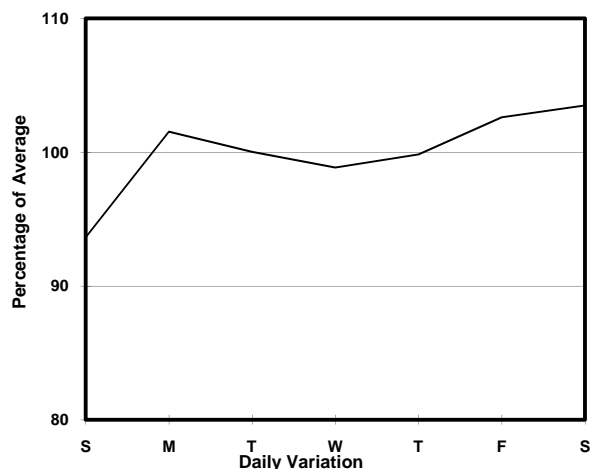
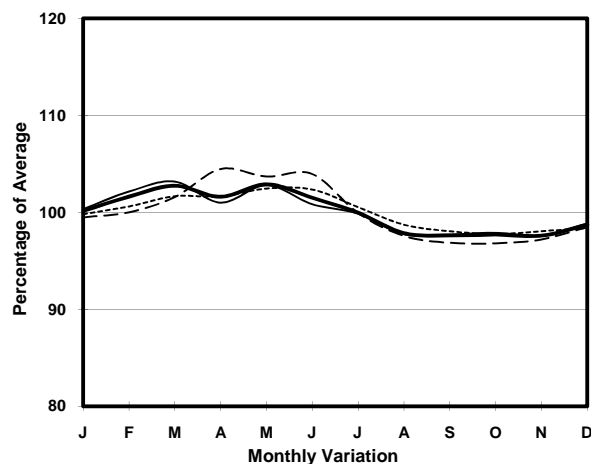
TING KOK RD (from NAM WAN RD to DAI KWAI ST)

CORE STATION
ROAD NETWORK
ROAD TYPE

5006
MAJOR
PRIMARY DISTRIBUTOR



1. TRAFFIC FLOW VARIATION AND GROWTH



2. TRAFFIC CHARACTERISTICS (BY DIRECTION)

Parameter	All - Day	Mon. - Fri.	Sat.	Sun.
EAST BOUND				
A.A.D.T.	11700	11760	12180	11240
R 12 / 24 - %	68.3	68.6	68.6	66
R 16 / 24 - %	89.2	89.9	88.2	86.3
AM Peak Hour	0800-0900	0800-0900	0800-0900	0900-1000
One-way flow at AM peak hour	890	1020	740	510
T - % (AM)	-	-	-	-
PM Peak Hour	1800-1900	1800-1900	1700-1800	1600-1700
One-way flow at PM peak hour	770	810	790	760
T - % (PM)	-	-	-	-
Prop.of commercial vehicles - 16 hr.	-	-	-	-
WEST BOUND				
A.A.D.T.	12750	12920	13170	11760
R 12 / 24 - %	77	78.4	75.2	71.5
R 16 / 24 - %	90.7	91.2	89.9	88.6
AM Peak Hour	0800-0900	0800-0900	0800-0900	0900-1000
One-way flow at AM peak hour	1170	1310	1150	620
T - % (AM)	-	-	-	-
PM Peak Hour	1700-1800	1700-1800	1800-1900	1700-1800
One-way flow at PM peak hour	920	920	890	990
T - % (PM)	-	-	-	-
Prop.of commercial vehicles - 16 hr.	-	-	-	-

3. OTHER INFORMATION AND COMMENT