

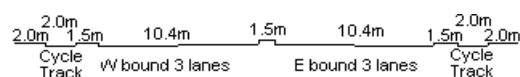
YEAR 2009

CORE STATION 5019

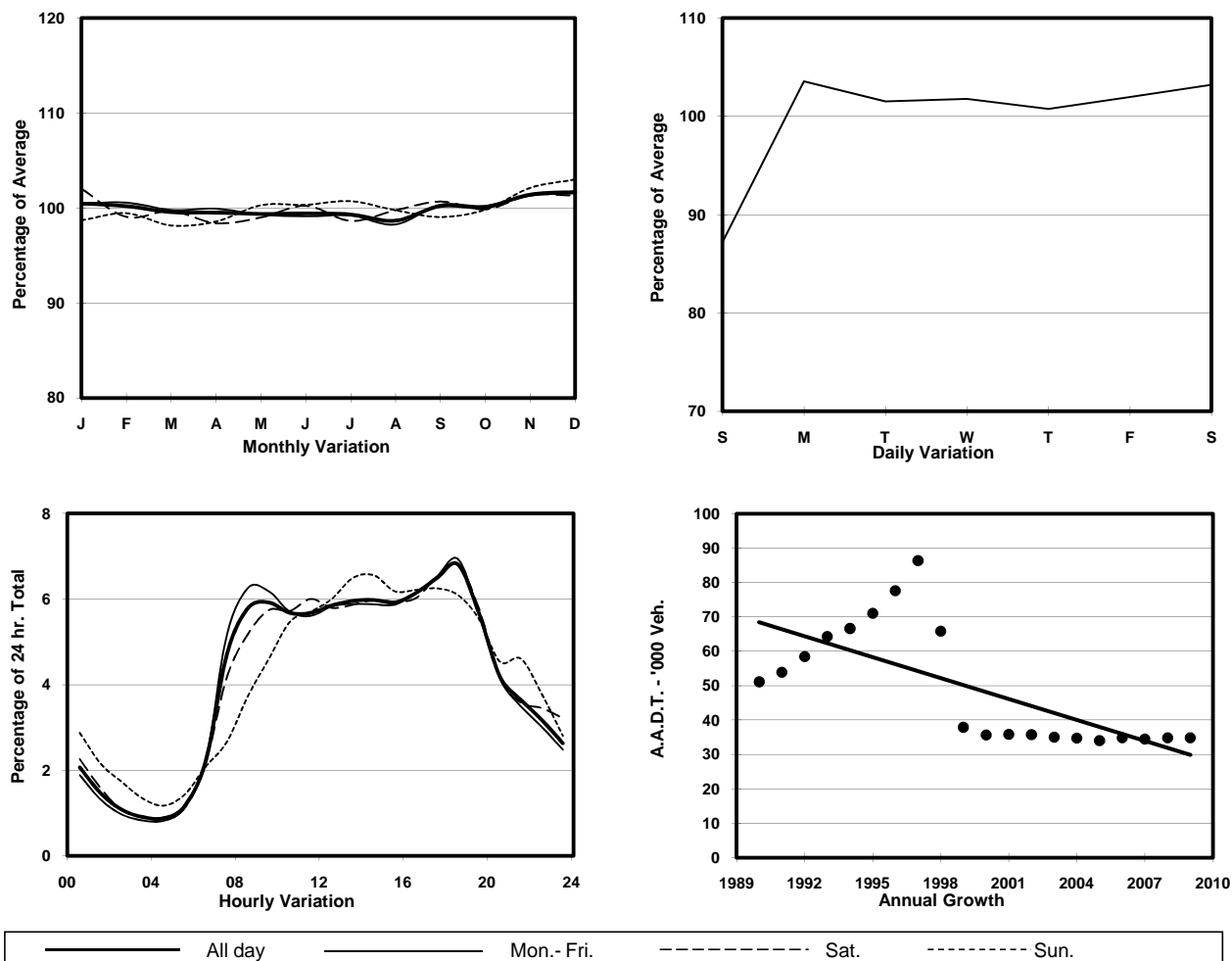
ROAD NETWORK MAJOR

ROAD TYPE RURAL TRUNK ROAD

LINK CASTLE PEAK RD - YUEN LONG (from YUEN LONG ON LOK RD to KAM TIN RD)



## 1. TRAFFIC FLOW VARIATION AND GROWTH



## 2. TRAFFIC CHARACTERISTICS (BY DIRECTION)

Parameter	All - Day	Mon. - Fri.	Sat.	Sun.
<b>EAST BOUND</b>				
A.A.D.T.	16350	16710	17020	14660
R 12 / 24 - %	70.8	71.9	70.2	65.7
R 16 / 24 - %	87.2	87.8	86.6	84.2
AM Peak Hour	0900-1000	0900-1000	0900-1000	0900-1000
One-way flow at AM peak hour	1010	1100	1020	630
T - % (AM)	-	-	-	-
PM Peak Hour	1700-1800	1700-1800	1700-1800	1700-1800
One-way flow at PM peak hour	1080	1100	1140	970
T - % (PM)	-	-	-	-
Prop.of commercial vehicles - 16 hr.	-	-	-	-
<b>WEST BOUND</b>				
A.A.D.T.	18450	19000	19190	15890
R 12 / 24 - %	71	72.1	69.3	66.2
R 16 / 24 - %	88	88.7	86.8	84.6
AM Peak Hour	0900-1000	0800-0900	0900-1000	0900-1000
One-way flow at AM peak hour	1050	1140	1060	780
T - % (AM)	-	-	-	-
PM Peak Hour	1800-1900	1800-1900	1800-1900	1800-1900
One-way flow at PM peak hour	1410	1500	1430	1000
T - % (PM)	-	-	-	-
Prop.of commercial vehicles - 16 hr.	-	-	-	-

## 3. OTHER INFORMATION AND COMMENT