

YEAR

2009

LINK

MAGAZINE GAP RD (from GARDEN RD to PEAK RD)

COVERAGE (B) STATION

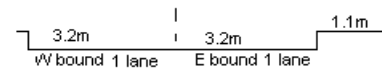
2205

ROAD NETWORK

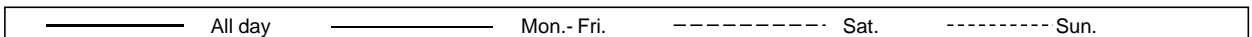
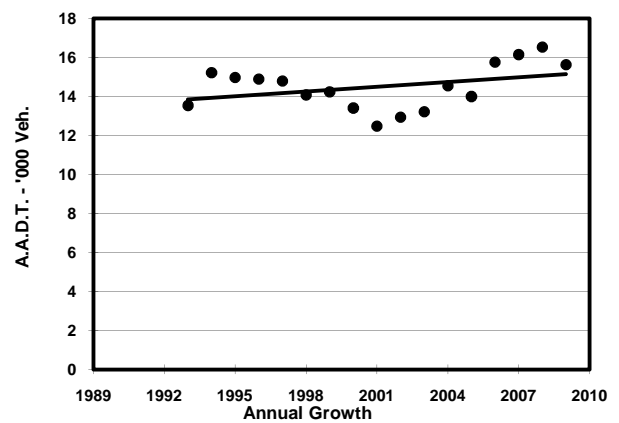
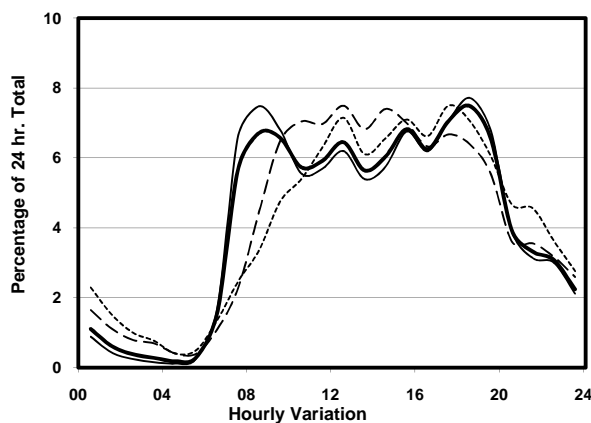
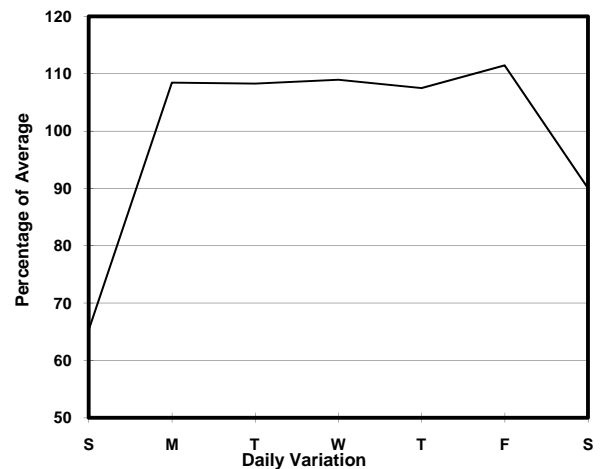
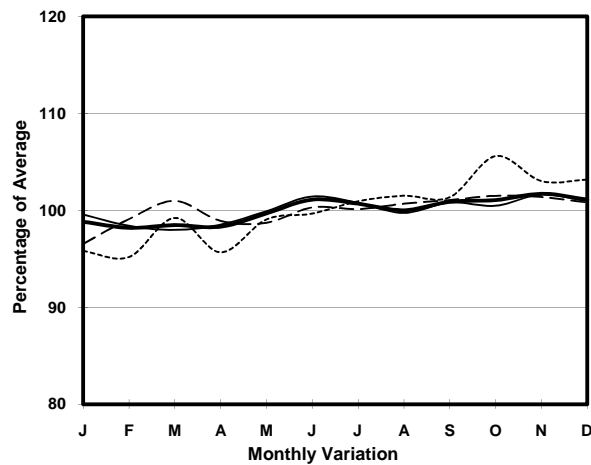
MAJOR

ROAD TYPE

DISTRICT DISTRIBUTOR



1. TRAFFIC FLOW VARIATION AND GROWTH



2. TRAFFIC CHARACTERISTICS (BY DIRECTION)

Parameter	All - Day	Mon. - Fri.	Sat.	Sun.
EAST BOUND				
A.A.D.T.	8070	8910	7430	5560
R 12 / 24 - %	74.3	74.9	74.2	69.7
R 16 / 24 - %	92.6	93.4	90.3	89.2
AM Peak Hour	0800-0900	0800-0900	0900-1000	0900-1000
One-way flow at AM peak hour	500	620	470	250
T - % (AM)	-	3	-	-
PM Peak Hour	1800-1900	1800-1900	1700-1800	1700-1800
One-way flow at PM peak hour	620	720	500	410
T - % (PM)	-	0.7	-	-
Prop.of commercial vehicles - 16 hr.	-	1.4	-	-
WEST BOUND				
A.A.D.T.	7550	8410	6890	4810
R 12 / 24 - %	78.6	79.8	76.6	71.2
R 16 / 24 - %	94	94.9	92.2	89.6
AM Peak Hour	0800-0900	0800-0900	0900-1000	0900-1000
One-way flow at AM peak hour	550	680	460	250
T - % (AM)	-	4.3	-	-
PM Peak Hour	1700-1800	1700-1800	1800-1900	1700-1800
One-way flow at PM peak hour	550	620	480	370
T - % (PM)	-	1.5	-	-
Prop.of commercial vehicles - 16 hr.	-	3.1	-	-

3. OTHER INFORMATION AND COMMENT

4. Vehicle classification and occupancy - Monday to Friday

Time		Class of vehicle									
		Motor	Private	Taxi	Private	PLB	Goods veh.		Non	Fr. Bus	
		Cycle	Car		LB		Light	M & H	Fr. Bus	SD	DD
0700-0800	Pro	1.8	52.0	29.0	0.9	5.4	2.7	0.0	8.1	0.0	0.0
	Ocp	1.0	1.6	1.7	10.0	14.3	1.5	0.0	10.2	0.0	0.0
0800-0900	Pro	2.4	62.9	23.7	0.3	3.6	3.3	0.0	3.6	0.0	0.0
	Ocp	1.1	1.5	1.9	7.0	13.6	1.8	0.0	10.5	0.0	0.0
0900-1000	Pro	1.3	59.4	30.3	1.3	2.5	4.7	0.3	0.3	0.0	0.0
	Ocp	1.3	1.6	1.8	1.5	9.9	1.9	2.0	2.0	0.0	0.0
1000-1100	Pro	0.8	57.9	30.6	0.0	2.0	7.9	0.0	0.8	0.0	0.0
	Ocp	1.0	1.5	1.8	0.0	8.8	1.6	0.0	1.0	0.0	0.0
1100-1200	Pro	0.5	55.0	29.3	1.4	1.4	10.8	0.9	0.9	0.0	0.0
	Ocp	1.0	1.5	1.9	2.0	14.0	1.7	2.0	3.5	0.0	0.0
1200-1300	Pro	1.6	57.8	29.3	1.6	0.8	6.3	0.4	2.3	0.0	0.0
	Ocp	1.0	1.7	2.1	5.8	17.0	1.8	2.0	4.0	0.0	0.0
1300-1400	Pro	3.0	56.3	29.0	0.9	2.6	6.1	0.0	2.2	0.0	0.0
	Ocp	1.1	1.5	2.1	2.0	12.3	1.6	0.0	11.8	0.0	0.0
1400-1500	Pro	1.2	62.0	23.3	1.2	1.6	8.2	0.4	2.0	0.0	0.0
	Ocp	1.0	1.6	2.0	4.0	14.0	1.6	2.0	4.2	0.0	0.0
1500-1600	Pro	1.9	57.3	28.1	0.4	2.6	5.6	0.0	4.1	0.0	0.0
	Ocp	1.2	1.5	2.2	1.0	10.3	1.7	0.0	14.6	0.0	0.0
1600-1700	Pro	2.9	57.3	25.3	2.1	2.9	6.6	0.0	2.9	0.0	0.0
	Ocp	1.1	1.7	1.9	3.0	10.1	1.6	0.0	8.6	0.0	0.0
1700-1800	Pro	1.2	57.7	29.8	0.8	4.8	3.6	0.0	2.0	0.0	0.0
	Ocp	1.3	1.6	2.4	1.5	11.3	2.0	0.0	3.6	0.0	0.0
1800-1900 Peak hour	Pro	2.0	54.4	39.7	0.0	2.0	1.0	0.0	1.0	0.0	0.0
	Ocp	1.0	1.7	2.0	0.0	13.3	1.3	0.0	6.3	0.0	0.0
1900-2000	Pro	1.9	60.2	33.4	0.3	1.9	1.0	0.0	1.3	0.0	0.0
	Ocp	1.2	1.5	2.0	1.0	13.7	1.3	0.0	12.8	0.0	0.0
2000-2100	Pro	3.3	57.7	36.3	0.0	1.1	1.1	0.0	0.6	0.0	0.0
	Ocp	1.2	1.5	2.0	0.0	10.0	1.0	0.0	6.0	0.0	0.0
2100-2200	Pro	2.5	45.9	46.7	0.0	3.3	1.6	0.0	0.0	0.0	0.0
	Ocp	1.3	1.4	2.2	0.0	9.3	2.0	0.0	0.0	0.0	0.0
2200-2300	Pro	0.8	51.6	42.6	0.0	4.9	0.0	0.0	0.0	0.0	0.0
	Ocp	1.0	1.6	2.1	0.0	5.2	0.0	0.0	0.0	0.0	0.0
16 hours	Pro	1.8	57.3	30.7	0.7	2.6	4.5	0.1	2.1	0.0	0.0
	Ocp	1.1	1.6	2.0	3.5	11.7	1.7	2.0	9.0	0.0	0.0

Legend

- Pro.** Proportion of vehicles in % (Sum may not add up to 100% due to figure rounding)
- Ocp.** Average occupancy of vehicles
- M&H** Medium and Heavy