

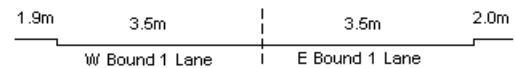
YEAR 2009

COVERAGE (B) STATION 2206

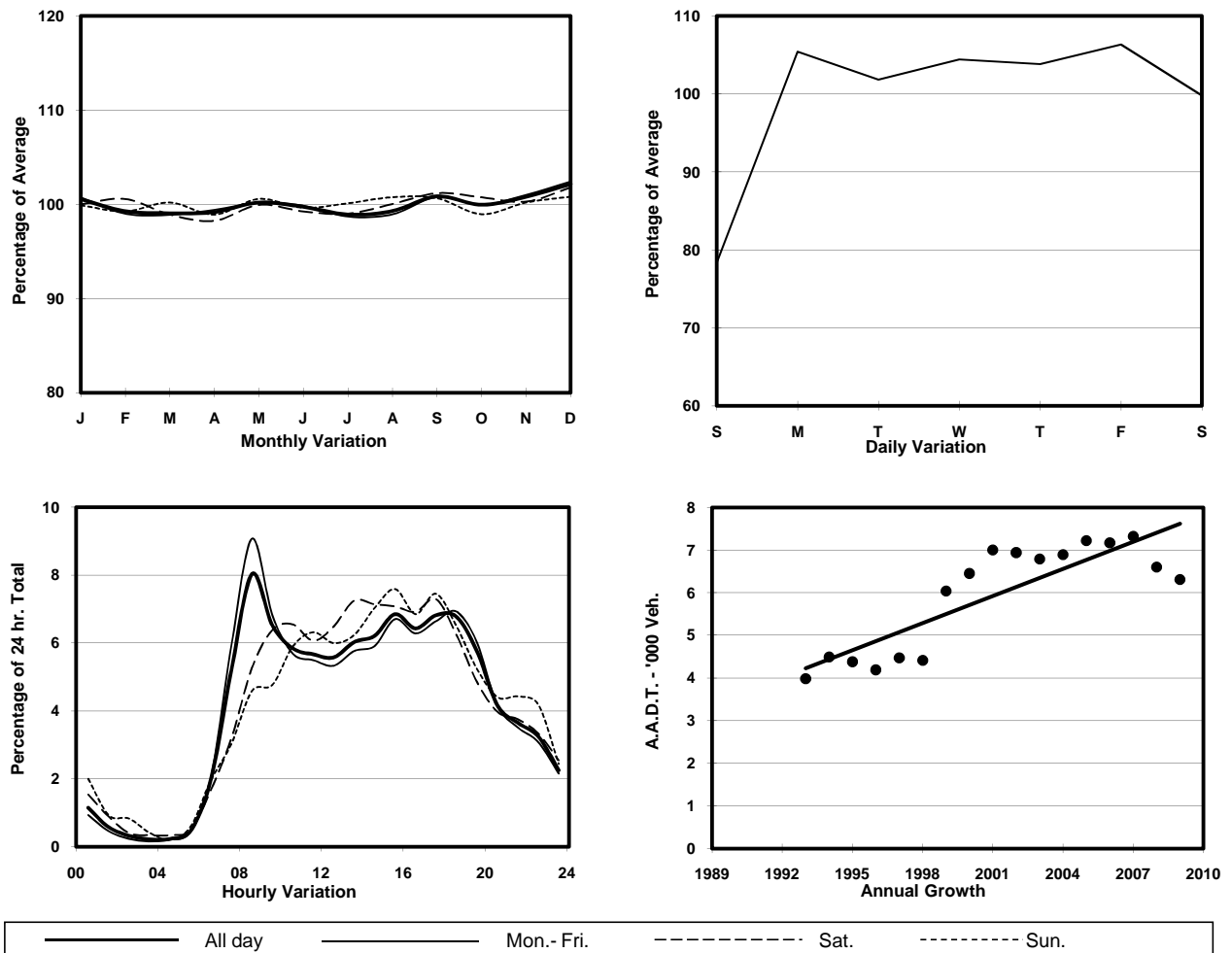
ROAD NETWORK MAJOR

ROAD TYPE DISTRICT DISTRIBUTOR

LINK BELCHER'S ST & VICTORIA RD (from SMITHFIELD RD to MOUNT DAVIS RD)



## 1. TRAFFIC FLOW VARIATION AND GROWTH



## 2. TRAFFIC CHARACTERISTICS (BY DIRECTION)

Parameter	All - Day	Mon. - Fri.	Sat.	Sun.
<b>EAST BOUND</b>				
A.A.D.T.	3040	3210	3040	2460
R 12 / 24 - %	76.4	77.4	76.4	70.5
R 16 / 24 - %	92.8	93.4	91.7	90.5
AM Peak Hour	0800-0900	0800-0900	0900-1000	0800-0900
One-way flow at AM peak hour	270	330	190	120
T - % (AM)	-	14.5	-	-
PM Peak Hour	1700-1800	1700-1800	1700-1800	1700-1800
One-way flow at PM peak hour	220	230	210	180
T - % (PM)	-	21.1	-	-
Prop.of commercial vehicles - 16 hr.	-	14.6	-	-
<b>WEST BOUND</b>				
A.A.D.T.	3270	3450	3330	2540
R 12 / 24 - %	75.6	75.8	75.4	74.1
R 16 / 24 - %	92.8	93.3	91.9	90.6
AM Peak Hour	0800-0900	0800-0900	0900-1000	0900-1000
One-way flow at AM peak hour	230	280	210	130
T - % (AM)	-	21.2	-	-
PM Peak Hour	1800-1900	1800-1900	1700-1800	1700-1800
One-way flow at PM peak hour	220	230	260	190
T - % (PM)	-	8.9	-	-
Prop.of commercial vehicles - 16 hr.	-	14.1	-	-

## 3. OTHER INFORMATION AND COMMENT

**4. Vehicle classification and occupancy - Monday to Friday**

Time		Class of vehicle									
		Motor	Private	Taxi	Private	PLB	Goods veh.		Non	Fr. Bus	
		Cycle	Car		LB		Light	M & H	Fr. Bus	SD	DD
0700-0800	Pro	4.1	24.3	24.3	2.7	20.3	9.5	2.7	2.7	3.4	6.1
	Ocp	1.0	1.6	2.2	12.0	12.8	1.7	2.0	16.5	26.4	14.4
0800-0900	Pro	2.3	48.6	7.4	8.0	6.3	9.7	5.1	8.6	2.1	1.9
	Ocp	1.0	1.7	1.9	9.4	16.4	1.3	1.9	22.7	18.7	11.8
0900-1000	Pro	2.6	38.4	12.8	1.7	7.7	17.9	9.4	3.4	2.8	3.4
	Ocp	1.0	1.6	1.6	3.0	12.6	1.8	1.6	23.0	17.3	6.1
1000-1100	Pro	2.8	40.5	14.1	1.9	8.5	20.7	4.7	0.9	2.8	3.1
	Ocp	1.0	1.5	1.5	3.5	11.7	2.0	1.4	7.0	10.0	4.5
1100-1200	Pro	2.3	30.1	9.3	8.1	12.8	24.3	7.0	0.0	3.2	2.9
	Ocp	1.0	1.6	2.1	2.6	10.0	2.0	1.3	0.0	13.7	4.8
1200-1300	Pro	1.1	33.9	14.8	3.2	12.7	16.9	5.3	6.4	2.6	3.2
	Ocp	1.0	2.1	2.1	4.3	11.5	2.1	1.6	6.7	12.8	6.5
1300-1400	Pro	3.8	19.8	22.1	0.8	9.9	30.4	7.6	1.5	2.3	1.9
	Ocp	1.0	1.6	1.8	3.0	12.9	1.9	1.2	2.5	11.5	6.5
1400-1500	Pro	3.4	34.1	11.4	1.1	14.8	21.6	4.5	2.3	3.1	3.7
	Ocp	1.0	1.4	1.8	4.0	12.9	2.1	1.5	1.0	10.8	5.2
1500-1600	Pro	4.0	32.5	13.5	4.8	11.9	20.6	4.8	3.2	2.6	2.2
	Ocp	1.0	1.7	2.4	4.5	10.4	1.9	1.3	7.5	15.0	4.5
1600-1700	Pro	7.0	32.2	14.1	5.0	11.1	16.1	2.0	6.0	3.8	2.8
	Ocp	1.0	1.4	1.9	3.6	12.3	1.6	2.0	6.3	17.1	10.5
1700-1800	Pro	6.7	29.9	14.5	1.9	14.5	12.5	5.8	7.7	2.9	3.6
	Ocp	1.1	1.4	1.7	3.0	13.2	1.6	1.7	10.0	20.3	11.1
1800-1900	Pro	3.6	57.3	14.3	0.9	10.7	3.6	0.9	2.7	3.4	2.7
	Ocp	1.0	1.5	1.9	1.0	13.5	1.0	1.0	17.7	23.1	9.9
1900-2000	Pro	5.2	41.9	23.6	0.0	14.0	6.1	0.0	3.5	2.8	2.8
	Ocp	1.0	1.5	1.9	0.0	13.1	1.0	0.0	23.3	16.7	5.0
2000-2100	Pro	0.0	37.5	34.7	0.0	15.3	1.4	1.4	0.0	5.2	4.5
	Ocp	0.0	1.7	1.9	0.0	9.4	2.0	3.0	0.0	12.7	3.5
2100-2200	Pro	3.5	29.6	27.8	0.0	17.4	5.2	5.2	1.7	6.1	3.5
	Ocp	1.5	1.3	1.6	0.0	8.4	1.7	2.0	1.0	13.1	2.3
2200-2300	Pro	0.0	26.5	35.4	0.0	24.3	0.0	0.0	0.0	6.6	7.2
	Ocp	0.0	1.8	1.8	0.0	7.8	0.0	0.0	0.0	12.9	3.3
16 hours	Pro	3.4	36.0	16.7	2.9	12.1	14.5	4.4	3.6	3.2	3.1
	Ocp	1.0	1.6	1.9	5.6	11.9	1.8	1.6	14.0	15.8	7.2

**Legend**

**Pro.** Proportion of vehicles in % (Sum may not add up to 100% due to figure rounding)  
**Ocp.** Average occupancy of vehicles  
**M&H** Medium and Heavy