

YEAR

2009

LINK CONNAUGHT RD C (from CLEVERLY ST to GILMAN ST)

COVERAGE (B) STATION

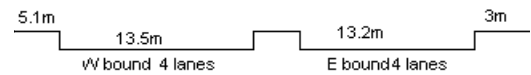
2207

ROAD NETWORK

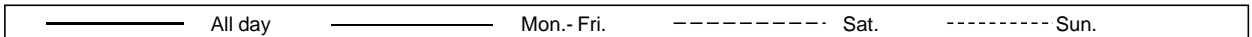
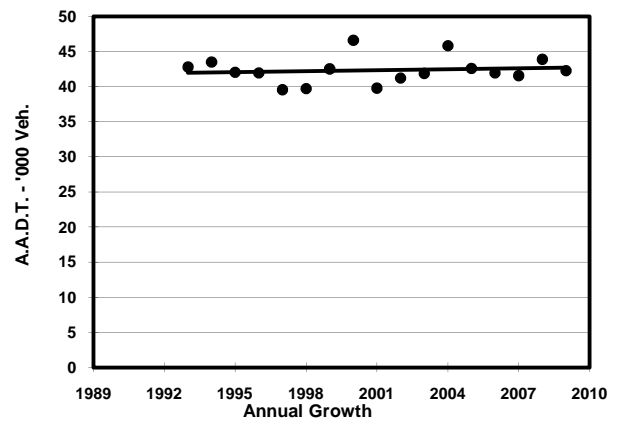
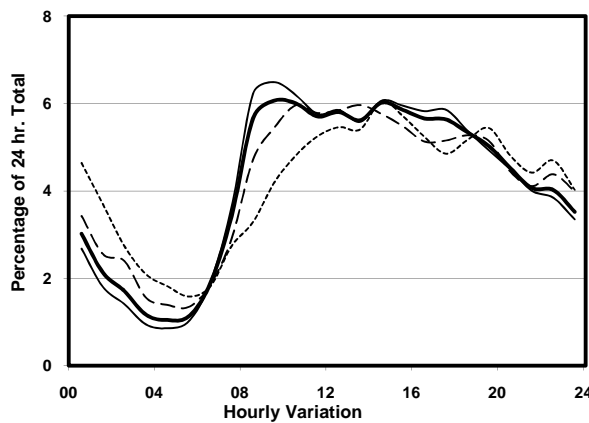
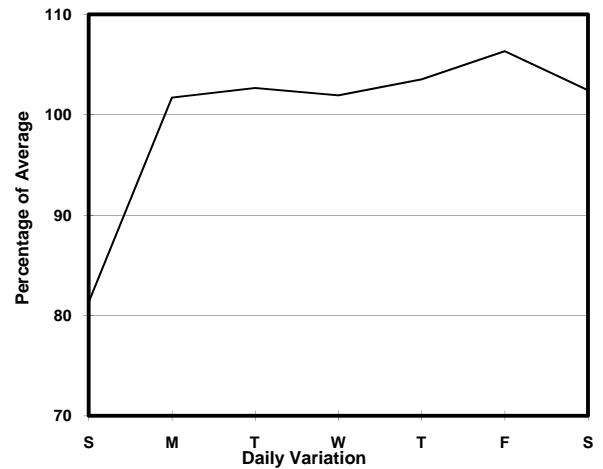
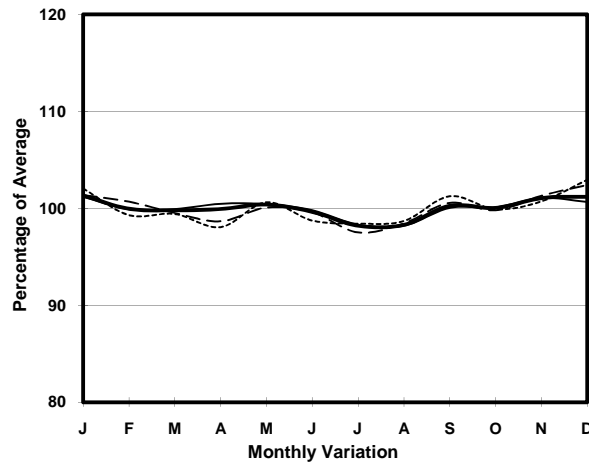
MAJOR

ROAD TYPE

PRIMARY DISTRIBUTOR



1. TRAFFIC FLOW VARIATION AND GROWTH



2. TRAFFIC CHARACTERISTICS (BY DIRECTION)

Parameter	All - Day	Mon. - Fri.	Sat.	Sun.
EAST BOUND				
A.A.D.T.	25980	27160	26830	21060
R 12 / 24 - %	64.5	66.8	60.8	55.2
R 16 / 24 - %	82.9	84.9	78.9	75.1
AM Peak Hour	0900-1000	0800-0900	0900-1000	0900-1000
One-way flow at AM peak hour	1520	1750	1390	840
T - % (AM)	-	30.3	-	-
PM Peak Hour	1600-1700	1600-1700	1800-1900	1800-1900
One-way flow at PM peak hour	1430	1550	1390	1080
T - % (PM)	-	15.3	-	-
Prop.of commercial vehicles - 16 hr.	-	17.1	-	-
WEST BOUND				
A.A.D.T.	16260	16880	16890	13670
R 12 / 24 - %	70.3	72.1	67.6	62.8
R 16 / 24 - %	86.8	87.9	85.6	81.4
AM Peak Hour	0900-1000	0900-1000	0900-1000	0900-1000
One-way flow at AM peak hour	1040	1150	990	630
T - % (AM)	-	12.1	-	-
PM Peak Hour	1700-1800	1700-1800	1600-1700	1600-1700
One-way flow at PM peak hour	980	1060	970	750
T - % (PM)	-	11.1	-	-
Prop.of commercial vehicles - 16 hr.	-	11.5	-	-

3. OTHER INFORMATION AND COMMENT

4. Vehicle classification and occupancy - Monday to Friday

Time		Class of vehicle									
		Motor	Private	Taxi	Private	PLB	Goods veh.		Non	Fr. Bus	
		Cycle	Car		LB		Light	M & H	Fr. Bus	SD	DD
0700-0800	Pro	0.9	9.4	42.7	0.3	4.6	13.1	5.1	7.1	0.3	16.6
	Ocp	1.0	1.3	1.8	5.0	11.8	1.7	1.4	13.8	13.3	26.4
0800-0900	Pro	1.8	18.2	39.9	0.1	2.7	11.7	1.3	9.9	0.2	14.1
	Ocp	1.1	1.5	1.9	3.0	12.7	1.6	1.2	28.3	24.5	38.1
0900-1000 Peak hour	Pro	2.3	20.7	41.3	0.5	3.1	15.3	1.7	3.8	0.1	11.1
	Ocp	1.1	1.4	1.8	3.3	9.9	1.7	2.1	23.9	10.5	19.0
1000-1100	Pro	1.9	21.6	39.3	0.7	3.6	19.8	1.9	1.8	0.3	9.0
	Ocp	1.0	1.6	1.8	2.6	6.4	1.6	1.5	10.6	6.8	15.9
1100-1200	Pro	2.0	23.1	37.4	1.1	3.2	21.1	3.2	1.2	0.1	7.4
	Ocp	1.0	1.3	1.9	2.4	7.3	1.6	1.8	9.9	7.3	19.1
1200-1300	Pro	3.3	29.7	36.0	0.9	2.2	15.7	1.9	1.7	0.3	8.3
	Ocp	1.1	1.4	2.0	4.8	7.5	1.7	2.0	10.9	4.7	14.9
1300-1400	Pro	2.5	27.8	36.0	0.6	1.9	18.3	3.1	1.9	0.2	7.6
	Ocp	1.1	1.5	1.8	2.3	7.5	1.7	1.5	13.4	7.0	13.8
1400-1500	Pro	2.4	25.9	43.2	0.4	2.4	17.0	0.7	0.9	0.2	6.9
	Ocp	1.1	1.6	2.0	3.0	8.0	1.8	1.4	5.2	10.2	13.1
1500-1600	Pro	3.5	34.4	32.6	1.4	1.8	14.7	2.0	1.2	0.1	8.4
	Ocp	1.1	1.6	2.0	3.7	8.1	1.8	1.3	8.4	11.3	13.5
1600-1700	Pro	3.0	33.2	33.1	0.9	1.6	14.9	1.3	2.5	0.3	9.3
	Ocp	1.1	1.6	2.1	3.3	8.2	1.8	1.5	6.1	8.9	11.8
1700-1800	Pro	2.9	31.1	38.1	0.3	1.8	11.1	0.7	1.8	0.1	12.1
	Ocp	1.1	1.5	1.9	2.5	9.1	1.6	1.5	10.5	6.0	14.1
1800-1900	Pro	4.2	37.9	31.7	1.3	2.2	5.3	0.4	3.5	0.2	13.3
	Ocp	1.0	1.5	2.1	2.9	10.8	1.8	1.5	37.6	7.4	19.7
1900-2000	Pro	2.6	35.9	41.5	0.5	2.1	2.4	0.3	2.6	0.2	11.9
	Ocp	1.1	1.6	2.0	2.3	9.3	1.6	2.0	11.6	10.0	14.5
2000-2100	Pro	1.6	22.5	57.3	0.6	2.6	2.4	0.8	1.2	0.1	11.0
	Ocp	1.1	1.6	1.8	2.3	8.5	1.6	2.0	14.7	4.3	10.4
2100-2200	Pro	1.4	21.9	59.1	0.2	2.8	1.6	0.5	1.2	0.1	11.3
	Ocp	1.2	1.7	1.9	1.0	6.3	1.9	2.5	13.8	2.0	10.5
2200-2300	Pro	2.0	22.6	58.4	0.0	2.8	0.8	0.0	0.5	0.1	12.8
	Ocp	1.4	1.8	2.0	0.0	6.1	1.0	0.0	14.5	2.5	11.6
16 hours	Pro	2.5	26.5	40.7	0.7	2.5	12.4	1.6	2.7	0.2	10.4
	Ocp	1.1	1.5	1.9	3.1	8.6	1.7	1.6	19.0	9.3	17.7

Legend

- Pro.** Proportion of vehicles in % (Sum may not add up to 100% due to figure rounding)
- Ocp.** Average occupancy of vehicles
- M&H** Medium and Heavy