

YEAR 2009

COVERAGE (B) STATION 2209

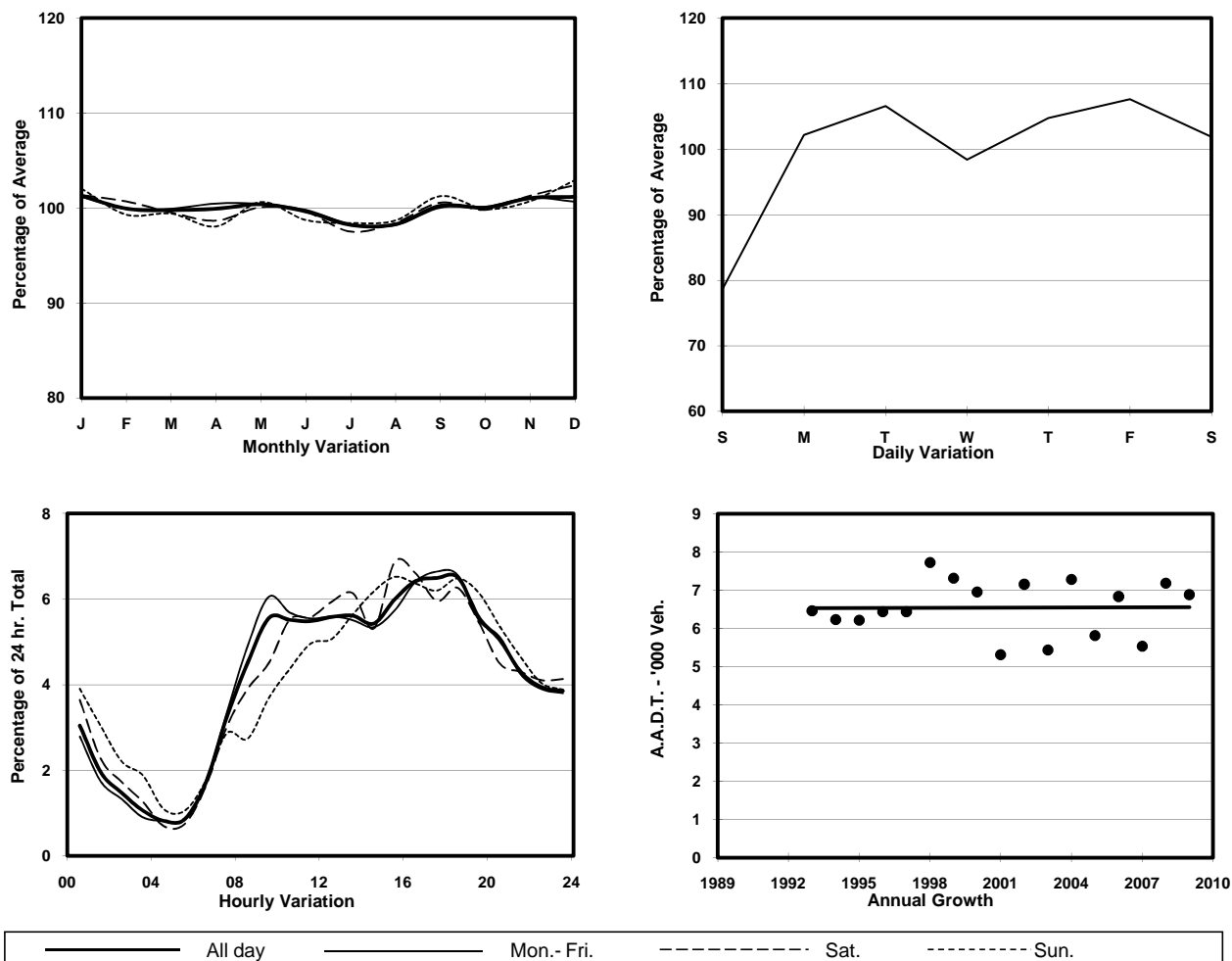
ROAD NETWORK MAJOR

ROAD TYPE DISTRICT DISTRIBUTOR

LINK DES VOEUX RD C (from MORRISON ST to QUEEN VICTORIA ST)



1. TRAFFIC FLOW VARIATION AND GROWTH



2. TRAFFIC CHARACTERISTICS (BY DIRECTION)

Parameter	All - Day	Mon. - Fri.	Sat.	Sun.
EAST BOUND				
A.A.D.T.	4550	4780	4820	3480
R 12 / 24 - %	65.2	66.3	64.6	58.3
R 16 / 24 - %	83.3	84.3	81.9	77.6
AM Peak Hour	0900-1000	0900-1000	0900-1000	0900-1000
One-way flow at AM peak hour	220	270	170	90
T - % (AM)	-	17.6	-	-
PM Peak Hour	1600-1700	1700-1800	1600-1700	1800-1900
One-way flow at PM peak hour	310	320	330	240
T - % (PM)	-	12.3	-	-
Prop.of commercial vehicles - 16 hr.	-	14.8	-	-
WEST BOUND				
A.A.D.T.	2330	2460	2280	2000
R 12 / 24 - %	68.7	69.4	67.5	65.8
R 16 / 24 - %	89.1	89.5	88.1	87.5
AM Peak Hour	0900-1000	0900-1000	0900-1000	0900-1000
One-way flow at AM peak hour	160	170	150	110
T - % (AM)	-	93.2	-	-
PM Peak Hour	1800-1900	1800-1900	1600-1700	1800-1900
One-way flow at PM peak hour	150	170	140	120
T - % (PM)	-	96.5	-	-
Prop.of commercial vehicles - 16 hr.	-	88.5	-	-

3. OTHER INFORMATION AND COMMENT

4. Vehicle classification and occupancy - Monday to Friday

Time		Class of vehicle									
		Motor	Private	Taxi	Private	PLB	Goods veh.		Non	Fr. Bus	
		Cycle	Car		LB		Light	M & H	Fr. Bus	SD	DD
0700-0800	Pro	0.0	2.5	12.3	0.0	0.0	14.7	2.5	0.0	3.1	65.0
	Ocp	0.0	1.0	1.0	0.0	0.0	1.5	1.0	0.0	24.4	30.1
0800-0900	Pro	0.0	3.1	18.3	0.0	0.0	21.4	1.5	9.2	1.5	45.0
	Ocp	0.0	1.5	1.7	0.0	0.0	2.0	2.0	4.2	44.8	38.9
0900-1000	Pro	5.8	24.3	16.2	1.2	0.0	9.3	0.0	0.0	0.6	42.6
	Ocp	1.0	1.1	1.6	2.0	0.0	1.5	0.0	0.0	30.0	23.6
1000-1100	Pro	0.0	17.3	13.6	0.0	0.0	30.9	1.2	1.2	0.3	35.5
	Ocp	0.0	1.1	1.3	0.0	0.0	1.6	1.0	1.0	30.0	19.5
1100-1200	Pro	4.6	19.5	24.1	1.2	0.0	20.7	2.3	0.0	0.6	27.0
	Ocp	1.0	1.4	1.2	1.0	0.0	1.8	3.0	0.0	12.0	20.5
1200-1300	Pro	1.3	33.9	17.6	0.0	0.0	13.8	0.0	0.0	0.3	33.2
	Ocp	1.0	1.5	1.8	0.0	0.0	1.9	0.0	0.0	17.0	21.8
1300-1400	Pro	2.5	26.1	16.2	0.0	0.0	22.4	0.0	0.0	0.6	32.3
	Ocp	1.0	1.4	1.2	0.0	0.0	1.6	0.0	0.0	21.0	22.0
1400-1500	Pro	1.1	32.9	20.8	2.2	0.0	15.3	0.0	0.0	0.3	27.4
	Ocp	1.0	1.6	1.4	6.5	0.0	1.9	0.0	0.0	2.0	18.6
1500-1600	Pro	0.0	32.0	19.8	0.9	0.0	21.6	0.0	0.0	0.5	25.2
	Ocp	0.0	1.3	1.7	4.0	0.0	1.5	0.0	0.0	11.5	21.9
1600-1700	Pro	1.2	40.2	1.2	0.0	0.0	20.1	1.2	0.0	0.3	35.8
	Ocp	1.0	1.5	2.0	0.0	0.0	1.6	3.0	0.0	14.0	29.8
1700-1800 Peak hour	Pro	0.0	33.3	23.4	0.0	0.0	11.7	0.9	0.0	0.5	30.2
	Ocp	0.0	1.4	1.5	0.0	0.0	1.5	3.0	0.0	20.0	36.8
1800-1900	Pro	0.9	33.2	21.5	0.0	0.0	9.0	0.9	1.8	0.2	32.5
	Ocp	1.0	1.3	1.5	0.0	0.0	1.5	1.0	2.5	19.0	49.4
1900-2000	Pro	0.0	28.4	36.5	1.0	0.0	2.0	1.0	0.0	0.5	30.6
	Ocp	0.0	1.7	1.3	3.0	0.0	2.0	3.0	0.0	7.0	37.5
2000-2100	Pro	0.0	15.5	54.3	0.0	0.0	0.0	1.1	0.0	0.3	28.8
	Ocp	0.0	2.0	1.0	0.0	0.0	0.0	1.0	0.0	15.0	28.6
2100-2200	Pro	0.0	8.3	61.7	0.0	0.0	1.2	0.0	0.0	0.6	28.2
	Ocp	0.0	1.6	1.3	0.0	0.0	1.0	0.0	0.0	6.5	32.1
2200-2300	Pro	0.0	7.5	62.9	0.0	0.0	2.1	0.0	0.0	0.0	27.5
	Ocp	0.0	1.6	1.2	0.0	0.0	2.5	0.0	0.0	0.0	33.1
16 hours	Pro	1.1	23.8	27.1	0.4	0.0	13.1	0.7	0.6	0.5	32.7
	Ocp	1.0	1.5	1.3	3.8	0.0	1.7	2.1	3.4	21.2	29.6

Legend

Pro. Proportion of vehicles in % (Sum may not add up to 100% due to figure rounding)
Ocp. Average occupancy of vehicles
M&H Medium and Heavy