

YEAR 2009

COVER AGE (B) STATION 2215

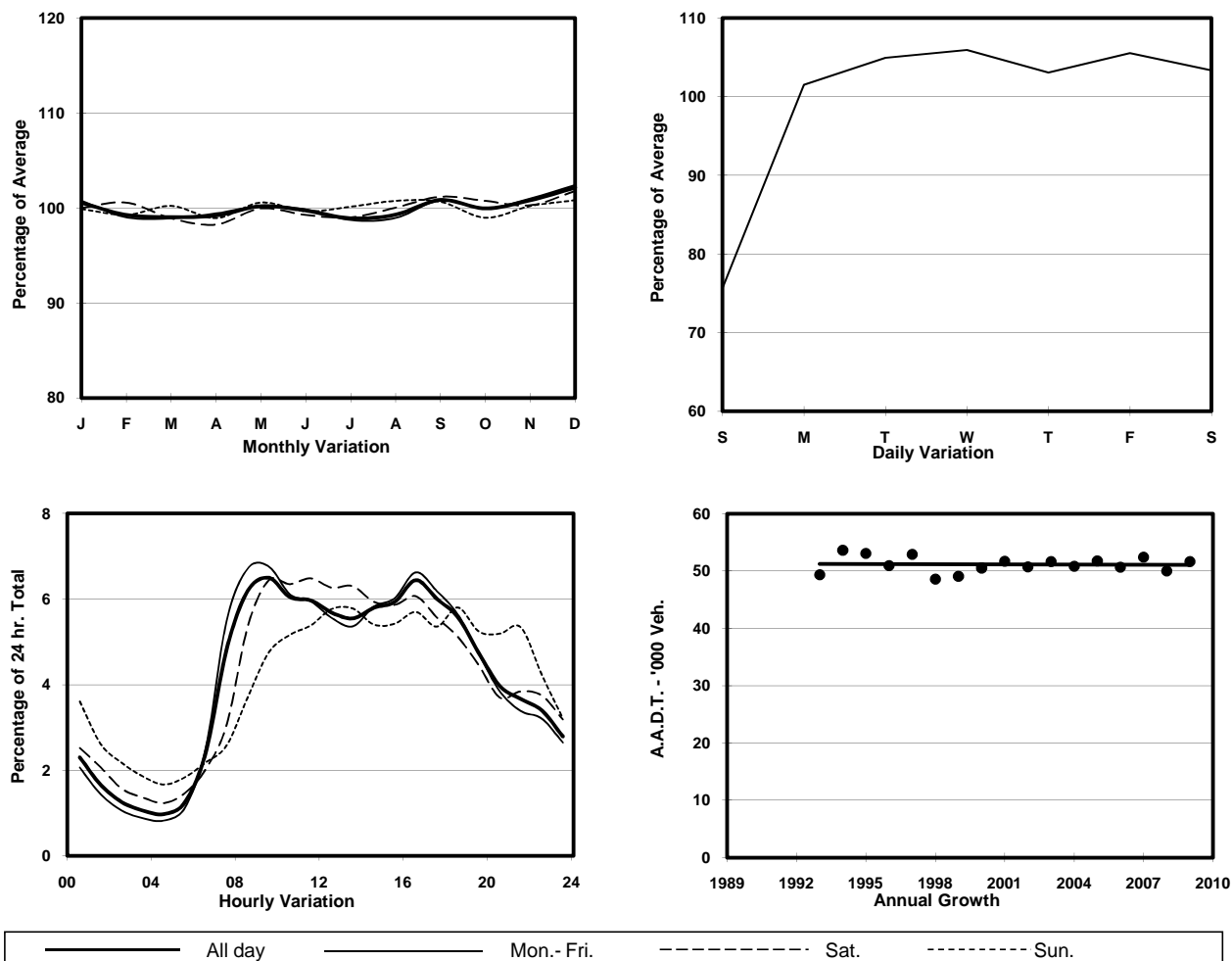
ROAD NETWORK MAJOR

ROAD TYPE EXPRESSWAY

LINK ISLAND EASTERN CORRIDOR (from MONG LUNG ST to WING TAI RD INT)



## 1. TRAFFIC FLOW VARIATION AND GROWTH



## 2. TRAFFIC CHARACTERISTICS (BY DIRECTION)

Parameter	All - Day	Mon. - Fri.	Sat.	Sun.
<b>EAST BOUND</b>				
A.A.D.T.	25690	27070	27000	19870
R 12 / 24 - %	68.9	70.9	66.9	58.4
R 16 / 24 - %	86.1	87.4	84.1	80.3
AM Peak Hour	0900-1000	0900-1000	0900-1000	0900-1000
One-way flow at AM peak hour	1680	1890	1610	820
T - % (AM)	-	15.6	-	-
PM Peak Hour	1600-1700	1600-1700	1600-1700	1600-1700
One-way flow at PM peak hour	1710	1850	1690	1200
T - % (PM)	-	13.2	-	-
Prop.of commercial vehicles - 16 hr.	-	13.5	-	-
<b>WEST BOUND</b>				
A.A.D.T.	25960	27470	27100	19700
R 12 / 24 - %	72.1	73.6	70.8	63.3
R 16 / 24 - %	86.4	87.5	85	81.4
AM Peak Hour	0800-0900	0800-0900	0900-1000	0900-1000
One-way flow at AM peak hour	1760	2030	1880	1060
T - % (AM)	-	9.5	-	-
PM Peak Hour	1600-1700	1600-1700	1600-1700	1800-1900
One-way flow at PM peak hour	1620	1760	1590	1130
T - % (PM)	-	16.2	-	-
Prop.of commercial vehicles - 16 hr.	-	13.4	-	-

## 3. OTHER INFORMATION AND COMMENT

**4. Vehicle classification and occupancy - Monday to Friday**

Time		Class of vehicle									
		Motor	Private	Taxi	Private	PLB	Goods veh.		Non	Fr. Bus	
		Cycle	Car		LB		Light	M & H	Fr. Bus	SD	DD
0700-0800	Pro	5.7	22.2	31.4	2.3	0.0	18.4	7.3	6.8	0.1	5.8
	Ocp	1.1	1.3	1.8	6.1	0.0	1.6	1.6	22.7	1.0	35.1
0800-0900	Pro	4.3	37.4	26.5	1.4	0.0	19.1	3.7	4.5	0.1	3.0
	Ocp	1.2	1.4	1.7	2.9	0.0	1.6	1.6	9.8	1.0	59.3
0900-1000 Peak hour	Pro	3.6	33.0	18.2	1.2	0.1	31.0	6.7	2.2	0.1	3.9
	Ocp	1.0	1.4	1.7	1.7	1.0	1.7	1.4	3.4	1.0	21.3
1000-1100	Pro	2.8	26.8	21.3	1.5	0.0	35.0	7.7	1.4	0.1	3.3
	Ocp	1.1	1.3	1.7	3.5	0.0	1.6	1.6	3.3	1.0	14.6
1100-1200	Pro	3.3	22.4	18.6	2.0	0.3	40.5	8.6	2.0	0.1	2.3
	Ocp	1.1	1.4	1.6	2.5	1.0	1.7	1.7	4.7	1.0	19.4
1200-1300	Pro	3.5	25.7	17.7	2.6	0.0	34.9	8.2	5.1	0.1	2.1
	Ocp	1.0	1.5	1.8	2.6	0.0	1.6	1.7	11.6	1.0	23.5
1300-1400	Pro	2.5	27.2	16.9	1.8	0.0	37.6	8.2	3.7	0.1	1.9
	Ocp	1.1	1.4	1.7	1.5	0.0	1.6	1.4	9.0	1.0	26.5
1400-1500	Pro	3.5	26.4	15.2	2.4	0.0	36.9	8.5	4.3	0.1	2.8
	Ocp	1.0	1.4	1.5	3.1	0.0	1.5	1.3	2.2	1.0	17.2
1500-1600	Pro	2.6	26.6	15.0	3.1	0.0	36.1	10.9	3.1	0.1	2.7
	Ocp	1.1	1.3	1.8	3.5	0.0	1.8	1.2	18.7	1.0	15.9
1600-1700	Pro	3.6	25.3	23.5	2.3	0.0	30.6	6.1	4.8	0.0	3.8
	Ocp	1.1	1.4	1.7	3.5	0.0	1.7	1.6	7.9	0.0	17.5
1700-1800	Pro	5.7	33.5	17.0	1.4	0.0	27.8	5.8	4.7	0.0	4.1
	Ocp	1.1	1.4	1.7	1.8	0.0	1.6	1.4	5.7	0.0	25.9
1800-1900	Pro	5.6	49.9	19.1	0.7	0.0	15.9	2.5	2.7	0.0	3.6
	Ocp	1.0	1.3	2.0	4.2	0.0	1.7	1.6	6.9	0.0	45.0
1900-2000	Pro	5.0	51.2	16.6	1.1	0.0	15.8	3.3	2.4	0.2	4.5
	Ocp	1.1	1.4	1.8	2.3	0.0	1.7	1.8	1.1	1.0	30.7
2000-2100	Pro	6.0	46.7	22.7	0.4	0.0	10.1	3.0	2.4	0.7	8.0
	Ocp	1.2	1.4	1.9	1.0	0.0	1.3	1.4	2.6	1.0	12.1
2100-2200	Pro	8.9	43.4	25.2	0.2	0.2	10.7	2.8	0.7	0.4	7.5
	Ocp	1.2	1.3	1.8	1.0	1.0	1.5	1.2	1.0	1.0	13.9
2200-2300	Pro	5.8	41.3	37.1	0.9	0.0	6.3	1.3	1.1	0.0	6.1
	Ocp	1.2	1.5	1.8	1.8	0.0	1.6	2.0	1.0	0.0	14.0
16 hours	Pro	4.3	32.9	20.9	1.7	0.1	26.9	6.2	3.4	0.1	3.8
	Ocp	1.1	1.4	1.7	3.0	1.0	1.6	1.5	9.0	1.0	24.6

**Legend**

- Pro.** Proportion of vehicles in % (Sum may not add up to 100% due to figure rounding)
- Ocp.** Average occupancy of vehicles
- M&H** Medium and Heavy