

YEAR 2009

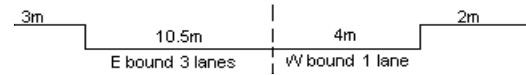
LINK

BOUNDARY ST (from TAI HANG TUNG RD to EMBANKMENT RD)

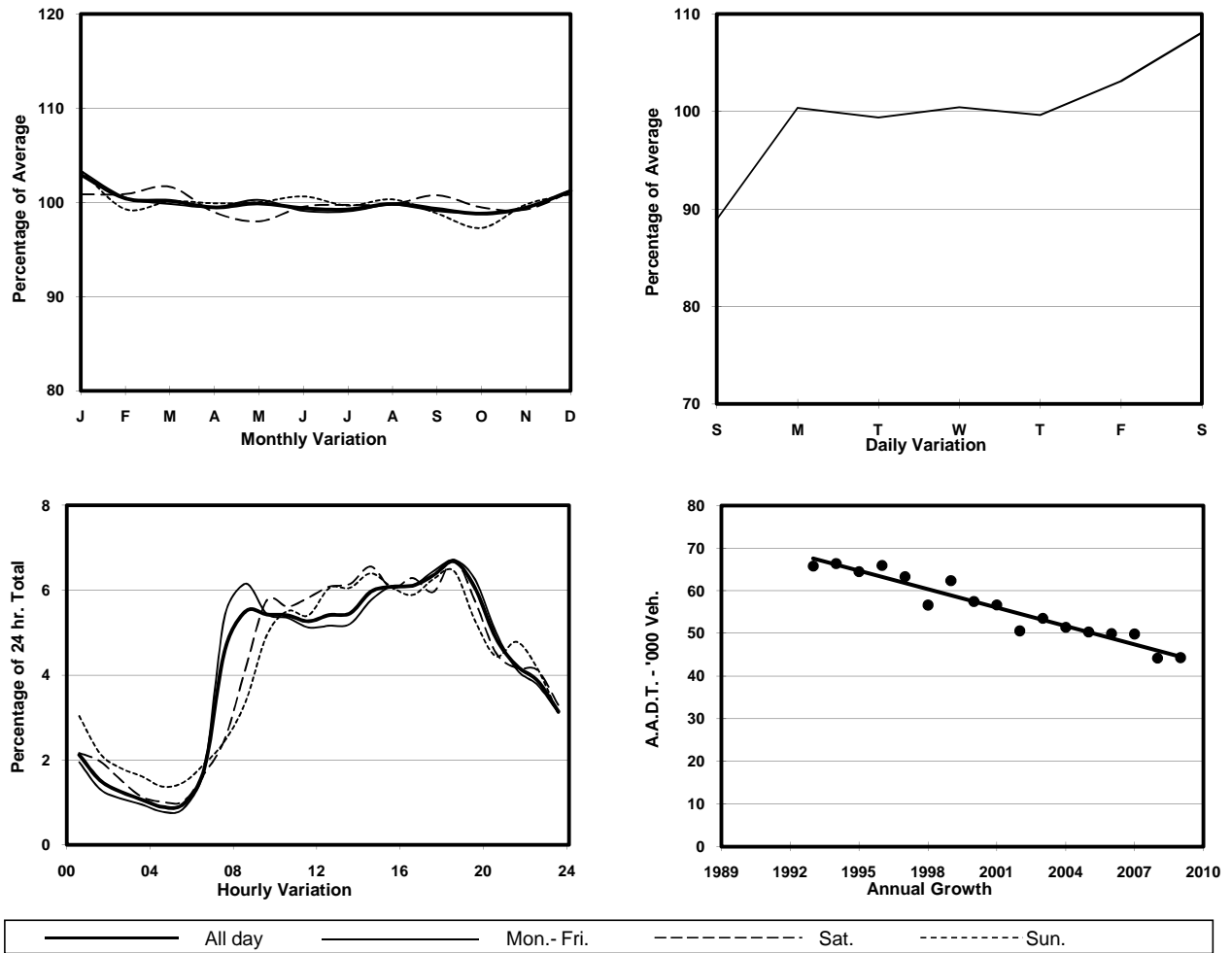
COVERAGE (B) STATION 4202

ROAD NETWORK MAJOR

ROAD TYPE PRIMARY DISTRIBUTOR



1. TRAFFIC FLOW VARIATION AND GROWTH



2. TRAFFIC CHARACTERISTICS (BY DIRECTION)

Parameter	All - Day	Mon. - Fri.	Sat.	Sun.
EAST BOUND				
A.A.D.T.	36370	36880	39770	32100
R 12 / 24 - %	68.1	68.8	67.7	64.5
R 16 / 24 - %	87.1	88	86.2	83
AM Peak Hour	0900-1000	0800-0900	0900-1000	0900-1000
One-way flow at AM peak hour	2030	2290	2350	1570
T - % (AM)	-	8.9	-	-
PM Peak Hour	1800-1900	1800-1900	1800-1900	1800-1900
One-way flow at PM peak hour	2440	2480	2690	2110
T - % (PM)	-	4.8	-	-
Prop.of commercial vehicles - 16 hr.	-	7.4	-	-
WEST BOUND				
A.A.D.T.	7940	7970	8460	7600
R 12 / 24 - %	69.2	70.1	67.2	66.5
R 16 / 24 - %	88.2	89.1	86	85.7
AM Peak Hour	0700-0800	0700-0800	0900-1000	0900-1000
One-way flow at AM peak hour	470	570	430	390
T - % (AM)	-	18.6	-	-
PM Peak Hour	1600-1700	1600-1700	1800-1900	1600-1700
One-way flow at PM peak hour	530	540	550	470
T - % (PM)	-	12.6	-	-
Prop.of commercial vehicles - 16 hr.	-	8.7	-	-

3. OTHER INFORMATION AND COMMENT

4. Vehicle classification and occupancy - Monday to Friday

Time		Class of vehicle									
		Motor	Private	Taxi	Private	PLB	Goods veh.		Non	Fr. Bus	
		Cycle	Car		LB		Light	M & H	Fr. Bus	SD	DD
0700-0800	Pro	3.5	17.1	39.5	4.4	8.6	13.4	1.7	8.3	0.3	3.3
	Ocp	1.1	1.5	2.1	6.3	11.5	1.6	1.3	17.8	12.7	32.0
0800-0900	Pro	3.2	41.2	23.8	2.0	4.8	15.5	2.9	4.6	0.2	2.0
	Ocp	1.1	1.5	1.9	6.5	12.5	1.9	1.4	14.2	15.3	30.0
0900-1000	Pro	2.6	33.7	25.1	1.8	6.4	24.0	1.6	1.8	0.3	2.7
	Ocp	1.2	1.4	1.8	2.3	7.7	1.8	1.5	6.0	7.9	17.7
1000-1100	Pro	3.0	30.2	29.0	2.4	5.6	21.8	3.4	1.9	0.2	2.5
	Ocp	1.2	1.4	1.7	1.4	8.0	1.7	1.7	5.2	10.7	19.1
1100-1200	Pro	1.8	33.9	21.9	3.0	5.9	24.7	2.6	3.5	0.3	2.4
	Ocp	1.0	1.5	1.7	2.7	7.2	1.6	1.9	2.0	10.6	22.2
1200-1300	Pro	3.0	32.5	27.2	2.0	5.7	20.2	2.6	4.1	0.3	2.6
	Ocp	1.0	1.6	1.9	3.7	9.1	1.6	1.4	6.9	9.0	24.6
1300-1400	Pro	2.9	33.5	25.9	2.9	4.4	19.4	1.9	6.4	0.2	2.4
	Ocp	1.1	1.6	1.8	5.5	9.4	1.6	1.1	8.2	8.2	26.9
1400-1500	Pro	4.1	32.7	27.1	2.1	5.1	20.1	2.4	3.7	0.2	2.5
	Ocp	1.1	1.5	1.9	3.5	8.6	1.7	1.5	5.0	9.6	27.4
1500-1600	Pro	2.7	37.1	23.0	1.4	4.8	22.6	2.8	3.0	0.2	2.4
	Ocp	1.0	1.6	2.0	5.1	9.1	1.6	1.5	9.7	14.9	28.9
1600-1700	Pro	3.8	36.6	26.3	1.4	5.8	16.9	2.6	4.3	0.2	2.2
	Ocp	1.1	1.5	1.8	3.4	10.6	1.6	1.2	2.1	19.0	38.8
1700-1800	Pro	5.4	36.8	26.3	0.7	4.6	18.6	2.5	1.9	0.2	3.0
	Ocp	1.1	1.6	1.9	1.2	12.5	1.7	1.5	2.6	17.0	36.7
1800-1900 Peak hour	Pro	6.3	44.7	28.4	0.3	5.2	10.6	0.6	1.5	0.2	2.2
	Ocp	1.1	1.5	2.2	6.3	15.4	1.6	1.2	10.9	15.9	60.5
1900-2000	Pro	4.9	47.2	29.3	0.6	4.6	9.4	0.7	0.8	0.1	2.3
	Ocp	1.1	1.7	2.0	1.6	16.0	1.6	1.3	3.1	11.0	53.8
2000-2100	Pro	3.6	44.5	35.2	0.3	4.1	8.0	0.6	0.9	0.2	2.4
	Ocp	1.1	1.9	1.8	1.0	13.8	1.6	1.0	7.5	5.0	49.5
2100-2200	Pro	3.7	36.7	41.6	0.5	4.8	7.7	1.1	0.4	0.2	3.3
	Ocp	1.3	1.7	2.0	1.7	10.1	1.5	1.3	2.0	5.4	42.0
2200-2300	Pro	3.1	43.7	38.2	0.4	5.1	4.7	0.2	0.6	0.3	3.7
	Ocp	1.2	1.8	1.9	1.0	10.1	1.8	1.0	6.7	4.6	42.5
16 hours	Pro	3.7	36.9	28.6	1.6	5.3	16.2	1.9	3.0	0.2	2.5
	Ocp	1.1	1.6	1.9	4.0	10.8	1.7	1.4	8.5	11.2	34.9

Legend

Pro. Proportion of vehicles in % (Sum may not add up to 100% due to figure rounding)
Ocp. Average occupancy of vehicles
M&H Medium and Heavy