

YEAR 2009

COVERAGE (B) STATION 4204

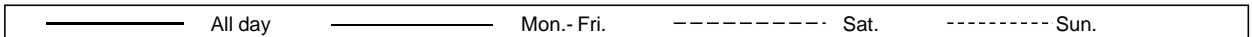
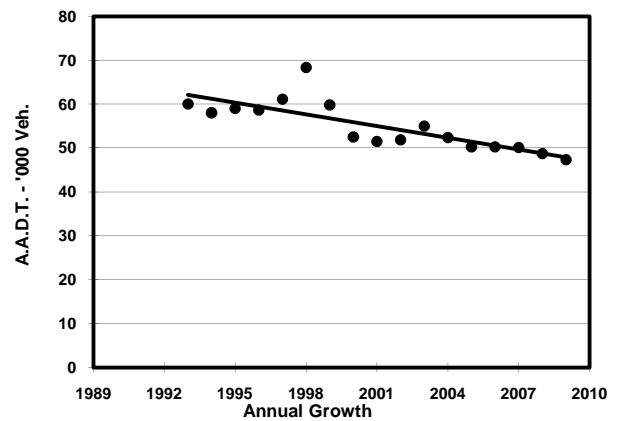
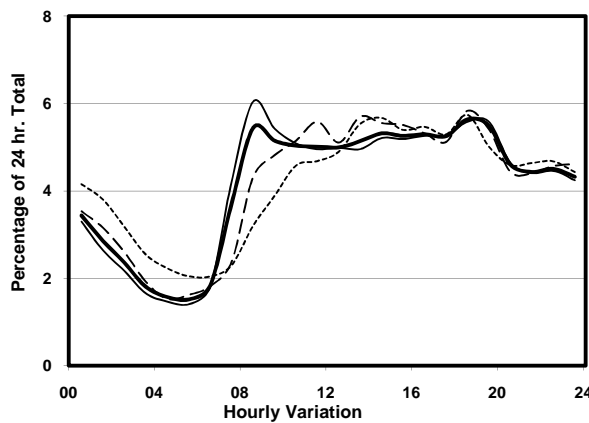
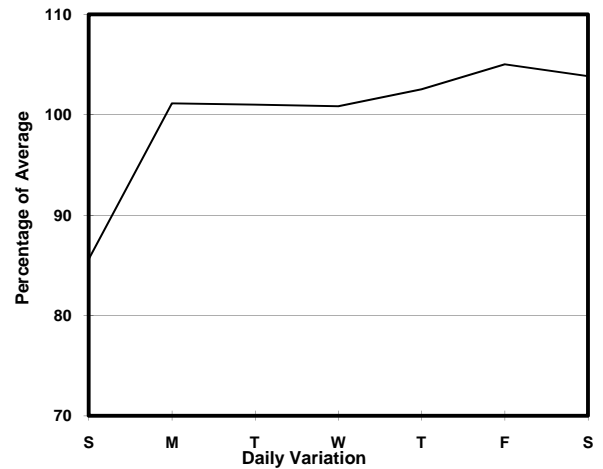
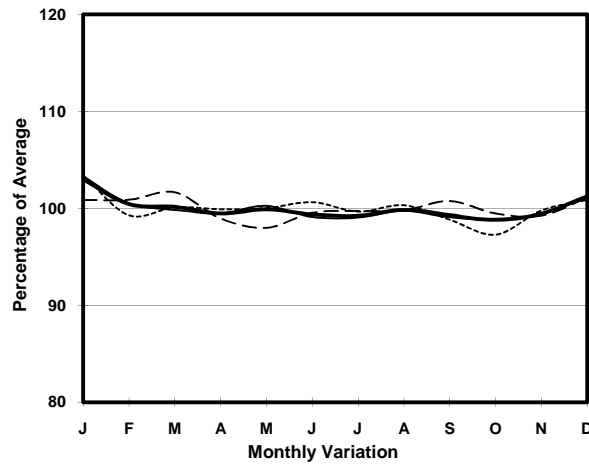
ROAD NETWORK MAJOR

ROAD TYPE PRIMARY DISTRIBUTOR

LINK ARGYLE ST & FO <K13> (from WATERLOO RD to YIM PO FONG ST)



## 1. TRAFFIC FLOW VARIATION AND GROWTH



## 2. TRAFFIC CHARACTERISTICS (BY DIRECTION)

Parameter	All - Day	Mon. - Fri.	Sat.	Sun.
<b>EAST BOUND</b>				
A.A.D.T.	24600	25350	25680	21150
R 12 / 24 - %	59.5	60.5	59	54
R 16 / 24 - %	78.4	79.6	77.3	72.9
AM Peak Hour	0800-0900	0800-0900	0900-1000	0900-1000
One-way flow at AM peak hour	1260	1440	1150	800
T - % (AM)	-	14.1	-	-
PM Peak Hour	1800-1900	1800-1900	1800-1900	1800-1900
One-way flow at PM peak hour	1390	1420	1540	1200
T - % (PM)	-	6.5	-	-
Prop.of commercial vehicles - 16 hr.	-	9.6	-	-
<b>WEST BOUND</b>				
A.A.D.T.	22740	23350	23890	19740
R 12 / 24 - %	63.2	64	61.9	59.5
R 16 / 24 - %	82.3	83.2	81.2	78.4
AM Peak Hour	0800-0900	0800-0900	0900-1000	0900-1000
One-way flow at AM peak hour	1310	1500	1230	790
T - % (AM)	-	8.2	-	-
PM Peak Hour	1800-1900	1800-1900	1800-1900	1800-1900
One-way flow at PM peak hour	1280	1300	1350	1150
T - % (PM)	-	7.8	-	-
Prop.of commercial vehicles - 16 hr.	-	8	-	-

## 3. OTHER INFORMATION AND COMMENT

**4. Vehicle classification and occupancy - Monday to Friday**

Time		Class of vehicle									
		Motor	Private	Taxi	Private	PLB	Goods veh.		Non	Fr. Bus	
		Cycle	Car		LB		Light	M & H	Fr. Bus	SD	DD
0700-0800	Pro	2.2	13.6	36.0	1.5	17.8	13.6	0.5	6.1	0.0	8.8
	Ocp	1.4	1.5	2.2	7.0	8.9	1.4	1.5	10.6	0.0	38.5
0800-0900	Pro	1.9	36.9	24.9	0.6	11.3	13.4	1.3	4.5	0.0	5.2
	Ocp	1.1	1.6	2.2	5.6	10.4	1.8	1.7	19.3	0.0	32.3
0900-1000	Pro	3.2	27.8	28.2	0.4	11.3	21.1	1.4	1.0	0.0	5.7
	Ocp	1.0	1.4	2.0	2.7	8.4	1.7	1.7	7.7	0.0	23.9
1000-1100	Pro	3.5	23.2	30.8	0.3	8.5	23.8	2.6	1.4	0.1	5.9
	Ocp	1.0	1.6	1.8	2.5	7.8	1.7	1.5	8.3	1.0	21.8
1100-1200	Pro	2.2	24.7	28.0	1.1	9.9	26.4	1.3	0.7	0.1	5.7
	Ocp	1.2	1.6	2.0	3.5	7.1	1.6	1.9	1.0	1.0	23.4
1200-1300	Pro	5.2	26.6	21.8	0.7	13.3	20.7	1.8	3.5	0.0	6.3
	Ocp	1.1	1.6	2.0	2.0	8.0	1.6	1.2	11.8	0.0	23.4
1300-1400	Pro	2.8	25.3	28.0	0.6	12.4	21.9	1.7	0.7	0.0	6.7
	Ocp	1.3	1.5	2.1	1.7	9.1	1.6	1.6	10.0	0.0	25.8
1400-1500	Pro	3.7	24.0	27.9	1.1	11.2	22.3	1.4	2.3	0.0	6.3
	Ocp	1.1	1.6	2.1	2.0	8.5	1.7	1.8	1.5	0.0	25.1
1500-1600	Pro	3.1	24.5	33.0	0.7	9.6	21.1	0.9	1.0	0.1	5.9
	Ocp	1.0	1.6	2.1	1.3	11.4	1.6	1.4	11.5	1.0	31.3
1600-1700	Pro	3.7	36.8	24.3	0.7	10.5	15.8	1.5	1.0	0.0	5.9
	Ocp	1.2	1.6	1.8	3.3	11.3	1.6	2.2	3.0	0.0	37.7
1700-1800	Pro	5.2	31.7	24.0	0.7	13.5	14.9	1.6	1.8	0.0	6.7
	Ocp	1.2	1.6	2.1	1.0	13.6	1.5	1.6	5.0	0.0	43.8
1800-1900	Pro	6.3	34.9	23.9	0.0	14.9	12.8	1.0	0.8	0.0	5.4
	Ocp	1.2	1.5	2.1	0.0	14.9	1.9	2.0	20.6	0.0	52.1
1900-2000	Pro	5.2	31.0	34.7	0.2	15.4	7.3	0.3	0.3	0.0	5.6
	Ocp	1.2	1.6	2.1	1.0	15.3	1.8	1.5	2.0	0.0	38.9
2000-2100	Pro	2.7	33.5	36.9	0.4	16.6	3.4	0.2	1.1	0.0	5.4
	Ocp	1.2	1.7	1.9	5.0	13.4	1.9	1.0	1.0	0.0	35.5
2100-2200	Pro	4.6	32.5	34.9	0.7	16.3	4.0	0.0	0.5	0.0	6.4
	Ocp	1.3	1.7	1.9	4.5	14.5	1.9	0.0	10.7	0.0	33.4
2200-2300	Pro	4.1	30.4	34.9	0.2	19.9	3.8	0.2	0.4	0.0	6.1
	Ocp	1.4	1.9	2.2	2.0	12.0	1.7	2.0	1.0	0.0	33.0
16 hours	Pro	3.7	29.1	29.2	0.6	13.1	15.4	1.1	1.7	0.1	6.0
	Ocp	1.2	1.6	2.0	3.3	11.3	1.7	1.7	10.6	1.0	32.5

**Legend**

- Pro.** Proportion of vehicles in % (Sum may not add up to 100% due to figure rounding)
- Ocp.** Average occupancy of vehicles
- M&H** Medium and Heavy