

YEAR 2009

COVERAGE (B) STATION 4206

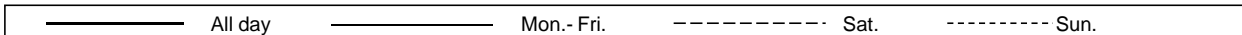
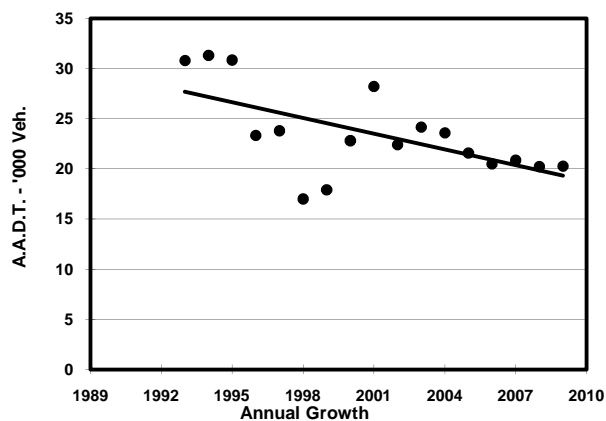
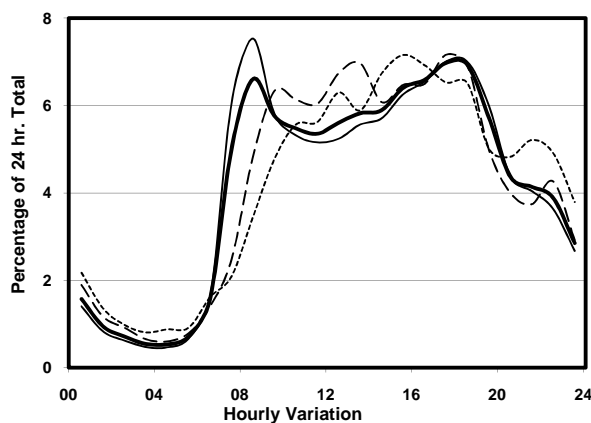
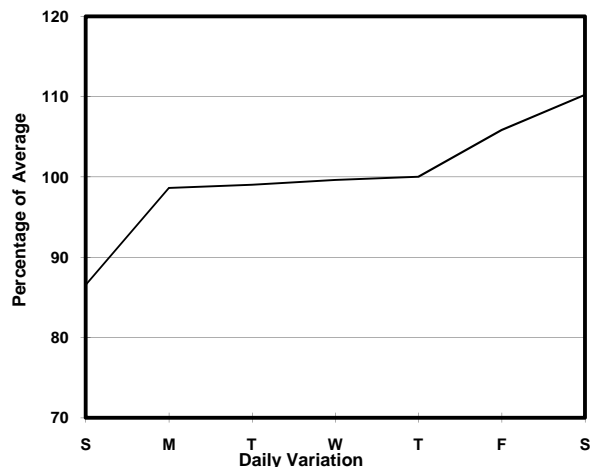
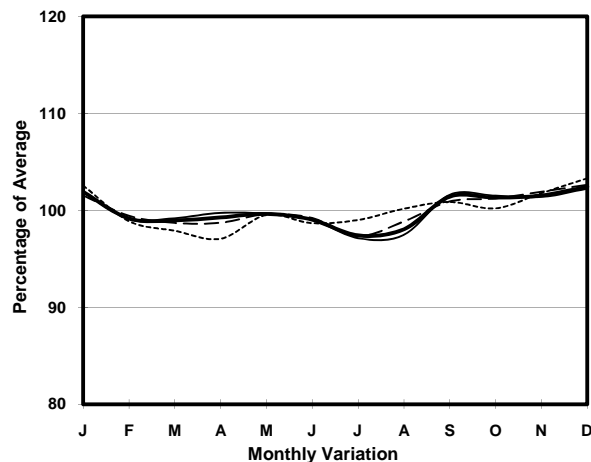
ROAD NETWORK MAJOR

ROAD TYPE DISTRICT DISTRIBUTOR

LINK CORNWALL ST (from WATERLOO RD to NAM CHEONG ST)



1. TRAFFIC FLOW VARIATION AND GROWTH



2. TRAFFIC CHARACTERISTICS (BY DIRECTION)

Parameter	All - Day	Mon. - Fri.	Sat.	Sun.
EAST BOUND				
A.A.D.T.	9970	10160	10780	8780
R 12 / 24 - %	72.7	73.4	72.1	69.1
R 16 / 24 - %	90	90.8	88	87.6
AM Peak Hour	0800-0900	0800-0900	0900-1000	0900-1000
One-way flow at AM peak hour	750	850	730	480
T - % (AM)	-	15.2	-	-
PM Peak Hour	1800-1900	1800-1900	1700-1800	1800-1900
One-way flow at PM peak hour	710	740	710	620
T - % (PM)	-	7.9	-	-
Prop.of commercial vehicles - 16 hr.	-	10.9	-	-
WEST BOUND				
A.A.D.T.	10290	10390	11730	8910
R 12 / 24 - %	72.2	73	73.1	66
R 16 / 24 - %	91	91.7	91.1	87.4
AM Peak Hour	0800-0900	0800-0900	0900-1000	0900-1000
One-way flow at AM peak hour	590	700	700	370
T - % (AM)	-	9.9	-	-
PM Peak Hour	1700-1800	1700-1800	1800-1900	1600-1700
One-way flow at PM peak hour	770	780	910	650
T - % (PM)	-	11.3	-	-
Prop.of commercial vehicles - 16 hr.	-	9.9	-	-

3. OTHER INFORMATION AND COMMENT

4. Vehicle classification and occupancy - Monday to Friday

Time		Class of vehicle									
		Motor	Private	Taxi	Private	PLB	Goods veh.		Non	Fr. Bus	
		Cycle	Car		LB		Light	M & H	Fr. Bus	SD	DD
0700-0800	Pro	4.5	40.6	24.3	2.5	0.0	6.9	1.0	15.8	0.4	4.1
	Ocp	1.1	1.7	2.1	8.6	0.0	1.8	2.0	12.9	3.0	45.7
0800-0900 Peak hour	Pro	4.1	57.5	16.1	1.8	0.0	7.8	1.2	9.2	0.1	2.2
	Ocp	1.2	1.6	1.9	9.1	0.0	1.7	1.4	17.2	3.0	47.3
0900-1000	Pro	2.3	52.5	15.5	0.6	0.0	20.5	2.3	3.2	0.0	3.0
	Ocp	1.0	1.5	1.7	3.0	0.0	1.8	1.4	7.5	0.0	26.6
1000-1100	Pro	1.5	47.6	16.5	1.5	0.0	24.6	1.2	3.8	0.0	3.3
	Ocp	1.3	1.4	1.6	2.0	0.0	1.6	1.7	8.4	0.0	22.2
1100-1200	Pro	4.0	51.3	15.9	1.6	0.4	17.5	3.2	3.2	0.0	2.9
	Ocp	1.0	1.5	1.9	1.0	1.0	1.8	1.6	7.9	0.0	21.6
1200-1300	Pro	3.2	46.1	16.8	1.8	0.4	18.9	3.9	6.1	0.1	2.7
	Ocp	1.1	1.5	1.9	10.2	1.0	1.8	1.4	13.9	1.0	25.7
1300-1400	Pro	2.4	52.4	17.6	1.4	0.0	15.2	1.4	7.1	0.0	2.7
	Ocp	1.1	1.6	1.9	4.8	0.0	1.8	1.3	11.3	0.0	33.3
1400-1500	Pro	4.3	47.1	16.1	2.7	0.4	19.6	2.0	4.7	0.0	3.0
	Ocp	1.0	1.7	1.6	2.0	1.0	1.6	2.2	14.5	0.0	30.3
1500-1600	Pro	1.6	52.8	18.5	2.6	0.0	13.3	1.6	7.1	0.0	2.5
	Ocp	1.0	1.6	1.9	6.6	0.0	1.5	1.2	17.8	0.0	26.1
1600-1700	Pro	3.0	43.7	21.9	3.0	0.0	16.5	2.0	7.1	0.0	2.8
	Ocp	1.1	1.5	1.9	4.0	0.0	1.4	1.7	5.0	0.0	30.5
1700-1800	Pro	5.4	52.1	16.1	3.0	0.0	11.3	2.4	7.1	0.0	2.7
	Ocp	1.1	1.6	1.8	10.7	0.0	1.7	1.8	11.5	0.0	38.7
1800-1900	Pro	6.9	59.3	15.7	0.5	0.3	8.5	0.8	5.3	0.0	2.6
	Ocp	1.2	1.7	1.8	2.0	1.0	1.7	1.3	10.6	0.0	51.5
1900-2000	Pro	5.8	54.2	22.8	0.4	0.4	7.4	0.8	4.6	0.0	3.6
	Ocp	1.1	1.6	1.8	1.0	1.0	1.8	1.0	9.5	0.0	40.9
2000-2100	Pro	1.3	61.7	23.7	0.0	0.9	6.7	0.0	2.2	0.0	3.5
	Ocp	1.3	1.5	1.8	0.0	1.0	1.6	0.0	6.2	0.0	26.2
2100-2200	Pro	6.6	61.4	19.3	1.2	0.0	5.4	0.0	1.8	0.0	4.2
	Ocp	1.0	1.6	2.0	1.5	0.0	1.7	0.0	4.3	0.0	26.8
2200-2300	Pro	6.2	51.5	31.1	0.6	0.0	4.5	0.0	1.1	0.1	4.8
	Ocp	1.1	1.6	1.7	2.0	0.0	1.6	0.0	13.0	1.0	24.4
16 hours	Pro	3.9	52.2	18.6	1.6	0.2	13.1	1.6	5.8	0.1	3.0
	Ocp	1.1	1.6	1.8	5.9	1.0	1.7	1.5	12.1	2.3	32.9

Legend

- Pro.** Proportion of vehicles in % (Sum may not add up to 100% due to figure rounding)
- Ocp.** Average occupancy of vehicles
- M&H** Medium and Heavy