

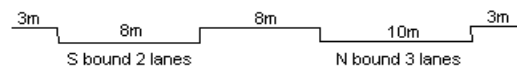
YEAR 2009

COVERAGE (B) STATION 4212

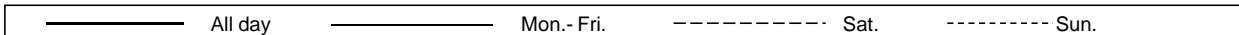
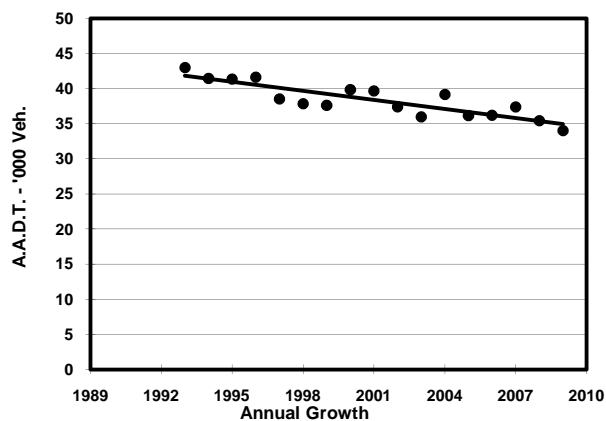
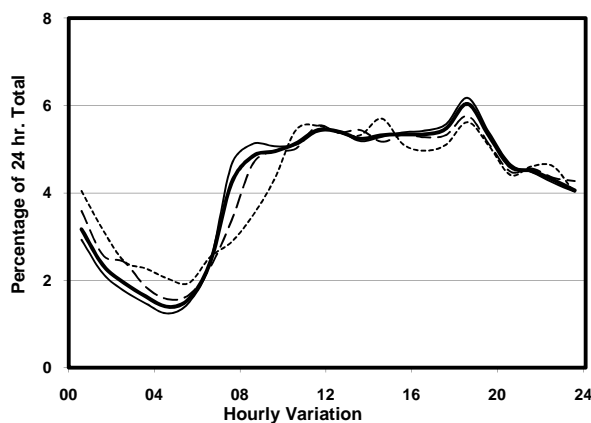
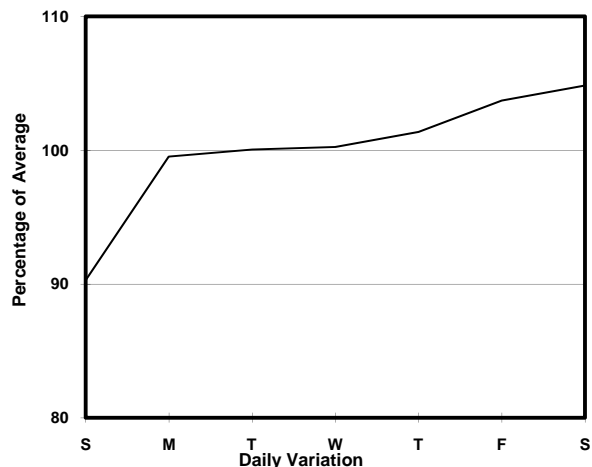
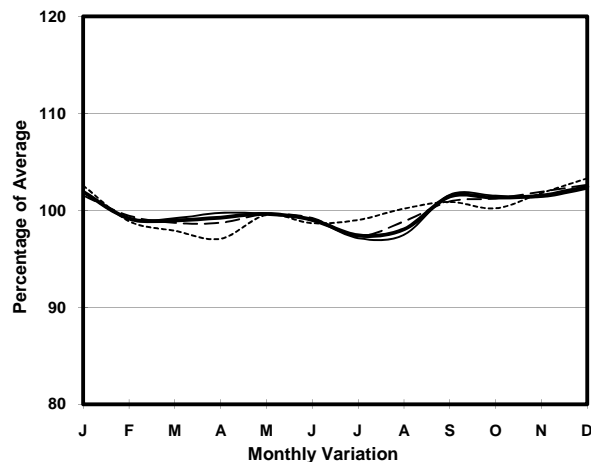
ROAD NETWORK MAJOR

ROAD TYPE PRIMARY DISTRIBUTOR

LINK CHATHAM RD N & MA TAU WAI RD (from SAN LAU ST to CHI KIANG ST)



1. TRAFFIC FLOW VARIATION AND GROWTH



2. TRAFFIC CHARACTERISTICS (BY DIRECTION)

Parameter	All - Day	Mon. - Fri.	Sat.	Sun.
SOUTH BOUND				
A.A.D.T.	13960	13670	15540	14330
R 12 / 24 - %	60.2	60.8	58.5	58.8
R 16 / 24 - %	79.4	80.5	77.7	76.3
AM Peak Hour	0800-0900	0700-0800	0800-0900	0900-1000
One-way flow at AM peak hour	670	730	750	670
T - % (AM)	-	20.4	-	-
PM Peak Hour	1800-1900	1800-1900	1800-1900	1800-1900
One-way flow at PM peak hour	800	790	900	810
T - % (PM)	-	13.9	-	-
Prop.of commercial vehicles - 16 hr.	-	15.7	-	-
NORTH BOUND				
A.A.D.T.	20030	20840	20290	16530
R 12 / 24 - %	64.6	65.7	63.4	59
R 16 / 24 - %	82.9	83.9	81.3	78.8
AM Peak Hour	0900-1000	0900-1000	0900-1000	0900-1000
One-way flow at AM peak hour	1040	1120	1030	660
T - % (AM)	-	16.7	-	-
PM Peak Hour	1800-1900	1800-1900	1800-1900	1800-1900
One-way flow at PM peak hour	1250	1350	1170	920
T - % (PM)	-	14.1	-	-
Prop.of commercial vehicles - 16 hr.	-	16.3	-	-

3. OTHER INFORMATION AND COMMENT

4. Vehicle classification and occupancy - Monday to Friday

Time		Class of vehicle									
		Motor	Private	Taxi	Private	PLB	Goods veh.		Non	Fr. Bus	
		Cycle	Car		LB		Light	M & H	Fr. Bus	SD	DD
0700-0800	Pro	6.1	8.8	33.6	3.0	13.5	12.7	3.3	4.4	0.0	14.7
	Ocp	1.2	1.5	1.8	5.9	11.1	1.7	1.4	12.6	0.0	37.0
0800-0900	Pro	5.7	29.7	22.9	0.2	14.1	11.5	1.2	1.4	0.0	13.3
	Ocp	1.1	1.5	1.8	1.0	10.5	1.4	1.3	26.0	0.0	46.1
0900-1000	Pro	5.9	19.2	27.1	2.4	10.0	19.0	1.4	2.2	0.0	12.8
	Ocp	1.1	1.4	1.4	1.7	8.1	1.7	1.3	26.7	0.0	23.1
1000-1100	Pro	4.5	22.9	24.6	1.5	5.1	22.4	4.5	2.8	0.0	11.7
	Ocp	1.1	1.4	1.8	2.7	7.0	1.6	1.8	8.1	0.0	21.0
1100-1200	Pro	4.2	20.8	24.3	1.5	6.6	28.1	2.9	1.8	0.0	9.9
	Ocp	1.0	1.4	1.6	3.0	5.4	1.5	1.5	7.1	0.0	22.3
1200-1300	Pro	3.3	25.5	26.6	0.9	4.4	23.6	1.5	4.1	0.0	10.1
	Ocp	1.0	1.6	1.7	3.0	9.1	1.6	1.9	16.0	0.0	22.0
1300-1400	Pro	7.5	21.7	23.9	1.3	4.9	23.6	4.2	2.0	0.0	10.9
	Ocp	1.0	1.3	1.9	5.2	6.9	1.6	1.7	20.7	0.0	21.6
1400-1500	Pro	4.5	28.8	18.8	0.9	3.6	28.4	2.5	1.8	0.0	10.9
	Ocp	1.1	1.6	2.0	2.8	9.8	1.6	1.7	12.6	0.0	24.7
1500-1600	Pro	3.0	26.4	20.2	1.5	4.1	26.0	3.4	2.1	0.0	13.3
	Ocp	1.0	1.4	1.8	3.1	8.2	1.5	1.9	18.3	0.0	24.6
1600-1700	Pro	3.8	31.0	20.1	1.0	5.2	22.0	1.7	2.9	0.0	12.1
	Ocp	1.1	1.4	1.8	2.6	9.8	1.6	1.5	5.4	0.0	30.3
1700-1800	Pro	3.9	31.2	17.2	0.4	7.5	23.7	1.4	2.2	0.0	12.4
	Ocp	1.0	1.4	1.7	5.5	10.3	1.6	1.3	16.0	0.0	38.3
1800-1900 Peak hour	Pro	4.5	30.7	23.3	0.6	13.2	13.8	0.9	1.7	0.0	11.4
	Ocp	1.0	1.5	2.0	1.7	11.6	1.5	2.0	18.3	0.0	51.4
1900-2000	Pro	4.0	36.9	27.1	1.4	9.2	8.0	1.0	0.6	0.0	11.9
	Ocp	1.0	1.5	1.9	3.3	11.9	1.7	1.2	7.3	0.0	46.5
2000-2100	Pro	4.1	33.3	33.0	0.5	9.9	5.5	0.2	0.7	0.1	12.7
	Ocp	1.1	1.5	1.7	1.0	8.9	1.8	1.0	8.3	3.0	30.8
2100-2200	Pro	3.4	29.1	33.6	0.5	11.4	5.8	0.5	2.1	0.0	13.5
	Ocp	1.3	1.6	1.8	1.0	8.8	1.7	1.0	1.6	0.0	32.4
2200-2300	Pro	2.8	30.5	36.9	0.0	12.6	3.4	0.6	0.3	0.0	12.9
	Ocp	1.5	1.5	1.9	0.0	8.9	2.2	1.0	1.0	0.0	30.7
16 hours	Pro	4.5	26.9	25.4	1.1	8.4	17.7	2.0	2.1	0.1	12.1
	Ocp	1.1	1.5	1.8	3.2	9.5	1.6	1.6	13.9	3.0	32.0

Legend

Pro. Proportion of vehicles in % (Sum may not add up to 100% due to figure rounding)
Ocp. Average occupancy of vehicles
M&H Medium and Heavy