

YEAR 2009

COVERAGE (B) STATION 4213

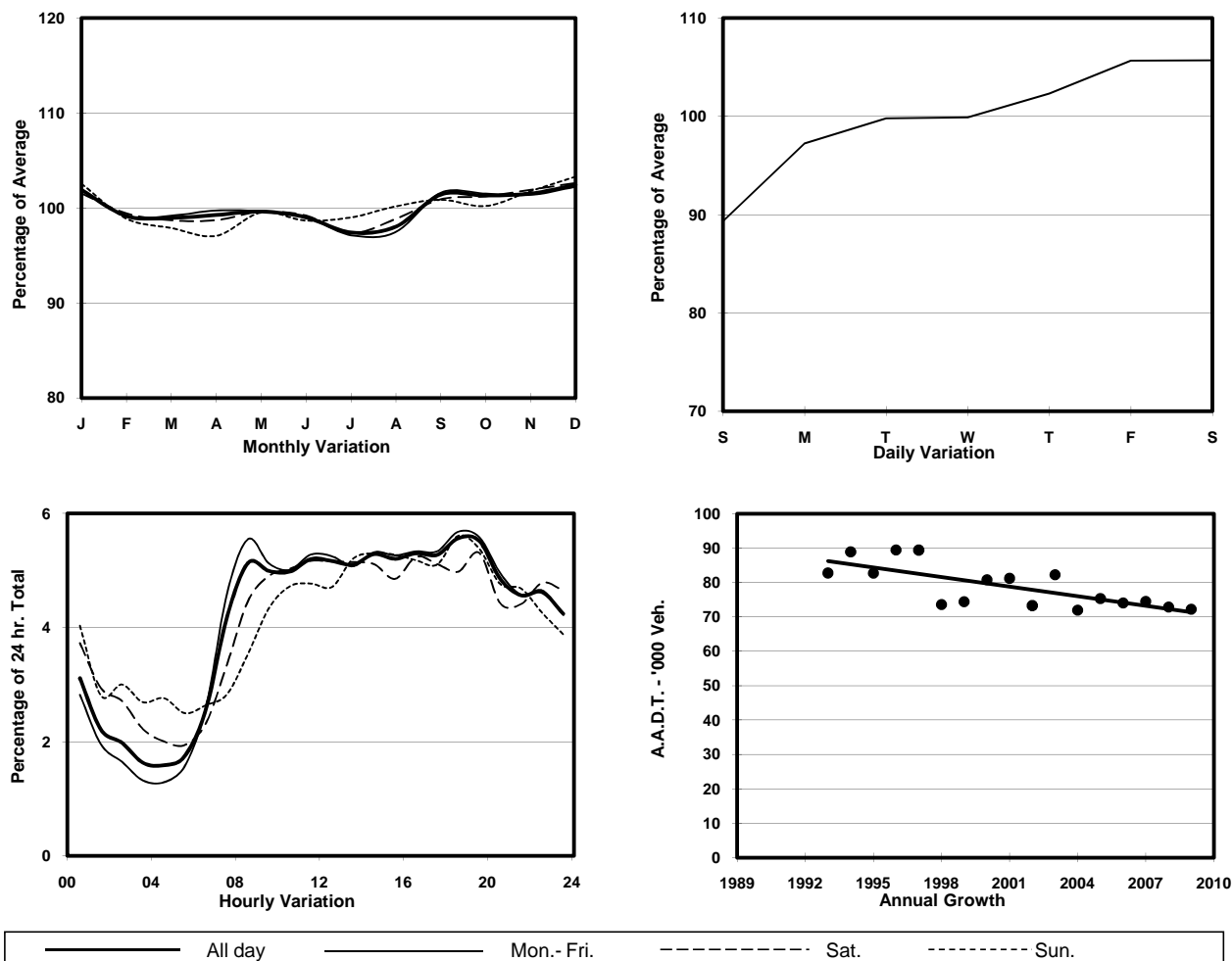
ROAD NETWORK MAJOR

ROAD TYPE URBAN TRUNK ROAD

LINK EAST KOWLOON CORRIDOR <FO> (from MA TAU KOK RD to CHATHAM RD N)



## 1. TRAFFIC FLOW VARIATION AND GROWTH



## 2. TRAFFIC CHARACTERISTICS (BY DIRECTION)

Parameter	All - Day	Mon. - Fri.	Sat.	Sun.
<b>SOUTH BOUND</b>				
A.A.D.T.	27380	27540	29000	26130
R 12 / 24 - %	60.9	62	57.8	58.2
R 16 / 24 - %	79.8	81.2	76.4	76
AM Peak Hour	0800-0900	0800-0900	0900-1000	0900-1000
One-way flow at AM peak hour	1580	1710	1600	1240
T - % (AM)	-	10.3	-	-
PM Peak Hour	1800-1900	1800-1900	1600-1700	1800-1900
One-way flow at PM peak hour	1390	1420	1290	1500
T - % (PM)	-	6.2	-	-
Prop.of commercial vehicles - 16 hr.	-	12.7	-	-
<b>NORTH BOUND</b>				
A.A.D.T.	44790	45780	47760	38770
R 12 / 24 - %	61.7	63.3	59	55.5
R 16 / 24 - %	81.6	83.4	78.1	75.5
AM Peak Hour	0900-1000	0800-0900	0900-1000	0900-1000
One-way flow at AM peak hour	2170	2350	2160	1580
T - % (AM)	-	12.3	-	-
PM Peak Hour	1600-1700	1600-1700	1600-1700	1800-1900
One-way flow at PM peak hour	2640	2760	2740	2140
T - % (PM)	-	12.1	-	-
Prop.of commercial vehicles - 16 hr.	-	10.1	-	-

## 3. OTHER INFORMATION AND COMMENT

**4. Vehicle classification and occupancy - Monday to Friday**

Time		Class of vehicle									
		Motor	Private	Taxi	Private	PLB	Goods veh.		Non	Fr. Bus	
		Cycle	Car		LB		Light	M & H	Fr. Bus	SD	DD
0700-0800	Pro	8.8	18.5	29.5	1.1	0.0	21.5	9.4	7.2	0.0	4.0
	Ocp	1.1	1.4	2.0	5.5	0.0	1.4	1.2	3.3	0.0	20.7
0800-0900	Pro	7.7	38.8	27.0	1.2	0.0	13.9	5.1	3.5	0.0	2.8
	Ocp	1.1	1.3	2.1	1.4	0.0	1.6	1.2	2.7	0.0	43.0
0900-1000	Pro	5.3	30.7	27.3	0.9	0.0	21.2	8.6	2.7	0.1	3.3
	Ocp	1.1	1.3	2.1	2.7	0.0	1.3	1.3	3.1	1.0	24.6
1000-1100	Pro	3.5	28.0	24.1	0.9	0.0	29.4	8.5	2.8	0.0	2.8
	Ocp	1.0	1.3	1.6	1.5	0.0	1.3	1.2	6.8	0.0	17.0
1100-1200	Pro	3.8	26.4	21.7	1.1	0.0	34.2	8.3	2.4	0.0	2.0
	Ocp	1.0	1.3	1.6	1.3	0.0	1.3	1.4	4.3	0.0	19.0
1200-1300	Pro	4.2	30.4	24.7	1.6	0.0	27.7	6.3	3.4	0.0	1.7
	Ocp	1.0	1.3	1.9	3.8	0.0	1.5	1.4	9.3	0.0	21.6
1300-1400	Pro	3.6	26.5	21.5	1.2	0.0	36.0	7.7	2.0	0.0	1.6
	Ocp	1.1	1.3	2.0	3.5	0.0	1.5	1.2	5.4	0.0	24.5
1400-1500	Pro	3.8	31.7	22.2	0.4	0.0	30.3	7.6	2.5	0.0	1.7
	Ocp	1.1	1.5	2.2	1.3	0.0	1.2	1.2	5.9	0.0	24.8
1500-1600	Pro	4.6	33.5	22.2	1.5	0.1	28.7	5.1	2.4	0.0	1.8
	Ocp	1.0	1.3	2.1	3.2	1.0	1.3	1.3	10.7	0.0	22.3
1600-1700	Pro	4.2	33.4	23.4	1.5	0.0	23.7	8.3	3.3	0.1	2.3
	Ocp	1.0	1.2	1.8	1.7	0.0	1.3	1.2	7.6	1.0	23.2
1700-1800	Pro	5.9	32.6	27.9	0.7	0.0	20.8	6.2	3.2	0.0	2.8
	Ocp	1.1	1.4	1.9	1.7	0.0	1.3	1.4	4.6	0.0	33.6
1800-1900 Peak hour	Pro	9.4	43.8	24.7	0.4	0.0	14.7	2.8	1.8	0.0	2.5
	Ocp	1.2	1.3	2.2	1.0	0.0	1.2	1.3	3.7	0.0	50.3
1900-2000	Pro	5.4	45.7	30.4	0.1	0.1	11.5	2.3	2.1	0.0	2.4
	Ocp	1.1	1.4	2.2	1.0	17.0	1.2	1.2	9.4	0.0	37.4
2000-2100	Pro	5.4	40.9	36.8	0.3	0.0	8.4	2.0	3.7	0.0	2.5
	Ocp	1.1	1.3	2.1	2.0	0.0	1.5	1.3	5.6	0.0	25.3
2100-2200	Pro	4.0	39.5	38.4	0.6	0.1	9.8	1.8	3.5	0.0	2.4
	Ocp	1.1	1.5	2.3	2.4	1.0	1.4	1.4	3.2	0.0	21.1
2200-2300	Pro	5.9	42.8	37.8	0.4	0.4	6.5	2.5	1.7	0.0	1.9
	Ocp	1.3	1.5	2.1	1.3	1.0	1.3	1.1	1.7	0.0	37.6
16 hours	Pro	5.4	34.3	27.3	0.9	0.1	21.0	5.7	3.0	0.1	2.4
	Ocp	1.1	1.4	2.0	2.5	3.3	1.3	1.3	5.4	1.0	28.5

**Legend**

- Pro.** Proportion of vehicles in % (Sum may not add up to 100% due to figure rounding)
- Ocp.** Average occupancy of vehicles
- M&H** Medium and Heavy