

YEAR 2009

COVER AGE (B) STATION 4217

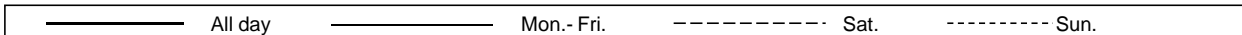
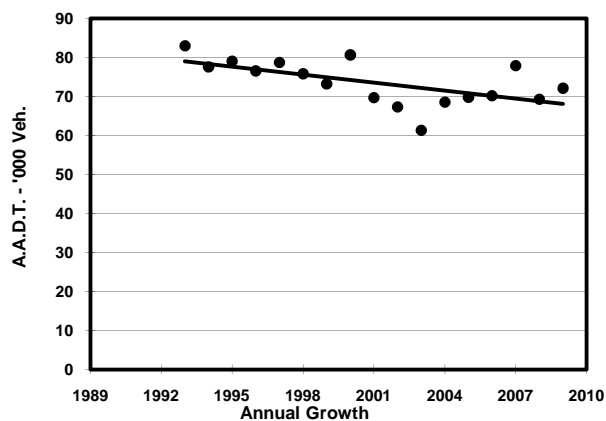
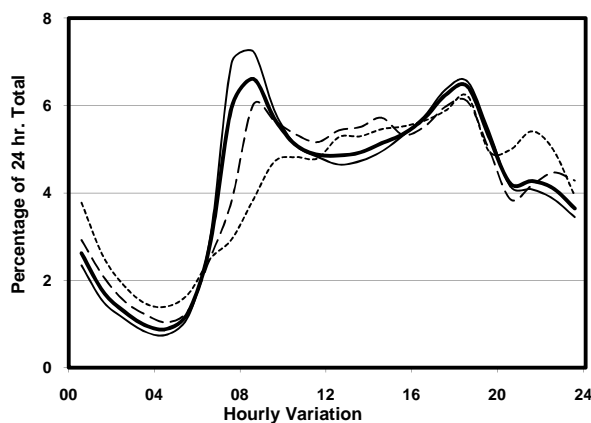
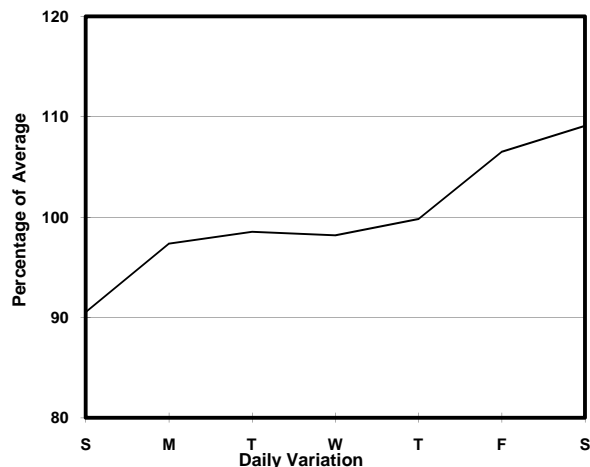
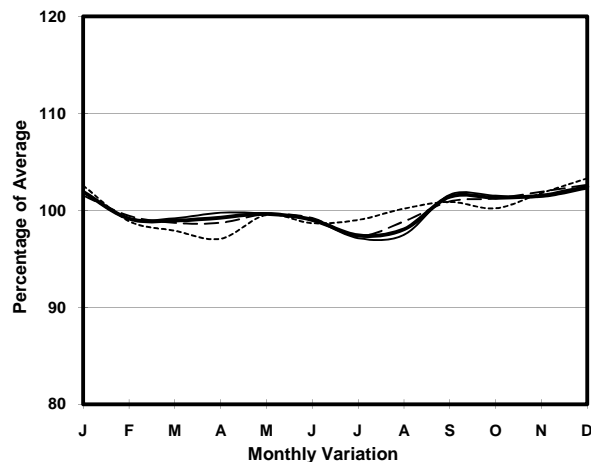
ROAD NETWORK MAJOR

ROAD TYPE PRIMARY DISTRIBUTOR

LINK CLEAR WATER BAY RD (from LUNG CHEUNG RD to NEW CLEAR WATER BAY RD WESTERN JUNCTION)



1. TRAFFIC FLOW VARIATION AND GROWTH



2. TRAFFIC CHARACTERISTICS (BY DIRECTION)

Parameter	All - Day	Mon. - Fri.	Sat.	Sun.
EAST BOUND				
A.A.D.T.	38480	38390	42760	36150
R 12 / 24 - %	64.1	65.5	63.3	58.2
R 16 / 24 - %	84.1	85.3	82.4	79.8
AM Peak Hour	0800-0900	0800-0900	0800-0900	0900-1000
One-way flow at AM peak hour	2220	2410	2280	1540
T - % (AM)	-	13.3	-	-
PM Peak Hour	1800-1900	1800-1900	1800-1900	1800-1900
One-way flow at PM peak hour	2630	2720	2710	2200
T - % (PM)	-	4.9	-	-
Prop.of commercial vehicles - 16 hr.	-	12.4	-	-
WEST BOUND				
A.A.D.T.	33600	34130	36350	29510
R 12 / 24 - %	70	71.6	68.3	63.2
R 16 / 24 - %	85.5	86.4	83.8	82
AM Peak Hour	0800-0900	0700-0800	0800-0900	0900-1000
One-way flow at AM peak hour	2550	2850	2470	1560
T - % (AM)	-	14.5	-	-
PM Peak Hour	1700-1800	1700-1800	1700-1800	1800-1900
One-way flow at PM peak hour	2120	2190	2210	1880
T - % (PM)	-	12.6	-	-
Prop.of commercial vehicles - 16 hr.	-	12.7	-	-

3. OTHER INFORMATION AND COMMENT

4. Vehicle classification and occupancy - Monday to Friday

Time		Class of vehicle									
		Motor	Private	Taxi	Private	PLB	Goods veh.		Non	Fr. Bus	
		Cycle	Car		LB		Light	M & H	Fr. Bus	SD	DD
0700-0800	Pro	4.2	26.3	20.9	5.6	14.7	13.3	4.5	6.6	0.1	3.9
	Ocp	1.1	1.5	2.1	7.2	12.6	1.6	1.3	15.2	11.5	43.0
0800-0900	Pro	3.6	47.0	13.1	1.6	11.0	11.0	5.8	4.2	0.1	2.8
	Ocp	1.1	1.5	1.8	3.1	13.5	1.7	1.2	9.1	12.0	37.4
0900-1000	Pro	3.9	43.2	16.8	1.1	7.3	14.9	6.8	2.5	0.1	3.5
	Ocp	1.1	1.4	1.9	2.8	13.9	1.7	1.2	19.1	11.0	17.5
1000-1100	Pro	2.4	30.2	20.1	1.4	8.2	20.5	11.9	1.4	0.1	3.9
	Ocp	1.1	1.5	1.8	3.4	12.4	1.7	1.3	1.9	13.5	20.8
1100-1200	Pro	3.5	30.4	18.8	2.1	10.0	18.8	10.6	2.0	0.1	3.8
	Ocp	1.1	1.5	1.9	2.6	10.2	1.8	1.3	3.6	14.0	18.3
1200-1300	Pro	2.8	33.2	18.6	2.5	10.3	17.3	10.3	1.4	0.1	3.7
	Ocp	1.1	1.5	2.0	5.2	9.2	1.7	1.2	10.5	12.5	20.0
1300-1400	Pro	4.0	27.2	17.8	1.8	9.5	20.8	11.6	3.3	0.1	3.8
	Ocp	1.1	1.6	2.0	2.3	10.8	1.6	1.2	18.9	12.0	21.9
1400-1500	Pro	3.4	36.3	16.4	1.3	8.6	18.6	9.5	1.9	0.1	3.9
	Ocp	1.1	1.6	1.8	3.9	10.0	1.6	1.4	13.9	10.0	17.6
1500-1600	Pro	2.8	31.6	17.8	3.4	7.7	18.1	10.3	4.6	0.1	3.6
	Ocp	1.1	1.6	1.8	6.9	11.1	1.6	1.2	25.3	13.0	22.1
1600-1700	Pro	4.1	32.2	20.5	3.0	10.2	15.7	6.3	4.0	0.1	4.0
	Ocp	1.2	1.5	1.8	4.3	12.4	1.8	1.3	5.7	11.5	25.5
1700-1800	Pro	5.2	36.7	17.1	2.3	11.9	13.5	4.9	4.4	0.1	4.1
	Ocp	1.2	1.7	2.0	3.8	12.2	1.8	1.2	7.7	8.0	30.0
1800-1900	Pro	4.1	54.2	15.3	0.7	11.0	9.0	2.0	0.7	0.1	3.1
	Ocp	1.2	1.6	1.9	3.1	13.2	1.6	1.4	15.4	24.0	35.4
1900-2000	Pro	5.0	48.7	18.5	0.5	14.4	7.3	2.0	0.4	0.1	3.2
	Ocp	1.1	1.5	2.0	1.2	11.1	1.3	1.3	9.5	14.3	24.9
2000-2100	Pro	4.1	50.6	18.7	0.4	14.9	5.8	1.3	0.3	0.1	3.8
	Ocp	1.2	1.5	2.0	2.3	10.3	1.5	1.5	2.0	9.3	19.4
2100-2200	Pro	4.6	40.8	27.7	0.3	13.7	6.1	1.9	0.3	0.1	4.5
	Ocp	1.1	1.7	1.9	6.0	8.3	1.5	1.3	1.0	18.5	15.7
2200-2300	Pro	4.6	43.2	29.1	0.3	12.7	4.8	0.6	0.4	0.1	4.3
	Ocp	1.1	1.8	1.9	6.0	8.3	1.4	1.3	1.3	6.5	16.6
16 hours	Pro	3.9	38.7	18.7	1.8	10.9	13.5	6.2	2.6	0.1	3.7
	Ocp	1.1	1.6	1.9	4.7	11.4	1.7	1.3	12.7	12.1	24.7

Legend

- Pro.** Proportion of vehicles in % (Sum may not add up to 100% due to figure rounding)
- Ocp.** Average occupancy of vehicles
- M&H** Medium and Heavy