

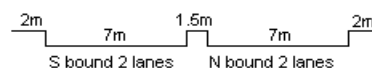
YEAR 2009

COVERAGE (B) STATION 4218

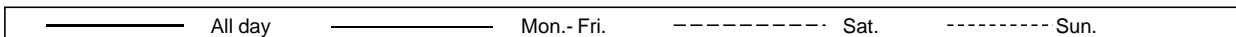
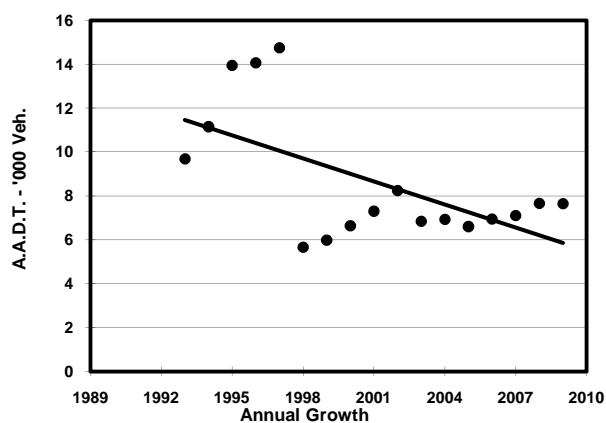
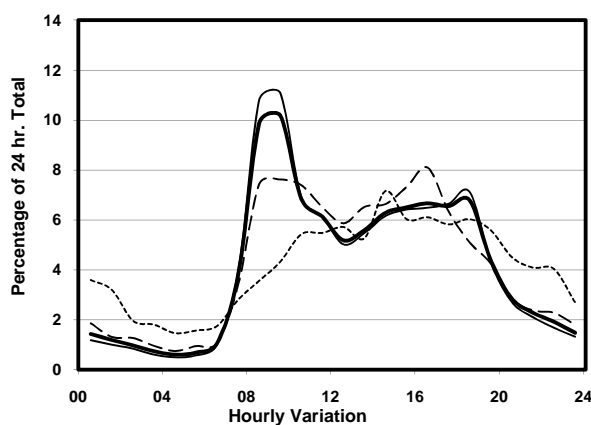
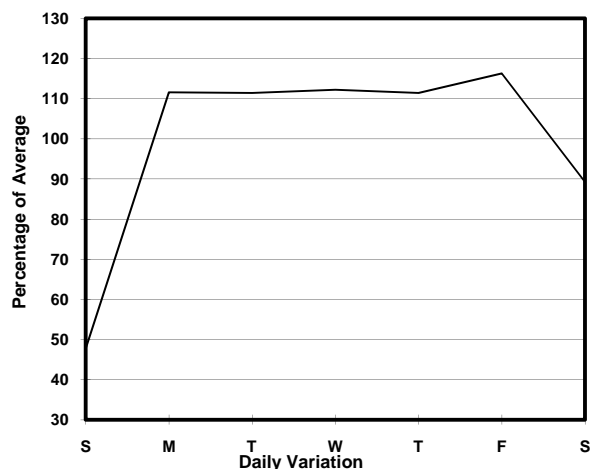
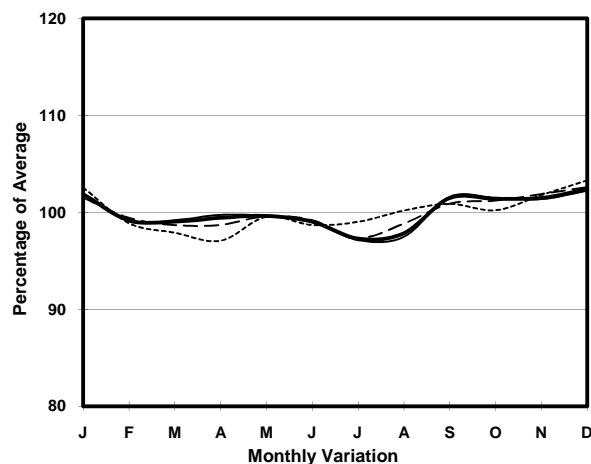
ROAD NETWORK MAJOR

ROAD TYPE DISTRICT DISTRIBUTOR

LINK EASTERN RD & KAI SHING ST (from CONCORDE RD to KAI CHEUNG RD)



## 1. TRAFFIC FLOW VARIATION AND GROWTH



## 2. TRAFFIC CHARACTERISTICS (BY DIRECTION)

Parameter	All - Day	Mon. - Fri.	Sat.	Sun.
<b>SOUTH BOUND</b>				
A.A.D.T.	4610	5400	3950	2240
R 12 / 24 - %	79.9	81.8	77.3	62.2
R 16 / 24 - %	91.4	92.6	89	81.4
AM Peak Hour	0900-1000	0900-1000	0900-1000	0900-1000
One-way flow at AM peak hour	570	730	360	100
T - % (AM)	-	14.9	-	-
PM Peak Hour	1600-1700	1600-1700	1600-1700	1800-1900
One-way flow at PM peak hour	300	360	240	130
T - % (PM)	-	21.7	-	-
Prop.of commercial vehicles - 16 hr.	-	12	-	-
<b>NORTH BOUND</b>				
A.A.D.T.	3030	3440	3060	1510
R 12 / 24 - %	81	82.6	79.4	66
R 16 / 24 - %	92.4	93.4	91.3	82.8
AM Peak Hour	0800-0900	0800-0900	0800-0900	0900-1000
One-way flow at AM peak hour	230	280	220	70
T - % (AM)	-	7.2	-	-
PM Peak Hour	1800-1900	1800-1900	1600-1700	1600-1700
One-way flow at PM peak hour	290	370	330	110
T - % (PM)	-	1.6	-	-
Prop.of commercial vehicles - 16 hr.	-	14.6	-	-

## 3. OTHER INFORMATION AND COMMENT

**4. Vehicle classification and occupancy - Monday to Friday**

Time		Class of vehicle									
		Motor	Private	Taxi	Private	PLB	Goods veh.		Non	Fr. Bus	
		Cycle	Car		LB		Light	M & H	Fr. Bus	SD	DD
0700-0800	Pro	1.1	12.9	44.1	7.5	0.0	22.6	5.4	5.4	0.0	1.1
	Ocp	1.0	1.3	1.7	6.7	0.0	1.3	1.0	23.0	0.0	16.3
0800-0900	Pro	3.6	27.5	40.6	0.0	0.9	20.7	3.2	3.2	0.1	0.2
	Ocp	1.1	1.3	2.0	0.0	17.0	1.9	1.4	42.4	45.0	57.5
0900-1000 Peak hour	Pro	1.5	39.3	25.3	2.3	0.0	19.6	9.8	1.9	0.1	0.2
	Ocp	1.0	1.2	1.7	3.3	0.0	1.7	1.2	13.2	12.0	12.5
1000-1100	Pro	3.2	32.9	23.2	1.3	0.6	20.0	17.4	0.6	0.2	0.5
	Ocp	1.0	1.5	1.8	1.5	1.0	1.5	1.0	1.0	6.0	12.0
1100-1200	Pro	0.8	29.7	19.0	1.7	0.0	23.9	21.4	3.3	0.0	0.2
	Ocp	2.0	1.3	1.4	2.0	0.0	1.7	1.1	1.0	0.0	5.0
1200-1300	Pro	3.6	38.7	22.5	3.6	0.0	12.6	16.2	2.7	0.0	0.0
	Ocp	1.5	1.6	1.4	2.5	0.0	1.6	1.1	1.3	0.0	0.0
1300-1400	Pro	0.8	24.6	22.1	3.3	0.0	23.0	23.8	2.5	0.0	0.0
	Ocp	1.0	1.7	1.6	2.0	0.0	1.4	1.1	1.0	0.0	0.0
1400-1500	Pro	0.0	30.3	15.1	4.2	0.0	25.2	23.5	1.7	0.0	0.0
	Ocp	0.0	1.7	1.3	3.4	0.0	1.4	1.0	1.0	0.0	0.0
1500-1600	Pro	0.7	26.1	22.5	3.6	0.0	23.2	22.5	1.5	0.0	0.0
	Ocp	1.0	1.4	1.3	6.0	0.0	1.6	1.1	9.5	0.0	0.0
1600-1700	Pro	3.2	32.2	18.7	0.6	0.0	27.1	15.5	2.6	0.0	0.2
	Ocp	1.0	1.4	1.4	2.0	0.0	1.6	1.0	1.5	0.0	33.0
1700-1800	Pro	4.2	34.3	28.0	2.1	2.8	23.8	2.1	2.1	0.2	0.4
	Ocp	1.0	1.4	1.3	2.0	10.0	1.8	1.3	1.7	6.0	14.5
1800-1900	Pro	3.0	40.5	34.0	1.0	1.5	17.0	1.5	1.0	0.1	0.4
	Ocp	1.0	1.7	1.9	1.0	17.0	1.6	1.3	21.5	12.0	17.3
1900-2000	Pro	3.5	58.1	28.4	1.4	0.7	5.5	1.4	0.7	0.2	0.2
	Ocp	1.0	1.5	1.8	2.0	17.0	1.8	1.0	1.0	4.0	19.0
2000-2100	Pro	6.3	37.6	47.1	1.6	0.0	6.3	0.0	0.0	0.4	0.8
	Ocp	1.0	1.7	1.6	1.0	0.0	1.5	0.0	0.0	6.0	8.5
2100-2200	Pro	8.2	18.4	55.1	2.0	2.0	12.2	0.0	2.0	0.0	0.0
	Ocp	1.5	1.6	1.6	3.0	1.0	1.3	0.0	2.0	0.0	0.0
2200-2300	Pro	2.7	35.1	54.1	2.7	0.0	2.7	2.7	0.0	0.0	0.0
	Ocp	1.0	1.6	1.5	2.0	0.0	2.0	1.0	0.0	0.0	0.0
16 hours	Pro	2.6	33.6	28.7	2.2	0.6	19.3	10.8	2.0	0.1	0.2
	Ocp	1.1	1.5	1.7	3.5	12.0	1.6	1.1	13.2	13.0	18.9

**Legend**

- Pro.** Proportion of vehicles in % (Sum may not add up to 100% due to figure rounding)
- Ocp.** Average occupancy of vehicles
- M&H** Medium and Heavy