

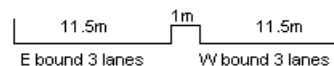
YEAR 2009

COVERAGE (B) STATION 4219

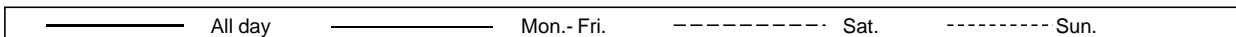
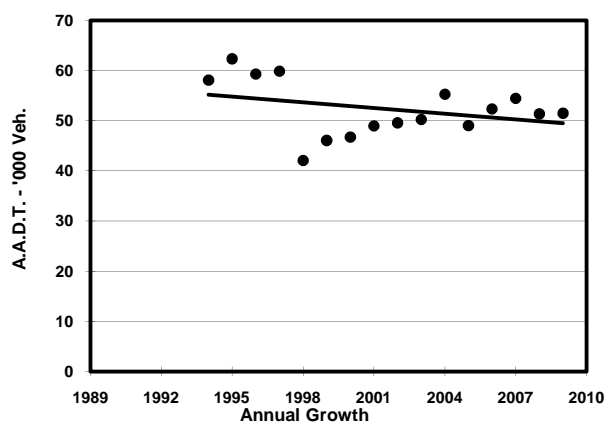
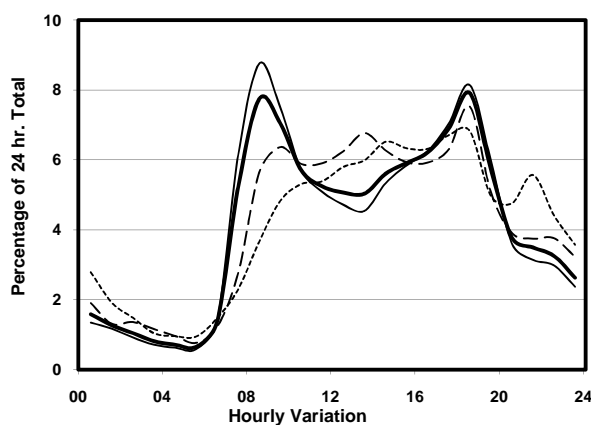
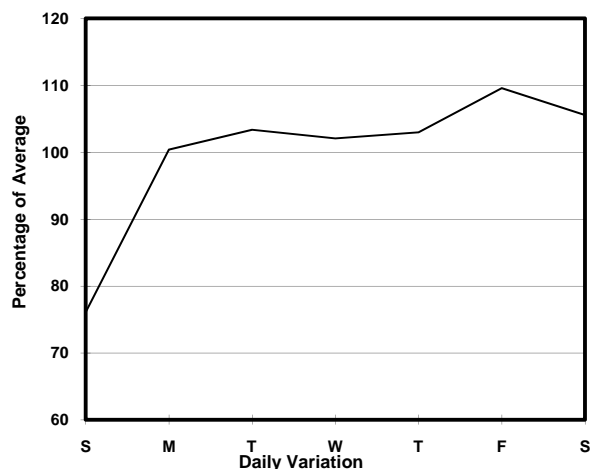
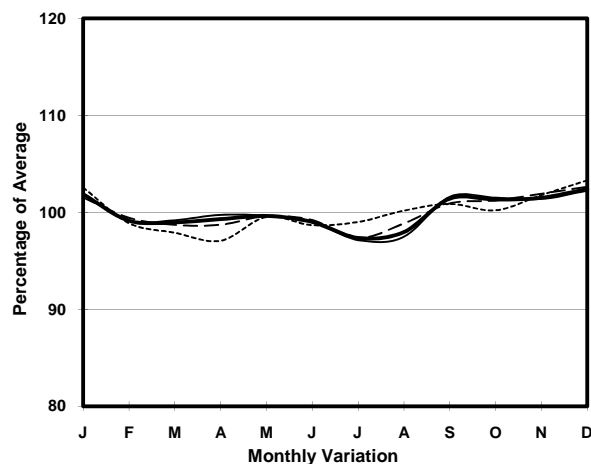
ROAD NETWORK MAJOR

ROAD TYPE EXPRESSWAY

LINK KWUN TONG BYPASS (from KAI YAN ST to LUNG CHEUNG RD)



1. TRAFFIC FLOW VARIATION AND GROWTH



2. TRAFFIC CHARACTERISTICS (BY DIRECTION)

Parameter	All - Day	Mon. - Fri.	Sat.	Sun.
EAST BOUND				
A.A.D.T.	27430	28860	29350	20870
R 12 / 24 - %	72	73.7	68.9	64.4
R 16 / 24 - %	88.6	89.5	86.5	85.4
AM Peak Hour	0800-0900	0800-0900	0900-1000	0900-1000
One-way flow at AM peak hour	2140	2550	1980	930
T - % (AM)	-	8.5	-	-
PM Peak Hour	1800-1900	1800-1900	1800-1900	1800-1900
One-way flow at PM peak hour	2040	2130	2230	1580
T - % (PM)	-	7.4	-	-
Prop.of commercial vehicles - 16 hr.	-	9.3	-	-
WEST BOUND				
A.A.D.T.	24040	25190	25710	18820
R 12 / 24 - %	75.4	76.8	74.5	67.9
R 16 / 24 - %	91.3	92.3	89.9	86.3
AM Peak Hour	0800-0900	0800-0900	0900-1000	0900-1000
One-way flow at AM peak hour	1850	2190	1530	990
T - % (AM)	-	12.4	-	-
PM Peak Hour	1800-1900	1800-1900	1800-1900	1700-1800
One-way flow at PM peak hour	2030	2270	1920	1210
T - % (PM)	-	7.8	-	-
Prop.of commercial vehicles - 16 hr.	-	11.4	-	-

3. OTHER INFORMATION AND COMMENT

4. Vehicle classification and occupancy - Monday to Friday

Time		Class of vehicle									
		Motor	Private	Taxi	Private	PLB	Goods veh.		Non	Fr. Bus	
		Cycle	Car		LB		Light	M & H	Fr. Bus	SD	DD
0700-0800	Pro	3.8	34.1	20.2	3.6	3.3	16.2	4.0	10.0	0.0	4.7
	Ocp	1.1	1.4	1.7	4.5	8.9	1.6	1.2	12.1	0.0	66.4
0800-0900	Pro	2.8	57.9	11.9	0.6	1.5	15.0	4.2	3.4	0.0	2.7
	Ocp	1.1	1.3	1.8	1.6	10.5	1.7	1.4	22.3	0.0	70.1
0900-1000	Pro	2.7	55.0	13.4	0.4	1.3	18.0	6.1	1.3	0.0	1.9
	Ocp	1.1	1.3	1.8	4.0	7.8	1.6	1.4	14.9	0.0	45.7
1000-1100	Pro	3.0	44.3	13.2	1.4	0.9	26.9	7.6	0.5	0.0	2.2
	Ocp	1.1	1.4	1.8	2.2	10.3	1.4	1.3	1.5	0.0	29.7
1100-1200	Pro	1.6	48.1	11.6	0.3	1.9	26.7	6.4	1.0	0.0	2.3
	Ocp	1.0	1.3	1.9	8.0	9.2	1.7	1.4	5.9	0.0	31.9
1200-1300	Pro	1.4	52.9	9.1	1.4	1.4	22.5	5.8	3.0	0.0	2.4
	Ocp	1.0	1.4	1.8	7.7	5.6	1.5	1.3	15.2	0.0	29.1
1300-1400	Pro	2.9	40.7	12.3	1.1	1.7	27.1	8.6	3.3	0.0	2.3
	Ocp	1.2	1.4	1.6	3.4	8.5	1.6	1.4	10.3	0.0	34.1
1400-1500	Pro	2.2	45.7	9.7	1.2	1.4	25.8	10.4	1.6	0.0	1.9
	Ocp	1.1	1.5	2.1	1.6	5.6	1.6	1.2	7.2	0.0	31.5
1500-1600	Pro	2.8	43.9	10.8	1.5	1.2	25.0	10.1	2.7	0.0	2.0
	Ocp	1.0	1.5	2.4	3.4	11.4	1.6	1.4	10.5	0.0	31.4
1600-1700	Pro	3.2	47.9	12.4	1.5	1.0	23.1	5.8	2.4	0.0	2.6
	Ocp	1.1	1.4	1.7	2.2	10.3	1.7	1.5	3.8	0.0	36.8
1700-1800	Pro	4.5	51.0	9.7	1.5	1.1	22.3	5.0	2.7	0.0	2.1
	Ocp	1.1	1.7	1.7	2.2	13.5	1.4	1.4	8.8	0.0	51.8
1800-1900	Pro	4.0	63.3	8.2	0.9	1.9	14.2	3.0	2.2	0.0	2.4
	Ocp	1.1	1.3	2.3	1.4	10.8	1.2	1.2	13.6	0.0	66.0
1900-2000	Pro	2.3	69.5	11.2	0.0	2.2	9.3	1.6	0.9	0.0	3.0
	Ocp	1.3	1.2	2.1	0.0	7.1	1.4	1.6	7.6	0.0	60.0
2000-2100	Pro	3.1	66.8	10.1	0.0	2.2	11.8	1.8	0.9	0.0	3.5
	Ocp	1.1	1.4	2.1	0.0	8.5	1.2	1.2	1.8	0.0	44.0
2100-2200	Pro	3.8	65.1	13.6	0.0	2.8	8.5	1.3	0.5	0.0	4.5
	Ocp	1.3	1.4	1.9	0.0	9.4	1.1	1.2	1.0	0.0	42.8
2200-2300	Pro	5.2	60.5	17.3	0.7	2.0	7.8	2.0	0.2	0.0	4.3
	Ocp	1.3	1.4	2.1	1.3	13.3	1.5	1.2	1.0	0.0	44.3
16 hours	Pro	3.0	53.3	11.8	1.0	1.6	19.0	5.4	2.3	0.0	2.6
	Ocp	1.1	1.4	1.9	3.2	9.3	1.5	1.3	12.1	0.0	48.1

Legend

- Pro.** Proportion of vehicles in % (Sum may not add up to 100% due to figure rounding)
- Ocp.** Average occupancy of vehicles
- M&H** Medium and Heavy