

YEAR 2009

COVERAGE (B) STATION 4220

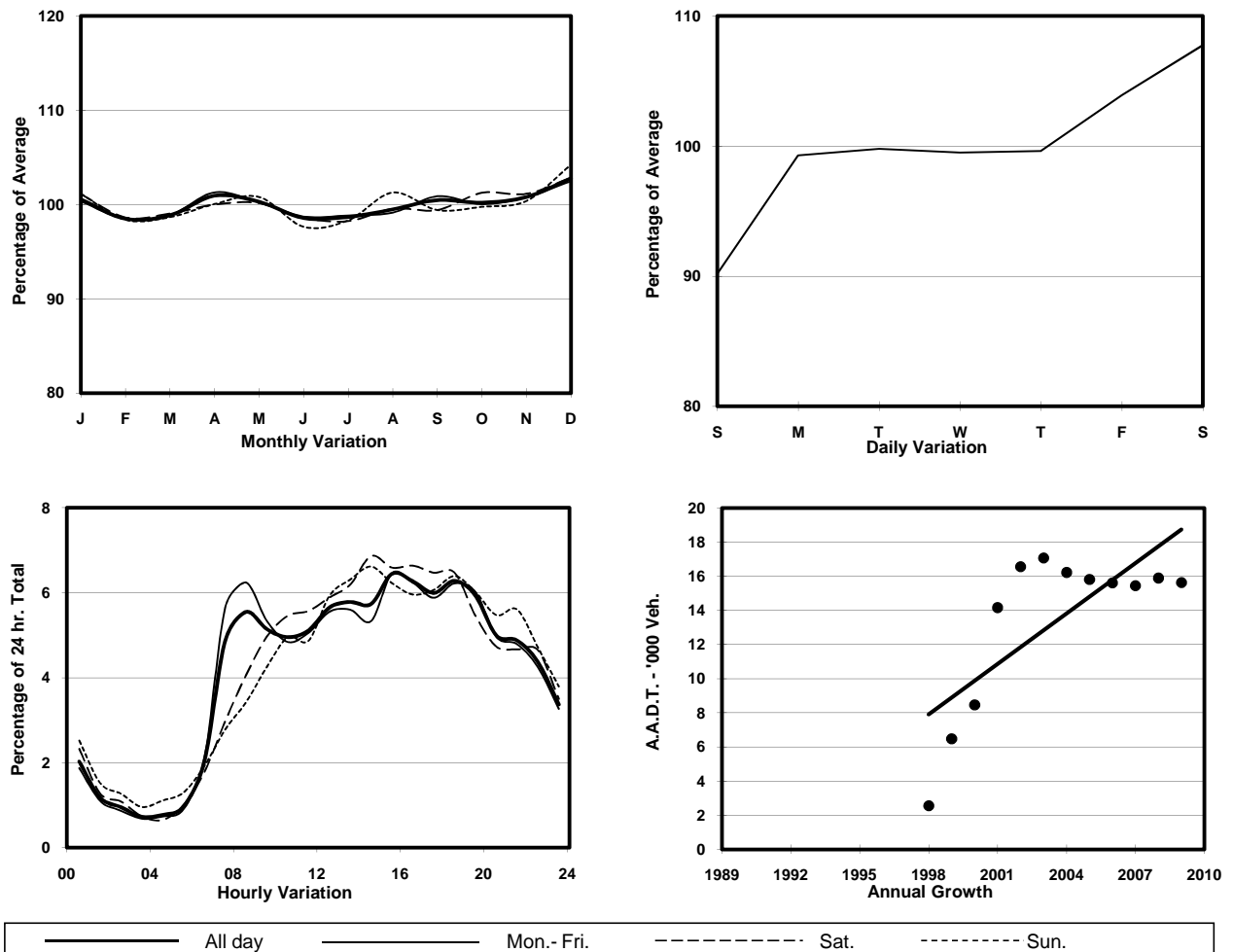
ROAD NETWORK MAJOR

ROAD TYPE PRIMARY DISTRIBUTOR

LINK HOI WANG RD (from HOI TING RD to CHERRY ST RA)



1. TRAFFIC FLOW VARIATION AND GROWTH



2. TRAFFIC CHARACTERISTICS (BY DIRECTION)

| Parameter | All - Day | Mon. - Fri. | Sat. | Sun. |
|--------------------------------------|-----------|-------------|-----------|-----------|
| SOUTH BOUND | | | | |
| A.A.D.T. | 7860 | 7940 | 8520 | 7120 |
| R 12 / 24 - % | 66.8 | 67.4 | 67.4 | 62.9 |
| R 16 / 24 - % | 87.5 | 88.1 | 87.2 | 84.6 |
| AM Peak Hour | 0800-0900 | 0800-0900 | 0900-1000 | 0900-1000 |
| One-way flow at AM peak hour | 410 | 460 | 430 | 310 |
| T - % (AM) | - | 16.2 | - | - |
| PM Peak Hour | 1800-1900 | 1800-1900 | 1800-1900 | 1800-1900 |
| One-way flow at PM peak hour | 530 | 550 | 560 | 460 |
| T - % (PM) | - | 13.3 | - | - |
| Prop.of commercial vehicles - 16 hr. | - | 16.6 | - | - |
| NORTH BOUND | | | | |
| A.A.D.T. | 7760 | 7840 | 8400 | 7080 |
| R 12 / 24 - % | 68.7 | 69.4 | 68.9 | 64.6 |
| R 16 / 24 - % | 88.4 | 88.8 | 88.1 | 86.6 |
| AM Peak Hour | 0800-0900 | 0800-0900 | 0900-1000 | 0900-1000 |
| One-way flow at AM peak hour | 460 | 530 | 410 | 290 |
| T - % (AM) | - | 17.5 | - | - |
| PM Peak Hour | 1600-1700 | 1600-1700 | 1600-1700 | 1600-1700 |
| One-way flow at PM peak hour | 520 | 520 | 590 | 470 |
| T - % (PM) | - | 22.6 | - | - |
| Prop.of commercial vehicles - 16 hr. | - | 20.3 | - | - |

3. OTHER INFORMATION AND COMMENT

4. Vehicle classification and occupancy - Monday to Friday

| Time | | Class of vehicle | | | | | | | | | |
|------------------------|-----|------------------|---------|------|---------|------|------------|-------|---------|---------|------|
| | | Motor | Private | Taxi | Private | PLB | Goods veh. | | Non | Fr. Bus | |
| | | Cycle | Car | | LB | | Light | M & H | Fr. Bus | SD | DD |
| 0700-0800 | Pro | 1.0 | 10.5 | 30.9 | 8.9 | 10.5 | 11.5 | 3.1 | 13.6 | 0.3 | 9.8 |
| | Ocp | 1.0 | 1.5 | 1.8 | 6.3 | 8.0 | 1.3 | 1.5 | 15.8 | 5.5 | 16.5 |
| 0800-0900 | Pro | 0.0 | 33.5 | 26.1 | 2.2 | 7.0 | 14.4 | 3.7 | 4.0 | 0.2 | 8.9 |
| | Ocp | 0.0 | 1.4 | 1.5 | 5.2 | 12.7 | 1.4 | 1.2 | 25.4 | 6.5 | 13.1 |
| 0900-1000 | Pro | 2.0 | 25.7 | 23.2 | 2.0 | 7.9 | 18.8 | 4.0 | 4.0 | 0.2 | 12.3 |
| | Ocp | 1.3 | 1.5 | 1.3 | 1.5 | 6.8 | 1.7 | 1.9 | 12.8 | 6.0 | 6.1 |
| 1000-1100 | Pro | 0.0 | 19.7 | 20.3 | 1.7 | 8.1 | 30.7 | 5.2 | 2.9 | 0.0 | 11.4 |
| | Ocp | 0.0 | 1.6 | 1.6 | 4.3 | 8.1 | 1.5 | 1.8 | 20.8 | 0.0 | 6.6 |
| 1100-1200 | Pro | 3.9 | 15.2 | 21.4 | 1.1 | 12.4 | 25.4 | 3.4 | 5.6 | 0.3 | 11.3 |
| | Ocp | 1.0 | 1.4 | 1.4 | 2.0 | 5.5 | 1.5 | 1.8 | 14.5 | 7.5 | 6.4 |
| 1200-1300 | Pro | 4.5 | 14.0 | 18.0 | 2.5 | 9.5 | 26.0 | 5.5 | 10.5 | 0.1 | 9.3 |
| | Ocp | 1.0 | 1.6 | 1.4 | 2.8 | 6.6 | 1.4 | 1.9 | 8.2 | 6.0 | 6.1 |
| 1300-1400 | Pro | 4.3 | 24.5 | 17.2 | 2.1 | 8.2 | 25.3 | 6.4 | 3.4 | 0.1 | 8.5 |
| | Ocp | 1.0 | 1.5 | 1.5 | 5.4 | 6.9 | 1.6 | 1.5 | 18.6 | 5.0 | 6.4 |
| 1400-1500 | Pro | 3.7 | 27.0 | 18.8 | 0.9 | 7.8 | 24.7 | 5.0 | 3.2 | 0.2 | 8.7 |
| | Ocp | 1.0 | 1.4 | 1.5 | 2.5 | 5.4 | 1.6 | 1.5 | 13.3 | 5.5 | 8.0 |
| 1500-1600 Peak hour | Pro | 2.4 | 24.7 | 21.1 | 2.0 | 8.0 | 23.9 | 2.8 | 7.2 | 0.1 | 7.8 |
| | Ocp | 1.0 | 1.4 | 1.4 | 5.4 | 7.4 | 1.5 | 1.6 | 10.7 | 6.0 | 10.5 |
| 1600-1700 | Pro | 2.8 | 25.1 | 20.2 | 2.4 | 9.3 | 20.6 | 2.8 | 7.3 | 0.3 | 9.1 |
| | Ocp | 1.0 | 1.9 | 1.5 | 7.2 | 8.1 | 1.6 | 1.6 | 12.7 | 15.7 | 9.8 |
| 1700-1800 | Pro | 5.0 | 27.1 | 19.9 | 1.7 | 9.4 | 16.1 | 0.6 | 7.8 | 0.1 | 12.3 |
| | Ocp | 1.2 | 1.7 | 1.5 | 1.7 | 8.4 | 1.6 | 2.0 | 17.5 | 13.0 | 12.5 |
| 1800-1900 | Pro | 5.8 | 39.0 | 14.0 | 0.5 | 9.1 | 15.4 | 0.5 | 5.3 | 0.1 | 10.3 |
| | Ocp | 1.2 | 1.6 | 1.9 | 5.0 | 11.9 | 1.5 | 1.0 | 23.3 | 5.0 | 14.2 |
| 1900-2000 | Pro | 4.7 | 44.5 | 20.3 | 1.3 | 8.5 | 9.3 | 0.4 | 3.0 | 0.2 | 7.8 |
| | Ocp | 1.1 | 1.6 | 2.1 | 5.0 | 11.2 | 1.6 | 1.0 | 33.7 | 5.5 | 11.7 |
| 2000-2100 | Pro | 7.0 | 39.5 | 25.0 | 0.5 | 8.5 | 5.5 | 1.0 | 4.0 | 0.0 | 9.0 |
| | Ocp | 1.2 | 1.8 | 1.6 | 5.0 | 7.2 | 1.3 | 1.5 | 24.9 | 0.0 | 8.5 |
| 2100-2200 | Pro | 4.6 | 42.0 | 22.3 | 0.0 | 15.2 | 2.5 | 0.5 | 3.0 | 0.3 | 9.7 |
| | Ocp | 1.2 | 1.6 | 1.9 | 0.0 | 4.3 | 1.8 | 1.0 | 27.2 | 6.0 | 8.1 |
| 2200-2300 | Pro | 4.6 | 26.8 | 30.1 | 0.7 | 17.0 | 3.3 | 0.0 | 4.6 | 0.2 | 12.8 |
| | Ocp | 1.1 | 1.7 | 1.6 | 4.0 | 4.5 | 1.6 | 0.0 | 34.0 | 1.0 | 7.0 |
| 16 hours | Pro | 3.4 | 27.8 | 21.6 | 1.9 | 9.5 | 17.3 | 2.9 | 5.5 | 0.2 | 9.8 |
| | Ocp | 1.1 | 1.6 | 1.6 | 4.9 | 7.5 | 1.5 | 1.6 | 17.4 | 7.3 | 9.5 |

Legend

Pro. Proportion of vehicles in % (Sum may not add up to 100% due to figure rounding)
Ocp. Average occupancy of vehicles
M&H Medium and Heavy