

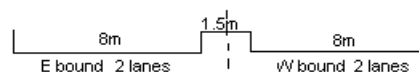
YEAR 2009

COVERAGE (B) STATION 4221

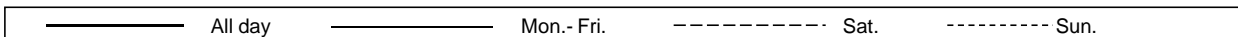
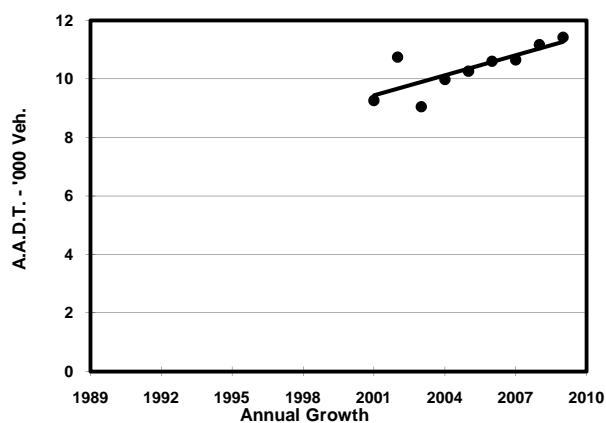
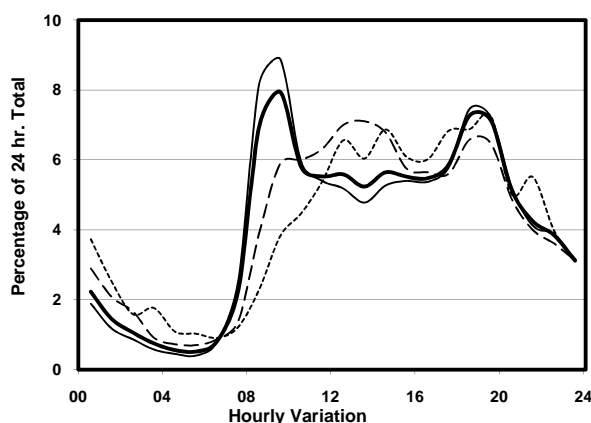
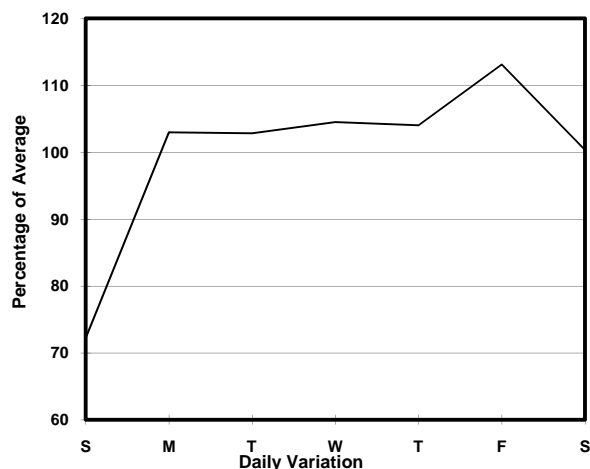
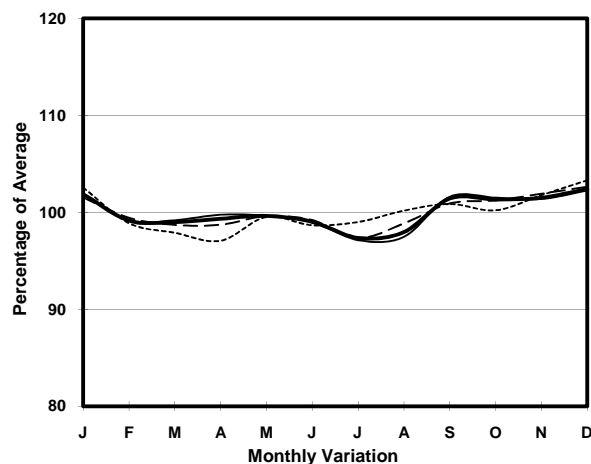
ROAD NETWORK MAJOR

ROAD TYPE EXPRESSWAY

LINK HUNG HOM BYPASS (from SLIP RD TO CHEONG TUNG RD S to SLIP RD FROM CHEONG TUNG RD S)



1. TRAFFIC FLOW VARIATION AND GROWTH



2. TRAFFIC CHARACTERISTICS (BY DIRECTION)

Parameter	All - Day	Mon. - Fri.	Sat.	Sun.
EAST BOUND				
A.A.D.T.	5440	5790	5680	4030
R 12 / 24 - %	68.9	70.2	67.9	61.5
R 16 / 24 - %	88.7	90.2	85.7	82.4
AM Peak Hour	0900-1000	0900-1000	0900-1000	0900-1000
One-way flow at AM peak hour	410	490	290	150
T - % (AM)	-	8.2	-	-
PM Peak Hour	1800-1900	1800-1900	1800-1900	1800-1900
One-way flow at PM peak hour	410	440	430	270
T - % (PM)	-	7.6	-	-
Prop.of commercial vehicles - 16 hr.	-	6.8	-	-
WEST BOUND				
A.A.D.T.	5980	6430	5950	4340
R 12 / 24 - %	69.3	70.3	68.2	63.5
R 16 / 24 - %	90.2	91.1	88.2	86.1
AM Peak Hour	0900-1000	0900-1000	0900-1000	0900-1000
One-way flow at AM peak hour	500	600	390	170
T - % (AM)	-	9.5	-	-
PM Peak Hour	1800-1900	1800-1900	1600-1700	1800-1900
One-way flow at PM peak hour	420	470	350	300
T - % (PM)	-	4.4	-	-
Prop.of commercial vehicles - 16 hr.	-	7.2	-	-

3. OTHER INFORMATION AND COMMENT

4. Vehicle classification and occupancy - Monday to Friday

Time		Class of vehicle									
		Motor	Private	Taxi	Private	PLB	Goods veh.		Non	Fr. Bus	
		Cycle	Car		LB		Light	M & H	Fr. Bus	SD	DD
0700-0800	Pro	0.0	10.3	72.0	0.0	0.0	6.4	1.3	5.1	0.0	4.8
	Ocp	0.0	1.8	1.5	0.0	0.0	1.2	1.0	7.8	0.0	8.5
0800-0900	Pro	0.4	12.9	68.5	0.4	1.8	8.8	0.4	4.8	0.0	2.0
	Ocp	1.0	1.3	1.9	1.0	7.4	1.5	3.0	13.7	0.0	30.5
0900-1000 Peak hour	Pro	0.7	24.9	50.2	0.0	1.4	14.0	1.0	6.1	0.0	1.7
	Ocp	1.0	1.7	1.6	0.0	8.0	1.4	1.3	9.7	0.0	10.6
1000-1100	Pro	0.5	18.6	52.1	0.0	0.5	20.1	3.6	3.6	0.0	1.0
	Ocp	1.0	1.4	1.7	0.0	1.0	1.3	1.3	4.4	0.0	8.0
1100-1200	Pro	1.1	27.4	42.7	0.6	0.0	19.4	1.7	5.7	0.0	1.4
	Ocp	1.0	1.6	2.0	1.0	0.0	1.6	1.3	13.8	0.0	8.8
1200-1300	Pro	1.7	22.4	40.1	0.6	0.0	25.2	1.1	7.5	0.0	1.4
	Ocp	1.0	1.5	1.8	13.0	0.0	1.5	1.5	4.7	0.0	10.0
1300-1400	Pro	0.6	27.4	44.6	1.9	0.0	17.8	2.5	3.8	0.0	1.3
	Ocp	1.0	1.3	2.4	5.0	0.0	1.7	2.0	16.8	0.0	7.0
1400-1500	Pro	0.6	24.6	51.0	0.6	0.6	16.0	1.7	3.4	0.0	1.4
	Ocp	1.0	1.5	1.9	1.0	1.0	1.5	2.7	4.5	0.0	9.8
1500-1600	Pro	3.0	28.0	38.9	0.6	0.0	23.1	0.0	4.9	0.0	1.5
	Ocp	1.2	1.5	1.8	8.0	0.0	1.5	0.0	12.1	0.0	8.2
1600-1700	Pro	1.9	20.3	41.3	1.3	0.0	25.4	1.3	7.0	0.0	1.6
	Ocp	1.3	1.6	2.2	6.0	0.0	1.8	2.0	8.0	0.0	12.5
1700-1800	Pro	0.5	29.7	44.5	1.6	0.5	10.6	0.0	11.1	0.0	1.5
	Ocp	1.0	1.7	2.3	1.3	1.0	1.5	0.0	7.0	0.0	12.8
1800-1900	Pro	2.9	27.3	55.6	0.0	2.4	6.2	1.0	3.4	0.0	1.3
	Ocp	1.2	1.7	2.4	0.0	17.0	1.5	1.0	8.6	0.0	33.6
1900-2000	Pro	1.6	35.0	53.5	1.2	2.4	3.2	0.0	2.4	0.0	0.6
	Ocp	1.0	1.8	2.3	1.0	16.2	1.4	0.0	1.0	0.0	46.0
2000-2100	Pro	1.7	24.9	69.5	0.0	1.2	1.2	0.0	0.6	0.1	0.9
	Ocp	1.0	2.0	2.0	0.0	1.0	1.0	0.0	1.0	1.0	24.2
2100-2200	Pro	0.8	18.8	77.6	0.0	0.0	0.0	0.0	0.8	0.0	2.0
	Ocp	1.0	1.8	2.0	0.0	0.0	0.0	0.0	1.0	0.0	18.1
2200-2300	Pro	0.7	28.6	65.6	0.0	0.0	1.9	0.0	1.9	0.0	1.3
	Ocp	2.0	1.8	1.8	0.0	0.0	1.7	0.0	1.0	0.0	12.0
16 hours	Pro	1.2	24.3	53.6	0.5	0.9	12.5	1.0	4.6	0.1	1.5
	Ocp	1.1	1.6	2.0	3.6	10.2	1.5	1.6	8.5	1.0	16.2

Legend

- Pro.** Proportion of vehicles in % (Sum may not add up to 100% due to figure rounding)
- Ocp.** Average occupancy of vehicles
- M&H** Medium and Heavy