

YEAR

2009

LINK SOY ST (from SAI YEUNG CHOI ST S to YIM PO FONG ST)

COVERAGE (B) STATION

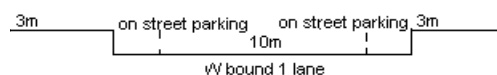
4403

ROAD NETWORK

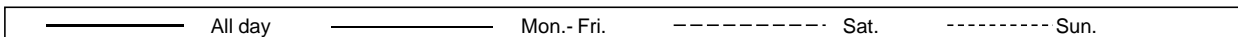
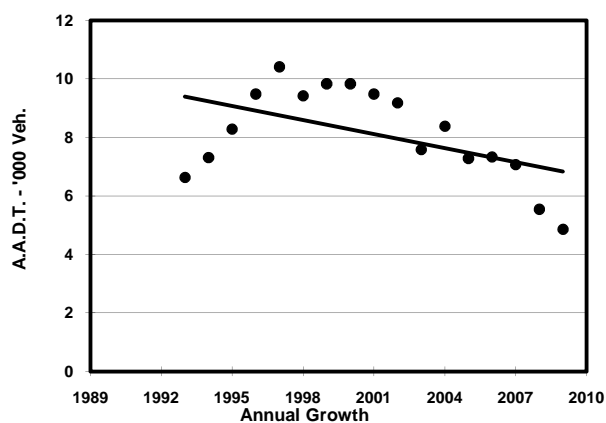
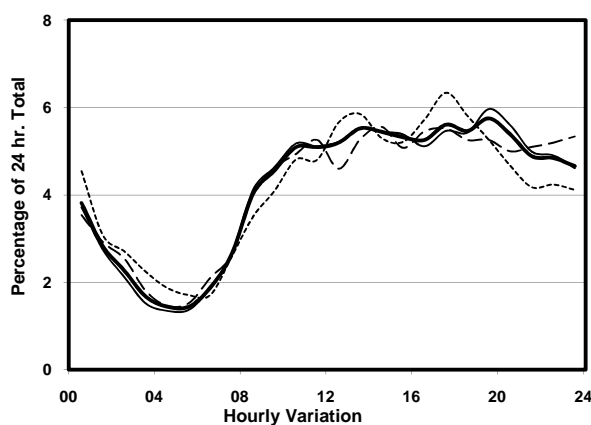
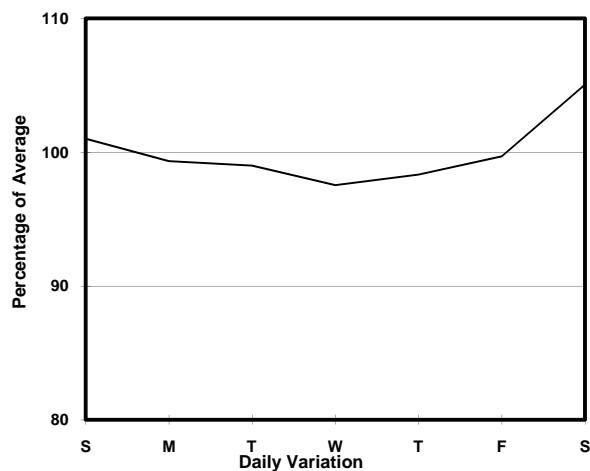
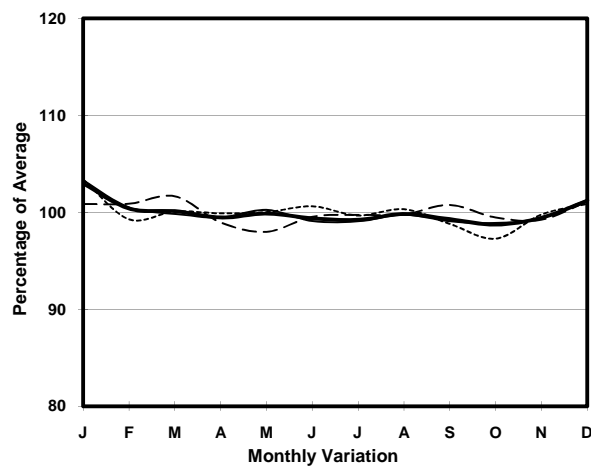
MINOR

ROAD TYPE

LOCAL DISTRIBUTOR



## 1. TRAFFIC FLOW VARIATION AND GROWTH



## 2. TRAFFIC CHARACTERISTICS (BY DIRECTION)

| Parameter                            | All - Day | Mon. - Fri. | Sat.      | Sun.      |
|--------------------------------------|-----------|-------------|-----------|-----------|
| <b>WEST BOUND</b>                    |           |             |           |           |
| A.A.D.T.                             | 4860      | 4800        | 5110      | 4910      |
| R 12 / 24 - %                        | 59.2      | 59.3        | 58.2      | 59.7      |
| R 16 / 24 - %                        | 80        | 80.7        | 78.8      | 78        |
| AM Peak Hour                         | 0900-1000 | 0900-1000   | 0900-1000 | 0900-1000 |
| One-way flow at AM peak hour         | 220       | 220         | 240       | 200       |
| T - % (AM)                           | -         | 4.7         | -         | -         |
| PM Peak Hour                         | 1700-1800 | 1700-1800   | 1700-1800 | 1700-1800 |
| One-way flow at PM peak hour         | 270       | 260         | 280       | 310       |
| T - % (PM)                           | -         | 4.7         | -         | -         |
| Prop.of commercial vehicles - 16 hr. | -         | 5.3         | -         | -         |
| <br>A.A.D.T.                         | -         | -           | -         | -         |
| R 12 / 24 - %                        | -         | -           | -         | -         |
| R 16 / 24 - %                        | -         | -           | -         | -         |
| AM Peak Hour                         | -         | -           | -         | -         |
| One-way flow at AM peak hour         | -         | -           | -         | -         |
| T - % (AM)                           | -         | -           | -         | -         |
| PM Peak Hour                         | -         | -           | -         | -         |
| One-way flow at PM peak hour         | -         | -           | -         | -         |
| T - % (PM)                           | -         | -           | -         | -         |
| Prop.of commercial vehicles - 16 hr. | -         | -           | -         | -         |

## 3. OTHER INFORMATION AND COMMENT

**4. Vehicle classification and occupancy - Monday to Friday**

| Time      |     | Class of vehicle |         |      |         |      |            |       |         |         |     |
|-----------|-----|------------------|---------|------|---------|------|------------|-------|---------|---------|-----|
|           |     | Motor            | Private | Taxi | Private | PLB  | Goods veh. |       | Non     | Fr. Bus |     |
|           |     | Cycle            | Car     |      | LB      |      | Light      | M & H | Fr. Bus | SD      | DD  |
| 0700-0800 | Pro | 0.0              | 7.4     | 29.6 | 7.4     | 44.4 | 0.0        | 0.0   | 11.1    | 0.0     | 0.0 |
|           | Ocp | 0.0              | 1.0     | 1.4  | 6.0     | 9.3  | 0.0        | 0.0   | 7.7     | 0.0     | 0.0 |
| 0800-0900 | Pro | 0.0              | 9.4     | 18.8 | 3.1     | 37.5 | 15.6       | 3.1   | 12.5    | 0.0     | 0.0 |
|           | Ocp | 0.0              | 1.3     | 1.5  | 1.0     | 9.3  | 1.0        | 2.0   | 8.8     | 0.0     | 0.0 |
| 0900-1000 | Pro | 1.6              | 26.6    | 29.7 | 0.0     | 26.6 | 10.9       | 3.1   | 1.6     | 0.0     | 0.0 |
|           | Ocp | 1.0              | 1.2     | 1.8  | 0.0     | 8.2  | 1.3        | 1.5   | 1.0     | 0.0     | 0.0 |
| 1000-1100 | Pro | 3.4              | 8.5     | 47.5 | 0.0     | 13.6 | 18.6       | 1.7   | 6.8     | 0.0     | 0.0 |
|           | Ocp | 1.0              | 1.2     | 1.3  | 0.0     | 8.1  | 1.8        | 2.0   | 5.0     | 0.0     | 0.0 |
| 1100-1200 | Pro | 8.2              | 18.0    | 31.1 | 0.0     | 16.4 | 21.3       | 1.6   | 3.3     | 0.0     | 0.0 |
|           | Ocp | 1.0              | 1.3     | 1.3  | 0.0     | 6.7  | 1.6        | 3.0   | 7.5     | 0.0     | 0.0 |
| 1200-1300 | Pro | 3.1              | 21.5    | 38.5 | 0.0     | 16.9 | 18.5       | 1.5   | 0.0     | 0.0     | 0.0 |
|           | Ocp | 1.0              | 1.6     | 1.5  | 0.0     | 7.0  | 1.7        | 3.0   | 0.0     | 0.0     | 0.0 |
| 1300-1400 | Pro | 1.8              | 28.6    | 28.6 | 0.0     | 17.9 | 12.5       | 3.6   | 7.1     | 0.0     | 0.0 |
|           | Ocp | 1.0              | 1.8     | 1.5  | 0.0     | 8.2  | 1.9        | 2.5   | 3.5     | 0.0     | 0.0 |
| 1400-1500 | Pro | 1.8              | 40.4    | 14.0 | 0.0     | 17.5 | 24.6       | 0.0   | 1.8     | 0.0     | 0.0 |
|           | Ocp | 1.0              | 1.6     | 1.4  | 0.0     | 9.0  | 1.6        | 0.0   | 1.0     | 0.0     | 0.0 |
| 1500-1600 | Pro | 3.7              | 27.8    | 37.0 | 1.9     | 13.0 | 13.0       | 0.0   | 3.7     | 0.0     | 0.0 |
|           | Ocp | 1.0              | 1.5     | 1.4  | 12.0    | 6.7  | 1.4        | 0.0   | 1.0     | 0.0     | 0.0 |
| 1600-1700 | Pro | 8.1              | 27.0    | 23.0 | 0.0     | 14.9 | 18.9       | 5.4   | 2.7     | 0.0     | 0.0 |
|           | Ocp | 1.0              | 1.9     | 1.5  | 0.0     | 7.3  | 1.4        | 2.5   | 1.0     | 0.0     | 0.0 |
| 1700-1800 | Pro | 12.5             | 31.3    | 20.3 | 0.0     | 18.8 | 12.5       | 0.0   | 4.7     | 0.0     | 0.0 |
|           | Ocp | 1.1              | 1.5     | 1.2  | 0.0     | 9.4  | 1.8        | 0.0   | 1.3     | 0.0     | 0.0 |
| 1800-1900 | Pro | 7.4              | 25.9    | 37.0 | 0.0     | 20.4 | 5.6        | 1.9   | 1.9     | 0.0     | 0.0 |
|           | Ocp | 1.0              | 1.7     | 1.9  | 0.0     | 8.8  | 1.7        | 2.0   | 1.0     | 0.0     | 0.0 |
| 1900-2000 | Pro | 15.0             | 25.0    | 35.0 | 0.0     | 11.7 | 8.3        | 0.0   | 5.0     | 0.0     | 0.0 |
|           | Ocp | 1.2              | 1.4     | 2.0  | 0.0     | 11.6 | 1.4        | 0.0   | 16.3    | 0.0     | 0.0 |
| 2000-2100 | Pro | 9.1              | 36.4    | 40.0 | 0.0     | 10.9 | 0.0        | 1.8   | 1.8     | 0.0     | 0.0 |
|           | Ocp | 1.4              | 1.7     | 1.6  | 0.0     | 14.8 | 0.0        | 2.0   | 1.0     | 0.0     | 0.0 |
| 2100-2200 | Pro | 10.2             | 40.8    | 28.6 | 0.0     | 18.4 | 0.0        | 0.0   | 2.0     | 0.0     | 0.0 |
|           | Ocp | 2.0              | 1.9     | 2.4  | 0.0     | 6.4  | 0.0        | 0.0   | 1.0     | 0.0     | 0.0 |
| 2200-2300 | Pro | 6.7              | 41.3    | 29.3 | 0.0     | 18.7 | 1.3        | 0.0   | 2.7     | 0.0     | 0.0 |
|           | Ocp | 1.2              | 1.8     | 1.5  | 0.0     | 4.8  | 1.0        | 0.0   | 14.0    | 0.0     | 0.0 |
| 16 hours  | Pro | 6.2              | 27.2    | 30.7 | 0.4     | 18.4 | 11.8       | 1.5   | 3.8     | 0.0     | 0.0 |
|           | Ocp | 1.2              | 1.6     | 1.6  | 6.3     | 8.2  | 1.6        | 2.3   | 5.8     | 0.0     | 0.0 |

**Legend**

**Pro.** Proportion of vehicles in % (Sum may not add up to 100% due to figure rounding)  
**Ocp.** Average occupancy of vehicles  
**M&H** Medium and Heavy