

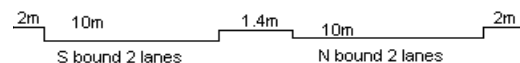
YEAR 2009

COVER AGE (B) STATION 6203

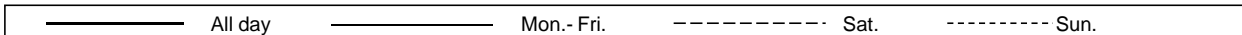
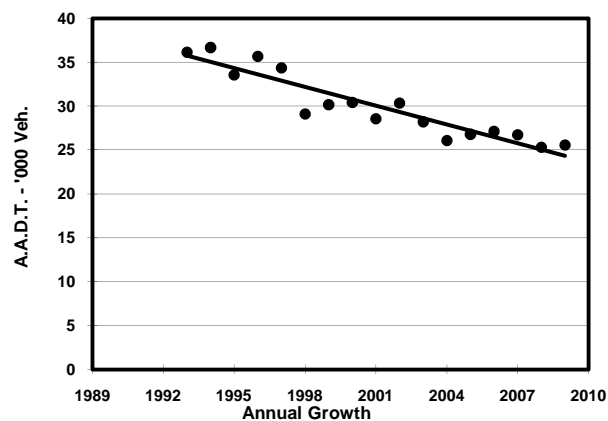
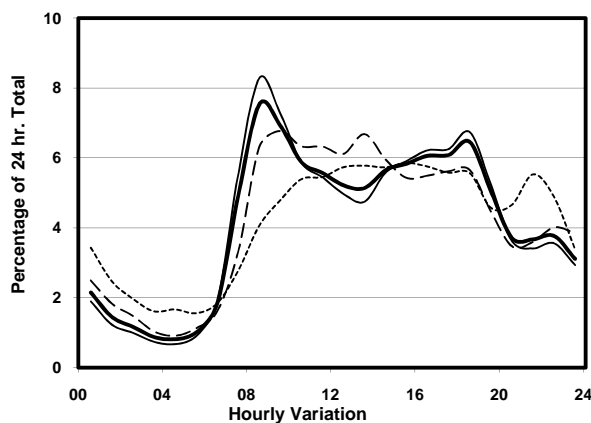
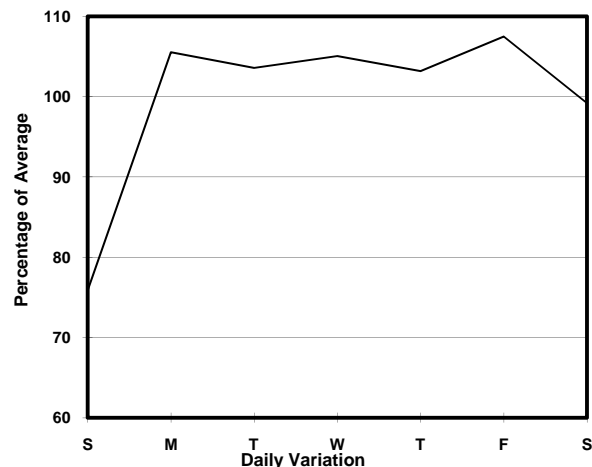
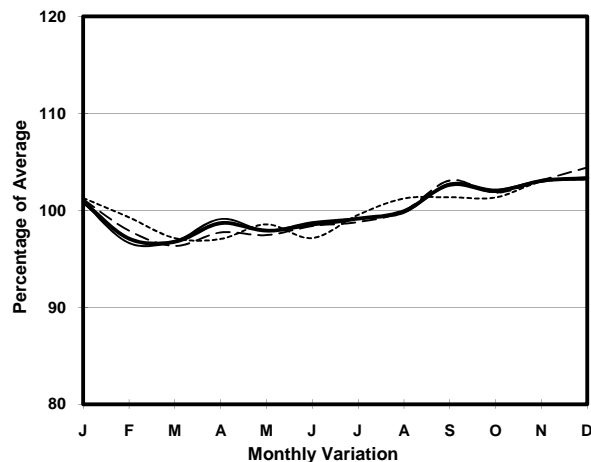
ROAD NETWORK MAJOR

ROAD TYPE PRIMARY DISTRIBUTOR

LINK CASTLE PEAK RD - KWAI CHUNG (from CHING CHEUNG RD to TAI WO INT)



1. TRAFFIC FLOW VARIATION AND GROWTH



2. TRAFFIC CHARACTERISTICS (BY DIRECTION)

Parameter	All - Day	Mon. - Fri.	Sat.	Sun.
SOUTH BOUND				
A.A.D.T.	13360	14080	13580	10720
R 12 / 24 - %	72.2	73.6	71.3	64.5
R 16 / 24 - %	87.7	88.9	85.9	82.5
AM Peak Hour	0800-0900	0800-0900	0900-1000	0900-1000
One-way flow at AM peak hour	1110	1290	930	580
T - % (AM)	-	9.3	-	-
PM Peak Hour	1800-1900	1800-1900	1800-1900	1600-1700
One-way flow at PM peak hour	880	970	780	600
T - % (PM)	-	9.4	-	-
Prop.of commercial vehicles - 16 hr.	-	9.3	-	-
NORTH BOUND				
A.A.D.T.	12210	13100	12110	8920
R 12 / 24 - %	70.3	72.1	68.7	60
R 16 / 24 - %	87.3	88.5	85.3	81.6
AM Peak Hour	0900-1000	0900-1000	0900-1000	0900-1000
One-way flow at AM peak hour	850	970	810	360
T - % (AM)	-	11	-	-
PM Peak Hour	1600-1700	1600-1700	1600-1700	1600-1700
One-way flow at PM peak hour	800	890	710	530
T - % (PM)	-	11.7	-	-
Prop.of commercial vehicles - 16 hr.	-	11	-	-

3. OTHER INFORMATION AND COMMENT

4. Vehicle classification and occupancy - Monday to Friday

Time		Class of vehicle									
		Motor	Private	Taxi	Private	PLB	Goods veh.		Non	Fr. Bus	
		Cycle	Car		LB		Light	M & H	Fr. Bus	SD	DD
0700-0800	Pro	6.8	19.8	23.5	2.5	7.7	23.2	3.1	7.4	0.1	6.0
	Ocp	1.0	1.4	2.1	8.8	14.6	1.5	1.4	10.3	1.0	71.7
0800-0900	Pro	6.4	39.2	22.4	1.4	7.6	14.0	2.1	2.9	0.0	4.1
	Ocp	1.1	1.2	2.0	7.4	15.3	1.6	1.7	22.2	0.0	83.9
0900-1000	Pro	2.3	38.9	22.6	0.6	4.2	22.4	3.8	0.8	0.0	4.4
	Ocp	1.0	1.3	1.8	2.0	13.8	1.5	1.4	11.5	0.0	54.3
1000-1100	Pro	4.0	29.0	20.5	0.0	5.1	33.2	3.7	0.3	0.0	4.3
	Ocp	1.2	1.5	1.8	0.0	9.7	1.6	1.9	18.0	0.0	31.0
1100-1200	Pro	4.2	34.1	12.1	2.0	3.9	32.4	5.1	2.3	0.0	3.9
	Ocp	1.1	1.5	1.8	1.6	9.7	1.5	1.6	4.9	0.0	37.1
1200-1300	Pro	4.1	33.2	15.4	2.1	4.4	29.0	3.9	3.9	0.0	4.1
	Ocp	1.0	1.5	1.8	2.7	11.6	1.5	1.5	15.8	0.0	39.7
1300-1400	Pro	3.0	26.7	20.3	1.4	5.4	31.8	3.7	3.4	0.0	4.4
	Ocp	1.0	1.6	1.9	7.3	8.3	1.5	1.8	9.2	0.0	39.4
1400-1500	Pro	3.3	33.5	11.5	1.1	5.2	32.9	7.1	1.4	0.0	4.0
	Ocp	1.0	1.6	1.7	3.8	9.1	1.5	1.7	13.2	0.0	36.2
1500-1600	Pro	4.2	29.7	16.1	2.3	6.8	28.9	4.8	2.8	0.0	4.3
	Ocp	1.1	1.5	1.6	2.3	7.0	1.6	1.5	14.2	0.0	36.4
1600-1700	Pro	2.9	30.8	21.1	1.8	4.4	27.4	3.4	3.4	0.0	4.9
	Ocp	1.0	1.6	1.6	3.6	12.6	1.5	1.7	9.5	0.0	37.8
1700-1800	Pro	5.5	34.4	17.6	1.1	4.2	27.6	2.6	2.1	0.0	4.9
	Ocp	1.0	1.4	1.6	2.5	11.5	1.5	1.8	9.1	0.0	56.1
1800-1900	Pro	4.3	47.1	13.3	1.8	9.4	15.1	1.1	2.7	0.0	5.1
	Ocp	1.1	1.3	1.7	2.3	14.0	1.5	1.2	8.4	0.0	85.4
1900-2000	Pro	3.6	50.4	15.7	0.0	14.5	8.9	0.3	1.2	0.0	5.5
	Ocp	1.0	1.4	1.9	0.0	12.1	1.6	1.0	7.5	0.0	67.0
2000-2100	Pro	5.8	47.0	23.9	0.0	11.6	5.4	0.8	0.0	0.0	5.6
	Ocp	1.0	1.7	2.0	0.0	9.0	1.6	1.0	0.0	0.0	42.6
2100-2200	Pro	4.4	43.8	24.5	0.4	14.9	4.4	0.8	0.8	0.0	5.9
	Ocp	1.3	1.5	2.1	3.0	8.5	1.8	1.0	6.5	0.0	42.0
2200-2300	Pro	4.5	42.5	22.1	0.0	18.5	4.5	0.9	0.5	0.0	6.4
	Ocp	1.3	1.5	1.8	0.0	8.2	1.4	1.5	1.0	0.0	38.5
16 hours	Pro	4.3	36.2	18.8	1.2	7.4	21.9	3.0	2.3	0.1	4.8
	Ocp	1.1	1.4	1.8	4.1	11.2	1.5	1.6	11.9	1.0	52.7

Legend

- Pro.** Proportion of vehicles in % (Sum may not add up to 100% due to figure rounding)
- Ocp.** Average occupancy of vehicles
- M&H** Medium and Heavy