

YEAR

2009

LINK

FAN KAM RD (from KAM TIN RD to CASTLE PEAK RD)

COVERAGE (B) STATION

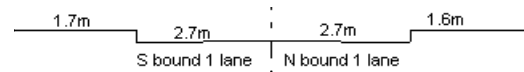
6212

ROAD NETWORK

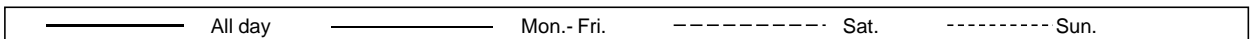
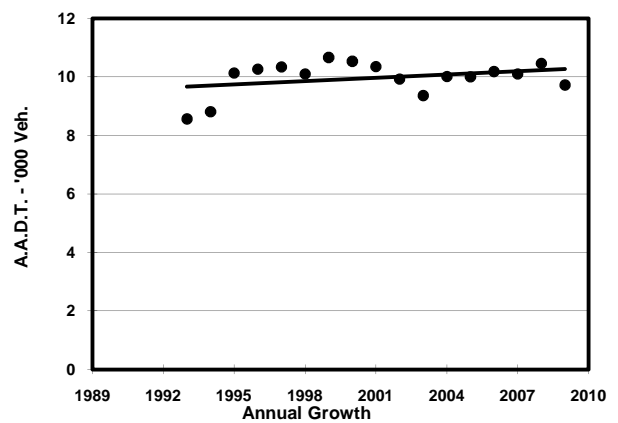
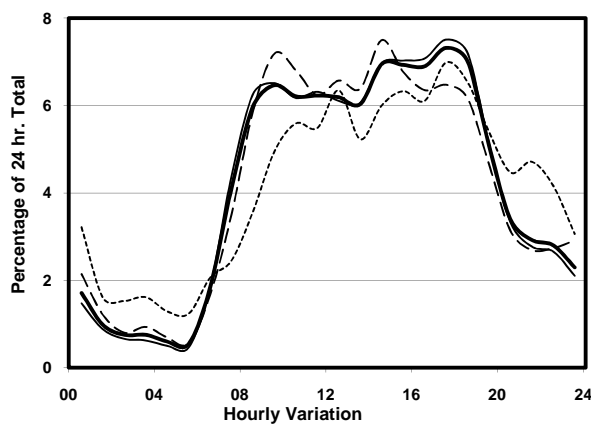
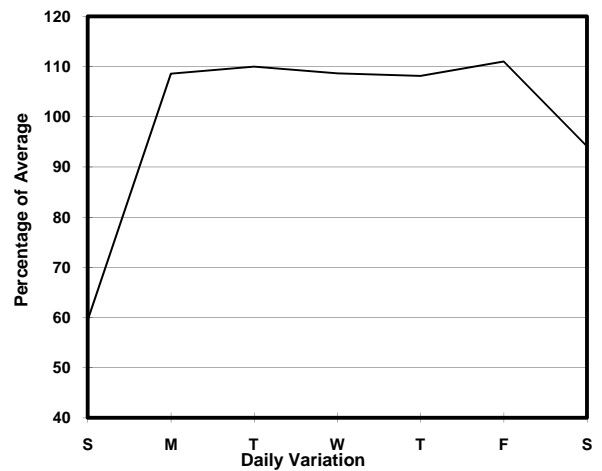
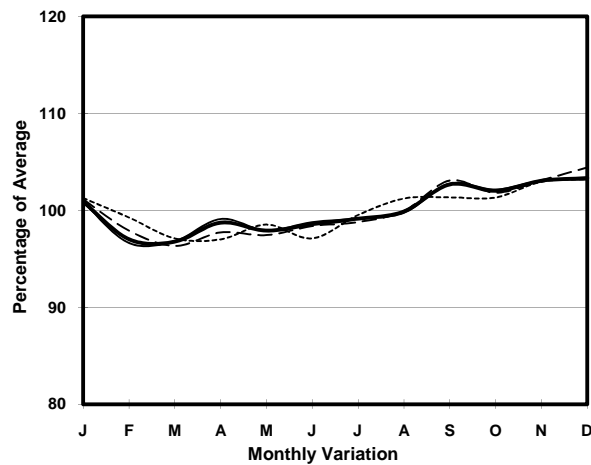
MAJOR

ROAD TYPE

RURAL ROAD



1. TRAFFIC FLOW VARIATION AND GROWTH



2. TRAFFIC CHARACTERISTICS (BY DIRECTION)

Parameter	All - Day	Mon. - Fri.	Sat.	Sun.
SOUTH BOUND				
A.A.D.T.	4940	5530	4730	2970
R 12 / 24 - %	75.3	76.6	74.9	63.1
R 16 / 24 - %	90.2	91.2	88.6	83
AM Peak Hour	0900-1000	0900-1000	0900-1000	0900-1000
One-way flow at AM peak hour	340	380	340	140
T - % (AM)	-	9.2	-	-
PM Peak Hour	1700-1800	1600-1700	1600-1700	1700-1800
One-way flow at PM peak hour	350	400	310	210
T - % (PM)	-	5.5	-	-
Prop.of commercial vehicles - 16 hr.	-	9.4	-	-
NORTH BOUND				
A.A.D.T.	4780	5320	4610	2930
R 12 / 24 - %	77.4	78.6	76.9	68.2
R 16 / 24 - %	90.8	91.7	89.5	85.8
AM Peak Hour	0800-0900	0800-0900	0900-1000	0900-1000
One-way flow at AM peak hour	310	360	330	160
T - % (AM)	-	7.8	-	-
PM Peak Hour	1700-1800	1700-1800	1700-1800	1700-1800
One-way flow at PM peak hour	360	420	310	210
T - % (PM)	-	6.3	-	-
Prop.of commercial vehicles - 16 hr.	-	9.8	-	-

3. OTHER INFORMATION AND COMMENT

4. Vehicle classification and occupancy - Monday to Friday

Time		Class of vehicle									
		Motor	Private	Taxi	Private	PLB	Goods veh.		Non	Fr. Bus	
		Cycle	Car		LB		Light	M & H	Fr. Bus	SD	DD
0700-0800	Pro	0.0	24.4	21.1	1.1	7.8	34.4	6.7	2.2	1.1	1.1
	Ocp	0.0	1.7	1.4	2.0	15.0	1.5	1.2	14.0	30.8	42.0
0800-0900	Pro	1.4	47.4	16.9	1.4	6.1	16.9	8.1	0.7	0.5	0.7
	Ocp	1.0	1.5	1.4	3.5	12.8	1.5	1.0	3.0	32.7	25.8
0900-1000	Pro	1.6	51.7	14.1	0.0	3.1	21.1	7.0	0.0	0.6	0.8
	Ocp	1.0	1.3	1.3	0.0	9.3	1.4	1.4	0.0	17.0	13.8
1000-1100	Pro	4.0	41.3	10.5	0.8	3.2	32.4	6.5	0.0	0.8	0.4
	Ocp	1.0	1.3	1.4	3.0	13.3	1.3	1.0	0.0	11.8	7.5
1100-1200	Pro	0.8	38.6	8.8	0.0	4.0	32.9	13.7	0.0	0.4	0.8
	Ocp	1.0	1.4	2.1	0.0	7.6	1.3	1.1	0.0	15.0	12.5
1200-1300	Pro	2.0	38.2	16.4	5.5	2.7	26.6	6.8	0.7	0.5	0.5
	Ocp	1.0	1.3	1.5	8.0	6.5	1.8	1.4	1.0	16.3	10.7
1300-1400	Pro	3.5	38.3	5.7	0.0	3.5	34.0	13.5	0.0	0.9	0.5
	Ocp	1.2	1.7	1.3	0.0	5.8	1.7	1.4	0.0	8.0	24.0
1400-1500	Pro	1.3	43.6	7.4	1.3	3.4	30.8	11.4	0.0	0.5	0.3
	Ocp	1.0	1.5	1.4	3.0	9.8	1.3	1.4	0.0	13.7	13.0
1500-1600	Pro	1.3	37.0	10.8	0.7	2.0	34.3	12.8	0.0	0.5	0.5
	Ocp	1.0	1.4	1.5	4.0	15.0	1.4	1.1	0.0	17.7	13.7
1600-1700	Pro	0.7	45.8	8.3	1.4	3.5	32.6	4.2	2.1	0.7	0.7
	Ocp	1.0	1.5	1.8	10.5	12.0	1.4	1.0	11.7	20.5	22.3
1700-1800 Peak hour	Pro	3.9	40.3	11.7	5.2	3.9	27.9	5.8	0.0	0.7	0.7
	Ocp	1.0	1.7	1.9	4.3	9.8	1.5	1.0	0.0	24.0	15.0
1800-1900	Pro	1.8	58.9	7.1	1.2	3.5	19.4	5.9	1.2	0.6	0.4
	Ocp	1.3	1.4	1.3	1.0	16.7	1.5	1.2	2.5	25.3	42.7
1900-2000	Pro	4.8	69.1	3.8	1.0	5.8	10.6	2.9	1.0	0.7	0.5
	Ocp	1.0	1.5	1.3	1.0	12.0	1.5	1.0	12.0	28.0	10.5
2000-2100	Pro	1.7	53.0	17.1	0.0	12.0	10.3	3.4	0.0	0.9	1.7
	Ocp	1.0	1.4	1.8	0.0	6.3	1.0	1.5	0.0	13.5	11.0
2100-2200	Pro	0.0	61.0	17.9	0.0	10.8	7.2	0.0	0.0	1.8	1.3
	Ocp	0.0	1.4	1.5	0.0	4.5	2.0	0.0	0.0	11.8	8.3
2200-2300	Pro	2.4	51.8	14.1	0.0	9.4	14.1	4.7	0.0	1.8	1.8
	Ocp	1.0	1.6	1.8	0.0	8.5	1.5	1.5	0.0	8.7	9.7
16 hours	Pro	2.0	45.3	11.3	1.5	4.5	25.8	7.7	0.5	0.7	0.7
	Ocp	1.1	1.5	1.5	5.1	10.4	1.5	1.2	8.4	18.4	18.4

Legend

- Pro.** Proportion of vehicles in % (Sum may not add up to 100% due to figure rounding)
- Ocp.** Average occupancy of vehicles
- M&H** Medium and Heavy