

YEAR 2009

COVERAGE (B) STATION 6219

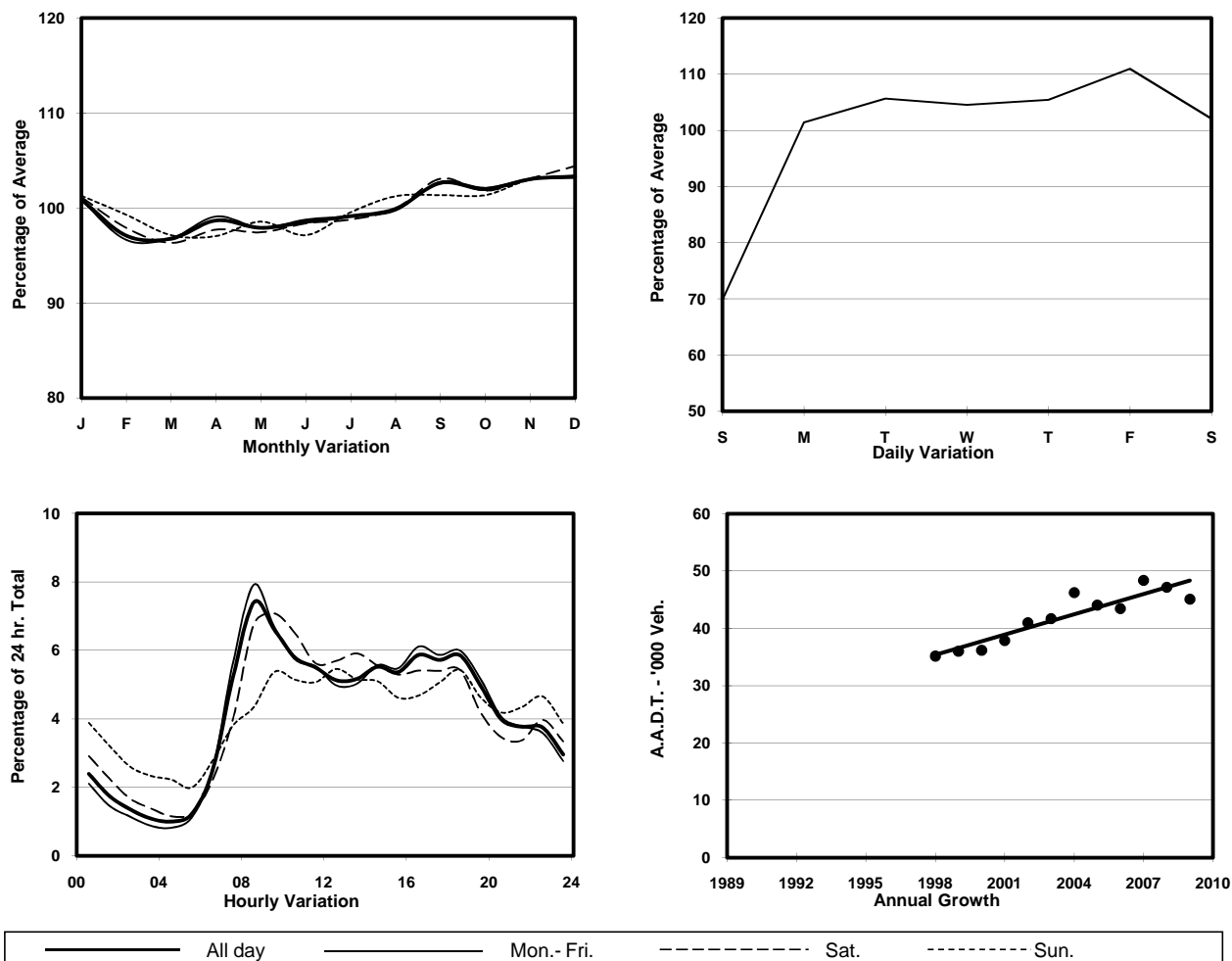
ROAD NETWORK MAJOR

ROAD TYPE DISTRICT DISTRIBUTOR

LINK KWAI TSING RD & TSING YI S BRIDGE (from TSING YI RD to KWAI TAI RD INT)



## 1. TRAFFIC FLOW VARIATION AND GROWTH



## 2. TRAFFIC CHARACTERISTICS (BY DIRECTION)

Parameter	All - Day	Mon. - Fri.	Sat.	Sun.
<b>EAST BOUND</b>				
A.A.D.T.	23540	25210	24350	17070
R 12 / 24 - %	69.5	70.7	69.4	61.4
R 16 / 24 - %	85.5	86.8	83.9	78.2
AM Peak Hour	0800-0900	0800-0900	0900-1000	0900-1000
One-way flow at AM peak hour	1810	2060	1910	1010
T - % (AM)	-	29.1	-	-
PM Peak Hour	1800-1900	1600-1700	1800-1900	1800-1900
One-way flow at PM peak hour	1340	1500	1300	1050
T - % (PM)	-	33.3	-	-
Prop.of commercial vehicles - 16 hr.	-	33.1	-	-
<b>WEST BOUND</b>				
A.A.D.T.	21540	23170	22440	14900
R 12 / 24 - %	68.8	70.5	68	56.8
R 16 / 24 - %	85.9	87.6	83.6	75.9
AM Peak Hour	0800-0900	0800-0900	0900-1000	0900-1000
One-way flow at AM peak hour	1530	1770	1400	700
T - % (AM)	-	28.2	-	-
PM Peak Hour	1600-1700	1800-1900	1600-1700	1600-1700
One-way flow at PM peak hour	1310	1460	1290	750
T - % (PM)	-	28.7	-	-
Prop.of commercial vehicles - 16 hr.	-	35.8	-	-

## 3. OTHER INFORMATION AND COMMENT

**4. Vehicle classification and occupancy - Monday to Friday**

Time		Class of vehicle									
		Motor	Private	Taxi	Private	PLB	Goods veh.		Non	Fr. Bus	
		Cycle	Car		LB		Light	M & H	Fr. Bus	SD	DD
0700-0800	Pro	3.0	12.6	25.6	0.9	8.2	14.4	20.5	10.6	0.0	4.2
	Ocp	1.2	1.4	1.9	4.0	12.6	1.7	1.1	12.3	0.0	54.1
0800-0900	Pro	3.1	23.5	25.6	0.6	5.1	13.4	18.6	6.8	0.0	3.3
	Ocp	1.1	1.5	1.8	6.5	15.3	1.5	1.1	18.9	0.0	55.5
0900-1000	Pro	2.1	22.4	15.7	0.8	5.7	19.6	27.3	3.3	0.0	3.1
	Ocp	1.1	1.3	1.7	2.7	14.6	1.6	1.1	10.1	0.0	23.1
1000-1100	Pro	1.7	12.9	15.6	0.7	7.0	22.7	35.1	0.8	0.0	3.5
	Ocp	1.1	1.4	1.7	2.8	10.7	1.4	1.1	2.0	0.0	19.3
1100-1200	Pro	1.3	13.9	12.1	1.5	5.5	25.0	35.8	1.3	0.0	3.4
	Ocp	1.2	1.4	1.8	3.7	10.3	1.5	1.2	1.6	0.0	18.1
1200-1300	Pro	1.8	17.0	10.7	0.8	7.4	25.7	30.3	2.8	0.0	3.5
	Ocp	1.0	1.6	1.9	1.6	9.1	1.5	1.2	5.5	0.0	20.3
1300-1400	Pro	2.8	16.7	11.1	0.5	7.1	20.9	35.5	2.2	0.0	3.4
	Ocp	1.0	1.7	1.8	2.0	9.5	1.6	1.2	7.5	0.0	22.5
1400-1500	Pro	2.2	15.7	9.9	0.7	5.7	22.8	38.3	1.6	0.0	3.0
	Ocp	1.1	1.6	1.8	3.4	10.8	1.6	1.2	1.9	0.0	19.6
1500-1600	Pro	2.2	15.9	13.7	1.7	6.4	24.2	29.1	2.8	0.0	4.1
	Ocp	1.1	1.6	1.7	5.2	12.1	1.5	1.1	6.2	0.0	18.8
1600-1700	Pro	2.3	17.1	13.5	1.1	5.9	22.2	28.9	5.1	0.0	3.9
	Ocp	1.1	1.4	1.5	4.4	12.3	1.4	1.1	3.8	0.0	27.1
1700-1800	Pro	4.2	18.9	15.1	1.6	7.3	17.7	25.5	5.6	0.0	4.1
	Ocp	1.1	1.8	2.1	2.4	13.6	1.7	1.2	12.2	0.0	35.3
1800-1900	Pro	4.6	30.1	13.1	0.8	6.9	15.5	20.0	4.6	0.0	4.4
	Ocp	1.2	1.5	1.9	5.2	15.8	1.4	1.2	14.5	0.0	50.4
1900-2000	Pro	2.8	26.7	14.1	0.1	10.6	12.2	23.0	6.6	0.0	3.8
	Ocp	1.1	1.5	1.8	2.0	12.8	1.6	1.1	10.9	0.0	39.0
2000-2100	Pro	3.3	28.8	22.2	0.6	8.9	8.7	16.7	6.4	0.0	4.4
	Ocp	1.1	1.8	1.8	3.3	11.3	1.6	1.1	14.1	0.0	29.6
2100-2200	Pro	5.8	26.1	25.3	0.8	7.8	8.4	11.1	8.6	0.1	6.1
	Ocp	1.0	1.4	1.9	3.0	12.2	1.5	1.1	11.9	1.0	16.6
2200-2300	Pro	4.2	29.9	31.9	0.5	9.6	6.9	9.1	2.0	0.0	5.8
	Ocp	1.2	1.7	1.7	2.5	11.4	1.7	1.2	4.1	0.0	22.4
16 hours	Pro	2.8	20.1	16.8	0.9	7.0	18.1	26.1	4.4	0.1	3.9
	Ocp	1.1	1.5	1.8	3.7	12.3	1.5	1.2	11.2	1.0	30.7

**Legend**

- Pro.** Proportion of vehicles in % (Sum may not add up to 100% due to figure rounding)
- Ocp.** Average occupancy of vehicles
- M&H** Medium and Heavy