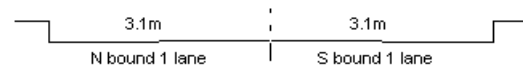


YEAR

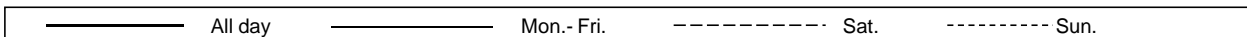
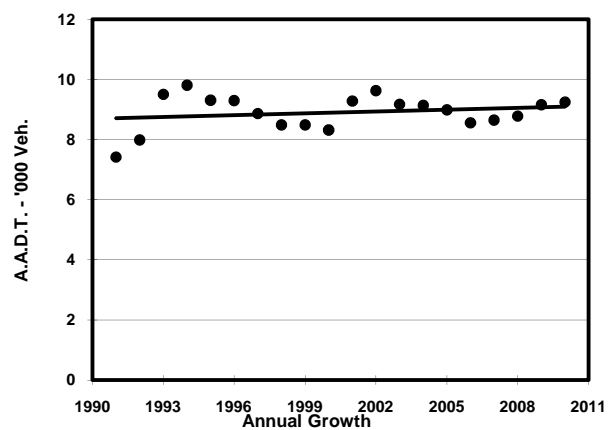
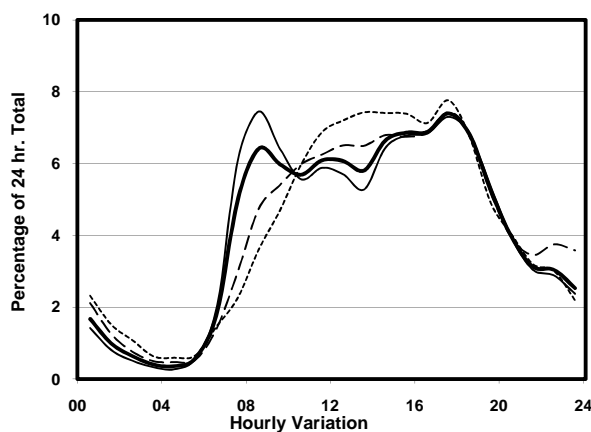
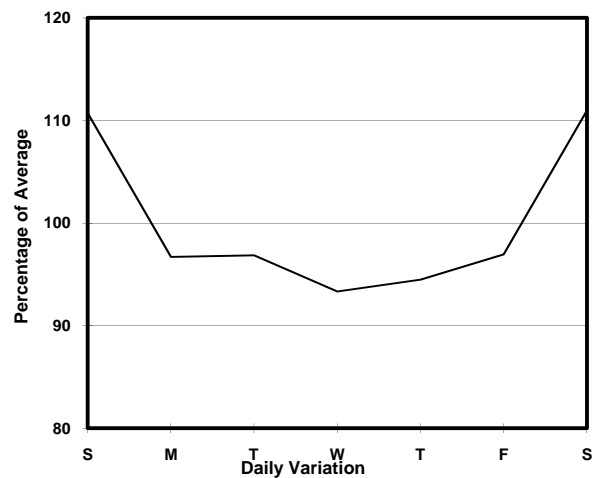
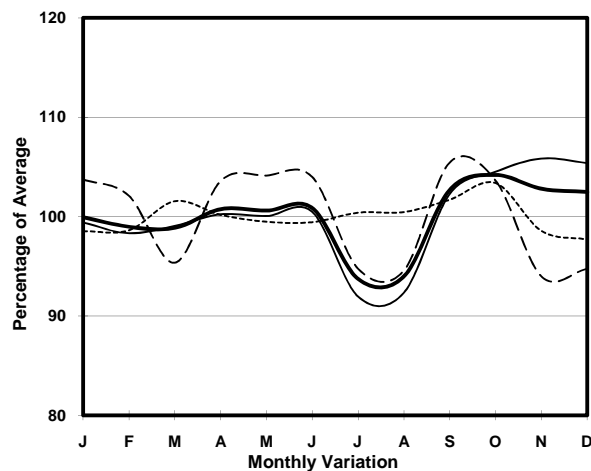
2010

LINK

TAI TAM RD (from CHAI WAN RD to SHEK O RD)

CORE STATION  
ROAD NETWORK  
ROAD TYPE1021  
MAJOR  
PRIMARY DISTRIBUTOR

## 1. TRAFFIC FLOW VARIATION AND GROWTH



## 2. TRAFFIC CHARACTERISTICS (BY DIRECTION)

Parameter	All - Day	Mon. - Fri.	Sat.	Sun.
<b>SOUTH BOUND</b>				
A.A.D.T.	3910	3710	4330	4350
R 12 / 24 - %	73.1	72.8	72.1	75.4
R 16 / 24 - %	90.5	91	89.2	89.7
AM Peak Hour	0900-1000	0900-1000	0900-1000	0900-1000
One-way flow at AM peak hour	240	250	240	230
T - % (AM)	-	3.5	-	-
PM Peak Hour	1600-1700	1800-1900	1600-1700	1600-1700
One-way flow at PM peak hour	250	240	290	300
T - % (PM)	-	4.3	-	-
Prop.of commercial vehicles - 16 hr.	-	6.5	-	-
<b>NORTH BOUND</b>				
A.A.D.T.	5340	5100	5880	5840
R 12 / 24 - %	77.6	79.3	73.8	73.8
R 16 / 24 - %	91.4	92.3	89.6	89.6
AM Peak Hour	0800-0900	0800-0900	0900-1000	0900-1000
One-way flow at AM peak hour	390	450	310	250
T - % (AM)	-	6	-	-
PM Peak Hour	1700-1800	1700-1800	1700-1800	1700-1800
One-way flow at PM peak hour	450	430	480	520
T - % (PM)	-	6.5	-	-
Prop.of commercial vehicles - 16 hr.	-	8.1	-	-

## 3. OTHER INFORMATION AND COMMENT

**4. Vehicle classification and occupancy - Monday to Friday**

Time		Class of vehicle									
		Motor	Private	Taxi	Private	PLB	Goods veh.		Non	Fr. Bus	
		Cycle	Car		LB		Light	M & H	Fr. Bus	SD	DD
0700-0800	Pro	3.3	58.8	14.9	0.8	5.0	6.6	2.5	5.0	0.0	3.1
	Ocp	1.0	1.5	2.2	6.0	16.5	2.5	1.3	17.7	0.0	38.7
0800-0900 Peak hour	Pro	3.6	68.8	10.2	1.2	2.4	6.6	0.6	4.2	0.2	2.4
	Ocp	1.2	1.5	1.6	4.5	11.3	1.8	1.0	6.0	1.0	37.1
0900-1000	Pro	4.0	61.5	10.8	1.7	4.0	14.2	0.6	1.1	0.0	2.0
	Ocp	1.1	1.6	1.8	4.3	8.1	2.2	1.0	11.5	0.0	25.4
1000-1100	Pro	7.1	41.4	7.8	2.1	4.3	29.2	5.0	0.7	0.0	2.3
	Ocp	1.0	1.9	1.6	3.7	8.8	1.6	1.4	35.0	0.0	13.7
1100-1200	Pro	7.1	49.1	6.3	2.4	1.6	24.6	3.2	3.2	0.0	2.6
	Ocp	1.2	1.6	1.9	1.7	10.0	1.7	1.0	10.5	0.0	14.4
1200-1300	Pro	7.0	57.4	9.3	3.9	0.8	12.4	3.1	3.9	0.0	2.3
	Ocp	1.2	1.8	1.5	3.6	14.0	1.9	1.0	12.6	0.0	16.3
1300-1400	Pro	1.9	53.3	6.5	2.8	5.6	18.7	6.5	1.9	0.0	2.8
	Ocp	1.5	1.5	1.9	2.7	13.5	1.9	1.7	5.0	0.0	19.4
1400-1500	Pro	4.6	55.4	7.9	2.6	2.6	19.1	2.0	3.3	0.0	2.3
	Ocp	1.3	1.6	2.1	2.0	10.8	2.0	1.0	9.2	0.0	9.6
1500-1600	Pro	3.7	45.6	16.4	3.7	2.2	18.7	2.2	5.2	0.0	2.1
	Ocp	1.0	1.4	2.2	3.0	14.7	1.6	1.3	12.4	0.0	13.0
1600-1700	Pro	3.9	43.9	11.8	2.6	3.3	25.6	0.0	6.6	0.0	2.3
	Ocp	1.3	1.5	1.7	1.8	12.4	2.1	0.0	7.1	0.0	26.4
1700-1800	Pro	7.1	54.8	16.1	0.6	2.6	12.9	0.0	3.9	0.0	2.1
	Ocp	1.2	1.9	1.8	5.0	16.5	2.7	0.0	10.5	0.0	33.6
1800-1900	Pro	3.6	57.2	18.5	1.2	4.8	8.9	0.0	4.2	0.0	1.6
	Ocp	1.2	1.9	2.3	6.5	12.9	2.0	0.0	5.3	0.0	42.7
1900-2000	Pro	0.8	74.7	12.2	1.5	3.0	3.0	0.0	2.3	0.0	2.5
	Ocp	1.0	1.7	1.7	1.5	13.5	1.5	0.0	6.7	0.0	26.9
2000-2100	Pro	5.7	58.2	25.5	0.0	5.7	0.0	0.0	0.0	0.0	5.0
	Ocp	1.0	1.6	1.9	0.0	11.0	0.0	0.0	0.0	0.0	11.6
2100-2200	Pro	19.7	54.5	10.6	0.0	6.1	3.0	0.0	1.5	0.0	4.5
	Ocp	1.0	1.4	2.0	0.0	5.0	1.0	0.0	3.0	0.0	6.4
2200-2300	Pro	12.6	44.8	19.7	0.0	7.2	9.0	0.0	1.8	0.0	4.9
	Ocp	1.0	1.3	1.9	0.0	9.8	1.8	0.0	4.0	0.0	6.4
16 hours	Pro	5.2	55.5	12.3	1.9	3.5	14.2	1.6	3.3	0.1	2.5
	Ocp	1.1	1.6	1.9	3.2	11.7	1.9	1.3	9.7	1.0	21.8

**Legend**

- Pro.** Proportion of vehicles in % (Sum may not add up to 100% due to figure rounding)
- Ocp.** Average occupancy of vehicles
- M&H** Medium and Heavy