

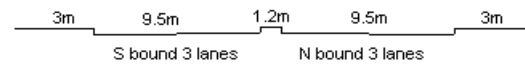
YEAR 2010

CORE STATION 3014

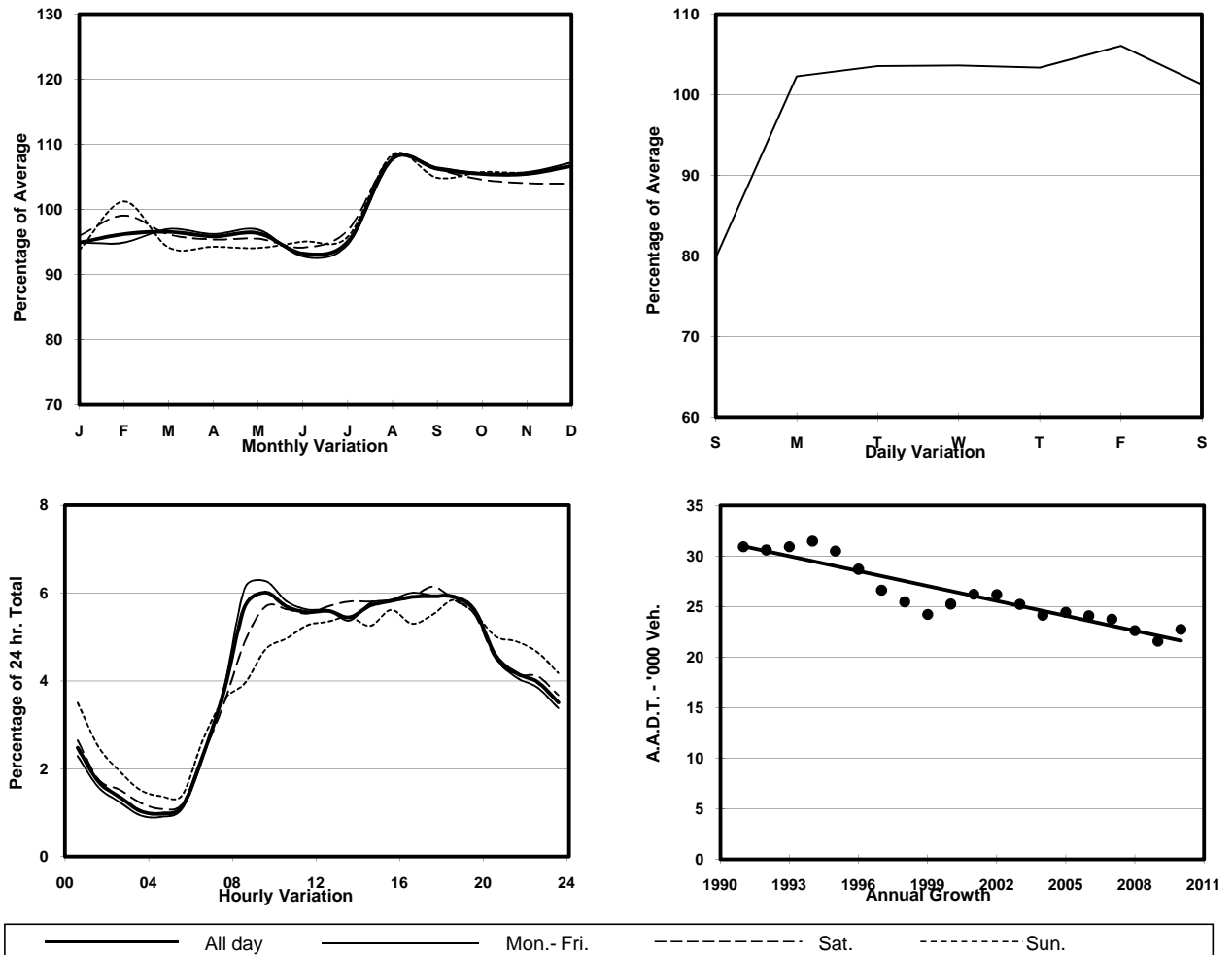
ROAD NETWORK MAJOR

ROAD TYPE DISTRICT DISTRIBUTOR

LINK MA TAU WAI RD & TO KWA WAN RD (from SAN LAU ST & BAILEY ST to CHI KIANG ST)



1. TRAFFIC FLOW VARIATION AND GROWTH



2. TRAFFIC CHARACTERISTICS (BY DIRECTION)

Parameter	All - Day	Mon. - Fri.	Sat.	Sun.
SOUTH BOUND				
A.A.D.T.	16470	17420	16700	12740
R 12 / 24 - %	68.4	69.6	67.6	61.2
R 16 / 24 - %	85.9	86.9	84.9	80.8
AM Peak Hour	0900-1000	0800-0900	0900-1000	0900-1000
One-way flow at AM peak hour	1060	1210	1010	590
T - % (AM)	-	25.6	-	-
PM Peak Hour	1800-1900	1800-1900	1700-1800	1800-1900
One-way flow at PM peak hour	980	1040	1060	740
T - % (PM)	-	15.3	-	-
Prop.of commercial vehicles - 16 hr.	-	18.3	-	-
NORTH BOUND				
A.A.D.T.	6270	6460	6540	5560
R 12 / 24 - %	63.7	64.4	63.1	60.1
R 16 / 24 - %	84.1	84.7	83.7	81.1
AM Peak Hour	0900-1000	0900-1000	0900-1000	0900-1000
One-way flow at AM peak hour	310	330	310	270
T - % (AM)	-	37.3	-	-
PM Peak Hour	1600-1700	1600-1700	1600-1700	1800-1900
One-way flow at PM peak hour	400	420	390	330
T - % (PM)	-	23	-	-
Prop.of commercial vehicles - 16 hr.	-	27.3	-	-

3. OTHER INFORMATION AND COMMENT

4. Vehicle classification and occupancy - Monday to Friday

Time		Class of vehicle									
		Motor	Private	Taxi	Private	PLB	Goods veh.		Non	Fr. Bus	
		Cycle	Car		LB		Light	M & H	Fr. Bus	SD	DD
0700-0800	Pro	1.6	4.4	20.8	4.4	20.8	17.0	2.2	3.3	0.0	25.5
	Ocp	1.0	1.3	1.9	5.8	8.4	1.2	1.8	5.3	0.0	22.3
0800-0900	Pro	2.8	18.2	26.0	0.6	9.0	13.9	1.9	11.7	0.2	15.8
	Ocp	1.1	1.4	2.1	3.5	9.1	1.4	1.3	14.1	14.5	24.8
0900-1000 Peak hour	Pro	2.3	23.8	22.7	0.6	10.2	17.9	2.6	5.4	0.1	14.6
	Ocp	1.0	1.5	1.9	2.0	6.3	1.5	1.4	8.7	14.0	15.6
1000-1100	Pro	2.4	18.8	21.8	1.6	11.0	23.4	3.5	5.4	0.1	12.0
	Ocp	1.1	1.5	1.7	2.3	5.8	1.4	1.7	5.1	7.0	11.9
1100-1200	Pro	2.7	19.2	20.6	0.7	10.8	22.9	5.1	6.1	0.0	12.0
	Ocp	1.0	1.4	1.8	2.0	6.4	1.4	1.5	16.2	0.0	15.3
1200-1300	Pro	0.9	14.3	31.4	1.5	10.7	19.5	2.1	7.9	0.0	11.7
	Ocp	1.0	1.5	1.6	4.0	5.5	1.5	2.1	15.4	0.0	12.6
1300-1400	Pro	2.8	15.6	21.7	0.4	9.2	28.1	2.5	5.3	0.0	14.4
	Ocp	1.1	1.4	1.6	3.0	7.4	1.7	2.4	15.9	0.0	11.8
1400-1500	Pro	4.0	16.4	25.4	0.9	12.1	23.6	1.6	3.4	0.0	12.6
	Ocp	1.1	1.4	1.7	4.0	5.9	1.8	2.2	14.3	0.0	11.0
1500-1600	Pro	3.3	22.2	24.3	0.9	9.5	20.7	4.4	3.3	0.0	11.4
	Ocp	1.1	1.4	1.7	1.3	8.2	1.4	1.7	17.2	0.0	14.6
1600-1700	Pro	1.9	19.4	19.1	1.3	13.6	24.9	2.6	3.2	0.2	13.8
	Ocp	1.0	1.5	1.5	1.8	7.7	1.5	1.8	16.3	8.0	15.7
1700-1800	Pro	2.4	24.9	24.3	0.6	8.8	19.7	0.0	4.9	0.2	14.2
	Ocp	1.0	1.4	1.6	4.5	8.6	1.4	0.0	15.7	13.5	16.9
1800-1900	Pro	3.0	31.0	25.6	0.3	7.8	15.1	0.6	2.4	0.1	14.0
	Ocp	1.3	1.4	1.8	4.0	9.8	1.4	1.5	13.6	14.0	28.2
1900-2000	Pro	3.5	27.8	27.5	0.6	17.9	6.1	0.6	3.2	0.2	12.6
	Ocp	1.3	1.6	2.0	4.5	8.9	1.6	2.5	19.8	4.5	22.1
2000-2100	Pro	2.3	22.7	35.2	0.4	18.5	3.8	1.5	1.1	0.1	14.5
	Ocp	1.2	1.6	1.5	4.0	7.9	1.3	1.3	1.3	16.0	13.3
2100-2200	Pro	3.5	18.5	36.6	1.3	18.1	4.4	0.4	0.0	0.0	17.0
	Ocp	1.1	2.0	1.5	1.7	7.7	1.5	1.0	0.0	0.0	10.8
2200-2300	Pro	3.2	16.1	40.5	0.0	17.0	2.8	0.0	0.9	0.0	19.4
	Ocp	1.1	1.6	1.5	0.0	7.2	1.5	0.0	1.0	0.0	10.8
16 hours	Pro	2.7	20.2	26.0	0.9	12.3	17.1	2.0	4.4	0.1	14.2
	Ocp	1.1	1.5	1.7	3.4	7.5	1.5	1.7	13.3	10.7	16.4

Legend

- Pro.** Proportion of vehicles in % (Sum may not add up to 100% due to figure rounding)
- Ocp.** Average occupancy of vehicles
- M&H** Medium and Heavy