

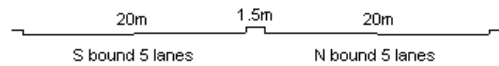
YEAR 2010

CORE STATION 5030

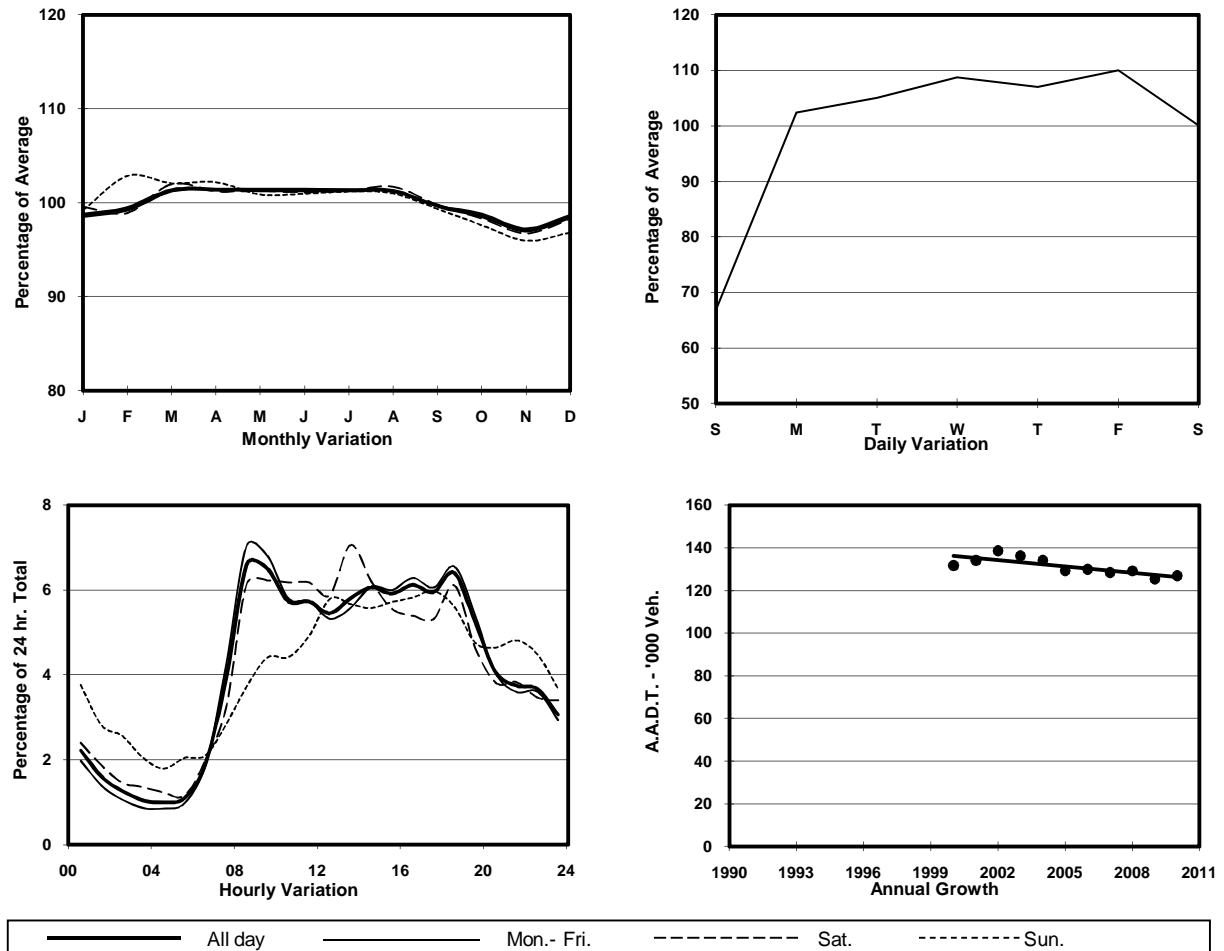
ROAD NETWORK MAJOR

ROAD TYPE URBAN TRUNK ROAD

LINK KWAI CHUNG RD (from PMH INT SLIP RD TO KWAI CHUNG RD N-B to TSUEN WAN RD)



1. TRAFFIC FLOW VARIATION AND GROWTH



2. TRAFFIC CHARACTERISTICS (BY DIRECTION)

Parameter	All - Day	Mon. - Fri.	Sat.	Sun.
SOUTH BOUND				
A.A.D.T.	60070	65530	61300	39040
R 12 / 24 - %	73.5	74.6	72.5	64.9
R 16 / 24 - %	88.1	89.2	86.3	81.7
AM Peak Hour	0800-0900	0800-0900	0900-1000	0900-1000
One-way flow at AM peak hour	4440	5200	4300	1960
T - % (AM)	-	18.3	-	-
PM Peak Hour	1800-1900	1800-1900	1800-1900	1700-1800
One-way flow at PM peak hour	3850	4360	3380	2270
T - % (PM)	-	15.3	-	-
Prop.of commercial vehicles - 16 hr.	-	19.5	-	-
NORTH BOUND				
A.A.D.T.	66830	72170	67930	47250
R 12 / 24 - %	67.2	68.6	66.7	56.8
R 16 / 24 - %	85.7	87.1	84.2	77.1
AM Peak Hour	0900-1000	0900-1000	0800-0900	0900-1000
One-way flow at AM peak hour	4130	4770	3980	1850
T - % (AM)	-	18.9	-	-
PM Peak Hour	1800-1900	1800-1900	1800-1900	1700-1800
One-way flow at PM peak hour	4270	4660	4510	2890
T - % (PM)	-	16	-	-
Prop.of commercial vehicles - 16 hr.	-	18.5	-	-

3. OTHER INFORMATION AND COMMENT

4. Vehicle classification and occupancy - Monday to Friday

Time		Class of vehicle									
		Motor	Private	Taxi	Private	PLB	Goods veh.		Non	Fr. Bus	
		Cycle	Car		LB		Light	M & H	Fr. Bus	SD	DD
0700-0800	Pro	6.0	22.0	13.8	0.7	4.4	27.2	13.7	6.8	0.0	5.4
	Ocp	1.1	1.5	2.2	2.9	12.0	1.5	1.3	17.2	0.0	54.4
0800-0900 Peak hour	Pro	5.4	33.2	13.8	0.3	4.9	24.4	10.5	4.0	0.1	3.5
	Ocp	1.1	1.3	2.0	7.5	13.1	1.6	1.4	23.8	1.0	57.5
0900-1000	Pro	3.5	28.2	11.1	0.4	3.0	34.0	14.7	1.2	0.0	3.8
	Ocp	1.1	1.3	1.8	2.2	10.3	1.6	1.4	12.1	0.0	32.0
1000-1100	Pro	3.1	21.3	10.0	0.3	3.1	40.9	16.7	1.0	0.0	3.7
	Ocp	1.1	1.4	2.0	3.2	9.4	1.5	1.5	12.3	0.0	26.2
1100-1200	Pro	3.3	24.2	9.0	0.4	2.2	40.6	16.2	0.8	0.1	3.4
	Ocp	1.0	1.2	1.9	1.9	8.8	1.5	1.4	7.5	1.0	27.9
1200-1300	Pro	2.1	23.4	6.7	0.7	2.2	42.7	17.0	1.8	0.1	3.3
	Ocp	1.1	1.3	1.9	4.0	8.7	1.5	1.4	11.5	1.0	31.5
1300-1400	Pro	2.6	25.2	7.2	0.5	3.1	41.2	15.3	1.3	0.0	3.8
	Ocp	1.1	1.3	1.9	3.1	8.5	1.6	1.4	12.5	0.0	32.3
1400-1500	Pro	2.7	22.5	9.0	0.2	1.5	44.4	15.5	1.1	0.0	3.3
	Ocp	1.0	1.4	2.0	3.0	9.6	1.5	1.5	2.5	0.0	37.2
1500-1600	Pro	2.9	25.9	7.6	0.5	2.1	40.1	15.8	1.3	0.0	3.6
	Ocp	1.0	1.5	2.1	4.4	11.1	1.5	1.4	16.1	0.0	36.8
1600-1700	Pro	2.5	26.9	9.5	1.1	2.6	36.6	14.8	2.3	0.1	3.7
	Ocp	1.1	1.4	1.7	2.9	9.7	1.6	1.4	6.6	1.0	35.5
1700-1800	Pro	4.6	30.2	10.2	0.9	2.8	33.2	12.2	2.1	0.0	3.9
	Ocp	1.1	1.4	1.7	3.1	12.9	1.5	1.5	11.5	0.0	50.5
1800-1900	Pro	5.2	38.4	8.6	0.3	5.6	26.2	9.2	3.1	0.0	3.4
	Ocp	1.1	1.3	1.9	2.3	14.3	1.6	1.5	17.6	0.0	66.3
1900-2000	Pro	3.9	46.5	10.3	0.1	7.3	18.0	7.6	2.5	0.0	3.8
	Ocp	1.1	1.5	2.0	2.0	13.5	1.4	1.2	22.7	0.0	48.6
2000-2100	Pro	4.4	41.6	15.1	0.2	7.7	16.4	8.4	2.0	0.0	4.3
	Ocp	1.1	1.4	2.0	1.3	11.0	1.5	1.2	8.5	0.0	37.7
2100-2200	Pro	4.1	43.4	16.4	0.1	8.3	12.1	8.4	1.8	0.0	5.4
	Ocp	1.1	1.3	1.3	2.0	11.3	1.4	1.1	10.4	0.0	33.3
2200-2300	Pro	4.1	43.1	20.3	0.0	9.4	9.2	6.2	1.8	0.0	6.0
	Ocp	1.2	1.4	1.9	0.0	11.1	1.5	1.1	9.5	0.0	35.2
16 hours	Pro	3.7	30.4	10.7	0.4	4.1	31.7	12.9	2.1	0.1	3.9
	Ocp	1.1	1.4	1.9	3.3	11.5	1.5	1.4	15.0	1.0	40.7

Legend

- Pro.** Proportion of vehicles in % (Sum may not add up to 100% due to figure rounding)
- Ocp.** Average occupancy of vehicles
- M&H** Medium and Heavy