

YEAR 2010

CORE STATION 5037

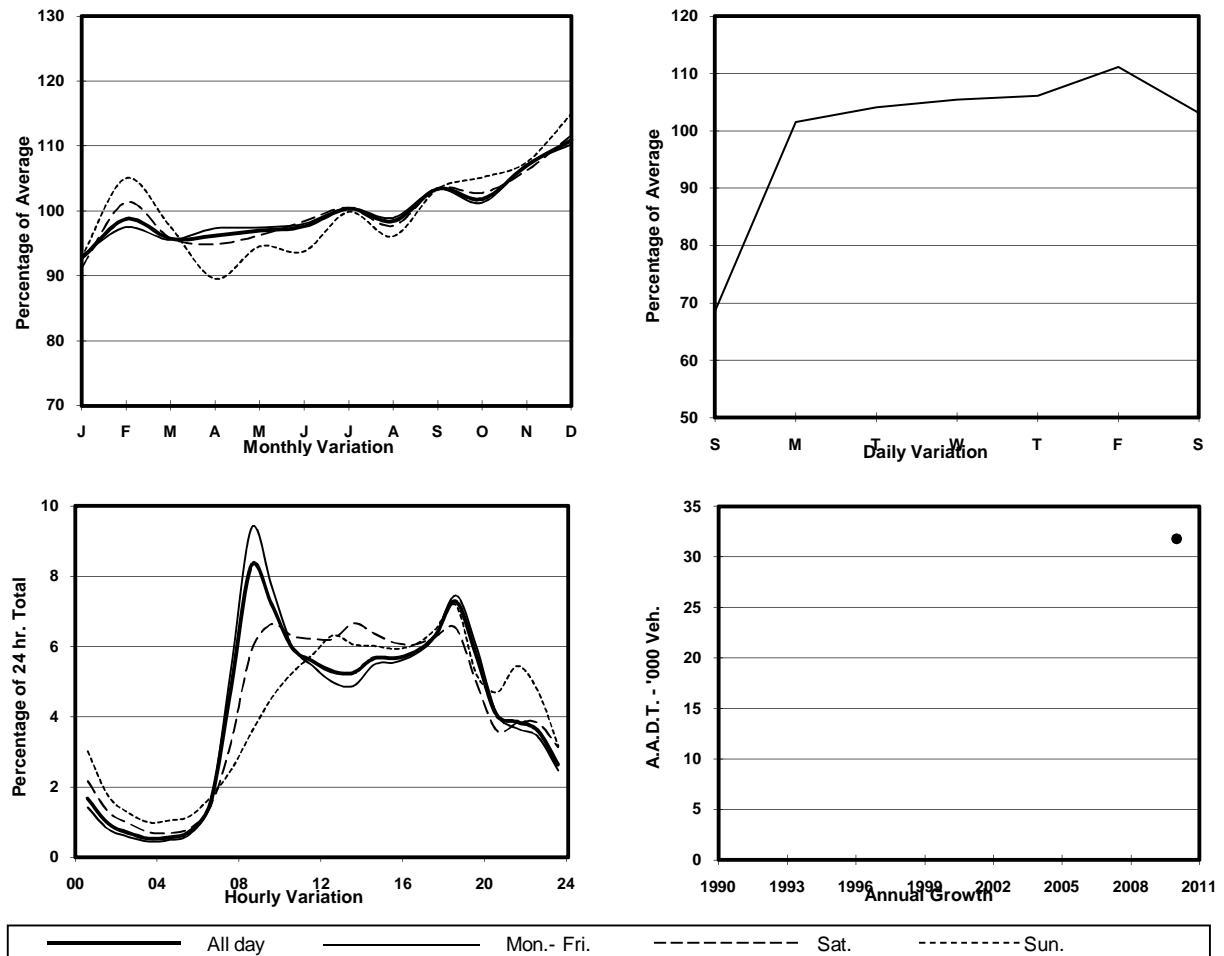
ROAD NETWORK MAJOR

ROAD TYPE EXPRESSWAY

LINK EAGLE'S NEST TUNNEL (from TOLL PLAZA to SOUTH PORTAL)



## 1. TRAFFIC FLOW VARIATION AND GROWTH



## 2. TRAFFIC CHARACTERISTICS (BY DIRECTION)

Parameter	All - Day	Mon. - Fri.	Sat.	Sun.
<b>SOUTH BOUND</b>				
A.A.D.T.	15600	16740	16360	11000
R 12 / 24 - %	78.5	80.1	76	69.8
R 16 / 24 - %	91.9	92.7	90.4	87.7
AM Peak Hour	0800-0900	0800-0900	0900-1000	0900-1000
One-way flow at AM peak hour	1750	2150	1310	590
T - % (AM)	-	11.5	-	-
PM Peak Hour	1800-1900	1800-1900	1800-1900	1800-1900
One-way flow at PM peak hour	970	1020	980	850
T - % (PM)	-	15.8	-	-
Prop.of commercial vehicles - 16 hr.	-	20.6	-	-
<b>NORTH BOUND</b>				
A.A.D.T.	16190	17460	16850	11140
R 12 / 24 - %	68.2	68.9	69.1	61.6
R 16 / 24 - %	89.4	90.5	87.1	83.9
AM Peak Hour	0900-1000	0900-1000	0900-1000	0900-1000
One-way flow at AM peak hour	930	1060	900	420
T - % (AM)	-	23.5	-	-
PM Peak Hour	1800-1900	1800-1900	1800-1900	1800-1900
One-way flow at PM peak hour	1350	1530	1180	740
T - % (PM)	-	12.8	-	-
Prop.of commercial vehicles - 16 hr.	-	20.6	-	-

## 3. OTHER INFORMATION AND COMMENT

**4. Vehicle classification and occupancy - Monday to Friday**

Time		Class of vehicle									
		Motor	Private	Taxi	Private	PLB	Goods veh.		Non	Fr. Bus	
		Cycle	Car		LB		Light	M & H	Fr. Bus	SD	DD
0700-0800	Pro	2.4	27.5	23.5	1.3	0.0	15.8	24.3	5.1	0.0	0.1
	Ocp	1.0	1.5	2.4	11.8	0.0	1.6	1.4	12.3	0.0	13.5
0800-0900	Pro	0.9	49.7	18.4	0.7	0.0	14.1	14.0	2.3	0.0	0.1
	Ocp	1.1	1.5	2.0	3.5	0.0	1.6	1.3	24.4	0.0	29.8
0900-1000	Pro	1.2	40.2	17.6	0.1	0.0	20.9	18.0	2.0	0.0	0.1
	Ocp	1.4	1.4	1.7	1.0	0.0	1.5	1.3	25.9	0.0	12.8
1000-1100	Pro	0.2	32.5	16.5	0.8	0.0	22.8	25.6	1.6	0.0	0.1
	Ocp	2.0	1.5	1.8	2.3	0.0	1.5	1.3	8.3	0.0	1.0
1100-1200	Pro	0.4	34.0	12.7	1.3	0.0	26.9	22.9	1.8	0.0	0.1
	Ocp	1.5	1.6	2.0	4.5	0.0	1.5	1.3	2.4	0.0	1.0
1200-1300	Pro	1.1	31.7	13.9	0.5	0.0	25.4	26.2	1.1	0.0	0.1
	Ocp	1.0	1.4	2.0	2.0	0.0	1.4	1.3	3.5	0.0	1.0
1300-1400	Pro	1.5	33.3	10.0	1.0	0.0	27.5	25.5	1.2	0.0	0.0
	Ocp	1.0	1.5	2.1	2.0	0.0	1.5	1.3	5.4	0.0	0.0
1400-1500	Pro	0.9	33.2	9.2	0.7	0.0	29.3	25.9	0.9	0.0	0.1
	Ocp	1.0	1.6	1.9	2.7	0.0	1.5	1.3	7.5	0.0	1.0
1500-1600	Pro	1.8	35.3	10.3	0.4	0.0	25.1	23.8	3.3	0.1	0.1
	Ocp	1.4	1.5	1.9	1.5	0.0	1.6	1.3	25.4	1.0	1.0
1600-1700	Pro	0.6	38.5	13.5	1.3	0.0	21.9	22.5	1.7	0.0	0.1
	Ocp	1.0	1.4	2.0	2.6	0.0	1.6	1.3	3.4	0.0	1.0
1700-1800	Pro	1.4	39.5	14.0	0.7	0.0	25.2	17.4	1.8	0.0	0.1
	Ocp	1.2	1.4	2.0	2.0	0.0	1.7	1.3	8.4	0.0	8.8
1800-1900	Pro	2.1	61.7	9.5	0.0	0.0	12.5	11.8	2.3	0.0	0.1
	Ocp	1.1	1.5	2.3	0.0	0.0	1.4	1.3	21.5	0.0	37.9
1900-2000	Pro	0.9	65.1	11.8	0.2	0.0	10.2	10.7	1.2	0.0	0.1
	Ocp	1.0	1.5	2.0	6.0	0.0	1.4	1.2	7.4	0.0	15.5
2000-2100	Pro	1.1	66.8	15.1	0.3	0.0	6.5	9.5	0.8	0.1	0.1
	Ocp	1.0	1.4	2.1	8.0	0.0	1.5	1.2	7.7	1.0	6.8
2100-2200	Pro	1.5	56.2	15.8	0.4	0.0	8.1	16.5	1.5	0.0	0.1
	Ocp	1.8	1.4	2.1	1.0	0.0	1.3	1.4	5.8	0.0	1.0
2200-2300	Pro	0.8	53.2	29.2	0.4	0.0	7.9	7.5	1.1	0.0	0.1
	Ocp	1.5	1.7	2.1	1.0	0.0	1.2	1.3	7.7	0.0	1.0
16 hours	Pro	1.1	43.9	14.8	0.6	0.0	19.0	18.7	1.9	0.1	0.1
	Ocp	1.2	1.5	2.0	3.8	0.0	1.5	1.3	14.9	1.0	12.7

**Legend**

**Pro.** Proportion of vehicles in % (Sum may not add up to 100% due to figure rounding)  
**Ocp.** Average occupancy of vehicles  
**M&H** Medium and Heavy