

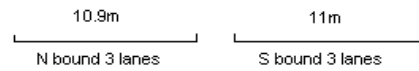
YEAR 2010

CORE STATION 5038

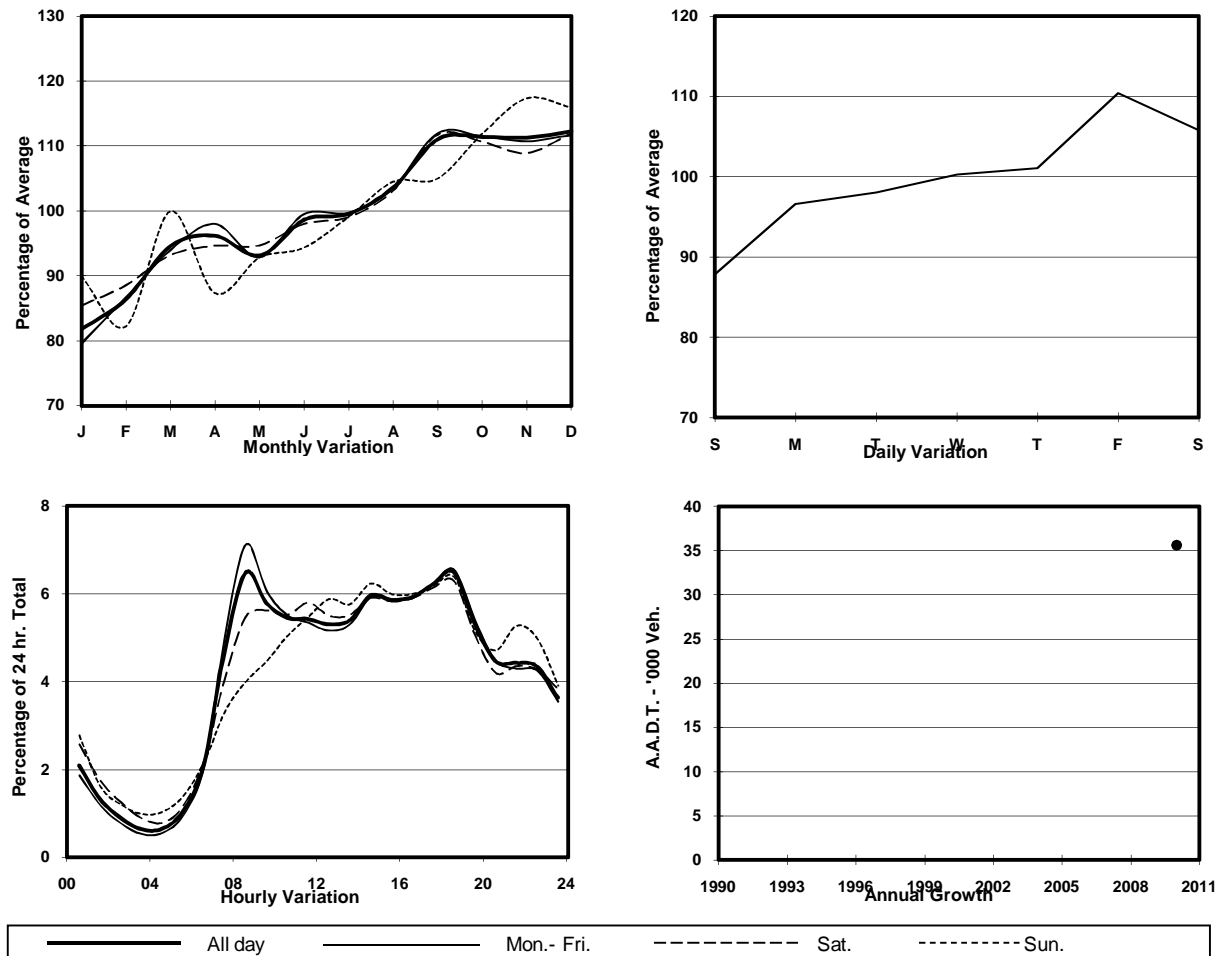
ROAD NETWORK MAJOR

ROAD TYPE EXPRESSWAY

LINK NAM WAN TUNNEL (from EAST TSING YI VIADUCT to CHEUNG TSING HIGHWAY)



1. TRAFFIC FLOW VARIATION AND GROWTH



2. TRAFFIC CHARACTERISTICS (BY DIRECTION)

Parameter	All - Day	Mon. - Fri.	Sat.	Sun.
EAST BOUND				
A.A.D.T.	19780	20070	21040	18130
R 12 / 24 - %	70.1	71.3	68.4	65
R 16 / 24 - %	87.6	88.3	86.1	85.6
AM Peak Hour	0800-0900	0800-0900	0800-0900	0900-1000
One-way flow at AM peak hour	1420	1620	1230	780
T - % (AM)	-	25.2	-	-
PM Peak Hour	1800-1900	1800-1900	1800-1900	1800-1900
One-way flow at PM peak hour	1330	1350	1390	1250
T - % (PM)	-	15.8	-	-
Prop.of commercial vehicles - 16 hr.	-	21.2	-	-
WEST BOUND				
A.A.D.T.	15820	16350	16780	13020
R 12 / 24 - %	67.7	68.4	66.7	64.5
R 16 / 24 - %	87.5	88.6	84.8	83.9
AM Peak Hour	0900-1000	0800-0900	0900-1000	0900-1000
One-way flow at AM peak hour	900	980	930	610
T - % (AM)	-	33.3	-	-
PM Peak Hour	1700-1800	1700-1800	1700-1800	1700-1800
One-way flow at PM peak hour	1010	1070	1040	760
T - % (PM)	-	29.3	-	-
Prop.of commercial vehicles - 16 hr.	-	30.8	-	-

3. OTHER INFORMATION AND COMMENT

4. Vehicle classification and occupancy - Monday to Friday

Time		Class of vehicle									
		Motor	Private	Taxi	Private	PLB	Goods veh.		Non	Fr. Bus	
		Cycle	Car		LB		Light	M & H	Fr. Bus	SD	DD
0700-0800	Pro	2.3	45.6	18.1	0.5	0.0	11.1	18.7	3.8	0.1	0.1
	Ocp	1.0	1.6	2.2	3.5	0.0	1.8	1.1	20.1	11.5	13.3
0800-0900 Peak hour	Pro	1.1	50.7	12.9	0.1	0.0	7.1	20.1	8.0	0.1	0.1
	Ocp	1.4	1.5	2.3	1.0	0.0	1.7	1.1	35.8	13.5	12.8
0900-1000	Pro	1.5	46.0	12.7	0.9	0.0	13.6	20.3	5.1	0.1	0.1
	Ocp	1.1	1.5	2.3	3.4	0.0	1.7	1.2	16.4	10.3	9.3
1000-1100	Pro	0.6	43.5	12.7	0.6	0.0	13.1	24.6	4.8	0.1	0.1
	Ocp	1.0	1.6	2.3	3.3	0.0	1.4	1.1	7.7	7.7	7.8
1100-1200	Pro	0.4	44.3	12.8	0.9	0.0	12.4	25.4	3.7	0.1	0.1
	Ocp	1.0	1.7	2.5	3.0	0.0	1.4	1.1	10.2	4.0	9.5
1200-1300	Pro	0.2	38.7	19.4	0.4	0.0	11.0	23.9	6.3	0.1	0.1
	Ocp	1.0	1.7	2.5	1.0	0.0	1.5	1.2	14.7	10.2	9.1
1300-1400	Pro	0.2	38.6	16.7	0.6	0.0	14.1	23.5	6.3	0.1	0.1
	Ocp	1.0	1.8	2.3	6.3	0.0	1.5	1.1	9.6	6.0	11.1
1400-1500	Pro	0.9	40.0	18.3	0.7	0.0	12.8	22.1	5.1	0.1	0.1
	Ocp	1.0	1.8	2.5	3.5	0.0	1.6	1.1	13.4	11.0	13.2
1500-1600	Pro	0.0	38.1	21.2	0.2	0.0	11.3	24.4	4.8	0.1	0.1
	Ocp	0.0	1.7	2.5	1.0	0.0	1.7	1.1	13.0	10.2	13.0
1600-1700	Pro	0.8	38.4	18.4	0.8	0.0	10.7	23.2	7.7	0.1	0.1
	Ocp	1.0	1.8	2.7	4.5	0.0	1.7	1.1	14.2	13.5	15.7
1700-1800	Pro	1.3	46.5	13.2	0.6	0.0	10.4	22.1	5.9	0.1	0.1
	Ocp	1.3	1.8	2.7	1.3	0.0	1.8	1.0	13.8	11.0	11.5
1800-1900	Pro	1.3	52.0	15.8	0.5	0.0	8.0	14.4	8.1	0.1	0.1
	Ocp	1.0	1.6	2.6	5.7	0.0	1.4	1.1	25.8	15.3	15.4
1900-2000	Pro	1.1	55.0	15.7	0.0	0.0	5.8	12.0	10.5	0.1	0.1
	Ocp	1.0	1.7	2.5	0.0	0.0	1.5	1.1	26.6	13.0	12.1
2000-2100	Pro	0.5	56.0	19.5	0.5	0.0	3.8	13.2	6.6	0.1	0.1
	Ocp	1.0	1.7	2.4	1.5	0.0	1.5	1.1	18.5	11.8	14.8
2100-2200	Pro	0.7	55.0	26.6	0.2	0.0	3.9	9.4	4.1	0.1	0.1
	Ocp	1.3	1.7	2.4	3.0	0.0	1.4	1.0	16.6	14.3	16.2
2200-2300	Pro	0.8	60.2	27.0	0.3	0.0	1.6	7.1	3.1	0.1	0.1
	Ocp	1.0	1.7	2.2	1.0	0.0	1.5	1.0	9.8	10.0	14.7
16 hours	Pro	0.9	46.6	17.2	0.5	0.0	9.6	19.3	6.1	0.1	0.1
	Ocp	1.1	1.7	2.4	3.3	0.0	1.6	1.1	19.1	10.9	12.5

Legend

- Pro.** Proportion of vehicles in % (Sum may not add up to 100% due to figure rounding)
- Ocp.** Average occupancy of vehicles
- M&H** Medium and Heavy