

YEAR

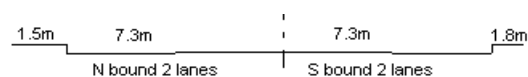
2010

LINK

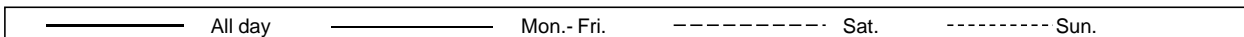
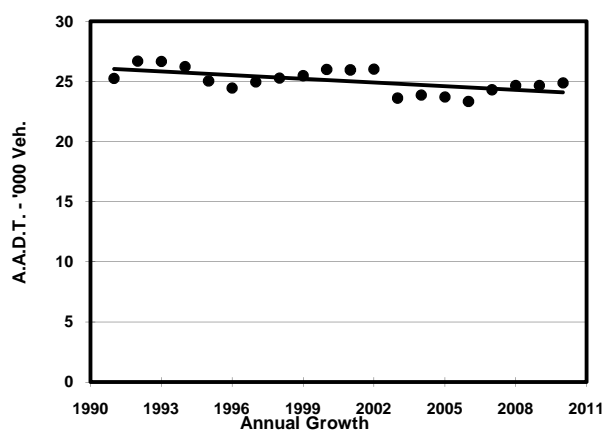
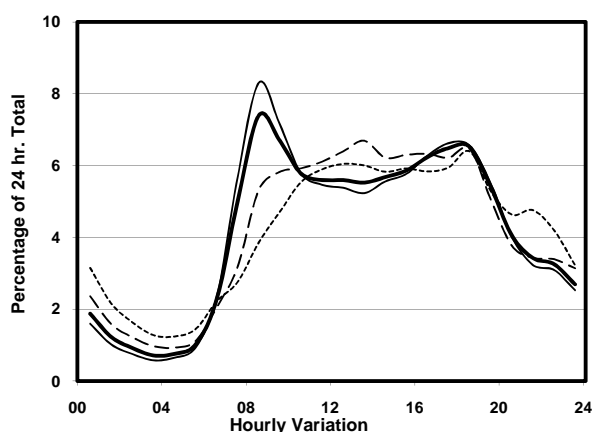
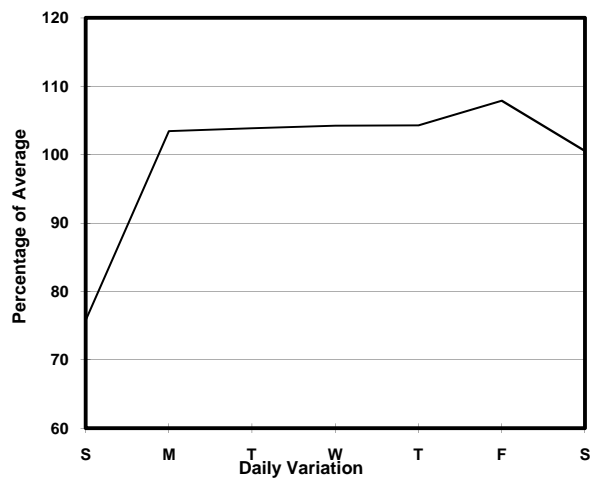
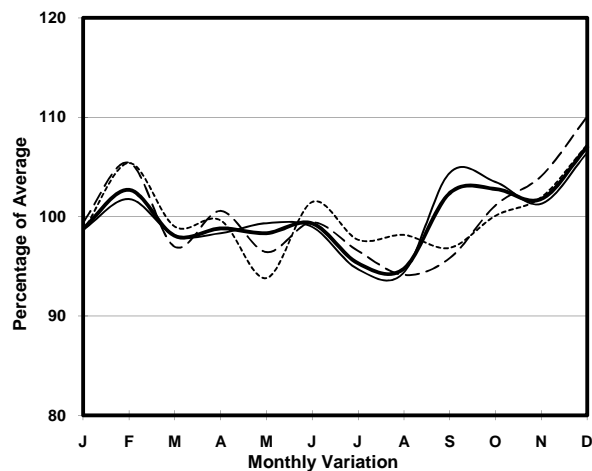
POK FU LAM RD (from SASSOON RD to CHI FU RD)

CORE STATION  
ROAD NETWORK  
ROAD TYPE

1005  
MAJOR  
PRIMARY DISTRIBUTOR



### 1. TRAFFIC FLOW VARIATION AND GROWTH



### 2. TRAFFIC CHARACTERISTICS (BY DIRECTION)

Parameter	All - Day	Mon. - Fri.	Sat.	Sun.
<b>SOUTH BOUND</b>				
A.A.D.T.	12790	13540	12970	9990
R 12 / 24 - %	71	72.2	70.2	64.4
R 16 / 24 - %	88.5	89.6	86.5	83.7
AM Peak Hour	0900-1000	0900-1000	0900-1000	0900-1000
One-way flow at AM peak hour	840	950	750	450
T - % (AM)	-	-	-	-
PM Peak Hour	1600-1700	1800-1900	1600-1700	1600-1700
One-way flow at PM peak hour	820	880	870	610
T - % (PM)	-	-	-	-
Prop.of commercial vehicles - 16 hr.	-	-	-	-
<b>NORTH BOUND</b>				
A.A.D.T.	12100	12880	12290	9130
R 12 / 24 - %	73.8	75.4	71.9	65.1
R 16 / 24 - %	88.6	89.7	86.8	83.6
AM Peak Hour	0800-0900	0800-0900	0800-0900	0900-1000
One-way flow at AM peak hour	1070	1290	730	460
T - % (AM)	-	-	-	-
PM Peak Hour	1700-1800	1700-1800	1800-1900	1800-1900
One-way flow at PM peak hour	820	890	830	620
T - % (PM)	-	-	-	-
Prop.of commercial vehicles - 16 hr.	-	-	-	-

### 3. OTHER INFORMATION AND COMMENT