

YEAR

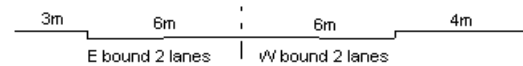
2010

LINK

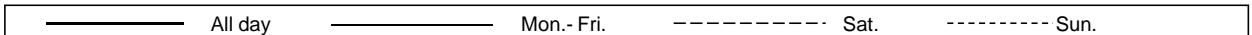
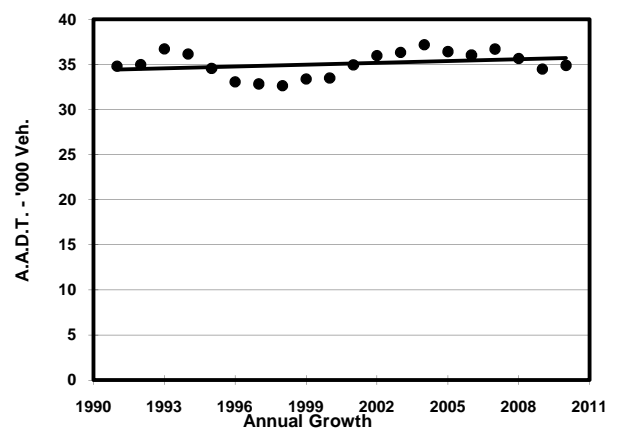
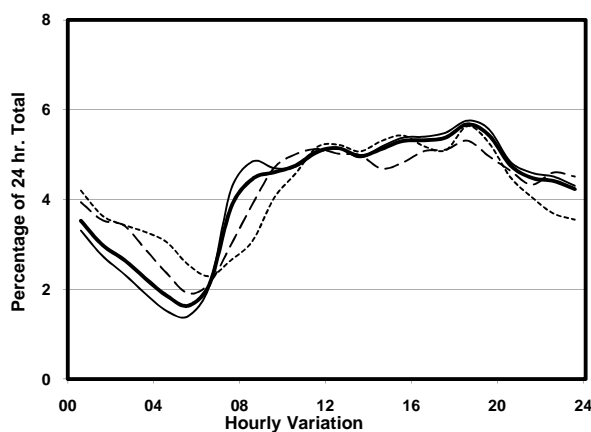
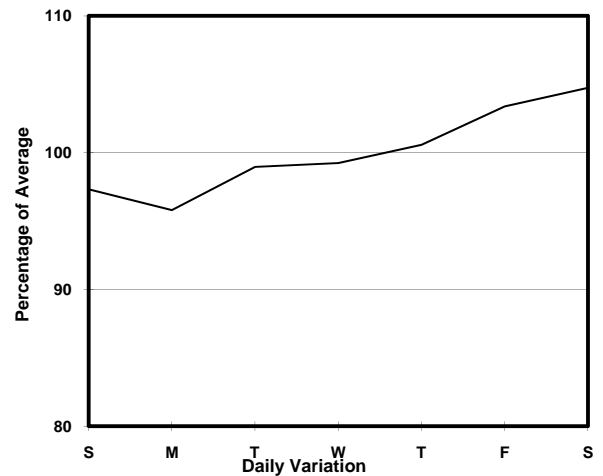
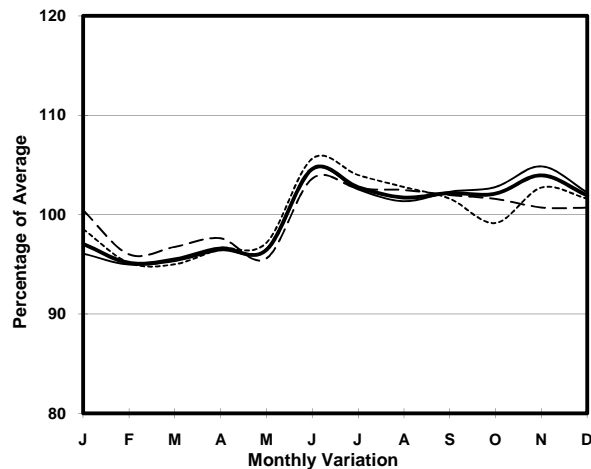
AUSTIN RD (from COX'S RD to CHATHAM RD S)

CORE STATION
ROAD NETWORK
ROAD TYPE

3013
MAJOR
DISTRICT DISTRIBUTOR



1. TRAFFIC FLOW VARIATION AND GROWTH



2. TRAFFIC CHARACTERISTICS (BY DIRECTION)

Parameter	All - Day	Mon. - Fri.	Sat.	Sun.
EAST BOUND				
A.A.D.T.	12300	12440	12660	11440
R 12 / 24 - %	59.7	60.9	57.6	55.4
R 16 / 24 - %	79.2	80.4	76.8	75.4
AM Peak Hour	0800-0900	0800-0900	0900-1000	0900-1000
One-way flow at AM peak hour	640	710	660	420
T - % (AM)	-	-	-	-
PM Peak Hour	1800-1900	1800-1900	1800-1900	1800-1900
One-way flow at PM peak hour	730	740	700	690
T - % (PM)	-	-	-	-
Prop.of commercial vehicles - 16 hr.	-	-	-	-
WEST BOUND				
A.A.D.T.	22600	22400	24020	22460
R 12 / 24 - %	59.6	60.8	56.3	57
R 16 / 24 - %	78.5	80.4	74.5	73.3
AM Peak Hour	0900-1000	0900-1000	0900-1000	0900-1000
One-way flow at AM peak hour	1010	1010	1070	950
T - % (AM)	-	-	-	-
PM Peak Hour	1800-1900	1800-1900	1800-1900	1800-1900
One-way flow at PM peak hour	1260	1270	1250	1220
T - % (PM)	-	-	-	-
Prop.of commercial vehicles - 16 hr.	-	-	-	-

3. OTHER INFORMATION AND COMMENT