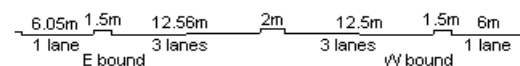
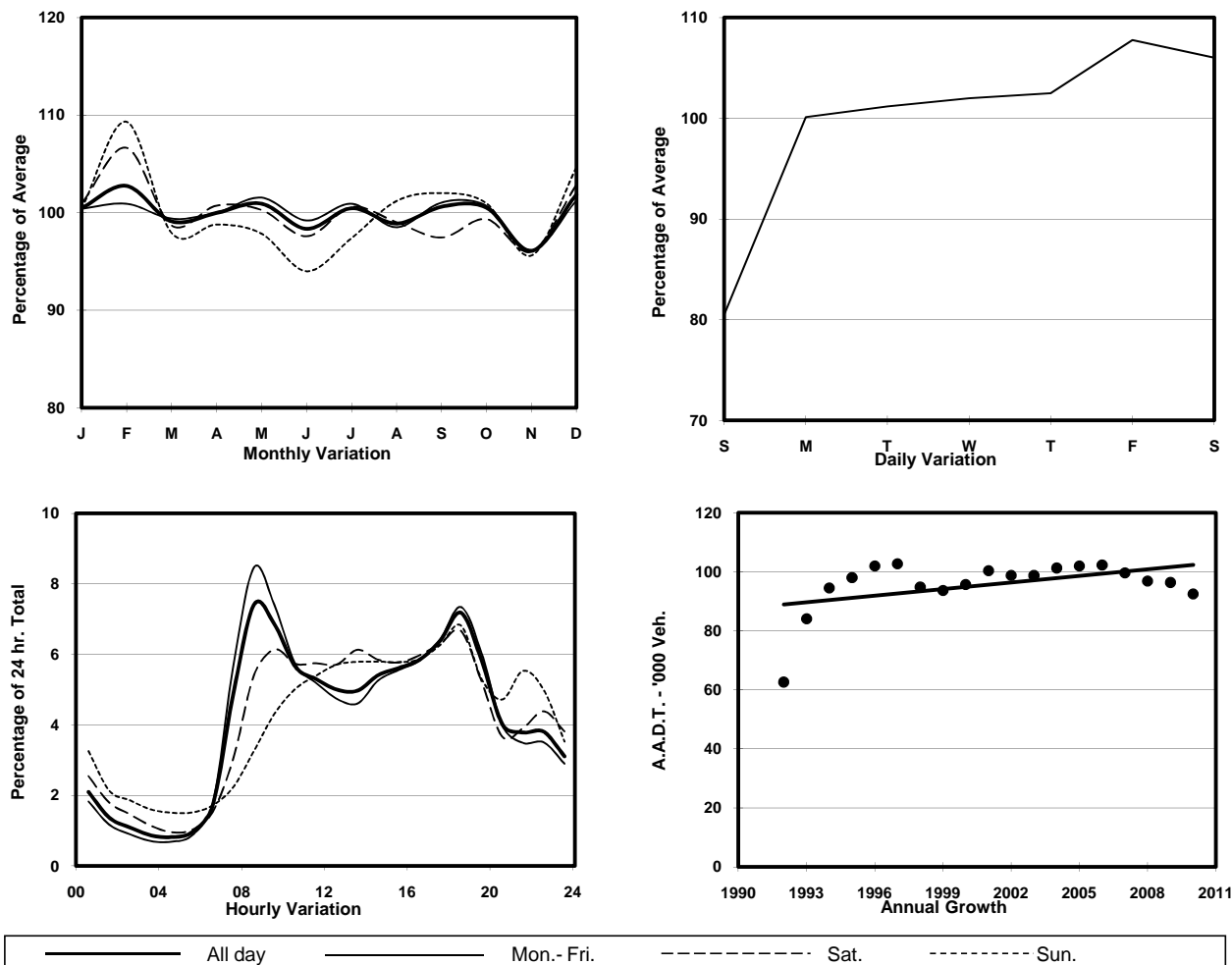


YEAR 2010  
CORE STATION 3023  
ROAD NETWORK MAJOR  
ROAD TYPE EXPRESSWAY

LINK KWUN TONG BYPASS <K77> (from WAI YIP ST to CHEUNG YIP ST)



## 1. TRAFFIC FLOW VARIATION AND GROWTH



## 2. TRAFFIC CHARACTERISTICS (BY DIRECTION)

Parameter	All - Day	Mon. - Fri.	Sat.	Sun.
<b>EAST BOUND</b>				
A.A.D.T.	49120	51480	51380	38730
R 12 / 24 - %	69.4	71.2	67.4	60
R 16 / 24 - %	88	89.4	85.5	82.3
AM Peak Hour	0900-1000	0900-1000	0900-1000	0900-1000
One-way flow at AM peak hour	3390	3860	3130	1500
T - % (AM)	-	-	-	-
PM Peak Hour	1800-1900	1800-1900	1800-1900	1800-1900
One-way flow at PM peak hour	3590	3870	3370	2670
T - % (PM)	-	-	-	-
Prop.of commercial vehicles - 16 hr.	-	-	-	-
<b>WEST BOUND</b>				
A.A.D.T.	43410	44540	47580	36810
R 12 / 24 - %	71.9	73.5	69.8	64.7
R 16 / 24 - %	87.9	89	86	83.4
AM Peak Hour	0800-0900	0800-0900	0900-1000	0900-1000
One-way flow at AM peak hour	3630	4310	2950	1770
T - % (AM)	-	-	-	-
PM Peak Hour	1800-1900	1800-1900	1800-1900	1800-1900
One-way flow at PM peak hour	3060	3180	3230	2480
T - % (PM)	-	-	-	-
Prop.of commercial vehicles - 16 hr.	-	-	-	-

## 3. OTHER INFORMATION AND COMMENT