

YEAR 2010

CORE STATION 5035

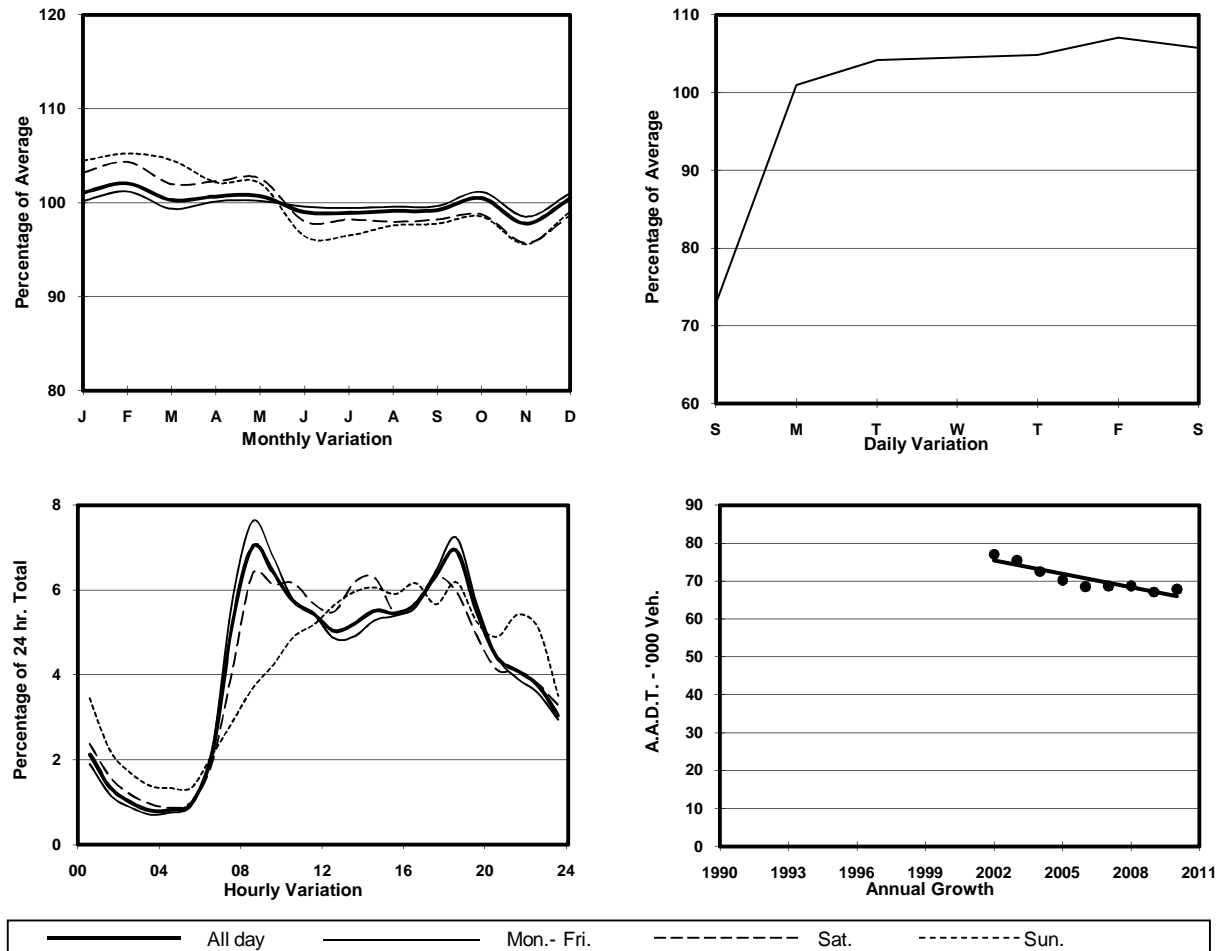
ROAD NETWORK MAJOR

ROAD TYPE EXPRESSWAY

LINK TUEN MUN RD (from CASTLE PEAK RD - TSUEN WAN
to TSING LONG HIGHWAY - TING KAU BRIDGE)



1. TRAFFIC FLOW VARIATION AND GROWTH



2. TRAFFIC CHARACTERISTICS (BY DIRECTION)

Parameter	All - Day	Mon. - Fri.	Sat.	Sun.
EAST BOUND				
A.A.D.T.	32840	35100	34550	23260
R 12 / 24 - %	75.2	76.5	74	66.7
R 16 / 24 - %	88.3	89	87.4	84.5
AM Peak Hour	0800-0900	0800-0900	0800-0900	0900-1000
One-way flow at AM peak hour	3170	3680	3020	1240
T - % (AM)	-	-	-	-
PM Peak Hour	1800-1900	1700-1800	1700-1800	1800-1900
One-way flow at PM peak hour	1940	2080	1960	1400
T - % (PM)	-	-	-	-
Prop.of commercial vehicles - 16 hr.	-	-	-	-
WEST BOUND				
A.A.D.T.	35010	36700	38200	27000
R 12 / 24 - %	65	65.8	66.2	58.6
R 16 / 24 - %	87.1	88.1	86.3	81.7
AM Peak Hour	0900-1000	0900-1000	0900-1000	0900-1000
One-way flow at AM peak hour	1760	1950	1910	890
T - % (AM)	-	-	-	-
PM Peak Hour	1800-1900	1800-1900	1700-1800	1600-1700
One-way flow at PM peak hour	2760	3110	2630	1750
T - % (PM)	-	-	-	-
Prop.of commercial vehicles - 16 hr.	-	-	-	-

3. OTHER INFORMATION AND COMMENT