

YEAR

2010

LINK

MAGAZINE GAP RD (from GARDEN RD to PEAK RD)

COVERAGE (B) STATION

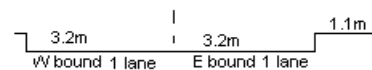
2205

ROAD NETWORK

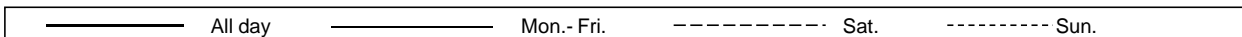
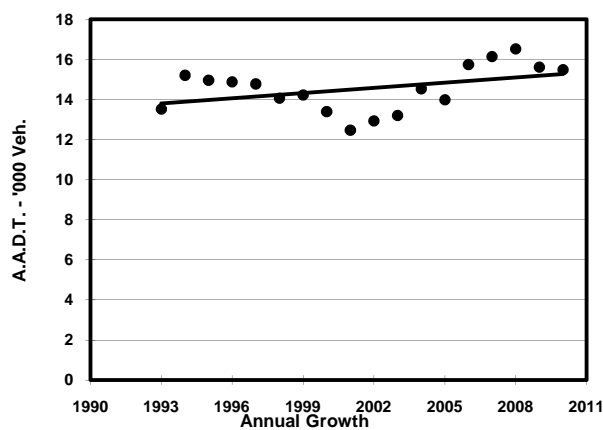
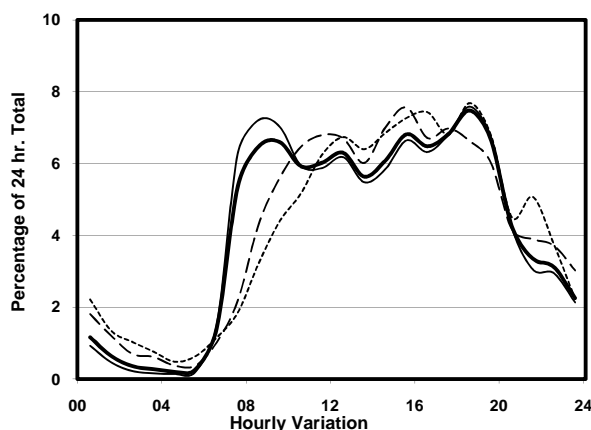
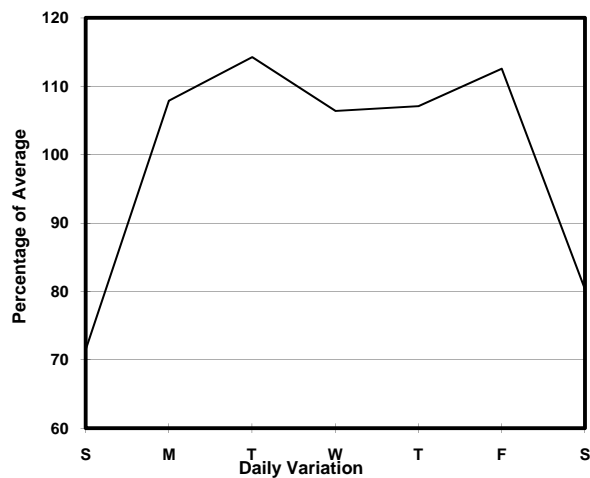
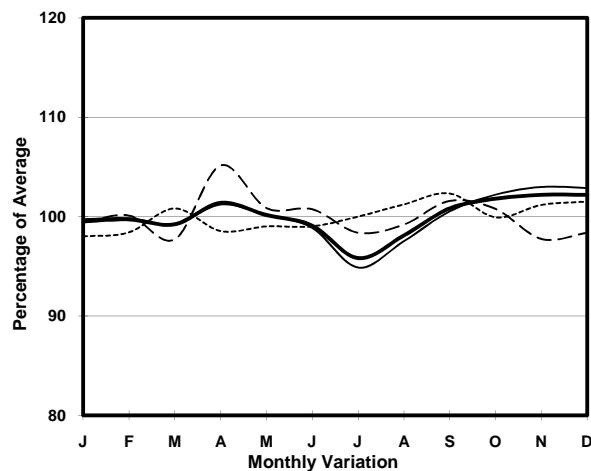
MAJOR

ROAD TYPE

DISTRICT DISTRIBUTOR



1. TRAFFIC FLOW VARIATION AND GROWTH



2. TRAFFIC CHARACTERISTICS (BY DIRECTION)

Parameter	All - Day	Mon. - Fri.	Sat.	Sun.
EAST BOUND				
A.A.D.T.	8080	8950	6580	5970
R 12 / 24 - %	73.9	74.8	71.8	69.2
R 16 / 24 - %	92.8	93.6	90.2	89.8
AM Peak Hour	0800-0900	0800-0900	0900-1000	0900-1000
One-way flow at AM peak hour	480	580	340	270
T - % (AM)	-	0.8	-	-
PM Peak Hour	1800-1900	1800-1900	1600-1700	1600-1700
One-way flow at PM peak hour	640	740	480	450
T - % (PM)	-	0.7	-	-
Prop.of commercial vehicles - 16 hr.	-	1.2	-	-
WEST BOUND				
A.A.D.T.	7410	8270	6020	5240
R 12 / 24 - %	78.4	79.9	74.3	71
R 16 / 24 - %	94.1	94.9	91.6	90.6
AM Peak Hour	0900-1000	0800-0900	0900-1000	0900-1000
One-way flow at AM peak hour	550	670	370	230
T - % (AM)	-	2.9	-	-
PM Peak Hour	1800-1900	1700-1800	1700-1800	1800-1900
One-way flow at PM peak hour	520	570	410	430
T - % (PM)	-	3.4	-	-
Prop.of commercial vehicles - 16 hr.	-	2.7	-	-

3. OTHER INFORMATION AND COMMENT

4. Vehicle classification and occupancy - Monday to Friday

Time		Class of vehicle									
		Motor	Private	Taxi	Private	PLB	Goods veh.		Non	Fr. Bus	
		Cycle	Car		LB		Light	M & H	Fr. Bus	SD	DD
0700-0800	Pro	0.0	51.1	32.1	3.2	3.6	1.8	0.0	8.1	0.0	0.0
	Ocp	0.0	1.6	2.2	7.6	13.9	1.3	0.0	8.9	0.0	0.0
0800-0900	Pro	1.1	60.9	28.6	1.1	2.3	4.1	0.0	1.9	0.0	0.0
	Ocp	1.0	1.5	2.1	4.3	14.3	2.4	0.0	3.4	0.0	0.0
0900-1000	Pro	0.6	61.2	28.7	0.6	2.2	5.4	0.0	1.3	0.0	0.0
	Ocp	1.0	1.5	2.0	1.5	14.4	2.0	0.0	2.0	0.0	0.0
1000-1100	Pro	2.1	64.4	22.9	1.0	2.1	7.2	0.0	0.3	0.0	0.0
	Ocp	1.0	1.4	1.8	2.3	9.8	1.8	0.0	3.0	0.0	0.0
1100-1200	Pro	1.2	58.1	24.0	1.2	2.4	11.0	0.0	2.0	0.0	0.0
	Ocp	1.0	1.5	1.9	2.0	7.3	1.4	0.0	3.0	0.0	0.0
1200-1300	Pro	0.8	61.8	27.5	0.8	2.0	7.2	0.0	0.0	0.0	0.0
	Ocp	1.0	1.7	2.3	2.5	15.0	2.0	0.0	0.0	0.0	0.0
1300-1400	Pro	2.7	54.2	27.1	2.2	2.7	9.3	0.4	1.3	0.0	0.0
	Ocp	1.2	1.5	2.0	3.6	10.7	1.5	2.0	8.7	0.0	0.0
1400-1500	Pro	1.4	53.6	31.1	1.4	2.7	8.6	0.0	1.4	0.0	0.0
	Ocp	1.0	1.5	1.9	1.7	6.8	1.7	0.0	6.0	0.0	0.0
1500-1600	Pro	0.8	57.0	26.3	0.4	1.6	9.2	0.0	4.8	0.0	0.0
	Ocp	1.5	1.5	2.2	4.0	8.8	1.7	0.0	12.2	0.0	0.0
1600-1700	Pro	0.0	63.8	19.6	2.6	3.0	7.2	0.0	3.8	0.0	0.0
	Ocp	0.0	1.5	2.1	3.3	6.7	1.6	0.0	6.6	0.0	0.0
1700-1800	Pro	1.5	60.4	29.1	0.4	1.8	4.0	0.0	2.9	0.0	0.0
	Ocp	1.3	1.6	2.6	7.0	12.8	2.1	0.0	8.4	0.0	0.0
1800-1900 Peak hour	Pro	0.4	64.8	28.6	0.0	2.9	2.6	0.0	0.7	0.0	0.0
	Ocp	1.0	1.5	2.4	0.0	12.5	1.3	0.0	25.0	0.0	0.0
1900-2000	Pro	1.1	62.5	33.2	0.0	1.1	1.8	0.0	0.4	0.0	0.0
	Ocp	1.0	1.6	2.3	0.0	16.0	1.4	0.0	7.0	0.0	0.0
2000-2100	Pro	1.5	58.9	36.7	0.0	1.9	0.5	0.0	0.5	0.0	0.0
	Ocp	1.0	1.6	1.8	0.0	7.8	2.0	0.0	8.0	0.0	0.0
2100-2200	Pro	1.9	42.9	49.5	1.0	3.8	1.0	0.0	0.0	0.0	0.0
	Ocp	1.0	1.4	1.8	1.0	4.8	3.0	0.0	0.0	0.0	0.0
2200-2300	Pro	0.0	59.1	36.2	0.0	4.7	0.0	0.0	0.0	0.0	0.0
	Ocp	0.0	1.4	1.8	0.0	5.7	0.0	0.0	0.0	0.0	0.0
16 hours	Pro	1.1	59.3	29.0	1.0	2.4	5.4	0.1	1.9	0.0	0.0
	Ocp	1.1	1.5	2.1	3.8	10.5	1.7	2.0	8.1	0.0	0.0

Legend

- Pro.** Proportion of vehicles in % (Sum may not add up to 100% due to figure rounding)
- Ocp.** Average occupancy of vehicles
- M&H** Medium and Heavy