

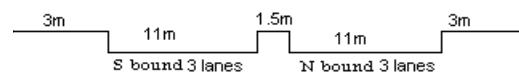
YEAR 2010

COVERAGE (B) STATION 4205

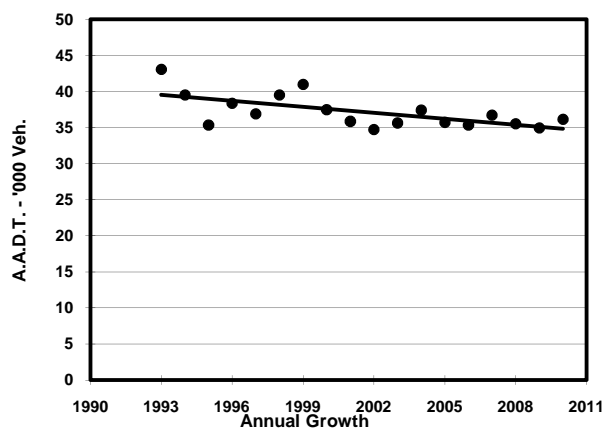
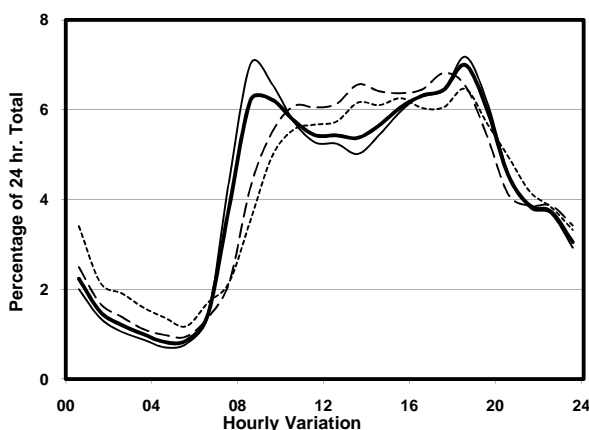
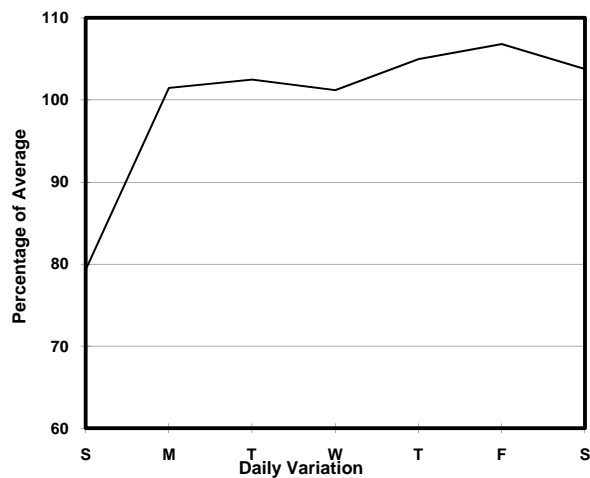
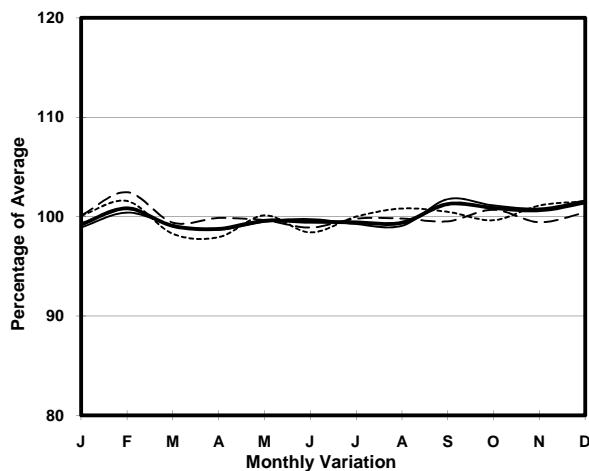
ROAD NETWORK MAJOR

ROAD TYPE PRIMARY DISTRIBUTOR

LINK WATERLOO RD (from YIM PO FONG ST to PUI CHING RD)



1. TRAFFIC FLOW VARIATION AND GROWTH



— All day — Mon.- Fri. - - - - Sat. - - - - - Sun.

2. TRAFFIC CHARACTERISTICS (BY DIRECTION)

Parameter	All - Day	Mon. - Fri.	Sat.	Sun.
SOUTH BOUND				
A.A.D.T.	15220	16290	15580	10700
R 12 / 24 - %	75.7	76.4	75.2	70.6
R 16 / 24 - %	91.2	91.9	90	88
AM Peak Hour	0800-0900	0800-0900	0900-1000	0900-1000
One-way flow at AM peak hour	1110	1340	960	570
T - % (AM)	-	7.1	-	-
PM Peak Hour	1800-1900	1800-1900	1600-1700	1800-1900
One-way flow at PM peak hour	1130	1230	1130	750
T - % (PM)	-	3.8	-	-
Prop.of commercial vehicles - 16 hr.	-	7.6	-	-
NORTH BOUND				
A.A.D.T.	20940	21510	22350	18300
R 12 / 24 - %	65.5	66.2	65.2	61.3
R 16 / 24 - %	85.5	86.6	84.3	80.7
AM Peak Hour	0900-1000	0800-0900	0900-1000	0900-1000
One-way flow at AM peak hour	1140	1320	1130	870
T - % (AM)	-	4.6	-	-
PM Peak Hour	1800-1900	1800-1900	1700-1800	1800-1900
One-way flow at PM peak hour	1410	1480	1500	1120
T - % (PM)	-	4	-	-
Prop.of commercial vehicles - 16 hr.	-	5.9	-	-

3. OTHER INFORMATION AND COMMENT

4. Vehicle classification and occupancy - Monday to Friday

Time		Class of vehicle									
		Motor	Private	Taxi	Private	PLB	Goods veh.		Non	Fr. Bus	
		Cycle	Car		LB		Light	M & H	Fr. Bus	SD	DD
0700-0800	Pro	1.4	15.5	49.8	7.2	4.8	8.6	1.0	6.5	0.7	4.5
	Ocp	1.0	1.4	2.4	7.1	5.9	1.8	1.7	7.6	9.0	26.5
0800-0900	Pro	1.5	43.9	38.0	0.8	2.7	7.1	1.2	1.6	0.3	2.7
	Ocp	1.1	1.5	2.0	9.5	15.3	1.7	1.3	14.3	18.9	33.5
0900-1000	Pro	1.3	38.7	37.9	2.3	2.1	11.8	1.7	0.8	0.3	3.0
	Ocp	1.0	1.5	2.2	4.0	12.5	1.7	1.7	7.3	7.9	22.6
1000-1100	Pro	1.1	30.4	42.4	3.1	1.3	14.9	2.0	1.6	0.3	2.9
	Ocp	1.0	1.5	2.0	2.5	9.4	1.6	1.7	5.4	9.3	24.5
1100-1200	Pro	1.1	34.9	34.3	2.8	1.9	18.1	1.7	2.2	0.3	2.7
	Ocp	1.0	1.7	1.9	2.9	6.9	1.6	1.3	10.9	12.3	26.2
1200-1300	Pro	2.0	32.0	38.0	3.6	2.0	15.8	1.2	2.0	0.4	3.1
	Ocp	1.0	1.6	1.9	4.0	6.1	1.6	1.7	11.0	8.5	22.7
1300-1400	Pro	1.1	29.3	43.6	1.1	2.4	14.8	2.6	1.3	0.4	3.5
	Ocp	1.0	1.5	2.1	3.0	13.7	1.7	1.6	15.0	9.4	23.6
1400-1500	Pro	1.2	31.8	41.6	2.2	1.6	14.6	2.0	1.2	0.4	3.4
	Ocp	1.0	1.5	1.9	2.5	8.6	1.7	1.3	3.3	7.3	23.0
1500-1600	Pro	1.2	34.6	37.7	2.9	2.3	14.2	0.8	3.5	0.4	2.4
	Ocp	1.0	1.5	1.9	5.1	11.3	1.5	1.0	14.0	10.0	24.2
1600-1700	Pro	1.0	41.7	31.0	2.0	2.6	12.8	1.2	4.4	0.3	3.0
	Ocp	1.0	1.6	2.1	3.9	11.3	1.6	1.9	9.1	14.0	23.6
1700-1800	Pro	1.8	44.3	31.6	0.5	2.5	10.9	1.1	3.0	0.4	3.8
	Ocp	1.0	1.7	2.3	2.3	10.5	1.6	1.3	4.2	9.3	30.0
1800-1900 Peak hour	Pro	1.3	45.7	38.7	0.3	3.7	6.6	0.3	1.4	0.2	1.9
	Ocp	1.1	1.6	2.0	2.0	14.1	1.6	2.0	10.4	17.1	39.8
1900-2000	Pro	1.0	51.0	33.8	0.2	4.2	5.2	0.3	1.2	0.3	2.8
	Ocp	1.0	1.7	2.2	4.0	13.0	1.3	2.0	15.9	12.3	34.4
2000-2100	Pro	1.2	45.7	41.3	0.2	2.8	3.0	0.2	1.4	0.4	3.7
	Ocp	1.0	1.9	1.9	1.0	11.8	1.4	1.0	2.5	7.0	25.8
2100-2200	Pro	1.7	35.0	48.2	0.3	3.4	4.9	0.0	1.1	0.6	4.8
	Ocp	1.2	1.6	2.0	3.0	10.8	1.4	0.0	4.0	5.9	27.0
2200-2300	Pro	1.3	39.3	46.5	0.0	4.5	1.6	0.5	0.8	0.6	4.8
	Ocp	1.2	1.8	2.1	0.0	11.2	2.0	1.0	8.0	6.4	20.7
16 hours	Pro	1.3	38.2	38.8	1.7	2.7	10.5	1.1	2.0	0.4	3.2
	Ocp	1.0	1.6	2.1	4.3	11.4	1.6	1.5	9.3	10.3	26.7

Legend

Pro. Proportion of vehicles in % (Sum may not add up to 100% due to figure rounding)
Ocp. Average occupancy of vehicles
M&H Medium and Heavy