

YEAR

2010

LINK

HOI WANG RD (from HOI TING RD to CHERRY ST RA)

COVERAGE (B) STATION

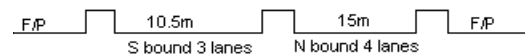
4220

ROAD NETWORK

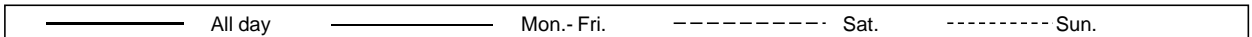
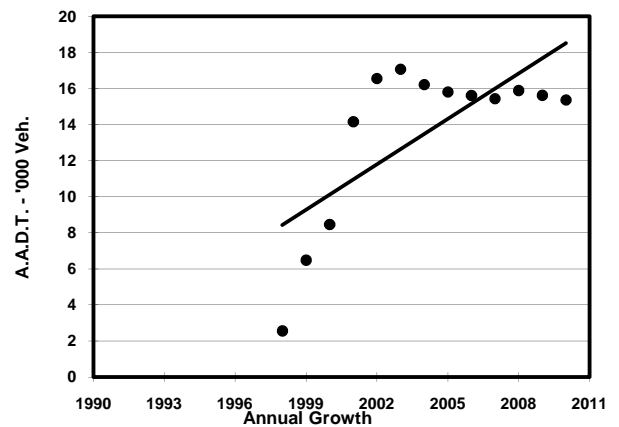
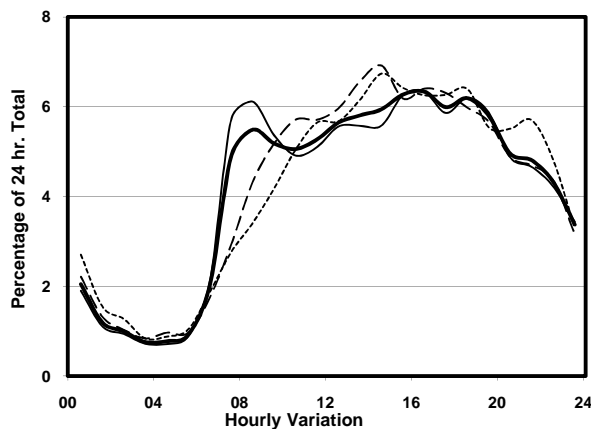
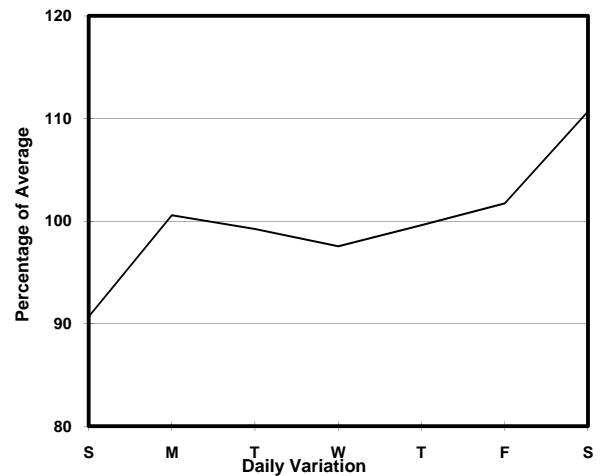
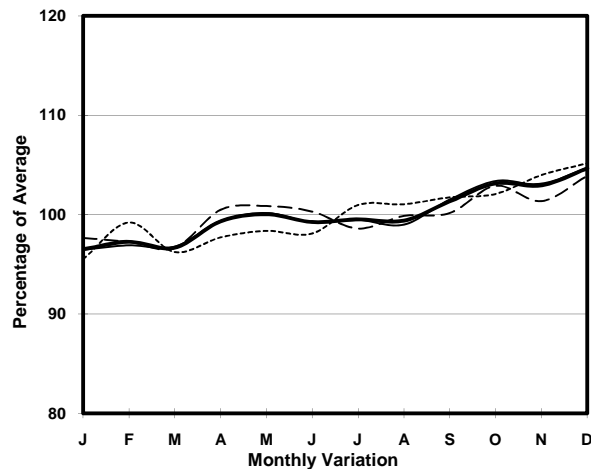
MAJOR

ROAD TYPE

PRIMARY DISTRIBUTOR



## 1. TRAFFIC FLOW VARIATION AND GROWTH



## 2. TRAFFIC CHARACTERISTICS (BY DIRECTION)

Parameter	All - Day	Mon. - Fri.	Sat.	Sun.
<b>SOUTH BOUND</b>				
A.A.D.T.	7530	7560	8360	6870
R 12 / 24 - %	67	67.5	67.3	64.3
R 16 / 24 - %	87.5	87.9	87.4	85.5
AM Peak Hour	0800-0900	0800-0900	0900-1000	0900-1000
One-way flow at AM peak hour	390	430	460	290
T - % (AM)	-	17.1	-	-
PM Peak Hour	1800-1900	1800-1900	1800-1900	1800-1900
One-way flow at PM peak hour	500	510	530	460
T - % (PM)	-	12.3	-	-
Prop.of commercial vehicles - 16 hr.	-	17	-	-
<b>NORTH BOUND</b>				
A.A.D.T.	7840	7860	8730	7130
R 12 / 24 - %	69.1	69.7	69	65.7
R 16 / 24 - %	88.3	88.5	88.1	87.6
AM Peak Hour	0800-0900	0800-0900	0900-1000	0900-1000
One-way flow at AM peak hour	450	510	430	290
T - % (AM)	-	18.5	-	-
PM Peak Hour	1600-1700	1600-1700	1600-1700	1600-1700
One-way flow at PM peak hour	530	520	600	480
T - % (PM)	-	20.3	-	-
Prop.of commercial vehicles - 16 hr.	-	19.9	-	-

## 3. OTHER INFORMATION AND COMMENT

**4. Vehicle classification and occupancy - Monday to Friday**

Time		Class of vehicle									
		Motor	Private	Taxi	Private	PLB	Goods veh.		Non	Fr. Bus	
		Cycle	Car		LB		Light	M & H	Fr. Bus	SD	DD
0700-0800	Pro	1.3	11.6	29.0	3.9	14.2	12.9	1.9	9.7	0.2	15.5
	Ocp	1.0	1.4	1.9	5.7	8.4	1.2	1.3	11.1	22.0	15.7
0800-0900	Pro	1.6	37.6	23.7	2.5	8.2	8.6	2.0	4.9	0.1	10.7
	Ocp	1.3	1.3	1.7	7.0	8.6	1.2	1.8	7.3	17.0	13.1
0900-1000	Pro	1.4	25.9	24.9	1.9	10.1	12.5	6.2	1.9	0.1	15.0
	Ocp	1.0	1.3	1.4	2.0	5.5	1.3	1.3	1.0	2.0	5.1
1000-1100	Pro	0.7	15.0	15.6	3.4	19.7	25.9	0.7	3.4	0.2	15.5
	Ocp	1.0	1.5	1.6	1.8	5.1	1.4	2.0	7.0	5.0	5.1
1100-1200	Pro	4.2	20.9	21.5	2.4	10.2	21.5	3.0	3.6	0.2	12.6
	Ocp	1.1	1.7	1.4	2.3	4.1	1.7	1.0	3.2	18.0	5.1
1200-1300	Pro	2.0	19.4	12.9	5.5	11.4	25.8	5.5	6.9	0.1	10.5
	Ocp	1.0	1.6	1.6	3.5	6.1	1.4	1.3	10.1	9.0	5.8
1300-1400	Pro	2.0	24.6	17.6	2.0	12.5	23.6	5.0	2.0	0.1	10.5
	Ocp	1.3	1.3	1.8	3.0	5.0	1.7	1.6	6.5	18.0	8.5
1400-1500	Pro	2.5	26.8	21.8	0.5	8.9	19.8	5.5	3.0	0.1	11.2
	Ocp	1.0	1.6	1.4	1.0	6.6	1.4	1.5	7.3	7.0	6.5
1500-1600	Pro	0.0	18.8	25.3	1.6	13.4	21.5	3.8	4.8	0.1	10.6
	Ocp	0.0	1.6	1.8	3.7	5.0	1.7	1.6	10.3	13.0	8.8
1600-1700 Peak hour	Pro	1.8	24.8	23.9	3.5	8.8	15.9	3.5	7.5	0.1	10.2
	Ocp	1.0	1.8	1.5	3.0	7.1	1.6	1.3	6.9	20.0	9.7
1700-1800	Pro	1.0	24.4	15.6	5.8	12.2	19.5	1.5	7.3	0.1	12.7
	Ocp	1.0	1.4	1.6	2.8	7.1	1.5	1.7	6.1	9.0	9.6
1800-1900	Pro	3.0	45.7	15.9	0.5	9.4	11.4	0.5	1.5	0.1	11.9
	Ocp	1.0	1.5	2.0	3.0	10.3	1.4	2.0	11.0	2.0	13.1
1900-2000	Pro	2.2	47.1	25.1	0.4	8.1	5.8	0.0	0.9	0.1	10.1
	Ocp	1.0	1.5	1.6	1.0	9.2	1.3	0.0	10.0	13.0	10.1
2000-2100	Pro	4.4	42.6	24.6	0.0	12.0	3.8	0.5	1.1	0.1	10.9
	Ocp	1.0	1.4	1.7	0.0	7.7	1.6	1.0	1.0	2.0	7.5
2100-2200	Pro	3.4	46.4	18.3	0.0	14.3	4.6	0.0	0.6	0.1	12.3
	Ocp	1.0	1.8	1.8	0.0	5.2	1.4	0.0	3.0	7.0	7.8
2200-2300	Pro	3.3	31.6	29.6	0.0	16.4	3.3	0.0	1.3	0.2	14.3
	Ocp	1.2	1.6	2.1	0.0	4.8	1.4	0.0	3.5	6.0	8.8
16 hours	Pro	2.1	29.5	21.5	2.1	11.5	14.7	2.6	3.8	0.1	12.0
	Ocp	1.1	1.5	1.7	3.4	6.5	1.5	1.4	7.6	10.6	8.8

**Legend**

**Pro.** Proportion of vehicles in % (Sum may not add up to 100% due to figure rounding)  
**Ocp.** Average occupancy of vehicles  
**M&H** Medium and Heavy