

YEAR

2010

LINK SOY ST (from SAI YEUNG CHOI ST S to YIM PO FONG ST)

COVERAGE (B) STATION

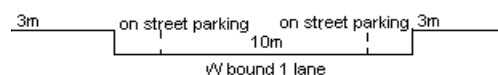
4403

ROAD NETWORK

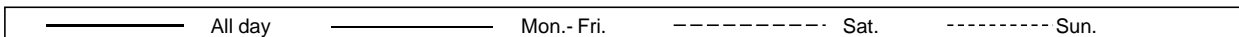
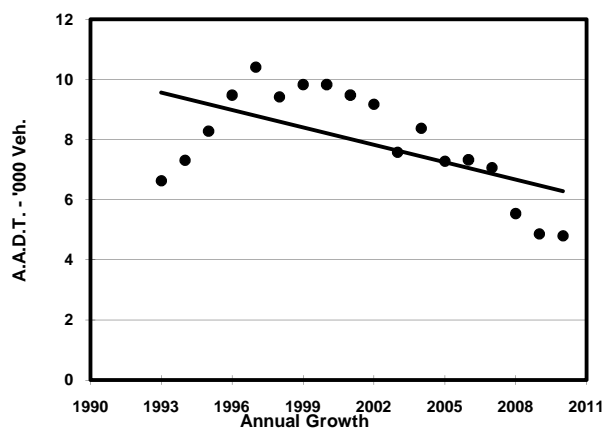
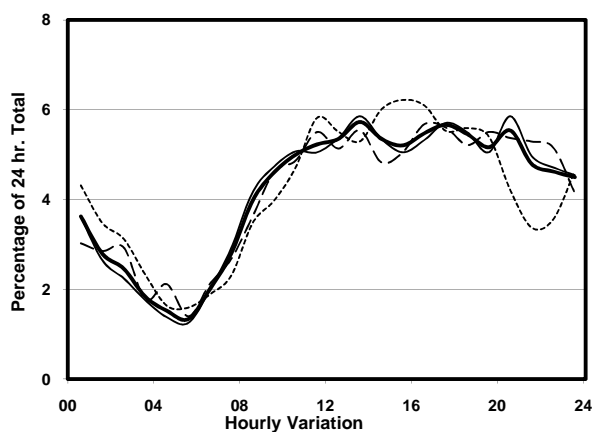
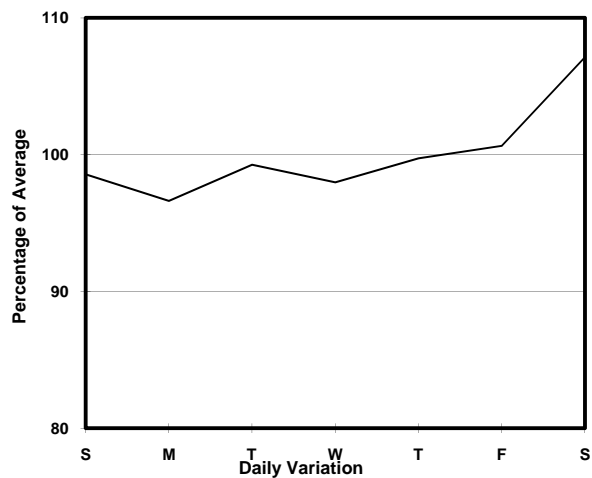
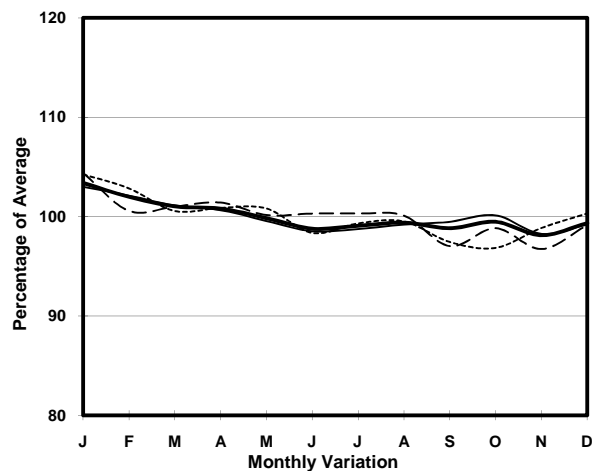
MINOR

ROAD TYPE

LOCAL DISTRIBUTOR



## 1. TRAFFIC FLOW VARIATION AND GROWTH



## 2. TRAFFIC CHARACTERISTICS (BY DIRECTION)

Parameter	All - Day	Mon. - Fri.	Sat.	Sun.
<b>WEST BOUND</b>				
A.A.D.T.	4800	4750	5160	4750
R 12 / 24 - %	59.9	60.1	58.3	60.5
R 16 / 24 - %	80	80.7	79.7	77
AM Peak Hour	0900-1000	0900-1000	0900-1000	0900-1000
One-way flow at AM peak hour	220	230	240	190
T - % (AM)	-	3.4	-	-
PM Peak Hour	1700-1800	1700-1800	1600-1700	1600-1700
One-way flow at PM peak hour	270	270	290	290
T - % (PM)	-	10.6	-	-
Prop.of commercial vehicles - 16 hr.	-	7.6	-	-
 A.A.D.T.	-	-	-	-
R 12 / 24 - %	-	-	-	-
R 16 / 24 - %	-	-	-	-
AM Peak Hour	-	-	-	-
One-way flow at AM peak hour	-	-	-	-
T - % (AM)	-	-	-	-
PM Peak Hour	-	-	-	-
One-way flow at PM peak hour	-	-	-	-
T - % (PM)	-	-	-	-
Prop.of commercial vehicles - 16 hr.	-	-	-	-

## 3. OTHER INFORMATION AND COMMENT

**4. Vehicle classification and occupancy - Monday to Friday**

Time		Class of vehicle									
		Motor	Private	Taxi	Private	PLB	Goods veh.		Non	Fr. Bus	
		Cycle	Car		LB		Light	M & H	Fr. Bus	SD	DD
0700-0800	Pro	0.0	31.3	9.4	6.3	43.8	6.3	0.0	3.1	0.0	0.0
	Ocp	0.0	1.3	1.7	8.0	8.7	1.0	0.0	1.0	0.0	0.0
0800-0900	Pro	0.0	14.0	24.0	4.0	26.0	24.0	2.0	6.0	0.0	0.0
	Ocp	0.0	1.0	1.7	10.5	9.3	1.6	2.0	11.7	0.0	0.0
0900-1000	Pro	3.3	25.0	30.0	1.7	21.7	15.0	1.7	1.7	0.0	0.0
	Ocp	1.5	1.4	1.5	1.0	7.7	1.7	1.0	1.0	0.0	0.0
1000-1100	Pro	8.3	10.0	56.7	1.7	16.7	5.0	0.0	1.7	0.0	0.0
	Ocp	1.0	1.3	1.6	1.0	9.8	1.3	0.0	1.0	0.0	0.0
1100-1200	Pro	1.8	19.3	33.3	0.0	22.8	10.5	1.8	10.5	0.0	0.0
	Ocp	1.0	1.8	1.6	0.0	7.4	1.5	2.0	8.0	0.0	0.0
1200-1300	Pro	7.1	30.4	26.8	1.8	16.1	8.9	3.6	5.4	0.0	0.0
	Ocp	1.0	1.6	1.5	2.0	7.0	1.4	2.0	4.7	0.0	0.0
1300-1400 Peak hour	Pro	3.0	16.7	37.9	0.0	13.6	21.2	3.0	4.5	0.0	0.0
	Ocp	1.0	1.0	1.7	0.0	10.3	1.6	2.0	1.0	0.0	0.0
1400-1500	Pro	2.1	14.6	37.5	0.0	12.5	18.8	10.4	4.2	0.0	0.0
	Ocp	1.0	1.4	1.7	0.0	8.2	1.7	2.2	6.5	0.0	0.0
1500-1600	Pro	5.9	15.7	33.3	0.0	15.7	19.6	5.9	3.9	0.0	0.0
	Ocp	1.0	1.4	1.8	0.0	8.5	1.8	2.0	13.5	0.0	0.0
1600-1700	Pro	11.8	21.6	25.5	2.0	11.8	19.6	0.0	7.8	0.0	0.0
	Ocp	1.0	1.3	2.2	1.0	9.3	1.8	0.0	3.8	0.0	0.0
1700-1800	Pro	4.5	45.5	9.1	0.0	15.2	15.2	4.5	6.1	0.0	0.0
	Ocp	1.0	1.2	2.2	0.0	9.0	1.3	1.7	1.0	0.0	0.0
1800-1900	Pro	20.0	38.0	18.0	2.0	2.0	10.0	0.0	10.0	0.0	0.0
	Ocp	1.2	1.7	2.9	2.0	9.0	1.4	0.0	3.2	0.0	0.0
1900-2000	Pro	6.5	34.8	34.8	0.0	13.0	6.5	0.0	4.3	0.0	0.0
	Ocp	1.0	1.6	2.6	0.0	9.0	1.3	0.0	4.0	0.0	0.0
2000-2100	Pro	6.2	20.0	44.6	0.0	16.9	3.1	0.0	9.2	0.0	0.0
	Ocp	1.5	1.3	1.6	0.0	8.5	1.0	0.0	4.0	0.0	0.0
2100-2200	Pro	8.6	32.8	27.6	1.7	17.2	6.9	0.0	5.2	0.0	0.0
	Ocp	1.4	1.6	2.3	2.0	7.8	2.0	0.0	3.3	0.0	0.0
2200-2300	Pro	4.6	46.2	32.3	0.0	9.2	3.1	0.0	4.6	0.0	0.0
	Ocp	1.3	1.7	1.1	0.0	7.5	2.0	0.0	3.7	0.0	0.0
16 hours	Pro	5.9	26.1	30.8	1.1	16.5	12.0	2.0	5.6	0.0	0.0
	Ocp	1.2	1.5	1.8	4.6	8.5	1.6	1.9	4.7	0.0	0.0

**Legend**

**Pro.** Proportion of vehicles in % (Sum may not add up to 100% due to figure rounding)  
**Ocp.** Average occupancy of vehicles  
**M&H** Medium and Heavy