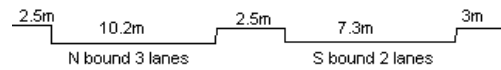
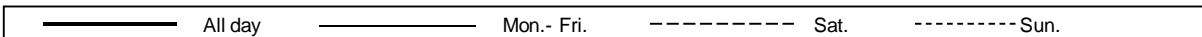
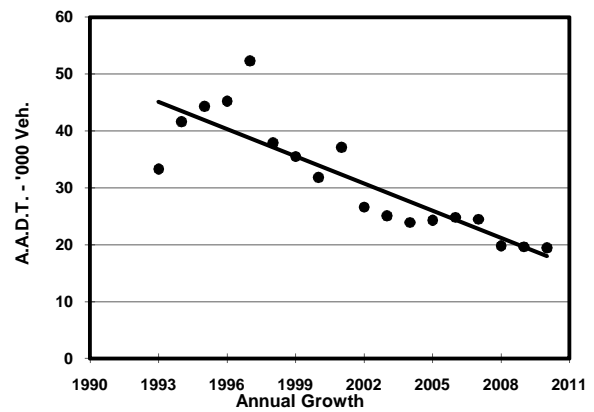
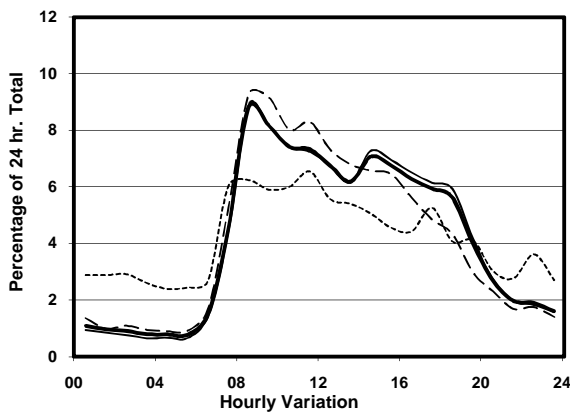
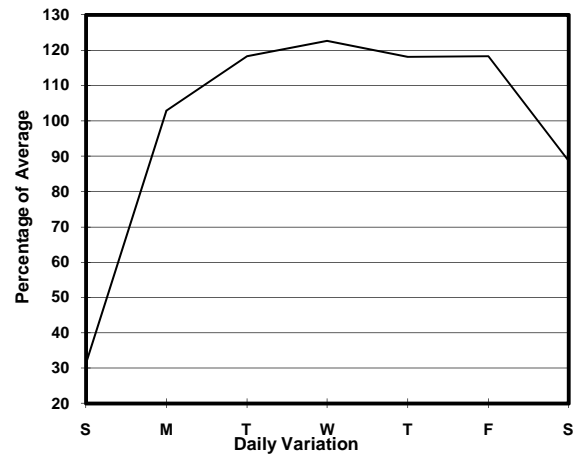
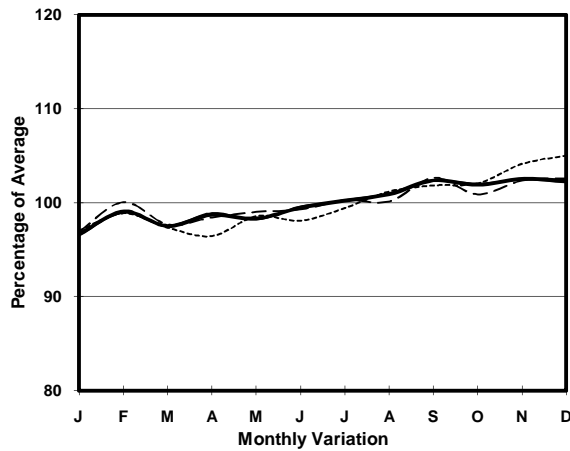


YEAR 2010
 COVERAGE (B) STATION 6214
 ROAD NETWORK MAJOR
 ROAD TYPE LOCAL DISTRIBUTOR

LINK CONTAINER PORT RD S (from N/O PMH INT to S/O PMH INT)



1. TRAFFIC FLOW VARIATION AND GROWTH



2. TRAFFIC CHARACTERISTICS (BY DIRECTION)

Parameter	All - Day	Mon. - Fri.	Sat.	Sun.
SOUTH BOUND				
A.A.D.T.	9100	11020	8200	2750
R 12 / 24 - %	81.4	82.1	82.7	64.8
R 16 / 24 - %	91.9	92.8	90.5	77.6
AM Peak Hour	0800-0900	0800-0900	0900-1000	0800-0900
One-way flow at AM peak hour	730	880	750	180
T - % (AM)	-	45.9	-	-
PM Peak Hour	1600-1700	1600-1700	1600-1700	1700-1800
One-way flow at PM peak hour	600	760	470	160
T - % (PM)	-	53.9	-	-
Prop.of commercial vehicles - 16 hr.	-	54.4	-	-
NORTH BOUND				
A.A.D.T.	10350	12390	9670	3510
R 12 / 24 - %	80.6	81.3	81.3	65.3
R 16 / 24 - %	91.3	92.1	90.8	79.3
AM Peak Hour	0800-0900	0800-0900	0800-0900	0900-1000
One-way flow at AM peak hour	990	1200	960	220
T - % (AM)	-	45.7	-	-
PM Peak Hour	1600-1700	1600-1700	1600-1700	1700-1800
One-way flow at PM peak hour	620	770	530	170
T - % (PM)	-	65.6	-	-
Prop.of commercial vehicles - 16 hr.	-	58.3	-	-

3. OTHER INFORMATION AND COMMENT

4. Vehicle classification and occupancy - Monday to Friday

Time		Class of vehicle									
		Motor	Private	Taxi	Private	PLB	Goods veh.		Non	Fr. Bus	
		Cycle	Car		LB		Light	M & H	Fr. Bus	SD	DD
0700-0800	Pro	3.1	2.4	14.4	0.5	1.6	21.7	54.2	2.1	0.0	0.0
	Ocp	1.0	1.0	1.9	1.0	8.8	1.6	1.2	19.9	0.0	0.0
0800-0900 Peak hour	Pro	1.5	10.0	19.8	0.0	0.8	22.1	43.1	2.7	0.0	0.0
	Ocp	1.0	1.2	1.9	0.0	10.6	1.6	1.2	16.1	0.0	0.0
0900-1000	Pro	2.0	6.7	11.3	0.0	0.6	24.3	54.8	0.4	0.0	0.0
	Ocp	1.0	1.8	1.6	0.0	8.3	1.5	1.3	8.5	0.0	0.0
1000-1100	Pro	0.4	5.5	4.3	0.4	0.4	28.4	60.5	0.0	0.0	0.0
	Ocp	1.0	1.4	1.8	3.0	12.5	1.5	1.4	0.0	0.0	0.0
1100-1200	Pro	1.9	6.5	4.4	0.2	0.5	25.9	60.6	0.0	0.0	0.0
	Ocp	1.0	1.2	1.6	2.0	7.5	1.4	1.3	0.0	0.0	0.0
1200-1300	Pro	0.5	6.2	6.2	0.0	0.7	25.1	61.2	0.0	0.0	0.0
	Ocp	1.0	1.5	1.8	0.0	4.0	1.4	1.3	0.0	0.0	0.0
1300-1400	Pro	0.7	10.0	5.7	0.0	0.7	29.0	53.6	0.2	0.0	0.0
	Ocp	1.3	1.4	1.7	0.0	2.7	1.5	1.3	1.0	0.0	0.0
1400-1500	Pro	1.5	7.0	7.7	1.5	0.7	26.6	54.9	0.2	0.0	0.0
	Ocp	1.0	1.5	2.0	1.9	6.3	1.4	1.3	1.0	0.0	0.0
1500-1600	Pro	1.4	6.6	6.4	0.6	0.6	28.1	55.9	0.4	0.0	0.0
	Ocp	1.0	1.5	1.7	1.3	7.3	1.4	1.3	1.0	0.0	0.0
1600-1700	Pro	1.1	7.3	3.4	0.6	0.6	26.7	59.5	0.6	0.0	0.0
	Ocp	1.0	1.6	2.3	4.0	7.0	1.4	1.3	7.7	0.0	0.0
1700-1800	Pro	0.7	8.4	8.7	0.5	0.9	24.0	54.3	2.5	0.0	0.0
	Ocp	1.0	1.2	1.7	3.0	9.0	1.4	1.2	24.9	0.0	0.0
1800-1900	Pro	2.3	13.3	7.9	0.2	0.7	23.1	49.5	2.8	0.0	0.0
	Ocp	1.0	1.2	1.6	3.0	16.0	1.5	1.2	29.1	0.0	0.0
1900-2000	Pro	1.7	14.6	9.8	0.0	1.1	14.3	56.9	1.7	0.0	0.0
	Ocp	1.0	1.4	1.9	0.0	11.3	1.4	1.2	15.0	0.0	0.0
2000-2100	Pro	1.8	9.7	13.2	0.0	0.9	14.9	59.4	0.3	0.0	0.0
	Ocp	1.0	1.4	1.6	0.0	5.7	1.5	1.1	1.0	0.0	0.0
2100-2200	Pro	1.1	8.9	14.8	0.4	0.7	15.5	58.7	0.0	0.0	0.0
	Ocp	1.0	1.6	1.7	2.0	5.5	1.4	1.1	0.0	0.0	0.0
2200-2300	Pro	2.1	5.3	20.2	0.0	0.0	11.7	60.1	0.5	0.0	0.0
	Ocp	1.0	1.5	2.0	0.0	0.0	1.4	1.1	52.0	0.0	0.0
16 hours	Pro	1.5	8.0	9.4	0.3	0.7	23.5	55.5	0.9	0.0	0.0
	Ocp	1.0	1.4	1.8	2.3	8.3	1.5	1.3	19.2	0.0	0.0

Legend

Pro. Proportion of vehicles in % (Sum may not add up to 100% due to figure rounding)
Ocp. Average occupancy of vehicles
M&H Medium and Heavy