

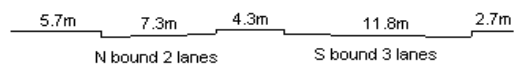
YEAR 2012

CORE STATION 1009

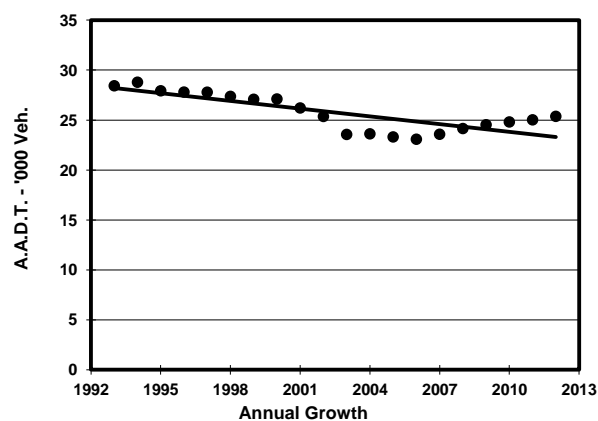
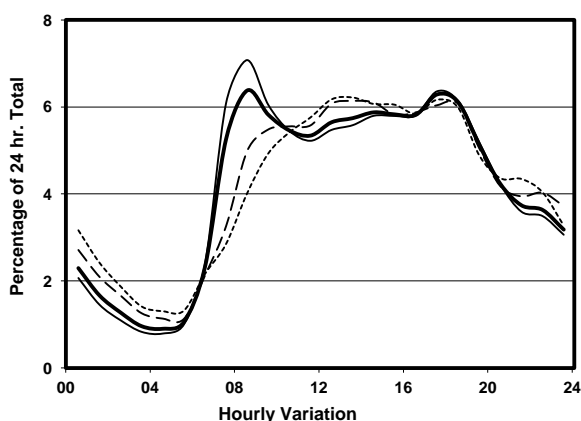
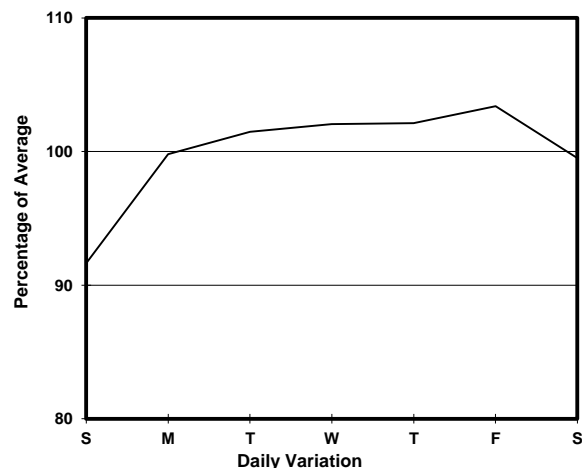
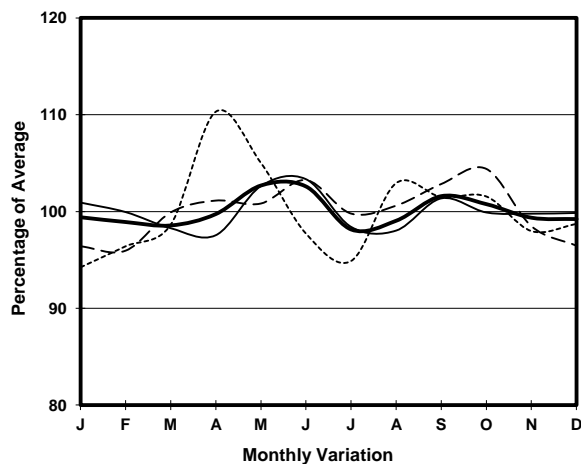
ROAD NETWORK MAJOR

ROAD TYPE PRIMARY DISTRIBUTOR

LINK CHAI WAN RD (from ISLAND EASTERN CORRIDOR
APPROACH to TAI TAM RD)



1. TRAFFIC FLOW VARIATION AND GROWTH



2. TRAFFIC CHARACTERISTICS (BY DIRECTION)

| Parameter | All - Day | Mon. - Fri. | Sat. | Sun. |
|--------------------------------------|-----------|-------------|-----------|-----------|
| SOUTH BOUND | | | | |
| A.A.D.T. | 12810 | 13060 | 12890 | 11870 |
| R 12 / 24 - % | 66.9 | 68.1 | 64.5 | 63.1 |
| R 16 / 24 - % | 85 | 86.1 | 82.5 | 81.4 |
| AM Peak Hour | 0800-0900 | 0800-0900 | 0900-1000 | 0900-1000 |
| One-way flow at AM peak hour | 800 | 890 | 700 | 560 |
| T - % (AM) | - | 10.6 | - | - |
| PM Peak Hour | 1800-1900 | 1800-1900 | 1700-1800 | 1700-1800 |
| One-way flow at PM peak hour | 710 | 740 | 720 | 670 |
| T - % (PM) | - | 12.8 | - | - |
| Prop.of commercial vehicles - 16 hr. | - | 13.2 | - | - |
| NORTH BOUND | | | | |
| A.A.D.T. | 12560 | 12860 | 12440 | 11560 |
| R 12 / 24 - % | 72.3 | 73.7 | 69.5 | 67.9 |
| R 16 / 24 - % | 87.7 | 88.6 | 85.9 | 84.8 |
| AM Peak Hour | 0800-0900 | 0800-0900 | 0900-1000 | 0900-1000 |
| One-way flow at AM peak hour | 820 | 940 | 690 | 600 |
| T - % (AM) | - | 8.7 | - | - |
| PM Peak Hour | 1700-1800 | 1700-1800 | 1800-1900 | 1700-1800 |
| One-way flow at PM peak hour | 910 | 960 | 830 | 780 |
| T - % (PM) | - | 10.1 | - | - |
| Prop.of commercial vehicles - 16 hr. | - | 11.9 | - | - |

3. OTHER INFORMATION AND COMMENT

4. Vehicle classification and occupancy - Monday to Friday

| Time | | Class of vehicle | | | | | | | | | |
|------------------------|-----|------------------|---------|------|---------|------|------------|-------|---------|---------|------|
| | | Motor | Private | Taxi | Private | PLB | Goods veh. | | Non | Fr. Bus | |
| | | Cycle | Car | | LB | | Light | M & H | Fr. Bus | SD | DD |
| 0700-0800 | Pro | 2.7 | 26.7 | 43.7 | 1.3 | 9.1 | 4.9 | 0.4 | 3.6 | 0.1 | 7.5 |
| | Ocp | 1.2 | 1.4 | 1.9 | 7.2 | 13.1 | 1.9 | 2.0 | 17.6 | 29.0 | 54.1 |
| 0800-0900 Peak hour | Pro | 3.3 | 49.2 | 23.8 | 2.4 | 5.7 | 6.1 | 0.4 | 1.5 | 0.2 | 7.4 |
| | Ocp | 1.0 | 1.3 | 2.1 | 2.3 | 14.8 | 1.8 | 1.5 | 5.7 | 33.5 | 52.5 |
| 0900-1000 | Pro | 2.7 | 37.8 | 22.5 | 2.4 | 9.4 | 12.6 | 1.1 | 1.3 | 0.1 | 10.1 |
| | Ocp | 1.0 | 1.2 | 2.1 | 2.3 | 8.9 | 1.6 | 1.0 | 8.0 | 12.0 | 26.3 |
| 1000-1100 | Pro | 1.6 | 31.1 | 28.8 | 2.9 | 9.3 | 11.5 | 1.0 | 2.9 | 0.2 | 10.7 |
| | Ocp | 1.0 | 1.4 | 1.9 | 2.6 | 9.7 | 1.4 | 1.3 | 6.6 | 12.5 | 20.6 |
| 1100-1200 | Pro | 2.9 | 33.9 | 25.6 | 4.2 | 9.0 | 11.5 | 1.3 | 1.3 | 0.2 | 10.2 |
| | Ocp | 1.1 | 1.5 | 2.1 | 2.5 | 9.3 | 1.4 | 1.0 | 1.3 | 11.3 | 22.3 |
| 1200-1300 | Pro | 3.8 | 38.1 | 21.5 | 2.4 | 9.7 | 13.6 | 0.6 | 0.6 | 0.3 | 9.4 |
| | Ocp | 1.2 | 1.6 | 2.2 | 3.3 | 11.3 | 1.4 | 2.0 | 1.0 | 9.8 | 19.0 |
| 1300-1400 | Pro | 3.1 | 32.2 | 27.7 | 2.0 | 12.3 | 10.9 | 1.1 | 1.4 | 0.2 | 9.1 |
| | Ocp | 1.0 | 1.6 | 1.9 | 2.7 | 9.4 | 1.9 | 1.8 | 12.4 | 7.3 | 19.4 |
| 1400-1500 | Pro | 3.3 | 33.3 | 24.9 | 2.7 | 8.1 | 14.4 | 1.8 | 1.2 | 0.4 | 9.8 |
| | Ocp | 1.0 | 1.4 | 2.0 | 2.8 | 10.9 | 1.7 | 1.3 | 1.0 | 11.8 | 21.7 |
| 1500-1600 | Pro | 1.9 | 33.7 | 23.8 | 3.8 | 9.0 | 14.8 | 1.1 | 2.7 | 0.3 | 8.9 |
| | Ocp | 1.4 | 1.5 | 2.2 | 3.1 | 10.9 | 1.5 | 2.0 | 10.1 | 15.8 | 27.7 |
| 1600-1700 | Pro | 3.5 | 31.8 | 18.9 | 4.7 | 10.0 | 12.7 | 0.9 | 6.5 | 0.1 | 10.9 |
| | Ocp | 1.2 | 1.5 | 1.8 | 2.4 | 9.4 | 1.7 | 1.3 | 9.4 | 27.0 | 34.0 |
| 1700-1800 | Pro | 7.7 | 36.6 | 25.2 | 2.5 | 8.9 | 8.2 | 0.0 | 2.7 | 0.2 | 8.1 |
| | Ocp | 1.2 | 1.5 | 2.1 | 3.5 | 10.9 | 1.6 | 0.0 | 11.8 | 23.8 | 45.2 |
| 1800-1900 | Pro | 6.5 | 47.4 | 19.4 | 0.7 | 8.9 | 6.9 | 0.2 | 1.0 | 0.2 | 8.8 |
| | Ocp | 1.3 | 1.6 | 2.1 | 4.0 | 12.8 | 1.8 | 1.0 | 7.8 | 14.3 | 53.1 |
| 1900-2000 | Pro | 3.5 | 45.5 | 24.2 | 0.9 | 9.2 | 5.2 | 0.6 | 0.9 | 0.0 | 10.1 |
| | Ocp | 1.1 | 1.3 | 2.4 | 2.0 | 8.1 | 1.4 | 2.0 | 3.3 | 0.0 | 33.1 |
| 2000-2100 | Pro | 5.9 | 36.5 | 31.2 | 0.9 | 10.2 | 3.7 | 0.0 | 0.3 | 0.2 | 11.1 |
| | Ocp | 1.2 | 1.4 | 1.8 | 2.7 | 9.4 | 2.0 | 0.0 | 1.0 | 6.5 | 29.0 |
| 2100-2200 | Pro | 3.7 | 36.3 | 28.3 | 0.0 | 11.7 | 2.5 | 0.0 | 0.0 | 0.5 | 17.2 |
| | Ocp | 1.2 | 1.5 | 2.2 | 0.0 | 9.9 | 2.0 | 0.0 | 0.0 | 13.3 | 29.1 |
| 2200-2300 | Pro | 2.5 | 38.0 | 27.0 | 1.0 | 12.0 | 3.5 | 0.5 | 0.5 | 0.1 | 15.0 |
| | Ocp | 1.0 | 1.8 | 1.7 | 1.0 | 7.4 | 1.6 | 2.0 | 1.0 | 7.0 | 29.1 |
| 16 hours | Pro | 3.8 | 37.0 | 26.1 | 2.2 | 9.3 | 9.1 | 0.7 | 1.9 | 0.2 | 9.7 |
| | Ocp | 1.1 | 1.5 | 2.0 | 2.9 | 10.4 | 1.6 | 1.5 | 9.4 | 15.7 | 32.6 |

Legend

- Pro.** Proportion of vehicles in % (Sum may not add up to 100% due to figure rounding)
- Ocp.** Average occupancy of vehicles
- M&H** Medium and Heavy