

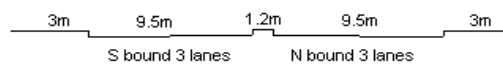
YEAR 2012

CORE STATION 3014

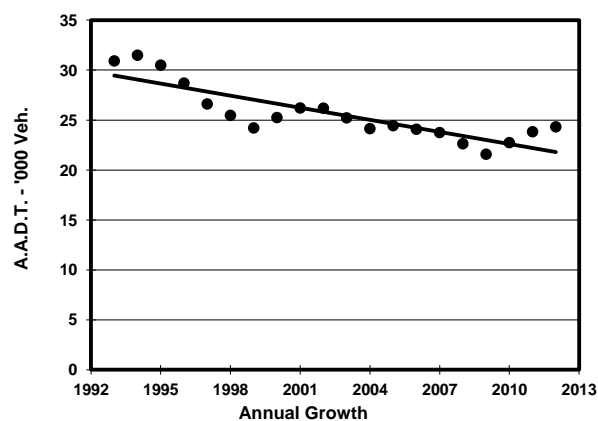
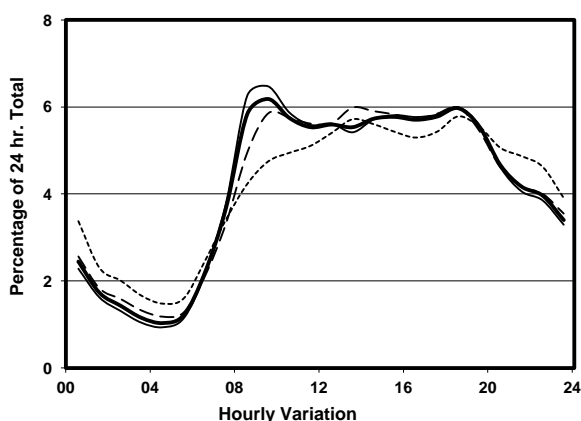
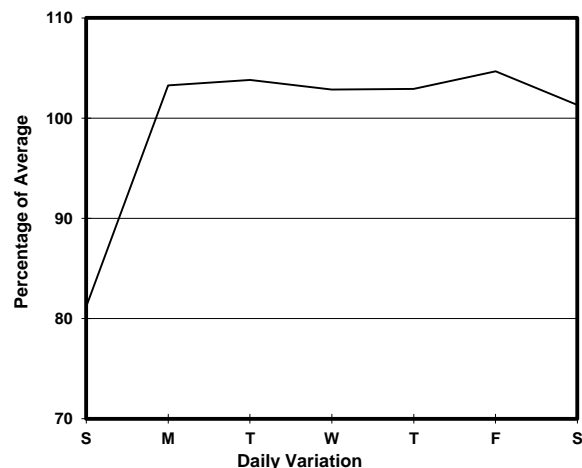
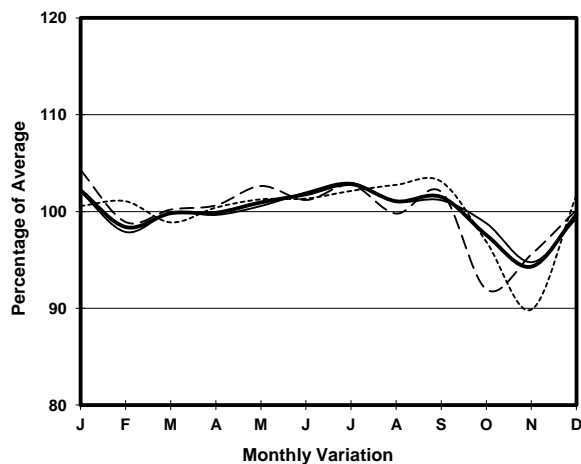
ROAD NETWORK MAJOR

ROAD TYPE DISTRICT DISTRIBUTOR

LINK MA TAU WAI RD & TO KWA WAN RD (from SAN LAU ST & BAILEY ST to CHI KIANG ST)



1. TRAFFIC FLOW VARIATION AND GROWTH



2. TRAFFIC CHARACTERISTICS (BY DIRECTION)

Parameter	All - Day	Mon. - Fri.	Sat.	Sun.
SOUTH BOUND				
A.A.D.T.	18450	19330	18990	14830
R 12 / 24 - %	67.6	68.8	66.7	60.9
R 16 / 24 - %	85.5	86.4	84.5	80.8
AM Peak Hour	0900-1000	0800-0900	0900-1000	0900-1000
One-way flow at AM peak hour	1190	1320	1140	700
T - % (AM)	-	20.8	-	-
PM Peak Hour	1800-1900	1800-1900	1800-1900	1800-1900
One-way flow at PM peak hour	1110	1170	1170	850
T - % (PM)	-	19.2	-	-
Prop.of commercial vehicles - 16 hr.	-	18	-	-
NORTH BOUND				
A.A.D.T.	5870	6090	5910	5140
R 12 / 24 - %	65.3	65.8	65.3	61.7
R 16 / 24 - %	85.1	85.6	84.6	82.4
AM Peak Hour	0900-1000	0900-1000	0900-1000	0900-1000
One-way flow at AM peak hour	310	330	320	250
T - % (AM)	-	39.9	-	-
PM Peak Hour	1600-1700	1600-1700	1600-1700	1800-1900
One-way flow at PM peak hour	350	380	340	300
T - % (PM)	-	20.5	-	-
Prop.of commercial vehicles - 16 hr.	-	27.3	-	-

3. OTHER INFORMATION AND COMMENT

4. Vehicle classification and occupancy - Monday to Friday

Time		Class of vehicle									
		Motor Cycle	Private Car	Taxi	Private LB	PLB	Goods veh.		Non Fr. Bus	Fr. Bus	
							Light	M & H		SD	DD
0700-0800	Pro	1.6	13.5	17.8	3.2	16.7	12.4	4.3	5.9	0.1	24.3
	Ocp	1.0	1.4	2.0	4.2	8.3	1.3	1.4	12.1	23.0	22.2
0800-0900	Pro	1.9	21.6	28.0	2.1	7.2	16.0	3.7	5.3	0.1	14.1
	Ocp	1.1	1.5	2.0	8.3	10.5	1.6	1.6	15.7	24.0	26.2
0900-1000 Peak hour	Pro	2.6	25.2	25.4	0.0	7.2	17.5	3.1	5.9	0.1	13.0
	Ocp	1.0	1.5	1.9	0.0	8.8	1.7	1.3	10.0	13.0	17.3
1000-1100	Pro	1.4	13.6	27.2	0.7	10.9	26.2	0.7	5.1	0.2	14.0
	Ocp	1.0	1.4	2.0	3.5	4.8	1.6	1.0	4.4	8.5	12.4
1100-1200	Pro	1.3	17.8	28.9	0.6	11.4	21.4	3.9	2.6	0.0	12.1
	Ocp	1.0	1.6	1.8	1.0	6.1	1.6	1.8	7.9	0.0	13.4
1200-1300	Pro	3.4	17.4	23.3	2.2	12.1	18.1	3.1	9.0	0.0	11.3
	Ocp	1.1	1.5	1.6	6.7	6.2	1.5	1.8	9.9	0.0	12.1
1300-1400	Pro	1.2	19.6	25.5	0.0	8.3	23.0	2.5	7.4	0.0	12.6
	Ocp	1.0	1.4	1.7	0.0	6.9	1.6	1.8	17.3	0.0	13.6
1400-1500	Pro	2.9	16.1	20.9	1.6	12.5	26.0	4.2	2.9	0.0	12.9
	Ocp	1.1	1.4	1.6	2.8	6.6	1.7	1.6	10.4	0.0	11.3
1500-1600	Pro	1.6	19.1	21.7	1.0	13.3	26.9	1.6	1.3	0.0	13.6
	Ocp	1.0	1.5	1.6	4.0	7.3	1.5	1.0	4.0	0.0	12.7
1600-1700	Pro	2.6	23.9	19.0	2.3	11.5	22.6	1.0	2.6	0.2	14.4
	Ocp	1.0	1.3	1.5	2.7	9.5	1.5	1.7	6.9	13.5	15.2
1700-1800	Pro	5.7	20.4	31.5	0.7	9.0	13.1	0.7	3.3	0.1	15.6
	Ocp	1.0	1.7	1.7	3.0	9.6	1.7	1.5	14.1	9.0	17.1
1800-1900	Pro	4.0	34.2	25.0	0.0	10.5	4.4	0.8	3.2	0.1	17.7
	Ocp	1.1	1.8	2.0	0.0	11.2	1.4	1.5	22.3	13.0	28.3
1900-2000	Pro	1.8	28.9	35.6	0.6	10.7	8.5	0.3	1.8	0.2	11.5
	Ocp	1.2	1.5	1.7	3.0	11.2	1.7	2.0	15.5	13.5	21.9
2000-2100	Pro	3.5	20.7	35.9	0.8	18.0	3.9	1.6	0.8	0.0	14.8
	Ocp	1.3	1.6	1.6	1.5	7.7	1.5	2.5	1.0	0.0	13.5
2100-2200	Pro	1.7	25.1	38.9	0.4	13.4	2.6	0.0	2.2	0.0	15.8
	Ocp	1.0	1.6	1.4	8.0	8.4	1.3	0.0	1.2	0.0	10.8
2200-2300	Pro	1.8	18.7	40.4	0.9	16.9	1.8	0.9	0.4	0.0	18.2
	Ocp	1.0	1.5	1.6	4.0	7.9	1.5	2.5	1.0	0.0	11.6
16 hours	Pro	2.4	21.1	27.6	1.0	11.4	16.1	2.1	3.9	0.1	14.3
	Ocp	1.1	1.5	1.7	4.6	8.1	1.6	1.6	11.5	13.8	16.6

Legend

- Pro.** Proportion of vehicles in % (Sum may not add up to 100% due to figure rounding)
- Ocp.** Average occupancy of vehicles
- M&H** Medium and Heavy