

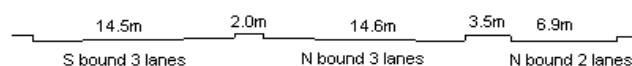
YEAR 2012

CORE STATION 3024

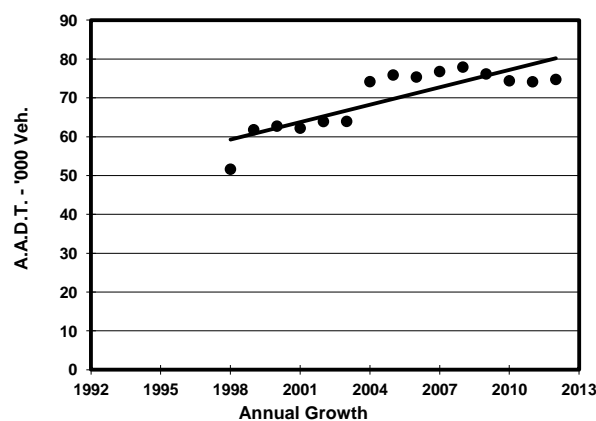
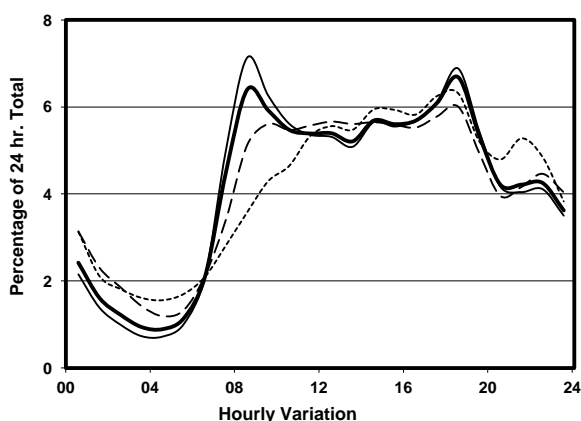
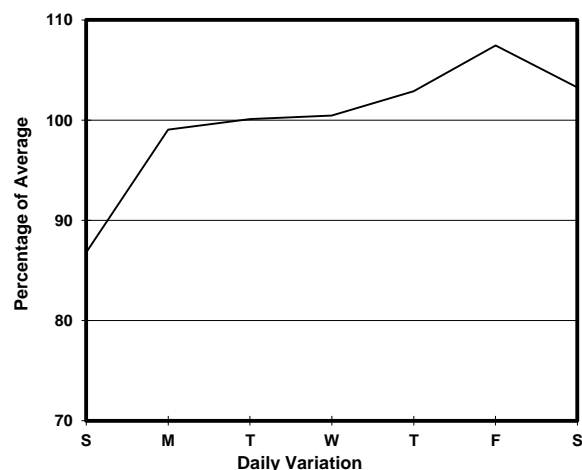
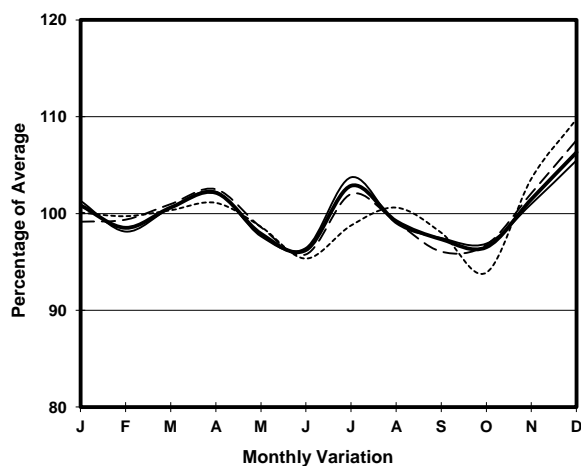
ROAD NETWORK MAJOR

ROAD TYPE URBAN TRUNK ROAD

LINK WEST KOWLOON HIGHWAY (from SLIP RDS TO & FROM LIN CHEUNG RD to HING WAH ST W)



1. TRAFFIC FLOW VARIATION AND GROWTH



2. TRAFFIC CHARACTERISTICS (BY DIRECTION)

Parameter	All - Day	Mon. - Fri.	Sat.	Sun.
SOUTH BOUND				
A.A.D.T.	45790	47010	47530	40160
R 12 / 24 - %	70.6	72.4	67.3	63.6
R 16 / 24 - %	86.5	87.8	83.3	82.7
AM Peak Hour	0800-0900	0800-0900	0900-1000	0900-1000
One-way flow at AM peak hour	3380	3870	3110	1900
T - % (AM)	-	21.1	-	-
PM Peak Hour	1800-1900	1800-1900	1800-1900	1800-1900
One-way flow at PM peak hour	2930	3050	2780	2610
T - % (PM)	-	9.5	-	-
Prop.of commercial vehicles - 16 hr.	-	12.6	-	-
NORTH BOUND				
A.A.D.T.	28950	29740	30100	25260
R 12 / 24 - %	64	65.3	61.5	59.4
R 16 / 24 - %	85.4	86.9	81.5	81.2
AM Peak Hour	0800-0900	0800-0900	0900-1000	0900-1000
One-way flow at AM peak hour	1400	1600	1250	920
T - % (AM)	-	16.4	-	-
PM Peak Hour	1800-1900	1800-1900	1700-1800	1700-1800
One-way flow at PM peak hour	2070	2230	1960	1590
T - % (PM)	-	17.1	-	-
Prop.of commercial vehicles - 16 hr.	-	12.6	-	-

3. OTHER INFORMATION AND COMMENT

4. Vehicle classification and occupancy - Monday to Friday

Time		Class of vehicle									
		Motor Cycle	Private Car	Taxi	Private LB	PLB	Goods veh.		Non Fr. Bus	Fr. Bus	
							Light	M & H		SD	DD
0700-0800	Pro	3.6	31.5	27.6	0.9	0.0	16.0	8.1	6.5	0.1	5.7
	Ocp	1.1	1.4	2.3	7.2	0.0	1.4	1.3	17.2	9.0	52.0
0800-0900 Peak hour	Pro	2.5	47.6	18.6	0.4	0.0	11.1	5.3	9.0	0.1	5.6
	Ocp	1.1	1.3	2.3	4.6	0.0	1.7	1.3	40.0	14.0	59.3
0900-1000	Pro	1.3	43.2	23.7	0.2	0.0	18.8	5.5	3.2	0.1	4.0
	Ocp	1.0	1.4	2.1	5.0	0.0	1.4	1.4	18.7	12.0	34.2
1000-1100	Pro	1.7	43.0	22.8	0.6	0.0	19.0	5.8	3.4	0.1	3.7
	Ocp	1.1	1.5	2.4	2.8	0.0	1.5	1.4	17.8	6.7	29.3
1100-1200	Pro	1.7	47.7	21.2	0.7	0.0	18.3	4.2	2.4	0.1	3.6
	Ocp	1.0	1.4	2.5	1.4	0.0	1.4	1.5	22.2	11.8	31.0
1200-1300	Pro	1.5	47.4	21.2	0.5	0.0	18.7	3.7	3.9	0.1	3.2
	Ocp	1.0	1.5	2.5	1.6	0.0	1.7	1.4	17.5	6.3	27.7
1300-1400	Pro	2.0	41.2	20.8	0.8	0.0	21.6	4.4	5.3	0.1	3.9
	Ocp	1.1	1.4	2.8	1.1	0.0	1.6	1.4	19.3	13.6	27.0
1400-1500	Pro	1.6	46.6	21.9	0.4	0.0	16.9	5.9	3.4	0.1	3.2
	Ocp	1.0	1.7	2.7	3.0	0.0	1.5	1.4	13.1	12.0	29.0
1500-1600	Pro	1.1	50.4	17.7	0.8	0.0	17.1	5.1	4.6	0.1	3.0
	Ocp	1.0	1.5	2.9	2.0	0.0	1.4	1.4	24.4	10.5	28.9
1600-1700	Pro	1.0	50.3	18.2	0.7	0.0	18.7	3.6	3.2	0.1	4.1
	Ocp	1.2	1.4	2.4	1.7	0.0	1.6	1.4	13.2	12.3	32.6
1700-1800	Pro	1.9	54.2	18.9	0.9	0.0	13.7	2.8	3.1	0.1	4.5
	Ocp	1.2	1.4	2.4	3.9	0.0	1.6	1.3	17.2	7.0	41.7
1800-1900	Pro	2.6	59.9	16.6	0.2	0.0	7.8	1.8	6.7	0.1	4.3
	Ocp	1.2	1.4	2.2	3.0	0.0	1.5	1.3	34.2	14.0	60.7
1900-2000	Pro	1.3	66.6	17.8	0.2	0.0	4.3	0.6	5.1	0.1	4.1
	Ocp	1.0	1.5	2.5	4.5	0.0	1.6	1.2	18.9	13.3	50.2
2000-2100	Pro	1.0	55.6	27.2	0.0	0.0	4.2	1.0	5.5	0.1	5.4
	Ocp	1.1	1.5	2.1	0.0	0.0	1.2	1.4	19.7	18.3	39.2
2100-2200	Pro	2.0	55.8	27.8	0.1	0.0	4.8	0.7	3.3	0.1	5.3
	Ocp	1.4	1.5	2.5	3.0	0.0	1.4	1.2	9.9	16.5	37.0
2200-2300	Pro	1.0	51.9	35.5	0.0	0.0	3.3	1.1	2.8	0.2	4.4
	Ocp	1.0	1.6	2.3	0.0	0.0	1.2	1.2	14.1	8.4	44.8
16 hours	Pro	1.7	49.7	21.8	0.5	0.0	13.7	3.8	4.5	0.1	4.2
	Ocp	1.1	1.5	2.4	3.0	0.0	1.5	1.4	23.4	11.9	40.9

Legend

- Pro.** Proportion of vehicles in % (Sum may not add up to 100% due to figure rounding)
Ocp. Average occupancy of vehicles
M&H Medium and Heavy