

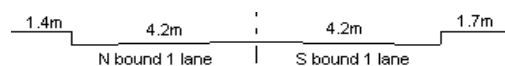
YEAR 2012

CORE STATION 5014

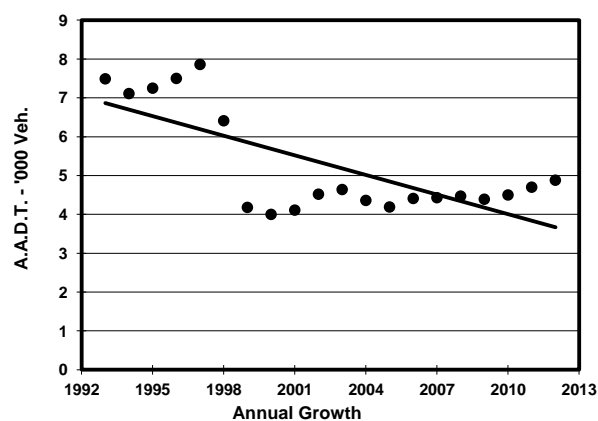
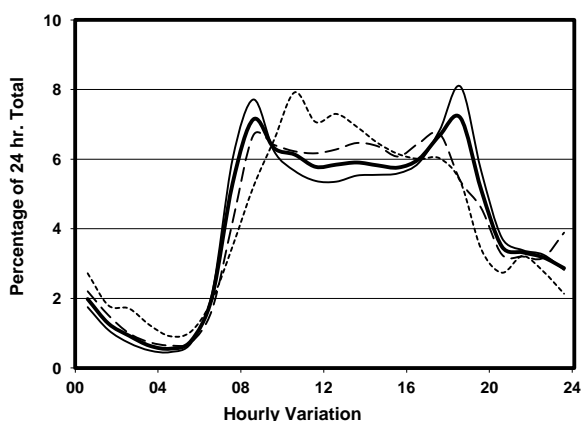
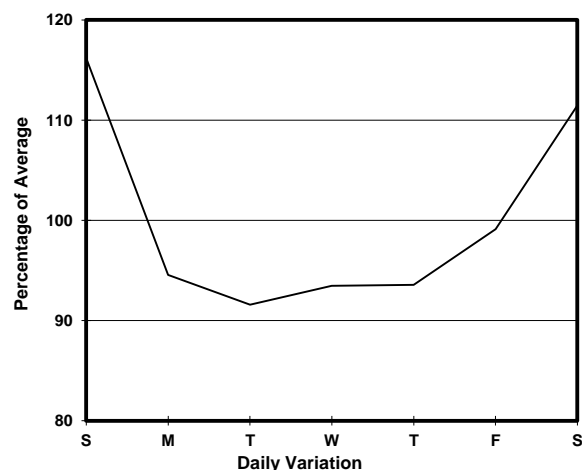
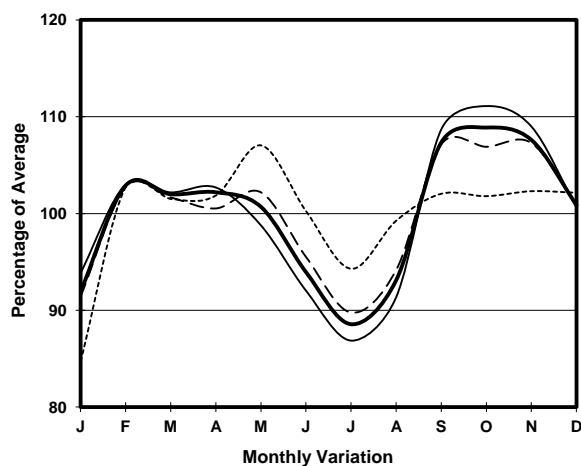
ROAD NETWORK MAJOR

ROAD TYPE RURAL ROAD

LINK ROUTE TWISK (from CHUEN LUNG to CHEUNG PEI SHAN RA)



1. TRAFFIC FLOW VARIATION AND GROWTH



2. TRAFFIC CHARACTERISTICS (BY DIRECTION)

| Parameter | All - Day | Mon. - Fri. | Sat. | Sun. |
|--------------------------------------|-----------|-------------|-----------|-----------|
| SOUTH BOUND | | | | |
| A.A.D.T. | 2450 | 2310 | 2680 | 2740 |
| R 12 / 24 - % | 75.8 | 76.4 | 74.1 | 75.3 |
| R 16 / 24 - % | 89.1 | 90 | 87.7 | 86.8 |
| AM Peak Hour | 0800-0900 | 0800-0900 | 0800-0900 | 0900-1000 |
| One-way flow at AM peak hour | 190 | 210 | 190 | 160 |
| T - % (AM) | - | 3.6 | - | - |
| PM Peak Hour | 1800-1900 | 1800-1900 | 1700-1800 | 1700-1800 |
| One-way flow at PM peak hour | 190 | 200 | 200 | 200 |
| T - % (PM) | - | 5.2 | - | - |
| Prop.of commercial vehicles - 16 hr. | - | 3.5 | - | - |
| NORTH BOUND | | | | |
| A.A.D.T. | 2430 | 2260 | 2730 | 2850 |
| R 12 / 24 - % | 71.9 | 71.2 | 72.8 | 73.7 |
| R 16 / 24 - % | 88.8 | 89.7 | 87.5 | 86.4 |
| AM Peak Hour | 0900-1000 | 0900-1000 | 0900-1000 | 0900-1000 |
| One-way flow at AM peak hour | 160 | 150 | 180 | 200 |
| T - % (AM) | - | 4.2 | - | - |
| PM Peak Hour | 1800-1900 | 1800-1900 | 1600-1700 | 1600-1700 |
| One-way flow at PM peak hour | 160 | 170 | 180 | 160 |
| T - % (PM) | - | 1.5 | - | - |
| Prop.of commercial vehicles - 16 hr. | - | 3.6 | - | - |

3. OTHER INFORMATION AND COMMENT

4. Vehicle classification and occupancy - Monday to Friday

| Time | | Class of vehicle | | | | | | | | | |
|------------------------|-----|------------------|---------|------|---------|------|------------|-------|---------|---------|-----|
| | | Motor | Private | Taxi | Private | PLB | Goods veh. | | Non | Fr. Bus | |
| | | Cycle | Car | | LB | | Light | M & H | Fr. Bus | SD | DD |
| 0700-0800 | Pro | 13.2 | 41.2 | 11.8 | 0.0 | 4.4 | 26.5 | 1.5 | 0.0 | 1.5 | 0.0 |
| | Ocp | 1.0 | 1.7 | 1.3 | 0.0 | 8.3 | 1.3 | 1.0 | 0.0 | 30.3 | 0.0 |
| 0800-0900 | Pro | 3.9 | 53.9 | 1.3 | 1.3 | 5.3 | 30.3 | 0.0 | 2.6 | 1.3 | 0.0 |
| | Ocp | 1.0 | 1.5 | 1.0 | 2.0 | 11.5 | 1.7 | 0.0 | 5.5 | 18.0 | 0.0 |
| 0900-1000 | Pro | 5.6 | 49.3 | 1.4 | 0.0 | 7.0 | 32.4 | 2.8 | 0.0 | 1.4 | 0.0 |
| | Ocp | 1.0 | 1.4 | 2.0 | 0.0 | 6.0 | 1.9 | 1.0 | 0.0 | 17.3 | 0.0 |
| 1000-1100 | Pro | 3.3 | 61.2 | 3.3 | 3.3 | 3.3 | 19.8 | 0.0 | 5.0 | 0.8 | 0.0 |
| | Ocp | 1.0 | 1.5 | 1.0 | 3.0 | 5.0 | 1.8 | 0.0 | 6.3 | 8.0 | 0.0 |
| 1100-1200 | Pro | 5.1 | 47.5 | 0.0 | 3.4 | 5.1 | 37.3 | 0.0 | 0.0 | 1.7 | 0.0 |
| | Ocp | 1.0 | 1.4 | 0.0 | 5.0 | 4.3 | 1.6 | 0.0 | 0.0 | 8.0 | 0.0 |
| 1200-1300 | Pro | 1.8 | 47.8 | 5.3 | 0.0 | 8.9 | 33.6 | 1.8 | 0.0 | 0.9 | 0.0 |
| | Ocp | 1.0 | 1.4 | 1.3 | 0.0 | 3.2 | 1.6 | 2.0 | 0.0 | 7.0 | 0.0 |
| 1300-1400 | Pro | 6.0 | 56.0 | 4.0 | 0.0 | 6.0 | 22.0 | 2.0 | 2.0 | 2.0 | 0.0 |
| | Ocp | 1.0 | 1.5 | 1.0 | 0.0 | 4.3 | 1.4 | 1.0 | 3.0 | 4.8 | 0.0 |
| 1400-1500 | Pro | 2.6 | 44.7 | 14.5 | 2.6 | 2.6 | 28.9 | 2.6 | 0.0 | 1.3 | 0.0 |
| | Ocp | 1.0 | 1.4 | 1.5 | 1.0 | 6.0 | 1.3 | 1.5 | 0.0 | 3.5 | 0.0 |
| 1500-1600 | Pro | 2.3 | 36.6 | 4.6 | 4.6 | 11.4 | 38.9 | 0.0 | 0.0 | 1.7 | 0.0 |
| | Ocp | 1.0 | 1.3 | 1.0 | 1.0 | 2.0 | 1.5 | 0.0 | 0.0 | 7.0 | 0.0 |
| 1600-1700 | Pro | 4.9 | 32.9 | 3.3 | 1.6 | 4.9 | 46.1 | 4.9 | 0.0 | 1.2 | 0.0 |
| | Ocp | 1.0 | 1.7 | 1.0 | 2.0 | 5.7 | 1.6 | 1.3 | 0.0 | 8.0 | 0.0 |
| 1700-1800 | Pro | 6.6 | 54.1 | 3.3 | 0.0 | 6.6 | 27.9 | 0.0 | 0.0 | 1.6 | 0.0 |
| | Ocp | 1.0 | 1.4 | 1.0 | 0.0 | 5.8 | 1.6 | 0.0 | 0.0 | 9.0 | 0.0 |
| 1800-1900 Peak hour | Pro | 14.1 | 52.7 | 1.3 | 0.0 | 5.1 | 23.2 | 1.3 | 1.3 | 1.0 | 0.0 |
| | Ocp | 1.0 | 1.4 | 1.0 | 0.0 | 4.8 | 1.3 | 2.0 | 1.0 | 9.3 | 0.0 |
| 1900-2000 | Pro | 7.2 | 66.9 | 6.0 | 1.2 | 7.2 | 8.4 | 1.2 | 1.2 | 0.9 | 0.0 |
| | Ocp | 1.0 | 1.3 | 1.8 | 3.0 | 3.8 | 1.1 | 1.0 | 1.0 | 8.3 | 0.0 |
| 2000-2100 | Pro | 7.8 | 60.8 | 3.9 | 0.0 | 9.8 | 15.7 | 0.0 | 0.0 | 2.0 | 0.0 |
| | Ocp | 1.0 | 1.4 | 1.0 | 0.0 | 3.8 | 1.3 | 0.0 | 0.0 | 4.5 | 0.0 |
| 2100-2200 | Pro | 7.2 | 67.1 | 0.0 | 0.0 | 7.2 | 16.8 | 0.0 | 0.0 | 1.8 | 0.0 |
| | Ocp | 1.0 | 1.5 | 0.0 | 0.0 | 2.7 | 1.7 | 0.0 | 0.0 | 3.3 | 0.0 |
| 2200-2300 | Pro | 8.7 | 56.8 | 10.9 | 0.0 | 8.7 | 10.9 | 2.2 | 0.0 | 1.6 | 0.0 |
| | Ocp | 1.5 | 1.6 | 1.8 | 0.0 | 2.5 | 1.0 | 1.0 | 0.0 | 2.7 | 0.0 |
| 16 hours | Pro | 6.4 | 51.8 | 4.8 | 1.1 | 6.2 | 26.2 | 1.3 | 0.8 | 1.4 | 0.0 |
| | Ocp | 1.0 | 1.5 | 1.4 | 2.5 | 4.8 | 1.5 | 1.3 | 4.4 | 9.8 | 0.0 |

Legend

- Pro.** Proportion of vehicles in % (Sum may not add up to 100% due to figure rounding)
- Ocp.** Average occupancy of vehicles
- M&H** Medium and Heavy