

YEAR

2012

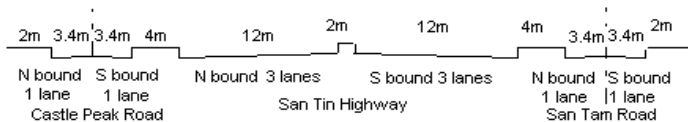
LINK SAN TIN HIGHWAY, CASTLE PEAK RD & SAN TAM RD
(from KAM TIN RD to FAIRVIEW PARK BOULEVARD)

CORE STATION
ROAD NETWORK
ROAD TYPE

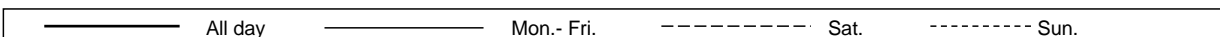
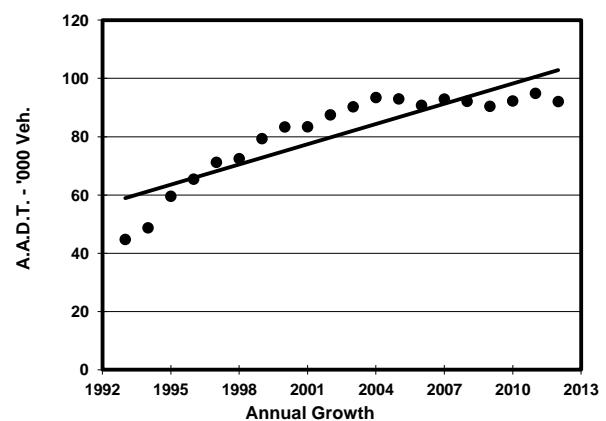
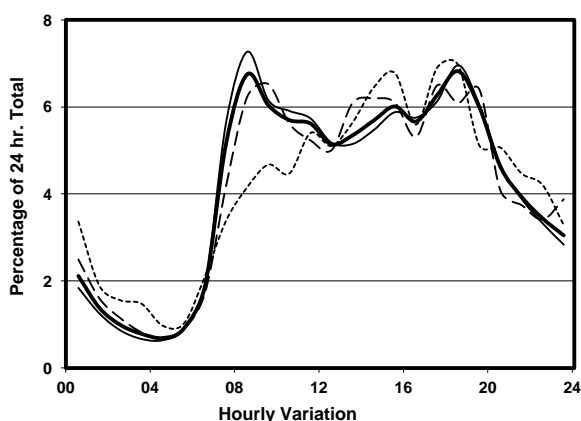
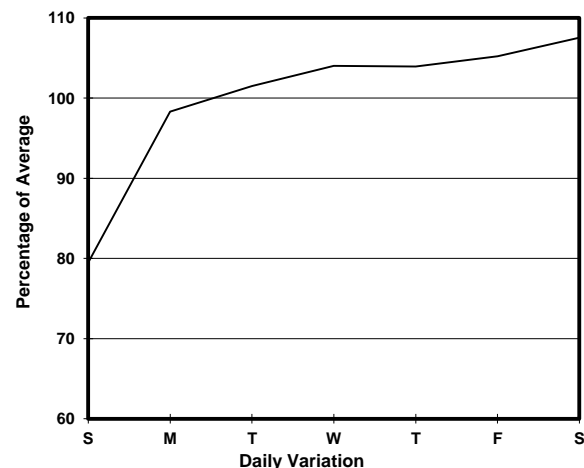
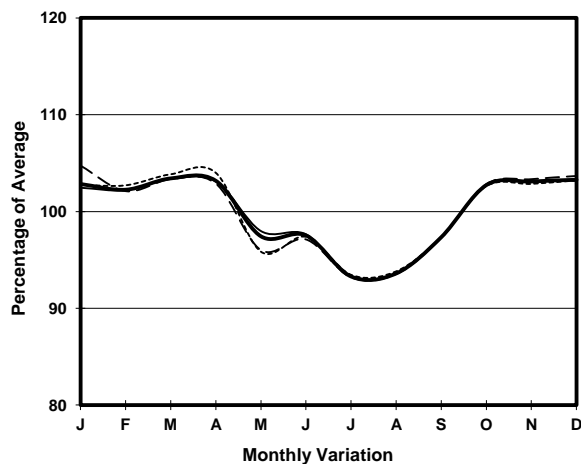
5016

MAJOR

PRIMARY DISTRIBUTOR



1. TRAFFIC FLOW VARIATION AND GROWTH



2. TRAFFIC CHARACTERISTICS (BY DIRECTION)

Parameter	All - Day	Mon. - Fri.	Sat.	Sun.
SOUTH BOUND				
A.A.D.T.	44490	45790	49800	36020
R 12 / 24 - %	70.2	71.1	68.8	65.8
R 16 / 24 - %	88	88.9	86.1	84.8
AM Peak Hour	0800-0900	0800-0900	0900-1000	0900-1000
One-way flow at AM peak hour	3100	3410	3550	1810
T - % (AM)	-	25.1	-	-
PM Peak Hour	1800-1900	1800-1900	1700-1800	1800-1900
One-way flow at PM peak hour	3050	3120	3300	2980
T - % (PM)	-	30.6	-	-
Prop.of commercial vehicles - 16 hr.	-	29.3	-	-
NORTH BOUND				
A.A.D.T.	47570	49620	50170	38320
R 12 / 24 - %	70.3	71.3	69.4	65.2
R 16 / 24 - %	88.5	89.4	87.5	83.9
AM Peak Hour	0800-0900	0800-0900	0900-1000	0900-1000
One-way flow at AM peak hour	3120	3520	2980	1670
T - % (AM)	-	27.8	-	-
PM Peak Hour	1800-1900	1800-1900	1700-1800	1700-1800
One-way flow at PM peak hour	3230	3520	3200	2880
T - % (PM)	-	25.4	-	-
Prop.of commercial vehicles - 16 hr.	-	28.2	-	-

3. OTHER INFORMATION AND COMMENT

4. Vehicle classification and occupancy - Monday to Friday

Time		Class of vehicle									
		Motor Cycle	Private Car	Taxi	Private LB	PLB	Goods veh.		Non Fr. Bus	Fr. Bus	
							Light	M & H		SD	DD
0700-0800	Pro	1.7	33.8	7.1	1.0	6.7	18.4	23.9	5.1	0.2	2.1
	Ocp	1.1	1.6	2.1	11.6	14.0	1.6	1.1	24.9	28.7	62.8
0800-0900 Peak hour	Pro	0.8	45.7	7.0	0.7	3.8	15.7	21.6	3.1	0.2	1.4
	Ocp	1.0	1.4	2.0	7.0	14.4	1.6	1.1	23.1	34.4	58.4
0900-1000	Pro	0.5	40.3	5.8	0.7	3.8	19.4	25.4	2.5	0.2	1.5
	Ocp	1.0	1.4	1.8	2.6	11.8	1.4	1.2	18.2	33.1	39.6
1000-1100	Pro	0.2	34.7	5.5	0.5	3.8	21.9	29.5	2.3	0.1	1.5
	Ocp	1.0	1.5	2.0	3.0	11.0	1.5	1.2	18.6	22.9	30.9
1100-1200	Pro	0.3	33.8	6.0	0.6	4.7	22.5	27.8	2.8	0.2	1.4
	Ocp	1.0	1.4	2.4	1.9	10.5	1.4	1.2	16.8	28.0	30.6
1200-1300	Pro	0.8	36.6	6.6	0.6	3.5	19.8	27.6	2.8	0.1	1.7
	Ocp	1.0	1.4	2.1	4.6	10.3	1.6	1.2	10.2	16.4	24.3
1300-1400	Pro	0.2	36.0	5.5	0.2	4.0	20.5	29.0	2.8	0.2	1.8
	Ocp	1.0	1.5	2.0	1.5	10.1	1.6	1.1	15.0	22.3	29.0
1400-1500	Pro	0.5	34.7	7.2	0.5	3.4	23.1	26.8	2.1	0.2	1.6
	Ocp	1.0	1.5	2.1	1.2	10.3	1.4	1.1	21.3	16.3	25.4
1500-1600	Pro	0.7	36.4	5.6	0.5	3.6	20.6	28.5	2.5	0.1	1.6
	Ocp	1.0	1.4	2.0	2.9	11.0	1.5	1.2	11.9	13.2	27.1
1600-1700	Pro	0.7	40.7	6.4	0.7	3.6	18.3	24.9	3.1	0.2	1.5
	Ocp	1.0	1.5	2.1	5.0	13.0	1.5	1.2	17.4	15.4	32.6
1700-1800	Pro	0.5	40.8	7.1	1.2	3.5	19.0	23.1	2.9	0.2	1.7
	Ocp	1.0	1.4	2.2	4.6	13.8	1.5	1.1	20.2	27.5	43.1
1800-1900	Pro	0.8	49.6	5.6	0.1	4.4	11.5	22.9	3.5	0.1	1.5
	Ocp	1.0	1.6	2.5	9.5	15.2	1.4	1.0	24.8	30.8	53.7
1900-2000	Pro	0.6	53.7	6.5	0.5	5.4	11.4	17.0	3.3	0.2	1.5
	Ocp	1.0	1.4	2.1	1.3	13.9	1.4	1.0	20.0	34.9	52.0
2000-2100	Pro	0.8	56.0	7.9	0.1	4.0	8.3	17.4	3.7	0.1	1.6
	Ocp	1.0	1.4	1.9	1.0	12.1	1.3	1.0	18.5	28.0	32.3
2100-2200	Pro	1.0	49.2	12.0	0.1	4.9	9.9	17.4	2.8	0.2	2.5
	Ocp	1.0	1.4	2.4	4.0	11.5	1.3	1.1	21.7	27.7	21.3
2200-2300	Pro	0.9	53.7	15.2	0.1	5.3	6.0	13.7	2.6	0.2	2.3
	Ocp	1.1	1.4	2.0	1.0	10.7	1.3	1.0	12.9	22.3	19.4
16 hours	Pro	0.7	41.9	7.0	0.5	4.2	17.1	23.9	3.0	0.2	1.6
	Ocp	1.0	1.4	2.1	4.7	12.3	1.5	1.1	19.2	26.0	37.4

Legend

- Pro.** Proportion of vehicles in % (Sum may not add up to 100% due to figure rounding)
Ocp. Average occupancy of vehicles
M&H Medium and Heavy