

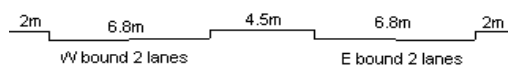
YEAR 2012

CORE STATION 5017

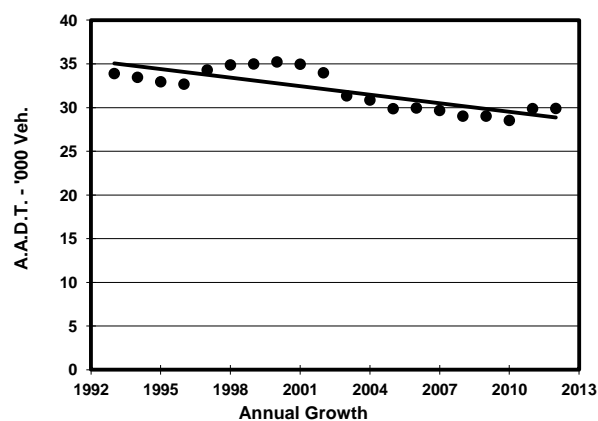
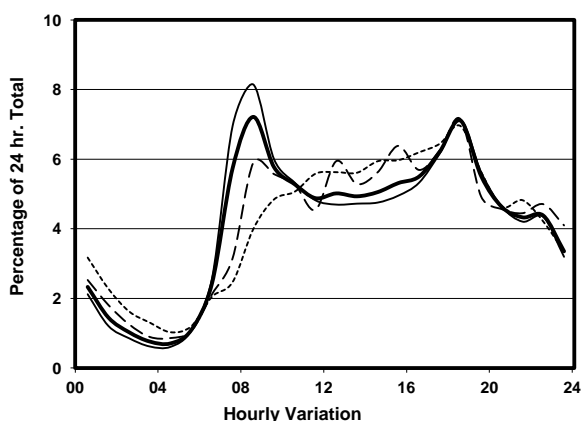
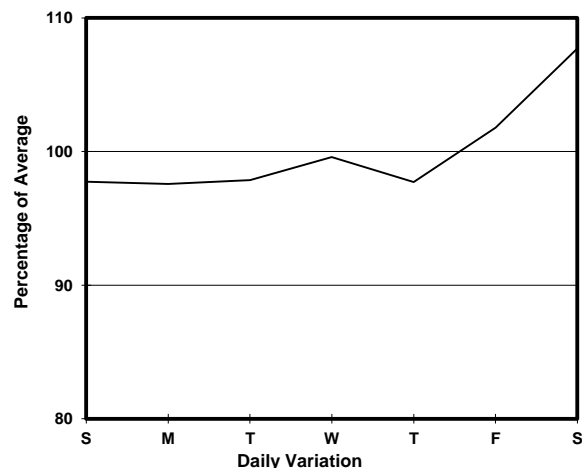
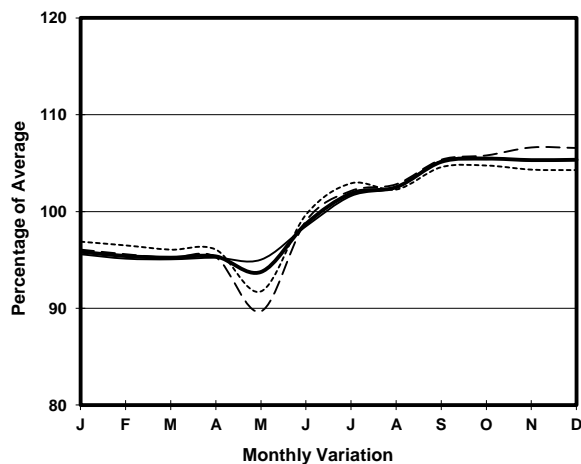
ROAD NETWORK MAJOR

ROAD TYPE RURAL ROAD

LINK CLEAR WATER BAY RD (from ANDERSON RD to HIRAM'S HIGHWAY)



1. TRAFFIC FLOW VARIATION AND GROWTH



2. TRAFFIC CHARACTERISTICS (BY DIRECTION)

Parameter	All - Day	Mon. - Fri.	Sat.	Sun.
EAST BOUND				
A.A.D.T.	14880	14640	16130	14900
R 12 / 24 - %	63	63	63.4	62.2
R 16 / 24 - %	85.6	86.6	84	82.9
AM Peak Hour	0800-0900	0800-0900	0800-0900	0900-1000
One-way flow at AM peak hour	830	890	780	680
T - % (AM)	-	7.6	-	-
PM Peak Hour	1800-1900	1800-1900	1800-1900	1800-1900
One-way flow at PM peak hour	1080	1110	1120	910
T - % (PM)	-	3.3	-	-
Prop.of commercial vehicles - 16 hr.	-	6.7	-	-
WEST BOUND				
A.A.D.T.	15020	14970	16200	14300
R 12 / 24 - %	73.1	74.8	70.1	67.3
R 16 / 24 - %	88.1	89	86.7	85.1
AM Peak Hour	0800-0900	0800-0900	0800-0900	0900-1000
One-way flow at AM peak hour	1330	1520	1130	740
T - % (AM)	-	6	-	-
PM Peak Hour	1800-1900	1800-1900	1800-1900	1800-1900
One-way flow at PM peak hour	1040	1000	1190	1120
T - % (PM)	-	3.6	-	-
Prop.of commercial vehicles - 16 hr.	-	5.6	-	-

3. OTHER INFORMATION AND COMMENT

4. Vehicle classification and occupancy - Monday to Friday

Time		Class of vehicle									
		Motor Cycle	Private Car	Taxi	Private LB	PLB	Goods veh.		Non Fr. Bus	Fr. Bus	
							Light	M & H		SD	DD
0700-0800	Pro	5.4	57.9	8.7	1.7	12.7	8.3	1.7	2.5	0.0	1.1
	Ocp	1.1	1.5	2.0	2.6	14.5	1.5	1.0	14.9	0.0	48.9
0800-0900 Peak hour	Pro	4.7	58.9	8.0	0.7	9.5	11.7	3.0	2.3	0.0	1.3
	Ocp	1.0	1.4	2.2	4.8	15.4	1.7	1.2	5.8	0.0	48.0
0900-1000	Pro	2.8	55.4	8.1	2.1	9.4	13.9	4.5	2.4	0.0	1.4
	Ocp	1.2	1.5	1.8	2.2	12.5	1.8	1.3	30.1	0.0	40.2
1000-1100	Pro	3.7	49.1	9.4	0.6	10.3	18.8	5.4	1.1	0.0	1.6
	Ocp	1.0	1.4	1.9	1.0	10.7	1.6	1.3	7.0	0.0	33.8
1100-1200	Pro	2.1	53.8	7.8	1.8	12.3	16.5	3.0	1.2	0.0	1.5
	Ocp	1.1	1.4	2.0	2.0	9.9	1.7	1.3	1.3	0.0	23.1
1200-1300	Pro	2.6	51.1	8.2	2.6	13.2	15.2	3.6	1.6	0.0	1.8
	Ocp	1.0	1.5	1.9	6.3	10.0	1.7	1.1	6.2	0.0	26.5
1300-1400	Pro	3.8	46.7	8.2	1.3	10.1	21.2	6.0	0.6	0.0	2.1
	Ocp	1.2	1.6	2.1	1.5	12.9	1.5	1.2	29.5	0.0	24.5
1400-1500	Pro	2.4	46.8	11.5	2.1	9.4	18.1	6.6	1.2	0.0	1.8
	Ocp	1.1	1.4	1.6	3.6	10.3	1.6	1.2	7.0	0.0	20.5
1500-1600	Pro	2.3	47.5	9.3	3.5	10.2	16.0	6.4	2.6	0.0	2.1
	Ocp	1.0	1.6	1.8	4.3	12.7	1.6	1.0	10.4	0.0	27.9
1600-1700	Pro	3.0	48.0	14.5	3.0	8.1	16.2	3.9	1.7	0.0	1.6
	Ocp	1.0	1.7	1.5	3.8	14.6	1.7	1.4	15.6	0.0	37.8
1700-1800	Pro	4.5	48.9	11.7	3.7	11.7	13.0	2.4	2.1	0.0	1.9
	Ocp	1.1	1.6	2.1	4.9	12.7	1.8	1.1	6.1	0.0	55.1
1800-1900	Pro	5.4	66.5	8.0	0.5	10.1	6.1	0.5	1.2	0.0	1.8
	Ocp	1.2	1.5	2.4	1.5	14.4	1.8	1.0	17.6	0.0	46.3
1900-2000	Pro	5.3	62.3	12.1	0.8	12.1	5.6	0.5	0.0	0.0	1.3
	Ocp	1.1	1.4	1.8	5.0	10.4	2.2	1.0	0.0	0.0	35.2
2000-2100	Pro	5.0	63.5	13.0	0.3	11.5	4.3	0.3	0.6	0.0	1.5
	Ocp	1.3	1.6	1.8	1.0	10.4	1.6	1.0	6.5	0.0	22.1
2100-2200	Pro	4.0	58.4	17.9	0.0	11.6	5.3	0.0	1.0	0.1	1.7
	Ocp	1.3	1.7	1.9	0.0	10.4	1.3	0.0	4.0	1.0	17.9
2200-2300	Pro	6.5	61.0	16.1	0.0	11.1	2.3	0.0	0.4	0.0	2.5
	Ocp	1.2	1.5	1.8	0.0	10.2	1.0	0.0	3.0	0.0	18.3
16 hours	Pro	4.0	55.0	10.5	1.5	10.7	12.0	3.0	1.5	0.1	1.7
	Ocp	1.1	1.5	1.9	3.7	12.2	1.7	1.2	12.2	1.0	33.8

Legend

- Pro.** Proportion of vehicles in % (Sum may not add up to 100% due to figure rounding)
- Ocp.** Average occupancy of vehicles
- M&H** Medium and Heavy