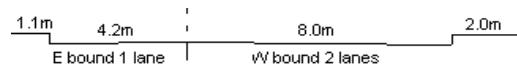
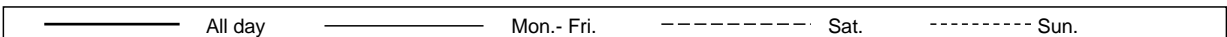
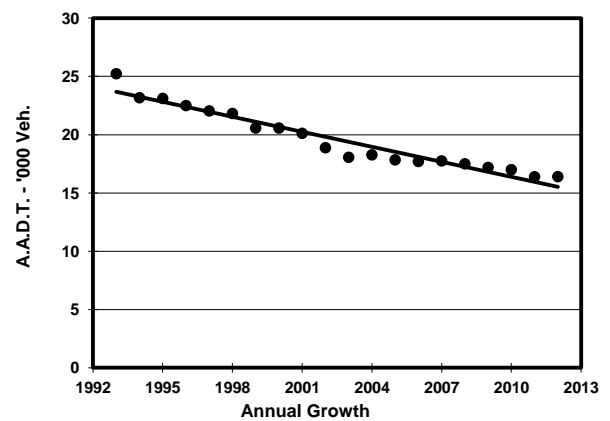
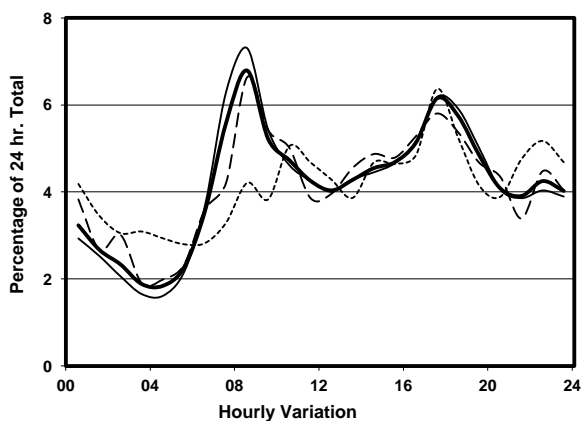
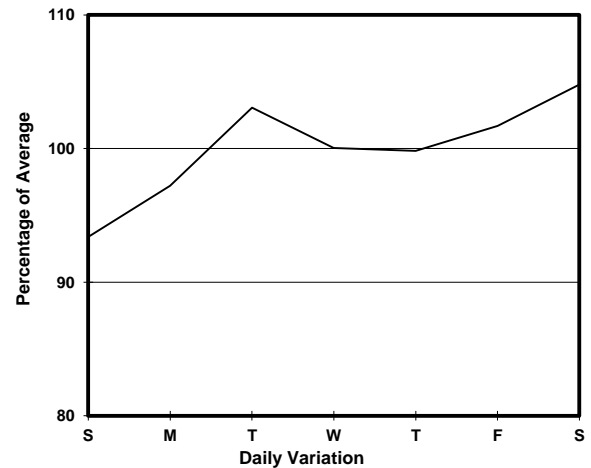
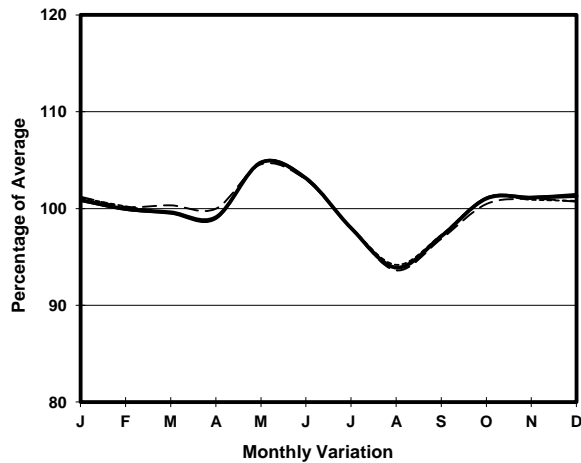


YEAR	2012	LINK	PO LAM RD (from ANDERSON RD to TSUI LAM RD)
CORE STATION	5023		
ROAD NETWORK	MAJOR		
ROAD TYPE	DISTRICT DISTRIBUTOR		



1. TRAFFIC FLOW VARIATION AND GROWTH



2. TRAFFIC CHARACTERISTICS (BY DIRECTION)

Parameter	All - Day	Mon. - Fri.	Sat.	Sun.
EAST BOUND				
A.A.D.T.	8080	8180	8470	7420
R 12 / 24 - %	60.6	61.9	59.5	54.8
R 16 / 24 - %	79.3	80.4	77.7	75
AM Peak Hour	0800-0900	0800-0900	0800-0900	0800-0900
One-way flow at AM peak hour	440	460	500	320
T - % (AM)	-	16.9	-	-
PM Peak Hour	1700-1800	1800-1900	1700-1800	1700-1800
One-way flow at PM peak hour	520	550	570	450
T - % (PM)	-	11.7	-	-
Prop.of commercial vehicles - 16 hr.	-	15.1	-	-
WEST BOUND				
A.A.D.T.	8320	8330	8780	7960
R 12 / 24 - %	61.6	63.2	60.1	55.2
R 16 / 24 - %	77.1	78.6	75.7	71.1
AM Peak Hour	0800-0900	0800-0900	0800-0900	0800-0900
One-way flow at AM peak hour	670	750	650	330
T - % (AM)	-	9.2	-	-
PM Peak Hour	1700-1800	1700-1800	1800-1900	1700-1800
One-way flow at PM peak hour	490	490	460	530
T - % (PM)	-	18.7	-	-
Prop.of commercial vehicles - 16 hr.	-	13.1	-	-

3. OTHER INFORMATION AND COMMENT

4. Vehicle classification and occupancy - Monday to Friday

Time		Class of vehicle									
		Motor	Private	Taxi	Private	PLB	Goods veh.		Non	Fr. Bus	
		Cycle	Car		LB		Light	M & H	Fr. Bus	SD	DD
0700-0800	Pro	7.1	21.8	26.6	2.4	5.6	22.6	3.6	2.4	0.0	8.0
	Ocp	1.1	1.6	1.9	5.8	12.8	1.3	1.0	15.5	0.0	29.1
0800-0900 Peak hour	Pro	5.7	30.1	25.0	2.0	6.8	18.7	3.1	4.5	0.0	4.1
	Ocp	1.2	1.4	1.6	3.9	12.2	1.3	1.1	6.6	0.0	39.4
0900-1000	Pro	3.6	30.9	25.6	2.2	5.4	18.4	6.3	1.8	0.0	5.8
	Ocp	1.0	1.3	1.7	1.6	10.6	1.4	1.0	11.0	0.0	21.8
1000-1100	Pro	3.9	22.4	30.8	1.7	7.8	20.7	5.6	1.1	0.0	6.0
	Ocp	1.0	1.4	1.6	1.7	8.9	1.5	1.2	6.5	0.0	15.6
1100-1200	Pro	2.9	16.7	21.1	2.2	11.6	25.5	8.7	2.2	0.0	9.1
	Ocp	1.0	1.5	1.6	4.0	5.1	1.2	1.3	14.7	0.0	16.7
1200-1300	Pro	3.9	21.0	21.0	2.0	11.2	19.0	7.2	6.6	0.0	8.0
	Ocp	1.2	1.3	1.6	3.7	4.7	1.4	1.2	2.0	0.0	22.7
1300-1400	Pro	2.8	23.4	26.2	2.8	12.1	15.6	5.7	2.8	0.0	8.5
	Ocp	1.3	1.3	1.5	2.8	7.2	1.5	1.1	1.0	0.0	18.9
1400-1500	Pro	0.8	20.5	25.1	1.5	8.4	27.4	3.8	2.3	0.0	10.3
	Ocp	2.0	1.6	1.8	1.0	6.5	1.6	1.0	4.7	0.0	13.6
1500-1600	Pro	4.1	24.9	19.1	2.9	9.9	23.2	6.4	1.2	0.0	8.4
	Ocp	1.0	1.5	2.0	6.0	9.9	1.5	1.2	13.0	0.0	15.0
1600-1700	Pro	4.0	16.5	22.3	2.9	8.0	24.0	5.7	8.0	0.0	8.7
	Ocp	1.3	1.7	1.7	3.4	9.4	1.5	1.0	8.0	0.0	31.5
1700-1800	Pro	4.2	21.7	27.5	2.1	9.0	20.1	5.3	3.2	0.0	7.0
	Ocp	1.0	1.4	1.6	3.0	11.8	1.8	1.3	4.8	0.0	35.9
1800-1900	Pro	9.1	33.1	22.2	0.5	9.5	15.0	2.7	2.3	0.0	5.8
	Ocp	1.2	1.6	2.0	7.0	14.2	1.5	1.5	2.8	0.0	51.3
1900-2000	Pro	7.2	35.2	28.0	1.0	8.2	12.0	1.0	0.5	0.0	7.0
	Ocp	1.2	1.6	1.7	3.0	11.3	1.3	1.5	1.0	0.0	34.9
2000-2100	Pro	7.4	32.1	36.4	0.0	6.2	9.3	1.9	0.0	0.0	6.8
	Ocp	1.0	1.6	1.5	0.0	11.6	1.8	1.0	0.0	0.0	28.3
2100-2200	Pro	2.1	28.4	41.9	0.0	5.7	10.7	2.1	0.7	0.0	8.3
	Ocp	1.3	1.7	1.8	0.0	9.3	1.7	1.0	1.0	0.0	24.8
2200-2300	Pro	5.2	39.9	38.8	0.6	4.1	1.7	1.7	0.6	0.0	7.4
	Ocp	1.2	1.8	1.9	1.0	10.6	1.3	1.0	1.0	0.0	23.8
16 hours	Pro	5.0	26.7	27.0	1.7	7.8	17.7	4.3	2.6	0.0	7.1
	Ocp	1.1	1.5	1.7	3.6	9.9	1.5	1.1	6.7	0.0	26.8

Legend

- Pro.** Proportion of vehicles in % (Sum may not add up to 100% due to figure rounding)
Ocp. Average occupancy of vehicles
M&H Medium and Heavy