

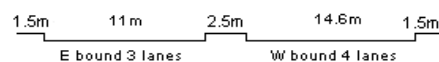
YEAR 2012

CORE STATION 5025

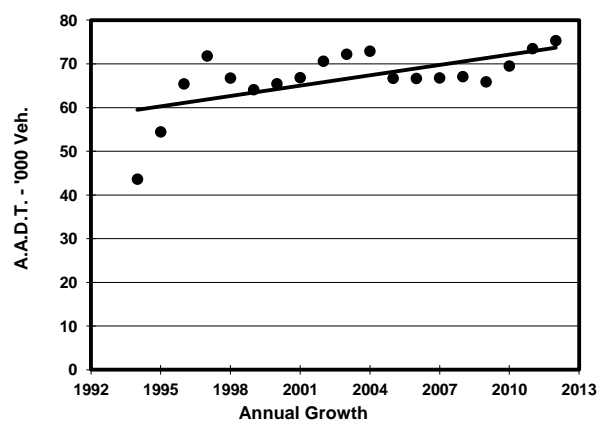
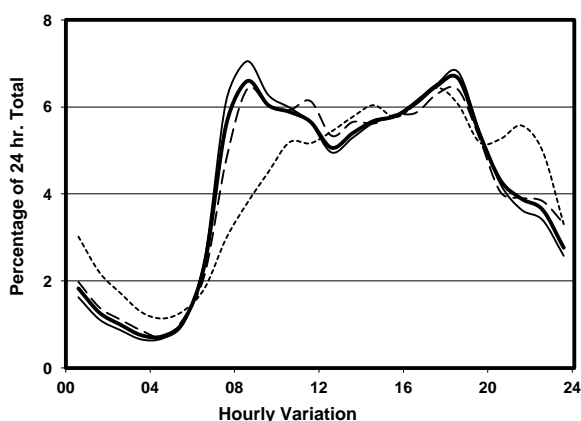
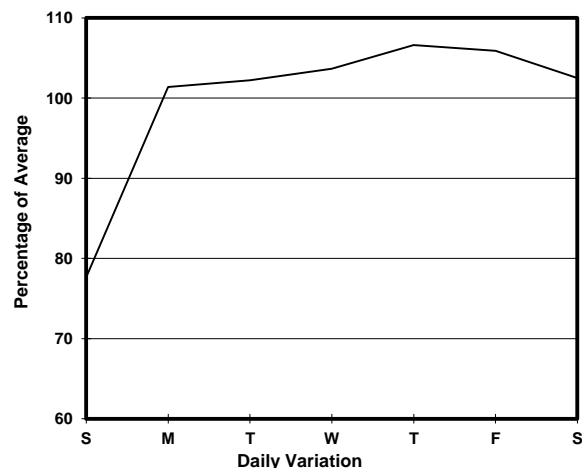
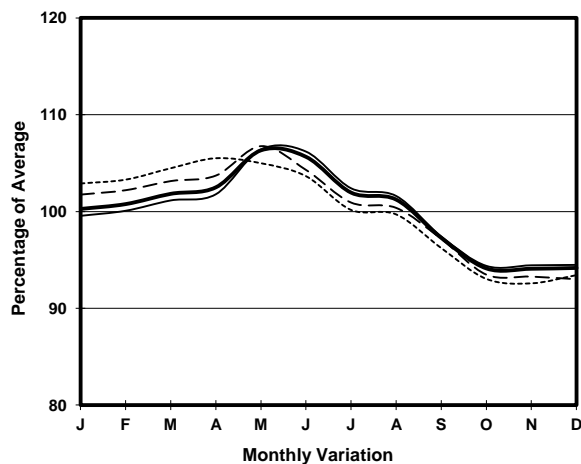
ROAD NETWORK MAJOR

ROAD TYPE EXPRESSWAY

LINK YUEN LONG HIGHWAY (from HUNG TIN RD INT to LAM TEI INT)



1. TRAFFIC FLOW VARIATION AND GROWTH



2. TRAFFIC CHARACTERISTICS (BY DIRECTION)

Parameter	All - Day	Mon. - Fri.	Sat.	Sun.
EAST BOUND				
A.A.D.T.	38770	40720	40650	30420
R 12 / 24 - %	70.1	71.4	69.4	62.3
R 16 / 24 - %	88.5	89.4	87.6	84
AM Peak Hour	0800-0900	0800-0900	0800-0900	0900-1000
One-way flow at AM peak hour	2440	2730	2540	1340
T - % (AM)	-	28.2	-	-
PM Peak Hour	1800-1900	1800-1900	1800-1900	1700-1800
One-way flow at PM peak hour	2610	2800	2710	1940
T - % (PM)	-	21	-	-
Prop.of commercial vehicles - 16 hr.	-	29	-	-
WEST BOUND				
A.A.D.T.	36550	38580	37260	28780
R 12 / 24 - %	71.7	73	71.2	64.1
R 16 / 24 - %	87.8	88.4	87.1	84.3
AM Peak Hour	0800-0900	0800-0900	0800-0900	0900-1000
One-way flow at AM peak hour	2530	2860	2450	1320
T - % (AM)	-	25.9	-	-
PM Peak Hour	1800-1900	1800-1900	1700-1800	1700-1800
One-way flow at PM peak hour	2410	2590	2510	1870
T - % (PM)	-	16.7	-	-
Prop.of commercial vehicles - 16 hr.	-	27.8	-	-

3. OTHER INFORMATION AND COMMENT

4. Vehicle classification and occupancy - Monday to Friday

Time		Class of vehicle									
		Motor Cycle	Private Car	Taxi	Private LB	PLB	Goods veh.		Non Fr. Bus	Fr. Bus	
							Light	M & H		SD	DD
0700-0800	Pro	1.9	34.9	9.0	0.2	3.5	21.7	22.8	5.2	0.1	0.8
	Ocp	1.1	1.3	2.3	3.5	13.3	1.5	1.1	8.7	15.8	17.7
0800-0900 Peak hour	Pro	1.4	38.9	10.3	0.4	2.9	19.2	23.1	3.2	0.1	0.5
	Ocp	1.0	1.4	2.3	4.4	14.7	1.5	1.1	21.5	26.7	26.0
0900-1000	Pro	1.2	34.7	5.4	0.7	1.8	21.5	30.7	3.1	0.1	0.8
	Ocp	1.1	1.4	2.1	2.9	14.4	1.4	1.5	12.7	27.9	20.2
1000-1100	Pro	0.5	25.1	6.0	0.8	1.8	26.3	35.8	2.9	0.1	0.6
	Ocp	1.0	1.4	2.2	3.0	11.7	1.4	1.1	24.6	22.7	25.5
1100-1200	Pro	1.0	28.8	7.3	0.8	2.7	22.2	32.4	4.1	0.2	0.6
	Ocp	1.0	1.6	2.4	1.8	10.6	1.4	1.2	16.4	21.9	30.5
1200-1300	Pro	1.3	26.3	8.1	0.7	2.4	26.7	30.8	3.0	0.2	0.6
	Ocp	1.0	1.5	2.2	3.0	10.6	1.3	1.2	11.0	29.7	24.7
1300-1400	Pro	1.5	27.9	6.2	0.5	2.3	26.3	31.9	2.5	0.2	0.7
	Ocp	1.1	1.6	2.0	3.0	11.0	1.5	1.1	18.9	23.8	26.4
1400-1500	Pro	1.6	29.7	6.9	1.0	1.5	28.0	28.5	2.2	0.2	0.6
	Ocp	1.0	1.4	2.3	4.5	12.5	1.4	1.2	17.4	32.6	24.6
1500-1600	Pro	0.8	32.0	6.9	1.1	1.3	24.7	28.3	4.3	0.1	0.6
	Ocp	1.2	1.6	2.3	1.4	14.4	1.4	1.2	13.4	40.5	33.3
1600-1700	Pro	1.7	31.1	6.4	0.3	1.4	25.5	28.9	3.6	0.2	0.9
	Ocp	1.1	1.5	1.9	4.0	12.2	1.4	1.1	15.6	25.9	22.1
1700-1800	Pro	2.4	35.8	8.2	1.4	1.9	25.6	20.2	3.6	0.2	0.8
	Ocp	1.0	1.6	2.3	2.7	16.3	1.6	1.2	16.6	31.1	26.6
1800-1900	Pro	1.8	46.9	6.7	0.7	3.5	21.6	14.0	4.0	0.1	0.6
	Ocp	1.1	1.5	2.0	2.1	16.9	1.3	1.1	11.9	34.5	42.7
1900-2000	Pro	1.3	54.9	8.7	0.4	2.5	15.5	12.3	3.4	0.2	0.7
	Ocp	1.1	1.4	2.2	2.5	14.4	1.3	1.1	8.3	22.4	31.0
2000-2100	Pro	1.6	56.5	10.4	0.1	3.0	11.9	8.8	6.4	0.2	1.2
	Ocp	1.0	1.5	1.9	1.0	15.8	1.4	1.2	13.2	17.8	15.0
2100-2200	Pro	2.6	55.2	10.9	0.5	2.8	12.1	8.5	6.2	0.2	1.0
	Ocp	1.0	1.4	1.7	1.8	13.5	1.3	1.1	8.4	10.7	12.7
2200-2300	Pro	1.8	59.9	11.4	0.2	3.1	11.7	7.9	2.4	0.2	1.4
	Ocp	1.2	1.5	2.1	3.0	14.3	1.5	1.2	22.2	8.2	7.7
16 hours	Pro	1.5	37.4	7.9	0.6	2.4	21.9	23.8	3.7	0.2	0.7
	Ocp	1.1	1.5	2.2	2.8	13.8	1.4	1.2	14.4	25.0	23.5

Legend

- Pro.** Proportion of vehicles in % (Sum may not add up to 100% due to figure rounding)
Ocp. Average occupancy of vehicles
M&H Medium and Heavy