

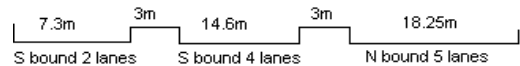
YEAR 2012

CORE STATION 5026

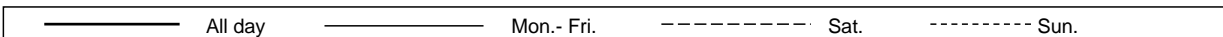
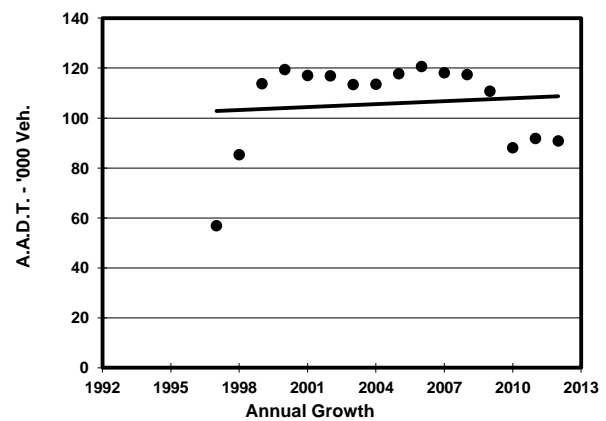
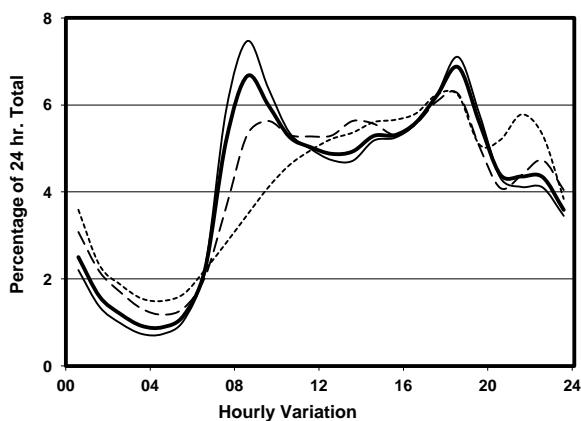
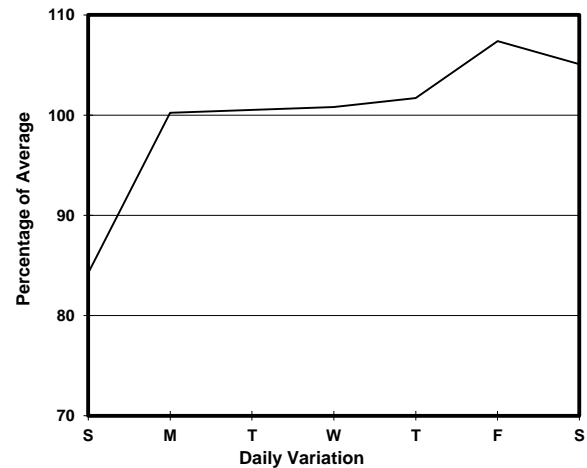
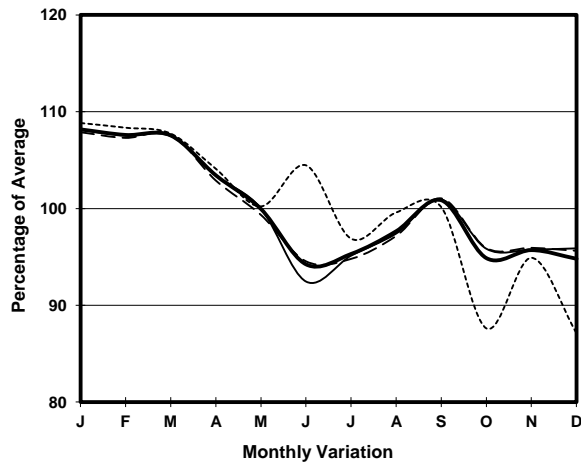
ROAD NETWORK MAJOR

ROAD TYPE EXPRESSWAY

LINK TSING KWAI HIGHWAY (from CHING LAI COURT SLIP  
RDS TO & FROM CHING CHEUNG RD to CHO YIU  
CHUEN SLIP RDS TO & FROM KWAI CHUNG RD &  
TSUEN WAN RD)



## 1. TRAFFIC FLOW VARIATION AND GROWTH



## 2. TRAFFIC CHARACTERISTICS (BY DIRECTION)

Parameter	All - Day	Mon. - Fri.	Sat.	Sun.
<b>SOUTH BOUND</b>				
A.A.D.T.	51150	53130	54260	41160
R 12 / 24 - %	71.5	73.3	69	63.5
R 16 / 24 - %	87	88.2	84.7	82.4
AM Peak Hour	0800-0900	0800-0900	0900-1000	0900-1000
One-way flow at AM peak hour	3890	4480	3640	1970
T - % (AM)	-	22.2	-	-
PM Peak Hour	1800-1900	1800-1900	1800-1900	1800-1900
One-way flow at PM peak hour	3380	3610	3210	2610
T - % (PM)	-	17.5	-	-
Prop.of commercial vehicles - 16 hr.	-	21.5	-	-
<b>NORTH BOUND</b>				
A.A.D.T.	39690	40470	41930	35910
R 12 / 24 - %	61.7	63.2	59.7	56.2
R 16 / 24 - %	84.5	85.9	81.2	80.4
AM Peak Hour	0800-0900	0800-0900	0900-1000	0900-1000
One-way flow at AM peak hour	2160	2520	1780	1190
T - % (AM)	-	23.5	-	-
PM Peak Hour	1800-1900	1800-1900	1800-1900	1700-1800
One-way flow at PM peak hour	2860	3040	2810	2270
T - % (PM)	-	13.8	-	-
Prop.of commercial vehicles - 16 hr.	-	20.9	-	-

## 3. OTHER INFORMATION AND COMMENT

**4. Vehicle classification and occupancy - Monday to Friday**

Time		Class of vehicle									
		Motor Cycle	Private Car	Taxi	Private LB	PLB	Goods veh.		Non Fr. Bus	Fr. Bus	
							Light	M & H		SD	DD
0700-0800	Pro	4.6	35.2	18.1	0.7	0.0	19.0	12.6	5.8	0.1	3.9
	Ocp	1.0	1.4	2.3	7.7	0.0	1.7	1.3	21.2	26.5	67.0
0800-0900 Peak hour	Pro	1.6	43.6	13.9	0.4	0.0	17.8	14.2	4.5	0.1	4.1
	Ocp	1.1	1.4	1.7	3.2	0.0	1.5	1.2	28.9	27.5	71.2
0900-1000	Pro	1.6	35.2	13.9	0.7	0.0	25.3	16.7	3.1	0.1	3.4
	Ocp	1.0	1.4	2.3	3.2	0.0	1.5	1.3	17.4	11.3	35.0
1000-1100	Pro	1.7	32.1	13.3	0.1	0.0	26.1	20.9	2.4	0.1	3.4
	Ocp	1.0	1.4	2.2	3.0	0.0	1.6	1.2	14.9	16.0	32.7
1100-1200	Pro	2.2	30.8	14.2	0.6	0.0	27.9	19.1	2.0	0.1	3.1
	Ocp	1.0	1.5	2.0	2.0	0.0	1.5	1.2	8.6	7.5	32.2
1200-1300	Pro	1.2	35.1	11.9	0.3	0.0	26.7	18.2	3.3	0.1	3.3
	Ocp	1.0	1.3	2.0	3.4	0.0	1.5	1.2	9.9	10.0	29.8
1300-1400	Pro	1.5	32.0	13.0	0.4	0.0	27.9	19.7	2.3	0.1	3.2
	Ocp	1.0	1.4	2.3	3.8	0.0	1.4	1.2	12.9	10.5	31.6
1400-1500	Pro	2.4	35.2	11.7	0.6	0.0	26.4	17.9	2.7	0.1	2.9
	Ocp	1.0	1.5	2.0	1.5	0.0	1.5	1.2	15.4	14.0	28.3
1500-1600	Pro	1.5	38.8	12.0	0.5	0.0	23.4	18.1	2.8	0.0	2.9
	Ocp	1.0	1.4	2.4	6.1	0.0	1.4	1.2	26.8	0.0	26.3
1600-1700	Pro	1.4	38.3	15.4	1.0	0.0	21.0	16.4	3.6	0.0	2.9
	Ocp	1.1	1.5	1.9	7.0	0.0	1.6	1.2	11.4	0.0	33.5
1700-1800	Pro	2.8	40.8	13.6	0.7	0.0	20.3	15.2	2.9	0.1	3.7
	Ocp	1.0	1.4	2.2	4.3	0.0	1.5	1.2	17.6	35.0	43.5
1800-1900	Pro	3.9	50.8	13.1	0.2	0.0	16.5	9.1	2.6	0.0	3.7
	Ocp	1.1	1.5	2.5	1.0	0.0	1.4	1.1	31.2	0.0	61.7
1900-2000	Pro	2.5	58.5	13.3	0.1	0.0	9.4	7.4	4.6	0.1	4.3
	Ocp	1.2	1.5	2.1	1.0	0.0	1.3	1.1	30.8	10.0	44.0
2000-2100	Pro	2.4	52.7	20.1	0.2	0.0	9.2	7.2	3.6	0.1	4.7
	Ocp	1.0	1.5	2.2	2.0	0.0	1.4	1.1	14.6	7.8	32.7
2100-2200	Pro	2.3	52.5	24.8	0.1	0.0	7.8	5.8	2.4	0.0	4.4
	Ocp	1.1	1.5	2.1	1.0	0.0	1.5	1.1	17.3	0.0	32.2
2200-2300	Pro	1.5	52.3	29.1	0.0	0.0	5.8	3.9	2.6	0.1	4.7
	Ocp	1.0	1.5	2.3	0.0	0.0	1.3	1.1	17.1	4.7	29.1
16 hours	Pro	2.2	41.0	15.1	0.4	0.0	20.0	14.3	3.2	0.1	3.6
	Ocp	1.1	1.4	2.2	4.2	0.0	1.5	1.2	19.9	14.2	41.5

**Legend**

- Pro.** Proportion of vehicles in % (Sum may not add up to 100% due to figure rounding)  
**Ocp.** Average occupancy of vehicles  
**M&H** Medium and Heavy