

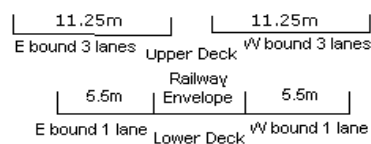
YEAR 2012

CORE STATION 5027

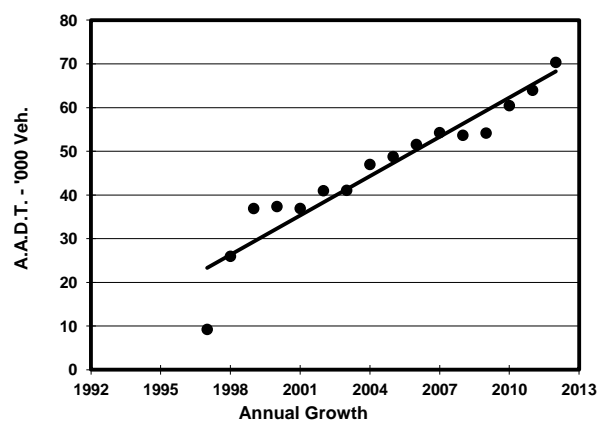
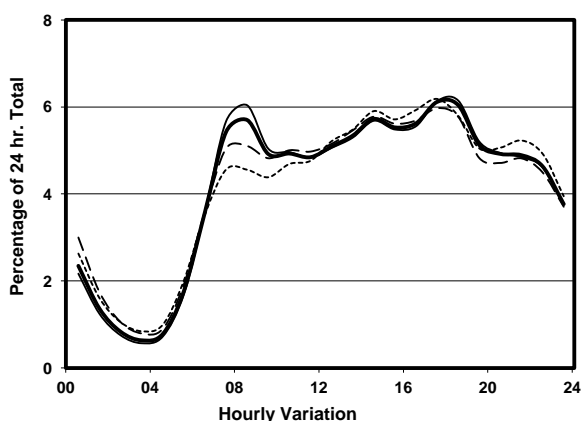
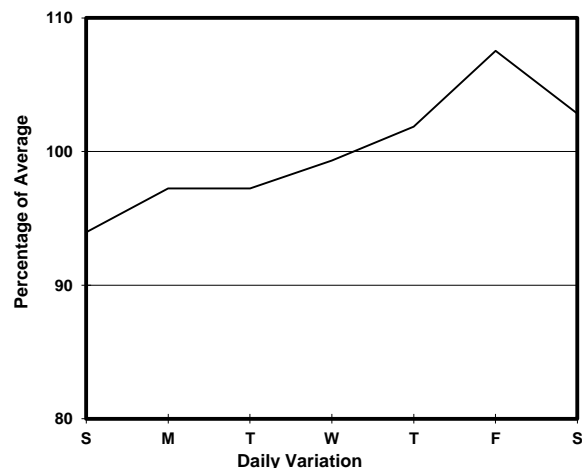
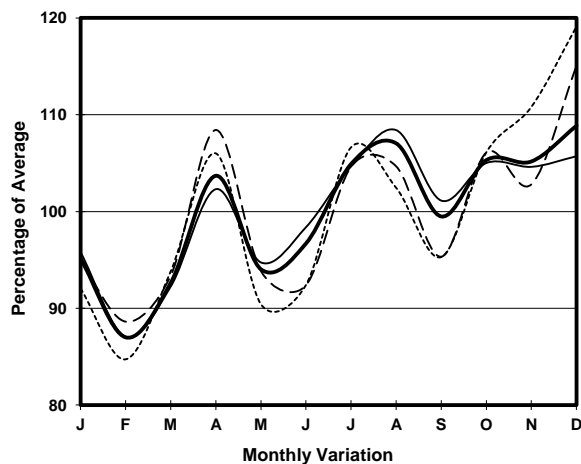
ROAD NETWORK MAJOR

ROAD TYPE EXPRESSWAY

LINK LANTAU LINK (from TSING MA BRIDGE EASTERN END
AT TSING YI to NGONG SHUEN AU)



1. TRAFFIC FLOW VARIATION AND GROWTH



2. TRAFFIC CHARACTERISTICS (BY DIRECTION)

Parameter	All - Day	Mon. - Fri.	Sat.	Sun.
EAST BOUND				
A.A.D.T.	34240	34420	35400	32850
R 12 / 24 - %	63.7	64.5	62.5	60.7
R 16 / 24 - %	83.8	84.4	81.9	82.3
AM Peak Hour	0800-0900	0800-0900	0800-0900	0800-0900
One-way flow at AM peak hour	1650	1710	1630	1360
T - % (AM)	-	17.7	-	-
PM Peak Hour	1800-1900	1800-1900	1800-1900	1800-1900
One-way flow at PM peak hour	2400	2490	2250	2140
T - % (PM)	-	19.5	-	-
Prop.of commercial vehicles - 16 hr.	-	20.5	-	-
WEST BOUND				
A.A.D.T.	36100	36550	36680	33960
R 12 / 24 - %	66.9	67.3	66.3	65.5
R 16 / 24 - %	86	86.5	84.6	84.5
AM Peak Hour	0800-0900	0800-0900	0700-0800	0700-0800
One-way flow at AM peak hour	2370	2570	2210	1810
T - % (AM)	-	19.3	-	-
PM Peak Hour	1700-1800	1700-1800	1700-1800	1700-1800
One-way flow at PM peak hour	1980	1970	2080	2000
T - % (PM)	-	22.2	-	-
Prop.of commercial vehicles - 16 hr.	-	21	-	-

3. OTHER INFORMATION AND COMMENT

4. Vehicle classification and occupancy - Monday to Friday

Time		Class of vehicle									
		Motor Cycle	Private Car	Taxi	Private LB	PLB	Goods veh.		Non Fr. Bus	Fr. Bus	
							Light	M & H		SD	DD
0700-0800	Pro	1.0	34.1	39.3	0.6	0.0	8.5	6.0	5.9	0.1	4.5
	Ocp	1.1	1.6	1.9	7.0	0.0	1.7	1.3	30.6	20.0	52.9
0800-0900	Pro	1.3	41.6	25.8	0.6	0.0	12.2	9.7	4.4	0.1	4.2
	Ocp	1.0	1.6	2.3	1.7	0.0	1.7	1.4	18.3	26.8	59.3
0900-1000	Pro	0.8	36.1	24.8	0.6	0.0	18.1	11.2	3.3	0.2	4.9
	Ocp	1.0	1.7	2.1	2.4	0.0	1.5	1.4	5.2	12.3	30.7
1000-1100	Pro	0.3	33.3	25.5	1.0	0.0	18.1	13.3	3.4	0.3	4.9
	Ocp	1.0	1.5	2.0	2.9	0.0	1.5	1.4	8.1	9.9	25.6
1100-1200	Pro	0.5	33.0	24.9	0.4	0.0	19.0	12.5	4.8	0.3	4.6
	Ocp	1.0	1.9	2.3	1.3	0.0	1.5	1.3	9.7	9.9	24.9
1200-1300	Pro	0.4	31.4	29.8	0.4	0.0	15.7	12.9	4.9	0.2	4.4
	Ocp	1.0	1.8	2.4	3.7	0.0	1.5	1.4	8.0	10.4	22.2
1300-1400	Pro	0.6	32.0	27.0	0.3	0.0	19.1	11.2	4.6	0.2	5.0
	Ocp	1.0	1.8	2.2	3.0	0.0	1.4	1.4	10.0	5.2	30.7
1400-1500	Pro	0.5	35.5	22.1	0.9	0.0	20.2	12.5	4.0	0.1	4.1
	Ocp	1.0	2.0	2.4	1.9	0.0	1.5	1.3	9.4	10.2	31.2
1500-1600	Pro	0.2	36.5	22.8	0.5	0.0	16.9	14.1	4.4	0.3	4.3
	Ocp	1.0	1.9	2.5	3.8	0.0	1.5	1.3	10.6	6.3	26.0
1600-1700	Pro	0.2	32.1	22.5	1.6	0.0	18.5	14.7	5.8	0.2	4.5
	Ocp	1.0	1.8	2.1	2.6	0.0	1.6	1.3	9.4	14.2	36.0
1700-1800	Pro	1.0	37.8	21.8	0.8	0.0	15.1	13.6	5.3	0.2	4.4
	Ocp	1.0	1.9	2.2	2.7	0.0	1.5	1.3	16.1	11.3	46.4
1800-1900 Peak hour	Pro	1.8	42.9	21.3	0.5	0.0	12.5	11.2	5.0	0.2	4.6
	Ocp	1.0	1.7	2.5	2.2	0.0	1.3	1.1	18.0	17.1	58.7
1900-2000	Pro	0.6	48.5	23.8	0.0	0.0	10.4	8.8	3.1	0.3	4.6
	Ocp	1.2	1.6	2.2	0.0	0.0	1.3	1.2	14.6	10.4	40.9
2000-2100	Pro	0.1	41.1	29.2	0.1	0.0	8.6	8.7	7.2	0.2	4.8
	Ocp	1.0	1.7	2.3	2.0	0.0	1.3	1.2	16.6	13.4	35.5
2100-2200	Pro	0.3	40.3	30.0	0.3	0.0	8.3	12.9	3.1	0.3	4.5
	Ocp	1.0	1.9	2.1	3.5	0.0	1.3	1.1	7.2	10.4	35.2
2200-2300	Pro	1.1	45.8	26.4	0.3	0.0	6.9	10.9	2.6	0.2	5.8
	Ocp	1.0	1.8	2.0	1.5	0.0	1.2	1.1	11.6	8.2	29.2
16 hours	Pro	0.7	37.6	26.0	0.6	0.0	14.3	11.4	4.5	0.2	4.6
	Ocp	1.0	1.8	2.2	2.9	0.0	1.5	1.3	13.8	11.9	37.2

Legend

- Pro.** Proportion of vehicles in % (Sum may not add up to 100% due to figure rounding)
- Ocp.** Average occupancy of vehicles
- M&H** Medium and Heavy